

STATE NEWS

An experimental station for Coos county, to aid fruit growers in the region west of the Coast range of mountains, is a project that has been set on foot.

State Engineer Lewis characterizes the Des Chutes river as the most wonderful stream in the world, after a trip through its entire drainage basin.

Livestock men of the whole country have been in session in Portland during the past week and while there learned many things about Oregon's growing livestock industry.

So successful was the recent excursion of the Portland Commercial club to Tillamook county that another special train load of Portland people will make the same trip June 25, 26 and 27.

The Elks are making great preparations for the reunion to be held in Portland July 8-13. An elaborate decoration scheme is being worked out.

Independence Day will be celebrated very widely in Oregon this year. Perhaps the generally fine crop outlook throughout the state has had the effect of making the people unusually keen to enjoy a notable holiday.

While the fire wardens were out on their survey near Florence last week, fire destroyed their camp, at a loss of \$500. They were compelled to walk 16 miles to obtain shelter for the night.

In the Circuit Court of the State of Oregon for Polk County.—Department No. 2. Lyman A. Warner, Plaintiff, vs. Benjamin Metzker, deceased, the unknown heirs of Benjamin Metzker, deceased, William Howe, deceased, and the unknown heirs of William Howe, deceased.

To Benjamin Metzker, the unknown heirs of Benjamin Metzker, William Howe, and the unknown heirs of William Howe. Also all other persons or parties unknown claiming any right, title, estate, lien or interest in the real estate described in the complaint herein, Defendants.

In the name of the State of Oregon You are required to appear and answer the complaint filed against you in the above entitled suit within six weeks from the date of the first publication of this summons, which said date is the 24th day of May, 1912, and if you fail to answer for want thereof the plaintiff will apply to the court for a judgment and decree against you as prayed for in the complaint, to-wit: (1) That plaintiff is the owner in fee simple of the following described premises, to-wit:

Beginning at the Northeast Corner of the H. F. Reed D. L. C. in Tp. 6 S. R. 5 W. of the W. M. in Polk County, Oregon, and running thence West 4.98 chains; thence North 12.25 chains; thence East 28.88 chains; thence South 16.59 chains; thence West 23.30 chains; thence North 4.34 chains to the place of beginning and containing 44.54 acres, more or less.

That all adverse claims of the defendants may be determined by a decree of said court. (2) That by said decree it be decreed and adjudged that the said defendants and each of them have no estate or interest whatever in or to said parcel of land and that the title of plaintiff thereto is good and valid; and (3) That the said defendants and each of them be forever enjoined and debarred from asserting any claims whatever in or to said land adverse to plaintiff, and that plaintiff may have such other relief as may seem meet with equity.

This summons, by an order of the Hon. Ed F. Coad, County Judge of Polk County, Oregon, on the 21st day of May, 1912, is served upon you by publication thereof for a period of six consecutive weeks immediately prior to the 5th day of July, 1912, in the Polk County Observer, a newspaper of general circulation printed at Dallas, in said County.

W. O. SIMS, Attorney for Plaintiff.

Battleship Texas Greatest of Super-Dreadnoughts

THE battleship Texas, greatest of the super-Dreadnoughts yet constructed for the United States navy, was successfully launched. As the big hull, gay with bunting, started down the ways little Miss Claudia Lyon, the ten-year-old daughter of Colonel Cecil A. Lyon, Republican national committeeman for Texas, crashed a bottle of champagne against the bow.

The Texas with all her stores aboard will displace 28,367 tons, or 1,000 tons more than the great Dreadnought Arkansas, now about ready for commission. She is 573 feet long, ninety-five feet two and a half inches beam, so that she will have almost fifteen feet to spare in passing through the Panama canal locks. Her draft will be twenty-eight feet six inches and her speed twenty-one knots, which would have been high speed for a cruiser a few years ago.

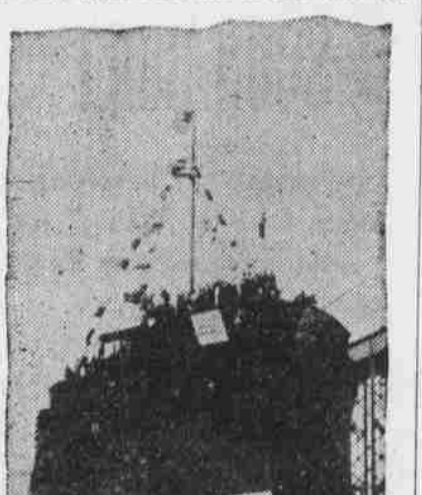


Photo by American Press Association.

It is a remarkable fact that the 27,000 horsepower required to maintain this speed will be developed in the case of the Texas by twin screw vertical, triple expansion engines of the old type, instead of by turbines, which have been almost universally adopted abroad in all naval construction.

The Texas presents some features of interest entirely apart from her great size. In the first place, her launching came just about thirteen months from the date her keel was laid—a remarkable performance for American shipwrights and a practical demonstration

of their ability to turn out warships as rapidly as any nation in the world under proper incentive.

In the second place, the Texas will be the first ship in the world to carry fourteen inch guns. She will have ten of them distributed in five turrets arranged on a central line from stem to stern. In addition to these monster guns the new American ship will carry no less than sixteen five-inch rifles in place of the little three and four inch guns that were formerly regarded as sufficient for the secondary battery.

The increasing size and power of the torpedo boat destroyers and the enormous speed of the chain lightning cruiser have brought about this doubling of the power of the secondary battery, which must be relied upon for very quick work in meeting these attacks.

The Texas will be clothed with armor in plenty, not only over her vitals, but even the ordinarily exposed ends of the ship, but the details of its thickness and general disposition are withheld from publication.

The Texas will not be ready to go into commission until Dec. 17 next year. As she emerges from the builder's hands her total cost will be about \$10,000,000.

Photo by American Press Association.

MISS CLAUDIA LYON.

Photo by American Press Association.

Photo by American Press Association.

Photo by American Press Association.

Photo by American Press Association.

Granulated Eye Lids Can be cured without cauterizing or scarifying by the use of Sutherland's Eagle Eye Salve. We guarantee it to cure. 25c a box everywhere. Sold by Conrad Stafrin.

In order to guard against future conflagrations, Seaside has purchased a new hose cart and will soon buy an engine.

Do You Get the Best If you have a cough, cold, asthma, croup or any throat or bronchial trouble and use Dr. Bell's Pine-Tar-Honey, you do. Look for the Bell on the Bottle. Sold by Conrad Stafrin.

Klickitat has a new sawmill with a sawing capacity of 50,000 feet a day.

We Don't Have to Tell you what it's for, its name tells. Dr. Bell's Pine-Tar-Honey is the best cough medicine and several million people already know it. Look for the Bell on the Bottle. Sold by Conrad Stafrin.

A Denver man urges the farmers to employ electric power on their farms, holding that it is cheaper than to use horses.

The Best Remedy For all kinds of sore eyes is Sutherland's Eagle Eye Salve. It is a creamy snow white ointment and would not injure the eyes of a babe. Guaranteed. 25c. Sold by Conrad Stafrin.

The O.-W. R. & N. sent a special engine to Hood River for the purpose of handling a large number of express and refrigerator cars in use during the strawberry season.

Don't Experiment With a Cough When Dr. Bell's Pine-Tar-Honey has been used by millions of people for sixteen years with a steady increasing demand. Look for the Bell on the Bottle. Sold by Conrad Stafrin.

Nevada is the latest state to come into the archaeological limelight. The remains of camels, a three-toed horse, and of a dog 5,000,000 years old have been found within its borders recently.

VARICOSE VEINS are oftentimes dangerous and should not be neglected. Our SILK ELASTIC HOSIERY if constantly worn—will relieve at once—often cure. Free measurement blank on request. WOODARD, CLARKE & CO. PORTLAND, OREGON

OFFICIAL STATE OFFICERS. United States Senators—Jonathan Bourne, Jr. George E. Chamberlain Congressmen—First District... Willis C. Hawley Second District... A. W. Lafferty Governor... Oswald West Secretary of State... Ben W. Oleott State Treasurer... Thomas B. Kay

DALLAS STATION TIME CARD

Table with columns for SOUTHERN PACIFIC, LEAVING DALLAS, and ARRIVING DALLAS. Lists train numbers and times for various destinations.

SALEM, FALLS CITY & WESTERN RY. CO.

Table with columns for East Bound and West Bound trains. Lists train numbers and times for destinations like West Salem, Falls City, and Black Rock.

INDEPENDENCE & MONMOUTH RY.

Table with columns for Dallas Division, LEAVING DALLAS, and ARRIVING DALLAS. Lists train numbers and times.

Table with columns for Airline Division, LEAVING AIRLINE, and ARRIVING AIRLINE. Lists train numbers and times.

Superintendent of Public Instruction... L. R. Alderman State Printer... Willis S. Duniway Attorney General... A. M. Crawford Supreme Court—Chief Justice, Robert Eakin; Associate Justices, Thomas A. McBride, George H. Burnett, Frank A. Moore, Henry J. Bean.

COUNTY OFFICERS.

State Senator... C. L. Hawley Representatives—Ira C. Powell F. W. Chambers County Judge... Ed. F. Coad County Commissioners—William Riddell S. H. Petre County Clerk... E. M. Smith Sheriff... J. M. Grant Treasurer... Tracy Staats Assessor... C. S. Graves School Superintendent... H. C. Seymour Surveyor... R. F. Beezley Coroner... R. L. Chapman

CITY OFFICERS.

Mayor... J. R. Craven Councilman-at-Large... W. A. Ayres Councilmen—Ward No. 1—H. L. Fenton, H. G. Campbell. Ward No. 2—Tracy Staats, J. G. McBea. Ward No. 3—F. J. Coad, A. J. Barham. Auditor and Police Judge—Charles Gregory City Attorney... W. L. Tooze, Jr. City Treasurer... W. G. Vassall City Engineer... J. J. Sammons Street Commis'er... P. S. Greenwood Night Policeman... D. J. Grant

LODGE DIRECTORY

REBEKAHS—Almira Lodge No. 26 meets first and third Wednesday of each month at Odd Fellows' Hall. NOLA COAD, Noble Grand. ORA COSPER, Secretary.

WOODMEN OF THE WORLD—Dallas Camp No. 209 meets in W. O. W. Hall on Tuesday evening of each week. TRACY STAATS, Consul Com. W. G. VASSAL, Clerk.

WOMEN OF WOODCRAFT—Mistletoe Circle, No. 33, Women of Woodcraft, meets in Woodman Hall second and fourth Wednesday nights in each month. MARY STARR, Guardian Neighbor. SADIE LYNN, Clerk.

A. F. & A. M.—Jennings Lodge, No. 9, meets second and fourth Fridays of each month, in Masonic hall on Main street. Visiting brethren welcome. W. L. SOEHREN, W. M. WALTER S. MUIR, Secretary.

UNITED ARTISANS—Dallas Assembly, No. 46, meets on first and third Mondays of each month at Woodman hall. Visiting members made welcome. F. G. WING, M. A. WILLIS SIMONTON, Secretary.

Holman Dairy For Sale

This business was established ten years ago and has been operating in Dallas ever since. It consists of a choice selection of 20 cows, Jersey Bull, delivery wagons, horses, harness, milk bottles, cans, etc. The price is right and if you are looking for a sure money making proposition see me at once.

F. E. COOK Dallas, Ore

Are You Going to Build?

Let Us Quote You Prices on all Your Lumber Bill

Will be pleased to send our salesman to call on you upon request by mail or phone

Dallas Lumber and Logging Co.

Dallas, Oregon

Observer Want Ads Pay

Now For The Seashore! VIA THE SUNDAY EXCURSION TRAIN ON THE C. & E. R. R. Leaves Albany at 7:30 a. m., Corvallis 8:00 a. m. and connects with S. P. trains 16, 14 and 28 from points south.

Table with columns for FROM, TO, FARE, and TO. Lists fares from principal stations to Newport or Tillamook.

Tickets to above points on sale daily good all season, with corresponding low fares from other points. Week end tickets are also on sale from various points.

Attend the B. P. O. E. Elks Convention, Portland, July 8-13. Low Fares to all points East June to September.

Observer Ads Bring Results