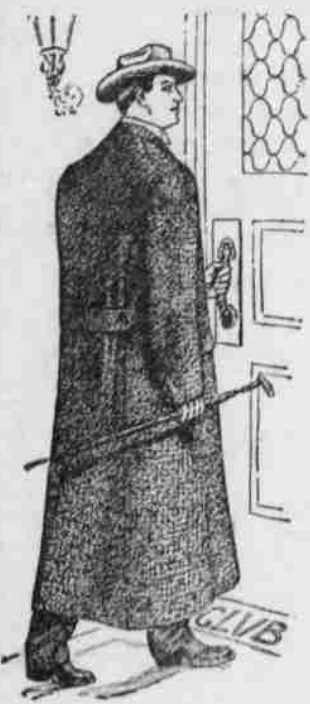


OUR SALE IS A HUMMER

We sold more suits last Saturday than were ever sold by one firm in one day in Dallas before. The store was crowded with eager clothing buyers every minute of the day, and not a single customer went away disappointed or dissatisfied. Every one carried home an armful of bargains. Many of them came back for more bargains yesterday, and they will come again and again while this sale lasts until all of their clothing needs are satisfied. They are finding that we are doing just what we advertised--selling a stock of the very highest grade clothing at prices never before heard of in Polk County.

Here are Bargains that May Never be Offered to You Again



Any Overcoat in the Store \$13.75

"Priestly" Cravenettes that sell the world over for \$30 are going at \$13.75. They won't last long at this figure, so be in time if you want one.

Any Hat in the Store at \$2.50

\$3 Wolgus, \$4 Mallory Rainproofs and \$5 and \$6 Stetsons are all going at \$2.50 each during this great sale. Scores of people bought hats yesterday and Saturday, and many customers bought two, just as we told them in our advertisements that they would.

Any Suit in the Store at \$13.75

Values range as high as \$30, but they all go at \$13.75. All new goods and the very cream of the clothing market. Not a single suit reserved. Every one is on display and ready for your selection.

REMEMBER That This Great Sale Will Last Only a Few Days More



If you want some of these bargains, you will have to come now. If you don't get them, it will be no fault of our's. The sale will positively close when the big clock in the Courthouse tower strikes 6 on the evening of March 17--the 17th of Ireland." After that date, \$6 Stetson Hats will not be sold for \$2.50, and \$30 Suits will go back to \$30.

IF YOU DELAY YOUR PURCHASES, IT WILL BE YOUR LOSS, NOT OURS.

UGLOW CLOTHING HOUSE

DALLAS,
OREGON

CURE YOUR KIDNEYS

Why will people continue to suffer the agonies of kidney complaint, backache, urinary disorders, lameness, headaches, languor. Why allow themselves to become chronic invalids, when a certain cure is offered them?



Most people know that if they have been sick they need *Scott's Emulsion* to bring back health and strength.

But the strongest point about *Scott's Emulsion* is that you don't have to be sick to get results from it.

It keeps up the athlete's strength, puts fat on thin people, makes a fretful baby happy, brings color to a pale girl's cheeks, and prevents coughs, colds and consumption.

Food in concentrated form for sick and well, young and old, rich and poor.

And it contains no drugs and no alcohol.

ALL DRUGGISTS; 50c. AND \$1.00.

Doan's Kidney Pills is the remedy to use, because it gives to the kidneys the help they need to perform their work. If you have any, even one, of the symptoms of kidney diseases, cure yourself now, before diabetes, dropsy or Bright's disease sets in.

Men, L. Hodson, of 717 Aura St., Pendleton, Ore., says: "I just as enthusiastically endorse Doan's Kidney Pills today as I did nearly three years ago. They relieved me of kidney trouble which had bothered me for a considerable time. There was aching pains across the small of my back and down through my kidneys, which were aggravated by colds which settled in the back and loins and caused an awful lameness. This was my condition when I began taking Doan's Kidney Pills. This remedy banished the backache and pains through the loins, regulated the kidney secretions and removed every symptom of the trouble. From that day to this there has been no recurrence, and I give Doan's Kidney Pills all the credit. I consider them to be the best kidney remedy procurable and recommend them whenever the occasion arises."

COFFEE
Five degrees of excellence: * good; ** better; *** fine; **** finer; ***** finest: all Schilling's Best.

TEA
We couldn't moneyback tea, if our tea weren't better than tea as you know it.

INDEPENDENCE & MONMOUTH Railway.
FROM INDEPENDENCE FOR DALLAS.
Train No. 64. Leave Independence daily, 6:00 a. m.; 10:00 a. m.; 1:00 p. m.; 4:00 p. m.; 6:00 p. m.
Train No. 65. Leave Independence, daily, 10:30 a. m.; 1 p. m.; 4:30 p. m.; 7:30 p. m.
Train No. 66. Leave Independence, daily, 6:15 p. m.; 10:15 p. m.
FOR AIRLIE.
Train No. 67. Leave Independence, daily, 7:00 a. m.; 11:00 a. m.; 4:00 p. m.; 7:00 p. m.
Train No. 68. Leave Independence, daily, 7:30 p. m.; 11:30 p. m.
FOR MONMOUTH ONLY.
Leave Independence, daily, 7:30 p. m. No. 101 arrives Monmouth 7:30 p. m.
FROM DALLAS.
Train No. 69. Leave Dallas, daily, 6:00 a. m.; 10:00 a. m.; 1:00 p. m.; 4:00 p. m.; 6:00 p. m.
Train No. 70. Leave Dallas, Sunday only, 6:50 a. m.; 10:50 a. m.; 1:00 p. m.; 4:00 p. m.; 6:00 p. m.
Train No. 71. Leave Dallas, daily, 1 p. m.; 4:00 p. m.; 7:00 p. m.; 10:00 p. m.
Train No. 72. Leave Dallas, daily, 7:30 p. m.; 11:30 p. m.
Train No. 73. Leave Dallas, daily, 7:30 p. m.; 11:30 p. m.
Train No. 74. Leave Dallas, daily, 7:30 p. m.; 11:30 p. m.
Train No. 75. Leave Dallas, daily, 7:30 p. m.; 11:30 p. m.
Train No. 76. Leave Dallas, daily, 7:30 p. m.; 11:30 p. m.
Train No. 77. Leave Dallas, daily, 7:30 p. m.; 11:30 p. m.
Train No. 78. Leave Dallas, daily, 7:30 p. m.; 11:30 p. m.
Train No. 79. Leave Dallas, daily, 7:30 p. m.; 11:30 p. m.
Train No. 80. Leave Dallas, daily, 7:30 p. m.; 11:30 p. m.
Train No. 81. Leave Dallas, daily, 7:30 p. m.; 11:30 p. m.
Train No. 82. Leave Dallas, daily, 7:30 p. m.; 11:30 p. m.
Train No. 83. Leave Dallas, daily, 7:30 p. m.; 11:30 p. m.
Train No. 84. Leave Dallas, daily, 7:30 p. m.; 11:30 p. m.
Train No. 85. Leave Dallas, daily, 7:30 p. m.; 11:30 p. m.
Train No. 86. Leave Dallas, daily, 7:30 p. m.; 11:30 p. m.
Train No. 87. Leave Dallas, daily, 7:30 p. m.; 11:30 p. m.
Train No. 88. Leave Dallas, daily, 7:30 p. m.; 11:30 p. m.
Train No. 89. Leave Dallas, daily, 7:30 p. m.; 11:30 p. m.
Train No. 90. Leave Dallas, daily, 7:30 p. m.; 11:30 p. m.
Train No. 91. Leave Dallas, daily, 7:30 p. m.; 11:30 p. m.
Train No. 92. Leave Dallas, daily, 7:30 p. m.; 11:30 p. m.
Train No. 93. Leave Dallas, daily, 7:30 p. m.; 11:30 p. m.
Train No. 94. Leave Dallas, daily, 7:30 p. m.; 11:30 p. m.
Train No. 95. Leave Dallas, daily, 7:30 p. m.; 11:30 p. m.
Train No. 96. Leave Dallas, daily, 7:30 p. m.; 11:30 p. m.
Train No. 97. Leave Dallas, daily, 7:30 p. m.; 11:30 p. m.
Train No. 98. Leave Dallas, daily, 7:30 p. m.; 11:30 p. m.
Train No. 99. Leave Dallas, daily, 7:30 p. m.; 11:30 p. m.
Train No. 100. Leave Dallas, daily, 7:30 p. m.; 11:30 p. m.
Train No. 101. Leave Dallas, daily, 7:30 p. m.; 11:30 p. m.
Train No. 102. Leave Dallas, daily, 7:30 p. m.; 11:30 p. m.
Train No. 103. Leave Dallas, daily, 7:30 p. m.; 11:30 p. m.
Train No. 104. Leave Dallas, daily, 7:30 p. m.; 11:30 p. m.
Train No. 105. Leave Dallas, daily, 7:30 p. m.; 11:30 p. m.
Train No. 106. Leave Dallas, daily, 7:30 p. m.; 11:30 p. m.
Train No. 107. Leave Dallas, daily, 7:30 p. m.; 11:30 p. m.
Train No. 108. Leave Dallas, daily, 7:30 p. m.; 11:30 p. m.
Train No. 109. Leave Dallas, daily, 7:30 p. m.; 11:30 p. m.
Train No. 110. Leave Dallas, daily, 7:30 p. m.; 11:30 p. m.
Train No. 111. Leave Dallas, daily, 7:30 p. m.; 11:30 p. m.
Train No. 112. Leave Dallas, daily, 7:30 p. m.; 11:30 p. m.
Train No. 113. Leave Dallas, daily, 7:30 p. m.; 11:30 p. m.
Train No. 114. Leave Dallas, daily, 7:30 p. m.; 11:30 p. m.
Train No. 115. Leave Dallas, daily, 7:30 p. m.; 11:30 p. m.
Train No. 116. Leave Dallas, daily, 7:30 p. m.; 11:30 p. m.
Train No. 117. Leave Dallas, daily, 7:30 p. m.; 11:30 p. m.
Train No. 118. Leave Dallas, daily, 7:30 p. m.; 11:30 p. m.
Train No. 119. Leave Dallas, daily, 7:30 p. m.; 11:30 p. m.
Train No. 120. Leave Dallas, daily, 7:30 p. m.; 11:30 p. m.
Train No. 121. Leave Dallas, daily, 7:30 p. m.; 11:30 p. m.
Train No. 122. Leave Dallas, daily, 7:30 p. m.; 11:30 p. m.
Train No. 123. Leave Dallas, daily, 7:30 p. m.; 11:30 p. m.
Train No. 124. Leave Dallas, daily, 7:30 p. m.; 11:30 p. m.
Train No. 125. Leave Dallas, daily, 7:30 p. m.; 11:30 p. m.
Train No. 126. Leave Dallas, daily, 7:30 p. m.; 11:30 p. m.
Train No. 127. Leave Dallas, daily, 7:30 p. m.; 11:30 p. m.
Train No. 128. Leave Dallas, daily, 7:30 p. m.; 11:30 p. m.
Train No. 129. Leave Dallas, daily, 7:30 p. m.; 11:30 p. m.
Train No. 130. Leave Dallas, daily, 7:30 p. m.; 11:30 p. m.
Train No. 131. Leave Dallas, daily, 7:30 p. m.; 11:30 p. m.
Train No. 132. Leave Dallas, daily, 7:30 p. m.; 11:30 p. m.
Train No. 133. Leave Dallas, daily, 7:30 p. m.; 11:30 p. m.
Train No. 134. Leave Dallas, daily, 7:30 p. m.; 11:30 p. m.
Train No. 135. Leave Dallas, daily, 7:30 p. m.; 11:30 p. m.
Train No. 136. Leave Dallas, daily, 7:30 p. m.; 11:30 p. m.
Train No. 137. Leave Dallas, daily, 7:30 p. m.; 11:30 p. m.
Train No. 138. Leave Dallas, daily, 7:30 p. m.; 11:30 p. m.
Train No. 139. Leave Dallas, daily, 7:30 p. m.; 11:30 p. m.
Train No. 140. Leave Dallas, daily, 7:30 p. m.; 11:30 p. m.
Train No. 141. Leave Dallas, daily, 7:30 p. m.; 11:30 p. m.
Train No. 142. Leave Dallas, daily, 7:30 p. m.; 11:30 p. m.
Train No. 143. Leave Dallas, daily, 7:30 p. m.; 11:30 p. m.
Train No. 144. Leave Dallas, daily, 7:30 p. m.; 11:30 p. m.
Train No. 145. Leave Dallas, daily, 7:30 p. m.; 11:30 p. m.
Train No. 146. Leave Dallas, daily, 7:30 p. m.; 11:30 p. m.
Train No. 147. Leave Dallas, daily, 7:30 p. m.; 11:30 p. m.
Train No. 148. Leave Dallas, daily, 7:30 p. m.; 11:30 p. m.
Train No. 149. Leave Dallas, daily, 7:30 p. m.; 11:30 p. m.
Train No. 150. Leave Dallas, daily, 7:30 p. m.; 11:30 p. m.
Train No. 151. Leave Dallas, daily, 7:30 p. m.; 11:30 p. m.
Train No. 152. Leave Dallas, daily, 7:30 p. m.; 11:30 p. m.
Train No. 153. Leave Dallas, daily, 7:30 p. m.; 11:30 p. m.
Train No. 154. Leave Dallas, daily, 7:30 p. m.; 11:30 p. m.
Train No. 155. Leave Dallas, daily, 7:30 p. m.; 11:30 p. m.
Train No. 156. Leave Dallas, daily, 7:30 p. m.; 11:30 p. m.
Train No. 157. Leave Dallas, daily, 7:30 p. m.; 11:30 p. m.
Train No. 158. Leave Dallas, daily, 7:30 p. m.; 11:30 p. m.
Train No. 159. Leave Dallas, daily, 7:30 p. m.; 11:30 p. m.
Train No. 160. Leave Dallas, daily, 7:30 p. m.; 11:30 p. m.
Train No. 161. Leave Dallas, daily, 7:30 p. m.; 11:30 p. m.
Train No. 162. Leave Dallas, daily, 7:30 p. m.; 11:30 p. m.
Train No. 163. Leave Dallas, daily, 7:30 p. m.; 11:30 p. m.
Train No. 164. Leave Dallas, daily, 7:30 p. m.; 11:30 p. m.
Train No. 165. Leave Dallas, daily, 7:30 p. m.; 11:30 p. m.
Train No. 166. Leave Dallas, daily, 7:30 p. m.; 11:30 p. m.
Train No. 167. Leave Dallas, daily, 7:30 p. m.; 11:30 p. m.
Train No. 168. Leave Dallas, daily, 7:30 p. m.; 11:30 p. m.
Train No. 169. Leave Dallas, daily, 7:30 p. m.; 11:30 p. m.
Train No. 170. Leave Dallas, daily, 7:30 p. m.; 11:30 p. m.
Train No. 171. Leave Dallas, daily, 7:30 p. m.; 11:30 p. m.
Train No. 172. Leave Dallas, daily, 7:30 p. m.; 11:30 p. m.
Train No. 173. Leave Dallas, daily, 7:30 p. m.; 11:30 p. m.
Train No. 174. Leave Dallas, daily, 7:30 p. m.; 11:30 p. m.
Train No. 175. Leave Dallas, daily, 7:30 p. m.; 11:30 p. m.
Train No. 176. Leave Dallas, daily, 7:30 p. m.; 11:30 p. m.
Train No. 177. Leave Dallas, daily, 7:30 p. m.; 11:30 p. m.
Train No. 178. Leave Dallas, daily, 7:30 p. m.; 11:30 p. m.
Train No. 179. Leave Dallas, daily, 7:30 p. m.; 11:30 p. m.
Train No. 180. Leave Dallas, daily, 7:30 p. m.; 11:30 p. m.
Train No. 181. Leave Dallas, daily, 7:30 p. m.; 11:30 p. m.
Train No. 182. Leave Dallas, daily, 7:30 p. m.; 11:30 p. m.
Train No. 183. Leave Dallas, daily, 7:30 p. m.; 11:30 p. m.
Train No. 184. Leave Dallas, daily, 7:30 p. m.; 11:30 p. m.
Train No. 185. Leave Dallas, daily, 7:30 p. m.; 11:30 p. m.
Train No. 186. Leave Dallas, daily, 7:30 p. m.; 11:30 p. m.
Train No. 187. Leave Dallas, daily, 7:30 p. m.; 11:30 p. m.
Train No. 188. Leave Dallas, daily, 7:30 p. m.; 11:30 p. m.
Train No. 189. Leave Dallas, daily, 7:30 p. m.; 11:30 p. m.
Train No. 190. Leave Dallas, daily, 7:30 p. m.; 11:30 p. m.
Train No. 191. Leave Dallas, daily, 7:30 p. m.; 11:30 p. m.
Train No. 192. Leave Dallas, daily, 7:30 p. m.; 11:30 p. m.
Train No. 193. Leave Dallas, daily, 7:30 p. m.; 11:30 p. m.
Train No. 194. Leave Dallas, daily, 7:30 p. m.; 11:30 p. m.
Train No. 195. Leave Dallas, daily, 7:30 p. m.; 11:30 p. m.
Train No. 196. Leave Dallas, daily, 7:30 p. m.; 11:30 p. m.
Train No. 197. Leave Dallas, daily, 7:30 p. m.; 11:30 p. m.
Train No. 198. Leave Dallas, daily, 7:30 p. m.; 11:30 p. m.
Train No. 199. Leave Dallas, daily, 7:30 p. m.; 11:30 p. m.
Train No. 200. Leave Dallas, daily, 7:30 p. m.; 11:30 p. m.
Train No. 201. Leave Dallas, daily, 7:30 p. m.; 11:30 p. m.
Train No. 202. Leave Dallas, daily, 7:30 p. m.; 11:30 p. m.
Train No. 203. Leave Dallas, daily, 7:30 p. m.; 11:30 p. m.
Train No. 204. Leave Dallas, daily, 7:30 p. m.; 11:30 p. m.
Train No. 205. Leave Dallas, daily, 7:30 p. m.; 11:30 p. m.
Train No. 206. Leave Dallas, daily, 7:30 p. m.; 11:30 p. m.
Train No. 207. Leave Dallas, daily, 7:30 p. m.; 11:30 p. m.
Train No. 208. Leave Dallas, daily, 7:30 p. m.; 11:30 p. m.
Train No. 209. Leave Dallas, daily, 7:30 p. m.; 11:30 p. m.
Train No. 210. Leave Dallas, daily, 7:30 p. m.; 11:30 p. m.
Train No. 211. Leave Dallas, daily, 7:30 p. m.; 11:30 p. m.
Train No. 212. Leave Dallas, daily, 7:30 p. m.; 11:30 p. m.
Train No. 213. Leave Dallas, daily, 7:30 p. m.; 11:30 p. m.
Train No. 214. Leave Dallas, daily, 7:30 p. m.; 11:30 p. m.
Train No. 215. Leave Dallas, daily, 7:30 p. m.; 11:30 p. m.
Train No. 216. Leave Dallas, daily, 7:30 p. m.; 11:30 p. m.
Train No. 217. Leave Dallas, daily, 7:30 p. m.; 11:30 p. m.
Train No. 218. Leave Dallas, daily, 7:30 p. m.; 11:30 p. m.
Train No. 219. Leave Dallas, daily, 7:30 p. m.; 11:30 p. m.
Train No. 220. Leave Dallas, daily, 7:30 p. m.; 11:30 p. m.
Train No. 221. Leave Dallas, daily, 7:30 p. m.; 11:30 p. m.
Train No. 222. Leave Dallas, daily, 7:30 p. m.; 11:30 p. m.
Train No. 223. Leave Dallas, daily, 7:30 p. m.; 11:30 p. m.
Train No. 224. Leave Dallas, daily, 7:30 p. m.; 11:30 p. m.
Train No. 225. Leave Dallas, daily, 7:30 p. m.; 11:30 p. m.
Train No. 226. Leave Dallas, daily, 7:30 p. m.; 11:30 p. m.
Train No. 227. Leave Dallas, daily, 7:30 p. m.; 11:30 p. m.
Train No. 228. Leave Dallas, daily, 7:30 p. m.; 11:30 p. m.
Train No. 229. Leave Dallas, daily, 7:30 p. m.; 11:30 p. m.
Train No. 230. Leave Dallas, daily, 7:30 p. m.; 11:30 p. m.
Train No. 231. Leave Dallas, daily, 7:30 p. m.; 11:30 p. m.
Train No. 232. Leave Dallas, daily, 7:30 p. m.; 11:30 p. m.
Train No. 233. Leave Dallas, daily, 7:30 p. m.; 11:30 p. m.
Train No. 234. Leave Dallas, daily, 7:30 p. m.; 11:30 p. m.
Train No. 235. Leave Dallas, daily, 7:30 p. m.; 11:30 p. m.
Train No. 236. Leave Dallas, daily, 7:30 p. m.; 11:30 p. m.
Train No. 237. Leave Dallas, daily, 7:30 p. m.; 11:30 p. m.
Train No. 238. Leave Dallas, daily, 7:30 p. m.; 11:30 p. m.
Train No. 239. Leave Dallas, daily, 7:30 p. m.; 11:30 p. m.
Train No. 240. Leave Dallas, daily, 7:30 p. m.; 11:30 p. m.
Train No. 241. Leave Dallas, daily, 7:30 p. m.; 11:30 p. m.
Train No. 242. Leave Dallas, daily, 7:30 p. m.; 11:30 p. m.
Train No. 243. Leave Dallas, daily, 7:30 p. m.; 11:30 p. m.
Train No. 244. Leave Dallas, daily, 7:30 p. m.; 11:30 p. m.
Train No. 245. Leave Dallas, daily, 7:30 p. m.; 11:30 p. m.
Train No. 246. Leave Dallas, daily, 7:30 p. m.; 11:30 p. m.
Train No. 247. Leave Dallas, daily, 7:30 p. m.; 11:30 p. m.
Train No. 248. Leave Dallas, daily, 7:30 p. m.; 11:30 p. m.
Train No. 249. Leave Dallas, daily, 7:30 p. m.; 11:30 p. m.
Train No. 250. Leave Dallas, daily, 7:30 p. m.; 11:30 p. m.
Train No. 251. Leave Dallas, daily, 7:30 p. m.; 11:30 p. m.
Train No. 252. Leave Dallas, daily, 7:30 p. m.; 11:30 p. m.
Train No. 253. Leave Dallas, daily, 7:30 p. m.; 11:30 p. m.
Train No. 254. Leave Dallas, daily, 7:30 p. m.; 11:30 p. m.
Train No. 255. Leave Dallas, daily, 7:30 p. m.; 11:30 p. m.
Train No. 256. Leave Dallas, daily, 7:30 p. m.; 11:30 p. m.
Train No. 257. Leave Dallas, daily, 7:30 p. m.; 11:30 p. m.
Train No. 258. Leave Dallas, daily, 7:30 p. m.; 11:30 p. m.
Train No. 259. Leave Dallas, daily, 7:30 p. m.; 11:30 p. m.
Train No. 260. Leave Dallas, daily, 7:30 p. m.; 11:30 p. m.
Train No. 261. Leave Dallas, daily, 7:30 p. m.; 11:30 p. m.
Train No. 262. Leave Dallas, daily, 7:30 p. m.; 11:30 p. m.
Train No. 263. Leave Dallas, daily, 7:30 p. m.; 11:30 p. m.
Train No. 264. Leave Dallas, daily, 7:30 p. m.; 11:30 p. m.
Train No. 265. Leave Dallas, daily, 7:30 p. m.; 11:30 p. m.
Train No. 266. Leave Dallas, daily, 7:30 p. m.; 11:30 p. m.
Train No. 267. Leave Dallas, daily, 7:30 p. m.; 11:30 p. m.
Train No. 268. Leave Dallas, daily, 7:30 p. m.; 11:30 p. m.
Train No. 269. Leave Dallas, daily, 7:30 p. m.; 11:30 p. m.
Train No. 270. Leave Dallas, daily, 7:30 p. m.; 11:30 p. m.
Train No. 271. Leave Dallas, daily, 7:30 p. m.; 11:30 p. m.
Train No. 272. Leave Dallas, daily, 7:30 p. m.; 11:30 p. m.
Train No. 273. Leave Dallas, daily, 7:30 p. m.; 11:30 p. m.
Train No. 274. Leave Dallas, daily, 7:30 p. m.; 11:30 p. m.
Train No. 275. Leave Dallas, daily, 7:30 p. m.; 11:30 p. m.
Train No. 276. Leave Dallas, daily, 7:30 p. m.; 11:30 p. m.
Train No. 277. Leave Dallas, daily, 7:30 p. m.; 11:30 p. m.
Train No. 278. Leave Dallas, daily, 7:30 p. m.; 11:30 p. m.
Train No. 279. Leave Dallas, daily, 7:30 p. m.; 11:30 p. m.
Train No. 280. Leave Dallas, daily, 7:30 p. m.; 11:30 p. m.
Train No. 281. Leave Dallas, daily, 7:30 p. m.; 11:30 p. m.
Train No. 282. Leave Dallas, daily, 7:30 p. m.; 11:30 p. m.
Train No. 283. Leave Dallas, daily, 7:30 p. m.; 11:30 p. m.
Train No. 284. Leave Dallas, daily, 7:30 p. m.; 11:30 p. m.
Train No. 285. Leave Dallas, daily, 7:30 p. m.; 11:30 p. m.
Train No. 286. Leave Dallas, daily, 7:30 p. m.; 11:30 p. m.
Train No. 287. Leave Dallas, daily, 7:30 p. m.; 11:30 p. m.
Train No. 288. Leave Dallas, daily, 7:30 p. m.; 11:30 p. m.
Train No. 289. Leave Dallas, daily, 7:30 p. m.; 11:30 p. m.
Train No. 290. Leave Dallas, daily, 7:30 p. m.; 11:30 p. m.
Train No. 291. Leave Dallas, daily, 7:30 p. m.; 11:30 p. m.
Train No. 292. Leave Dallas, daily, 7:30 p. m.; 11:30 p. m.
Train No. 293. Leave Dallas, daily, 7:30 p. m.; 11:30 p. m.
Train No. 294. Leave Dallas, daily, 7:30 p. m.; 11:30 p. m.
Train No. 295. Leave Dallas, daily, 7:30 p. m.; 11:30 p. m.
Train No. 296. Leave Dallas, daily, 7:30 p. m.; 11:30 p. m.
Train No. 297. Leave Dallas, daily, 7:30 p. m.; 11:30 p. m.
Train No. 298. Leave Dallas, daily, 7:30 p. m.; 11:30 p. m.
Train No. 299. Leave Dallas, daily, 7:30 p. m.; 11:30 p. m.
Train No. 300. Leave Dallas, daily, 7:30 p. m.; 11:30 p. m.
Train No. 301. Leave Dallas, daily, 7:30 p. m.; 11:30 p. m.
Train No. 302. Leave Dallas, daily, 7:30 p. m.; 11:30 p. m.
Train No. 303. Leave Dallas, daily, 7:30 p. m.; 11:30 p. m.
Train No. 304. Leave Dallas, daily, 7:30 p. m.; 11:30 p. m.
Train No. 305. Leave Dallas, daily, 7:30 p. m.; 11:30 p. m.
Train No. 306. Leave Dallas, daily, 7:30 p. m.; 11:30 p. m.
Train No. 307. Leave Dallas, daily, 7:30 p. m.; 11:30 p. m.
Train No. 308. Leave Dallas, daily, 7:30 p. m.; 11:30 p. m.
Train No. 309. Leave Dallas, daily, 7:30 p. m.; 11:30 p. m.
Train No. 310. Leave Dallas, daily, 7:30 p. m.; 11:30 p. m.
Train No. 311. Leave Dallas, daily, 7:30 p. m.; 11:30 p. m.
Train No. 312. Leave Dallas, daily, 7:30 p. m.; 11:30 p. m.
Train No. 313. Leave Dallas, daily, 7:30 p. m.; 11:30 p. m.
Train No. 314. Leave Dallas, daily, 7:30 p. m.; 11:30 p. m.
Train No. 315. Leave Dallas, daily, 7:30 p. m.; 11:30 p. m.
Train No. 316. Leave Dallas, daily, 7:30 p. m.; 11:30 p. m.
Train No. 317. Leave Dallas, daily, 7:30 p. m.; 11:30 p. m.
Train No. 318. Leave Dallas, daily, 7:30 p. m.; 11:30 p. m.
Train No. 319. Leave Dallas, daily, 7:30 p. m.; 11:30 p. m.
Train No. 320. Leave Dallas, daily, 7:30 p. m.; 11:30 p. m.
Train No. 321. Leave Dallas, daily, 7:30 p. m.; 11:30 p. m.
Train No. 322. Leave Dallas, daily, 7:30 p. m.; 11:30 p. m.
Train No. 323. Leave Dallas, daily, 7:30 p. m.; 11:30 p. m.
Train No. 324. Leave Dallas, daily, 7:30 p. m.; 11:30 p. m.
Train No. 325. Leave Dallas, daily, 7:30 p. m.; 11:30 p. m.
Train No. 326. Leave Dallas, daily, 7:30 p. m.; 11:30 p. m.
Train No. 327. Leave Dallas, daily, 7:30 p. m.; 11:30 p. m.
Train No. 328. Leave Dallas, daily, 7:30 p. m.; 11:30 p. m.
Train No. 329. Leave Dallas, daily, 7:30 p. m.; 11:30 p. m.
Train No. 330. Leave Dallas, daily, 7:30 p. m.; 11:30 p. m.
Train No. 331. Leave Dallas, daily, 7:30 p. m.; 11:30 p. m.
Train No. 332. Leave Dallas, daily, 7:30 p. m.; 11:30 p. m.
Train No. 333. Leave Dallas, daily, 7:30 p. m.; 11:30 p. m.
Train No. 334. Leave Dallas, daily, 7:30 p. m.; 11:30 p. m.
Train No. 335. Leave Dallas, daily, 7:30 p. m.; 11:30 p. m.
Train No. 336. Leave Dallas, daily, 7:30 p. m.; 11:30 p. m.
Train No. 337. Leave Dallas, daily, 7:30 p. m.; 11:30 p. m.
Train No. 338. Leave Dallas, daily, 7:30 p. m.; 11:30 p. m.
Train No. 339. Leave Dallas, daily, 7:30 p. m.; 11:30 p. m.
Train No. 340. Leave Dallas, daily, 7:30 p. m.; 11:30 p. m.
Train No. 341. Leave Dallas, daily, 7:30 p. m.; 11:30 p. m.
Train No. 342. Leave Dallas, daily, 7:30 p. m.; 11:30 p. m.
Train No. 343. Leave Dallas, daily, 7:30 p. m.; 11:30 p. m.
Train No. 344. Leave Dallas, daily, 7:30 p. m.; 11:30 p. m.
Train No. 345. Leave Dallas, daily, 7:30 p. m.; 11:30 p. m.
Train No. 346. Leave Dallas, daily, 7:30 p. m.; 11:30 p. m.
Train No. 347. Leave Dallas, daily, 7:30 p. m.; 11:30 p. m.
Train No. 348. Leave Dallas, daily, 7:30 p. m.; 11:30 p. m.
Train No. 349. Leave Dallas, daily, 7:30 p. m.; 11:30 p. m.
Train No. 350. Leave Dallas, daily, 7:30 p. m.; 11:30 p. m.
Train No. 351. Leave Dallas, daily, 7:30 p. m.; 11:30 p. m.
Train No. 352. Leave Dallas, daily, 7:30 p. m.; 11:30 p. m.
Train No. 353. Leave Dallas, daily, 7:30 p. m.; 11:30 p. m.
Train No. 354. Leave Dallas, daily, 7:30 p. m.; 11:30 p. m.
Train No. 355. Leave Dallas, daily, 7:30 p. m.; 11:30 p. m.
Train No. 356. Leave Dallas, daily, 7:30 p. m.; 11:30 p. m.
Train No. 357. Leave Dallas, daily, 7:30 p. m.; 11:30 p. m.
Train No. 358. Leave Dallas, daily, 7:30 p. m.; 11:30 p. m.
Train No. 359. Leave Dallas, daily, 7:30 p. m.; 11:30 p. m.
Train No.