

AMERICAN TRAINS BRITISH AVIATORS

George Beatty Coaches Air
Men Who Go to the Front.

HOW STUDENTS ARE TAUGHT

Each Lesson Occupies Fifteen Minutes, and Instructor Sits In the Seat Beside the Recruit—Practice Proceeds In Winds Up to Twenty Miles an Hour. Two Kinds of Machines Are Used.

London.—If there is one man more than another who has profited by the war that man is George W. Beatty, the American aviator, who has established a school of aviation at the well known Hendon aerodrome.

At the outbreak of hostilities the aerodrome underwent a complete metamorphosis. The exhibition flights were abandoned and the place completely taken over by the British government—acrobatic, hangar and aerodrome. The exigencies of the war called for the construction of new aeroplanes and tuition of many pilots for the royal flying wing. Needless to say, there were innumerable recruits clamoring to become proficient air men so as to render good service to their country in the matter of reconnoitering and in scouting work.

Lieutenant Porte of the royal navy, who, as most Americans are aware, was previously busying himself with the preparation of a hydronaeroplane



Photo by American Press Association.

GEORGE W. BEATTY IS TURNING OUT EFFICIENT AVIATORS FOR ENGLAND'S NAVY.

with which he had hoped to cross the Atlantic, was appointed commander of the aerodrome, while Claude Grahame-White was given a commission as flight lieutenant in the navy.

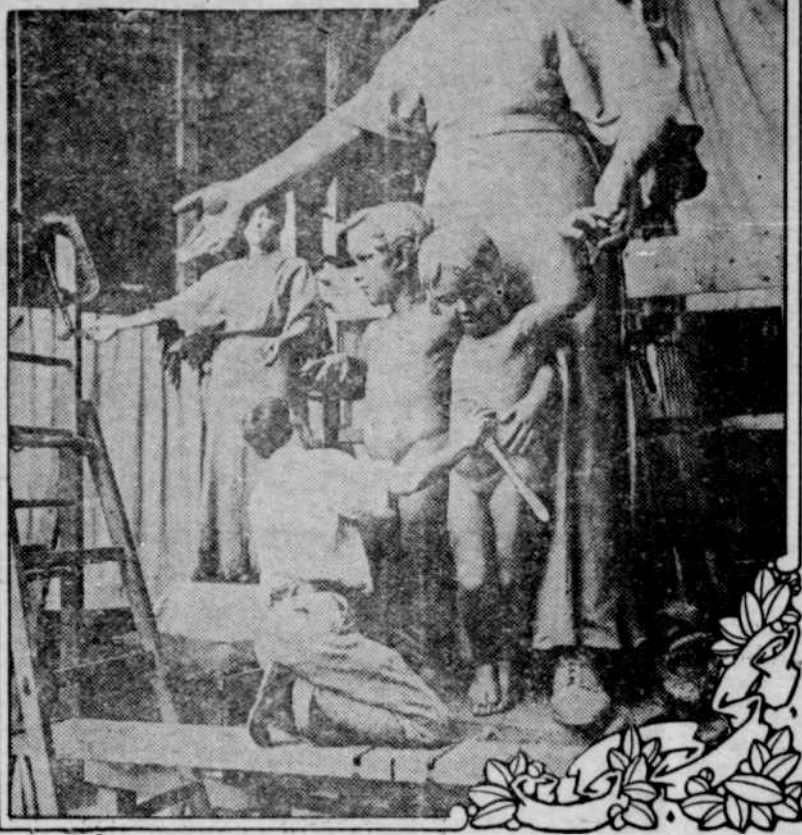
The whole scene at Hendon was altered. Instead of walking about in civilian attire men were now to be seen in the uniform of the British navy, while a detachment of marines formed an encampment on the fringe of the great inclosure and carried out the duties of safeguarding the numerous aeroplanes and their hangars. As has been the case in so many other departments of the state, a complete change took place in the appearance of this most important adjunct of British defenses, and thus it came about that George Beatty came upon his great opportunity.

Grahame-White, finding it was necessary to devote his first attention to the training of pupils for the navy direct, had to look elsewhere for a school where lay pupils could complete their flying apprenticeship. No better man could have been found than Beatty to take over this surplus from the Grahame-White school, and the aspirants were duly transferred to the Beatty school. Mr. Beatty was equal to the occasion and quite in his element. He at once took these students in hand and gave them some good practice on the biplane, a machine with two propellers.

The dual control of this type of machine renders the tuition of pupils exceptionally rapid and thorough. Each lesson occupies about fifteen minutes, and the student of aviation sits side by side with his tutor, keenly observing as every move. The various evolutions in the manipulation of the machine are thus actually felt, as each movement by the pilot is accompanied by a corresponding motion on the pupil's side of the biplane, becomes transferred and hence necessarily enables the pupil to be in sensitive touch with

Superb Sculptured Group Will Exalt Pioneer Mother at the Panama-Pacific Inter- national Exposition

THE woman of the pioneer era will be exalted in the Pioneer Mother Monument, the work of Charles Grafly, one of America's foremost sculptors, which will be shown at the Panama-Pacific International Exposition. This monument in bronze is designed to perpetuate a spirit of love and veneration for the women who crossed the plains and played their parts in the settlement of the west. The school children of California helped pay for the statue.



Charles Grafly at Work on His Monument.

the motions changes directed by his master.

Again, the explanations and instructions are more readily conveyed than in the case of the average biplane, where you do not get in close proximity, as the pupil and teacher do not sit side by side. Practice proceeds in winds up to twenty miles an hour.

Mr. Beatty does not believe in giving his students experiences on the biplane only. He also utilizes the monoplane for intermediate trials.

Mr. Beatty is a big favorite with his pupils.

The Spokane Spokesman Review in speaking of the coming sessions of the Oregon, Washington and Idaho legislatures says: "Economy must be the watch word. The legislators will do well to remember always that they represent, not themselves, but their constituents. The people are likely this winter to keep close tab on their legislatures. It is their duty and their advantage to do so."

AN APPALLING DEFENSE OF MODERN WARFARE

Quite the most atrocious defense of war—incidentally it is also a bitter attack on peace as an enemy of mankind—is furnished by Edgar Stanton Maclay, author of "The History of the Navy," in the North American Review.

Falling back on exploded and forgotten Malthus, his point is that if we let humanity increase in peace, we shall starve:

"We must not close our eyes to the fact that there are fewer than thirty million square miles of land suitable for the support of mankind on the globe. Centuries of experience shows that this land will not support more than a hundred persons per square mile; so that the world's population would seem to be limited to three billions. Already the earth's population exceeds half this limit. If all nations are to cease preparations for war and concentrate their energies in the pursuit of peace and happiness, the world's population will be more than three billions in less than a single generation. Obviously, if the world's population is not kept down by war, it will be restricted by other means, etc.

Nothing more atrocious than this can be imagined.

In the first place, "centuries of experience" are worthless in view of the fact that the world has not yet begun to learn the possibilities of the soil in supporting life. The arbitrary limit of a hundred people to the square mile is absurd. Belgium supports 580 people to the square mile in prosperity and comfort—or did before a wicked war blasted it—and Holland 416.

To say that Providence intended that humanity should curb its natural increase by war is to insult Providence by denying it ordinary intelligence.

And if society must kill to prevent over population, why kill its fittest, as war does? War is not a survival of the fit, but of the unfit—the fit are taken and the culls are left to breed inferior future generations.

If society must kill to protect itself, why not kill intelligently? Why not periodically slaughter the unfit?

The new year will be a busy and prosperous one.

Real Estate Bargain

NEARLY 2 acres of Fruit, Berries and Poultry. Good Garden Land. One block from paved street. All fenced, including two poultry yards. Poultry house 12 x 48 feet. Running water. Put a little bungalow thereon and you have valuable income property in Cottage Grove. The 2 acres for \$1,000; 1 3-4 acres \$850; or 1 acre of it for \$650. \$50 fruit sales this year. If interested apply to

The Cottage Grove Leader

California Real Estate

For Sale or Exchange

See Photos in Leader's Show Window.

24 acres 1 1/2 miles from Kirkwood, Cal. 5 room house, barn 18 x 30, 6 colony chicken houses, fenced and cross-fenced, good well with pump, 6 acre bearing orchard, no waste land, good soil, price \$4500, mortgage \$600. Will trade for ranch of same value in Oregon.

10 acres, some trees and shrubs, fitted up for the poultry business, 3 miles from Corning, Cal. barn for horse, cow, tools, and buggy, concrete foundation, 6 room house with concrete cellar and bath, windmill, tank house, 5000 gal. tank, 50 foot brooder house, price \$2500. What have you to trade?

5 acres 1 1/2 miles from Corning, all in choice fruit and berries, 36 orange and grapefruit, 80 thornless cactus, 2 acres of alfalfa between trees, electric light and pumping plant, fine 5 room bungalow, 2 porches, bath; barn, poultry house, roses shrubs, etc., on macadam road, \$3500. Will trade for small ranch with good soil.

160 acres 5 miles from Corning, on a good road, hog tight fences, 6 room old house, barn, 2 good springs, good soil all level but 5 acres, all has been cultivated, price \$40 acre. Will trade for Oregon property.

10 acres 2 1/2 miles from Corning, on state highway, 250 young apricot and almond trees, 3 room bungalow with porch, out buildings, fine soil, good well, half mile to school, \$2800. Will trade for small ranch.

10 acres improved 3 miles from Pomona, Calif. \$7000. 1 residence lot close in at Pomona, \$650 5 acres improved at Yucaspas, Calif. \$2500. Will trade all for good ranch and some cash.

33 acres, 20 in orchard [10 a. prunes, 5 oranges, 5 peaches] olives around the orange tract on two sides, row of large trees north of driveway, house and barn, bath, toilet, septic tank, 1 1/2 miles from Corning, Cal. \$15,000. To trade for a dairy ranch.

For further particulars apply to
The Leader.

Real Estate Bargains.

Wanted, to trade Grants Pass residence property valued at \$1,300 in first class repair and close in for team and wagon, balance on easy terms. No place of this character vacant in city. Address 307 8th street, Grants Pass Oregon. d16

For Sale or Exchange—A fine home with 3-acres of fruit, berries and garden on paved street in Cottage Grove, fruit sales over \$100 this year. Will sell or exchange for ranch or land. Fine home for a retired farmer or business man.

A Bargain—80 acres, cruises 2,190,000 feet good saw timber besides piling; 8 room house, frame barn six stalls, stock shed, good springs, 20 acres slashed and burned, 4 acres garden, 3 miles from Cottage Grove, \$3,200. Ask the Leader.

An 8 acre berry, fruit and poultry ranch, one and three quarter miles from Walker Station, north of Cottage Grove. All fenced with wire and pickets, one acre in berries and fruit, 4-room house, barn capacity six horses, 100 cords of good wood timber, large woodshed, poultry house all new, two good springs, six acres of woodland pasture, subject to cultivation when cleared up. On good county road, near school. Price \$600 cash. Inquire of J. H. Langston, Walker, Ore.

For Sale Or Trade.

200 acres of Butte Valley, Siskiyou county, California land, ideal for alfalfa, sub-irrigated, no buildings, 2 1-2 miles of railroad. For further information inquire of W. Nichols, residence 3 miles south of Cottage Grove. G

For Exchange.

Rogue River Valley Farm, 26 acres, 15 acres in apples and pears, 2 miles from Grants Pass, valley land all in cultivation, value \$6,000. Will exchange for a farm near Cottage Grove of equal value.

M. C. GARVER,
Grants Pass, Ore.

jlp

You would do well to patronize those business men who advertise.

For Sale or Rent.

60 acres of good land for sale or rent, 52 acres under cultivation, close in. For particulars apply to Mrs. S. E. Blair, 215 West Park st. Portland, Or. j22p

Bargain In Lumber.

17,000 feet of good rough lumber at Veatch Spur for sale at a bargain, or will trade for cow or young stock. Inquire at Leader office.

First National Bank

Cottage, Grove, Ore.

DEPOSITORY
United States Postal
Savings

DEPOSITORY
Lane County

DEPOSITORY
City of Cottage Grove

Capital and Surplus
\$50,000.00

H. EAKIN, President
T. C. WHEELER, Cashier
WORTH HARVEY, Ass't Cash'r

BLACKSMITH

The place to get your
horses shod and good
Repair Work.

Joe Baker

Butter wrappers printed while
you wait, at the Leader office.