

at Vast Panama-Pacific International Exposition

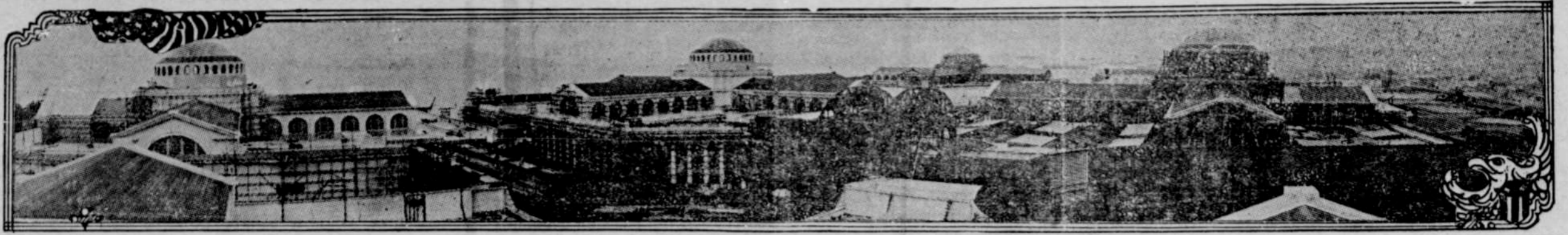


Photo copyright, 1914, by Panama-Pacific International Exposition Co., H. S. Crocker Co., official photographers.

How a Portion of the Main Group of Exhibit Palaces at the Panama-Pacific International Exposition Looks Ten Months Before the Gates Open

THIS view, taken from the roof of the completed Palace of Education and Social Economy, shows nearly fifty acres under roof. Along the bay shore, beginning at the left, are the Palaces of Food Products, Agriculture, Transportation and Mines. In the distance is the completed Palace of Machinery, covering about nine acres, in which exhibits are now being installed. To the right are the Palaces of Liberal Arts, Manufactures and Varied Industries. In the left background is the Golden Gate. The photograph was taken during the latter part of March, and great progress has been made since that time. The picture was selected because it shows the vastness of the building operations.

Navy Yards and Naval Stations.

There are eight navy yards, located at Washington, Brooklyn, Boston, Norfolk, Va.; Portsmouth, N. H.; Philadelphia, Mare Island navy yard, near San Francisco, and Puget Sound navy yard, at Bremerton, Wash. There are naval stations at Charleston, S. C.; Key West, Fla.; Great Lakes, North Chicago; a training station at Yerba Buena Island, Cal.; a torpedo and training station at Newport, R. I., and the Naval War college at the same place. Naval stations have been established at Tutuila, Samoa; Island of Guam; Guantánamo, Cuba; Honolulu, Cavite and Olongapo, Philippine Islands. The latter has become an important naval base for the Asiatic fleet.—Philadelphia Press.

First Opera Glasses.

The single opera glass was first used in the time of Louis XIV. It became the rage, and everybody used one. The double opera glass (Jumelle) was invented in 1825, but did not at first find favor with women. A treatise was written in the early part of the nineteenth century on l'art de logerger, in which it was shown that a woman with fine arms would hold the glass with both hands, if she were blessed with fine hands she would take off her gloves, if her neck were long she would recline back in her chair, and so on. It was quite a treatise on coquetry.

Not a Vacation Prospect.

"My boy," said the professor, "if you keep on as you have started and study hard you may be president of the United States some day."
"Yes," replied the young man gloomily; "and then I'll have to start in and study a whole lot harder."—Washington Star.

Yellow Fever.

The first appearance of yellow fever is said to have been among the sailors of Columbus in 1495.

Real Shaves in India.

The natives of India go in a great deal for shaving and do not confine themselves to merely shaving the chin, but on occasion will shave the eyebrows as well, and in the case of certain rites and ceremonies the head, too, is completely shaved. No soap is used, but the beard is softened by being rubbed over with a little cold water. The razors employed are generally of native manufacture and have fixed handles that do not fold. Moreover, they are very much heavier than those of European make. The strop consists of a small piece of leather the size of a man's palm and is held in the open hand during stropping. The recognized cost of a shave is 1 pice, which is the exact equivalent of 1 farthing.—Cleveland Plain Dealer.

An Ignoble Use.

Washington Irving in "Crayon Papers" says: "I was once at an evening entertainment given by the Duke of Wellington at Apsley House to William IV. The duke had manifested his admiration of his great adversary, Napoleon, by having portraits of him in different parts of the house. At the bottom of the grand staircase stood the colossal statue of the emperor by Canova. It was of marble in the antique style, with one arm partly extended, holding a figure of Victory. Over this arm the ladies in tripping upstairs to the ball had thrown their shawls. It was a singular office for the statue of Napoleon to perform in the mansion of the Duke of Wellington! Imperial Caesar, dead and turned to clay!

Qualified.

"This," said the able manager, "is a difficult part to play. The character doesn't have to speak a word during the performance, and yet he is on the stage the greater part of the time. Do you think you can do it?"
"I should think I can!" exclaimed the actor. "I'm well qualified for the part. I've been married for twenty years and haven't had a chance to say a word yet."

Old Love Letters.

Wife—I came across a bundle of your old love letters today. Husband—Did you read them over? Wife—Yes. Husband—And what was the effect of that perusal? Wife—I wondered which was the bigger fool—you for writing them or I for marrying you after receiving them.

A Hint.

"Yes," said the young student thoughtfully, "when I get interested in a subject I never stop until I have embraced it thoroughly."
"That's nice," was the hesitating reply. "Do-do you think I'm an interesting subject?"

Wisdom of Solomon.

The reason Solomon is called the wisest man is because he never tried to tell each of his wives that she was the only woman he ever loved.—Cincinnati Enquirer.

Both Busy.

"The girl who knows she is pretty makes a fool of herself."
"And the girl who doesn't know she is pretty makes a fool of some man."—Houston Post.

The Competitors.

"Is there much competition in your office?" asked Miss Skittles.
"Sure!" replied the facetious Miss Skittles. "Between the mirror and the clock."—Puck.

The KITCHEN CUPBOARD

WITH A CUP OF COFFEE.

MANY dainty and wholesome desserts may be made with coffee.

Cold coffee, the cupful that is left from breakfast or dinner, may be utilized for this purpose. When putting it away for use in the next day's dessert strain off the grounds and put it in a covered vessel to keep.

Coffee Blancmange.—Take a cupful each of milk and coffee and boil with two tablespoonfuls of sugar. Thicken with two tablespoonfuls of cornstarch rubbed smooth in a little cold milk. Pour in mold and serve with cream.

Two Dainty Desserts.

Coffee Custard.—To a cupful of very strong coffee add a cupful of thin cream, four beaten eggs, half a cupful of sugar and one-half teaspoonful of salt. Strain into small buttered cups, stand them in a pan of boiling water and bake in a moderate oven until firm in the center. Serve ice cold.

Coffee Mousse.—Take one pint of cream and whip it very stiff; then take one or one and one-half cupfuls of coffee. Have your coffee cold, mix with a cupful of sugar; then beat separately three egg yolks and one whole egg. Mix with coffee and sugar; then stir in your cream. Mix it all well; then turn into a lard pail. Freeze, pack in ice cream tub. You can pack it in any tub that is deep enough to cover the pail with ice. Have a hole in the side of the tub for water to run out. Use plenty of coarse salt, cover the top of pail with ice and salt; then spread heavy cover over that. Let it stand five or six hours.

Delicious Pastry.

Coffee Eclairs.—Pour a quarter of a pint of water into a saucepan with one ounce of butter and as soon as the water boils stir in two ounces of dry flour which has been passed through a sieve. Do not stop stirring until a thick smooth paste is formed. Take the saucepan from the stove and when the paste has cooled a little add first one egg yolk and then a second, beating each thoroughly into the other ingredients; then stir in half a tablespoonful of sugar, a few drops of vanilla essence and lastly the white of one egg whisked to a stiff froth. Turn the paste on to a floured board and divide it into small pieces. Form these into "fingers," place them on a buttered baking sheet and bake in a moderate oven from a quarter of an hour to twenty minutes. When done let the eclairs cool on a rack; then carefully slit them down one side, scoop out a little of the soft part and fill them with whipped cream flavored with vanilla and when all are ready cover them with a layer of coffee icing.

Anna Thompson

England's Great Aquarium.

The aquarium at Brighton, England is one of the largest and most beautiful aquaria in Europe. It is operated with annexes, like a theater and restaurant, but the place is admirably maintained and during the summer is one of the attractions of the English watering places.

Unfair Advantage.

"Your valet went on strike, did he? I hope you did not accede to his demands?"
"Pon my life, I had to, old chap. The cunning creature actually threatened to leave me one morning when I was half dressed."—London Opinion

A Trying Position.

"This is going to put me in a very trying position, he muttered.
"What, my dear?" she asked.
"I have been summoned to serve on a jury."—London Telegraph

Nettle and Bee.

Little Bertie had just been stung by a nettle. "Mother," he asked, "if a bee settled on a nettle would the bee sting the nettle or would the nettle sting the bee?"

Galvanized Iron.

Galvanized iron is merely iron dipped in molten zinc. The coating is not electrically applied, as the word galvanized seems to imply.

OUR ALLY.



—Reynolds in Portland Oregonian.

Two Big Days' CELEBRATION In Eugene, July 3-4

Grand Street Parade, Automobile Parade, Moter Cycle Races, Baseball Games, and all Kinds of Sports. Cash Prizes.

BIG STREET DANCE ON PAVEMENT

Fire Department Drill, and Fireworks Display in Evening. Music by 3 Bands

We Want You to Come

First National Bank

Cottage, Grove, Ore.

DEPOSITORY
United States Postal
Savings

DEPOSITORY
Lane County
DEPOSITORY
City of Cottage Grove

Capital and Surplus
\$50,000.00

H. EAKIN, President.
T. C. WHEELER, Cashier.
WORTH HARVEY, Asst. Cash'r

Pianos

Musical Merchandise
Edison Phonographs
Victor Victrolas
Singer Sewing Machines

Mills & Roach Music House
First Nat'l Bank Bldg.

BLACKSMITH

The place to get your horses shod and good Repair Work.

Joe Baker



Blacksmithing

Correct Method of Horseshoeing

Wagon Making

And General Repair Work

South of First National Bank
Sixth Street

Spriggs Bros.

Cottage Grove
Transfer Company

L. L. HARREL, Prop.

Fire Proof Feed
and Storage Barn.

ALL KINDS OF HAULING
AND HEAVY DRAY WORK

Piano Moving a Specialty
Phone, Office 72

Auto Dray Quick Delivery

PROFESSIONAL CARDS

Practices in all Courts Woodward Building

J. G. JOHNSON

ATTORNEY AT LAW
NOTARY PUBLIC

Pho No. 43 Cottage Grove, Ore.

J. S. Medley

ATTORNEY AT LAW

Special Attention Given to Mining and Corporation Law.
Office, Woodward Building.

KINTER BROS.

SUITCASES
TRUNKS
AND BAGS

The House Furnishers

PHONE 6

The Metsan Shop

High grade Family Groceries of the Best Brands, pure, fresh and wholesome. Cranberries, nuts and fruits.

Something Different

THE TWICE-A-WEEK
LEADER FOR \$1.50

F. L. INGRAM, D. M. D.

DENTIST

Office phone 5 Residence 1211