



WORLD'S GREATEST EXPOSITION NEARING COMPLETION

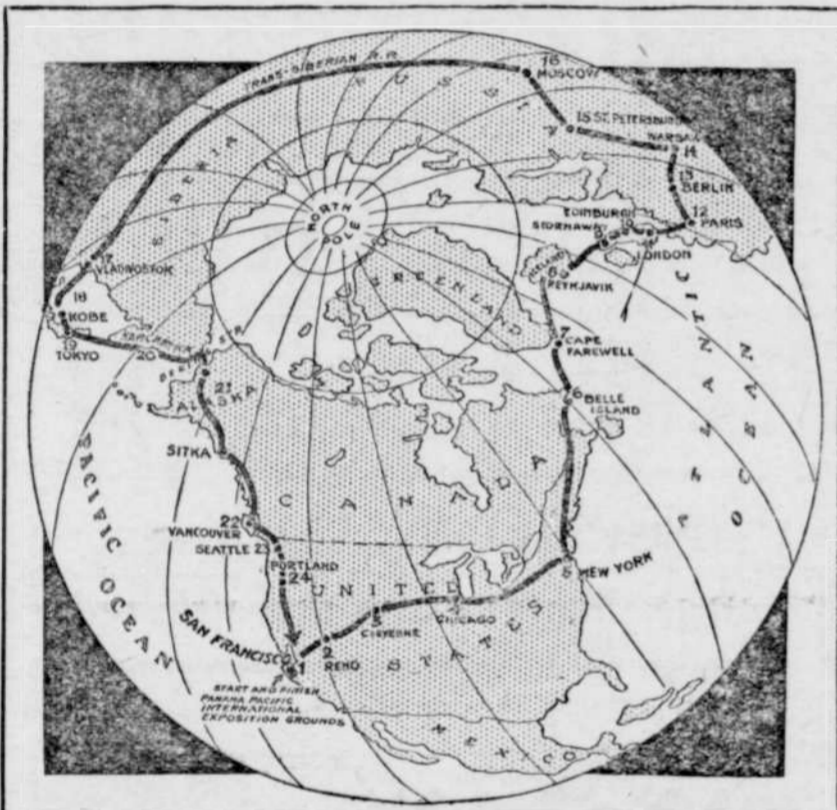
Splendors of the Panama-Pacific International Exposition Revealed by Progress at San Francisco.

SUPERB WORKS OF SCULPTURE AND ART IN COLOSSAL EXHIBIT PALACES FOR AMERICA'S PANAMA CANAL CELEBRATION.

GLINTS of gold from vast oriental domes, Venetian blue on minarets, prodigious works of sculpture and the arrival of notables from all parts of the globe give glimpses of the great Panama-Pacific International Exposition as it will appear when its gates swing open to the world in San Francisco on Feb. 20, 1915.

Not for many years will the world be enabled to enjoy so marvelous a collection of the works of contemporary sculptors. The World's Columbian Exposition at Chicago first proved that the greatest talent might be engaged to produce work of even temporary value. Since then more and more attention has been given at each succeeding exposition to sculpture as a form of decoration, and the great Panama-Pacific International Exposition at San Francisco promises to surpass even Chicago's exquisite display.

Every phase of the exposition is far advanced. Thirty-four of the world's nations will participate with government displays, Argentina leading with a government appropriation of \$1,300,000 gold.



AIRSHIPS WILL RACE AROUND THE GLOBE FROM SAN FRANCISCO IN 1915.

AERONAUTS from all the civilized nations of the globe with every standard type of air craft driven by motors will participate in an aerial race around the world, which will be a feature of the sporting events to be held during the Panama-Pacific International Exposition at San Francisco in 1915.

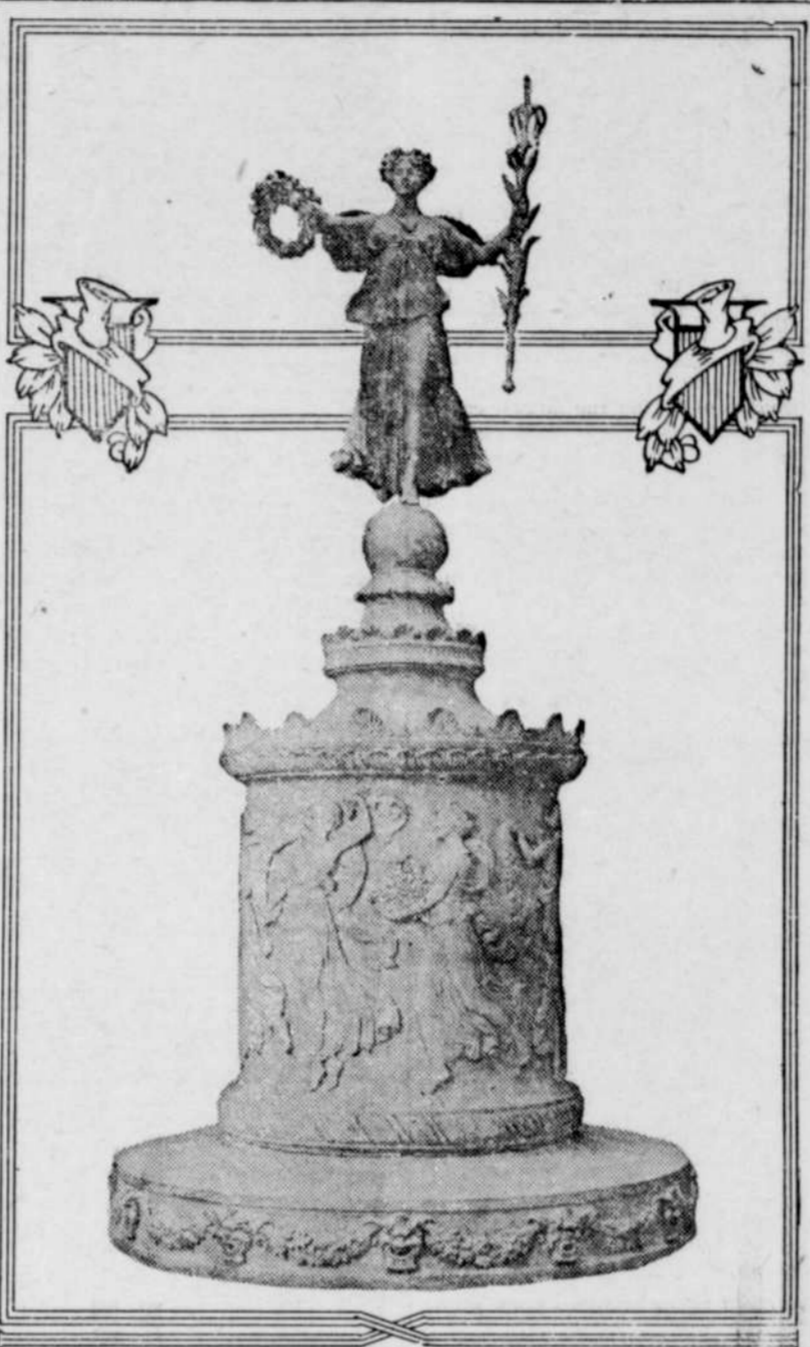
The race will start from the grounds of the Exposition in May, 1915, and will end there. Three hundred thousand dollars has been hung up in prizes for this stupendous world girdling contest. A number of the world's greatest aviators have signified their intention of entering the races. The recent flight of Stoeffler, ending at Mulhausen, Germany, in which he covered 1,375 miles, convinced aviators that long flights are a matter of adequate supply stations. The above photograph shows the route around the world and the various supply stations.



Copyright, 1913, by the Panama-Pacific International Exposition Co.

"SUNSHINE" AND "SPRING" AT THE PANAMA-PACIFIC INTERNATIONAL EXPOSITION, SAN FRANCISCO, 1915.

THE large group at the right is "Spring," by Furio Piccirilli, one of the groups in the Court of the Four Seasons at the Panama-Pacific International Exposition, San Francisco, 1915. At the left is "Sunshine," by A. Jaegers, who has created a companion statue, "Rain."

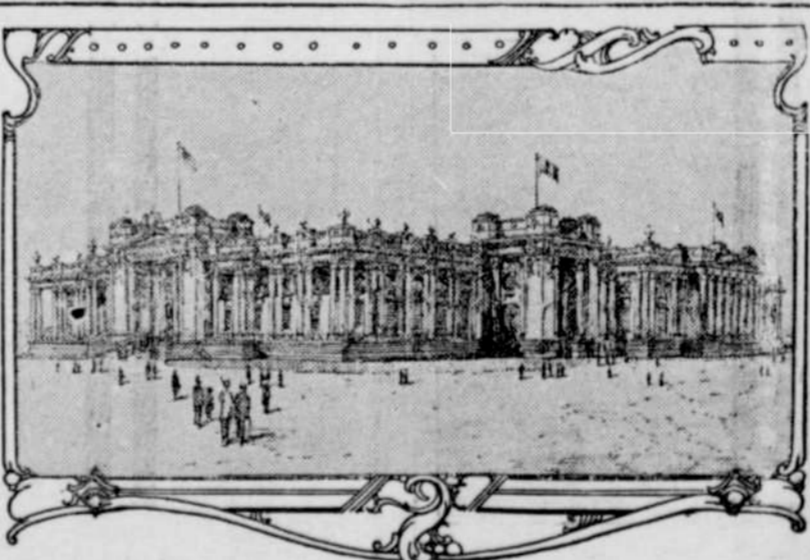


Copyright, 1913, by the Panama-Pacific International Exposition Co.

TREASURES OF THE WORLD AT THE GREAT PANAMA-PACIFIC INTERNATIONAL EXPOSITION IN SAN FRANCISCO IN 1915.

THE treasures of the world will be shown to millions of visitors at the great Panama-Pacific International Exposition in San Francisco in 1915. Thirty-four of the world's great nations have accepted the invitation of the United States, and their displays will be among the most elaborate ever shown at a world's exposition.

The artistic phases of the Exposition will be especially notable. The photograph above shows a superb work, "The Fountain of Ceres," by a famed woman sculptor, Miss Evelyn Bentrice Logan. The fountain, which will be twenty-six feet in height, will be placed in the entrance upon San Francisco harbor of the Court of the Four Seasons.



Copyright, 1914, by Panama-Pacific International Exposition Co.

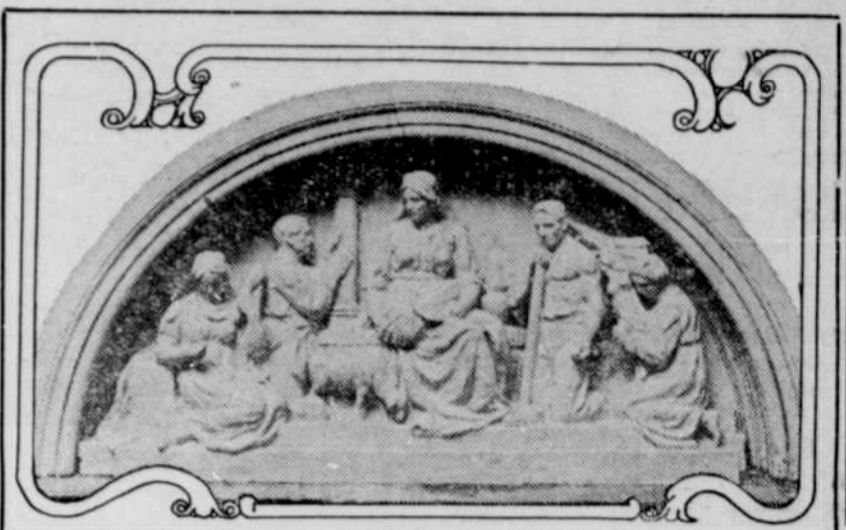
CANADA AT THE PANAMA-PACIFIC INTERNATIONAL EXPOSITION, SAN FRANCISCO, 1915.

PLANS for the Canadian building at the Panama-Pacific International Exposition at San Francisco in 1915 have been approved, and the work on the great structure has started.

The Canadian Palace, as it is officially named, will be one of the largest and most imposing of the foreign buildings, having a length of 340 feet, a width of 240 feet and a height of 50 feet, and will cost in the neighborhood of \$300,000. It will be the largest building ever erected by Canada at an international exposition, covering 65,000 square feet, and will house one of the most elaborate and comprehensive exhibits of the Dominion's resources and products ever shown on foreign soil. Six hundred thousand dollars has already been voted by the Canadian parliament for the building and exhibits, but a further grant, bringing the appropriation up to \$1,000,000, will be recommended.

HANDSOME BOOK ON PANAMA-PACIFIC INTERNATIONAL EXPOSITION AND PANAMA CANAL REGION MAILED TO ALL INQUIRERS FREE OF CHARGE.

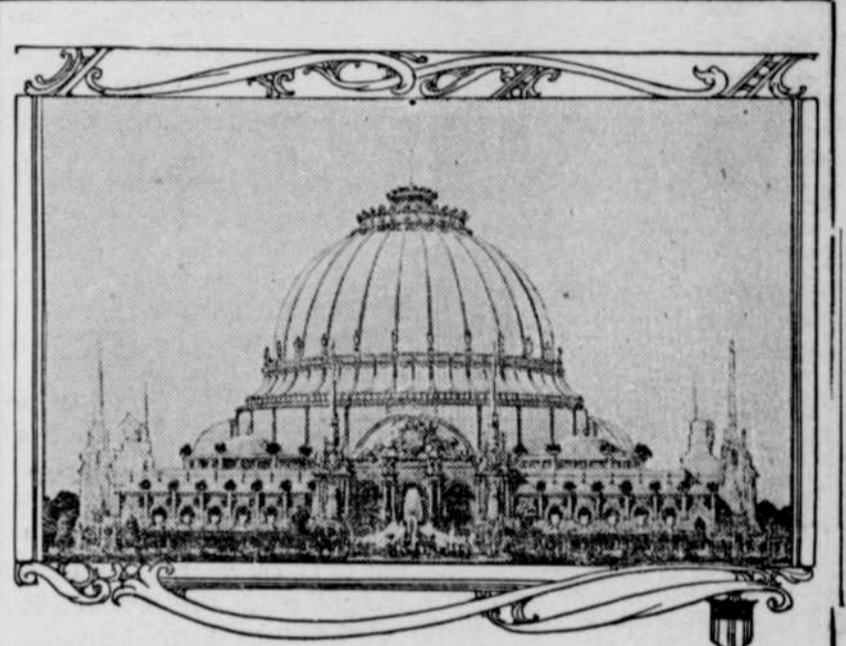
A HANDSOME book of sixty pages, illustrated profusely in colors and giving detailed descriptions of the Panama-Pacific International Exposition to be held in San Francisco from Feb. 20 until Dec. 4, 1915, and of the Panama canal and the canal region, will be mailed by the Panama-Pacific International Exposition free of charge to all inquirers. The booklet is intended as a general guide to prospective visitors and will also contain information concerning the great engineering feat which the Exposition is to celebrate. Write to the Manager, the Bureau of Publications, Panama-Pacific International Exposition, Exposition building, San Francisco, for the booklet.



Copyright, 1914, by Panama-Pacific International Exposition Co.

SUPERB FRIEZE FOR WONDERFUL EXHIBIT PALACE, PANAMA-PACIFIC INTERNATIONAL EXPOSITION, 1915.

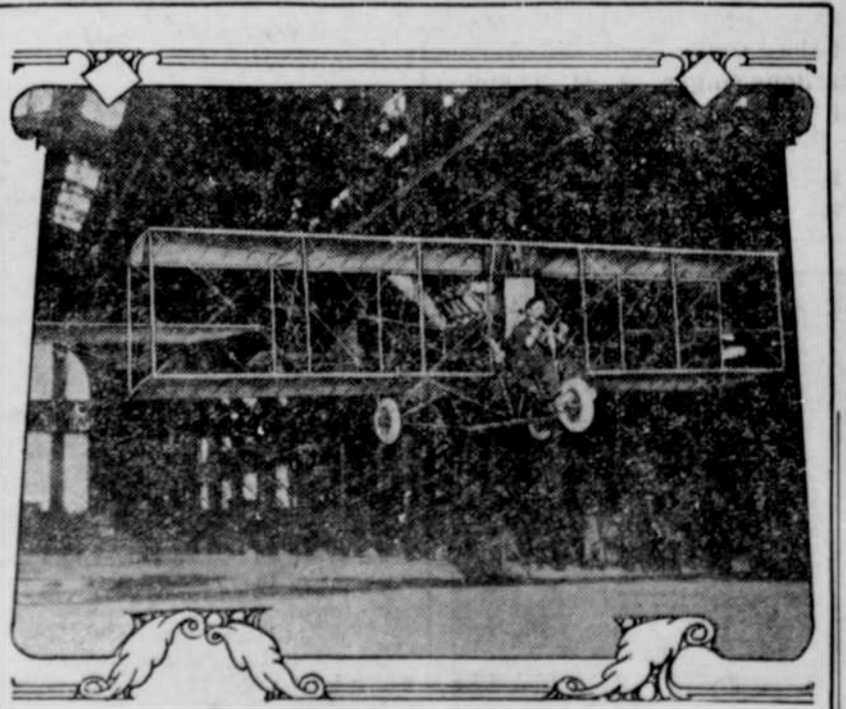
THE world will enjoy at San Francisco in 1915 the most marvelous collection of sculpture ever presented at a universal exposition. The photograph above shows an exquisite bas-relief representing the development of the industry, to be placed over the entrance of the colossal Palace of Varied Industries. The figures are of huge size. The work is by Ralph Stackpole, the brilliant American sculptor, and represents one of his finest creations.



Copyright, 1914, by Panama-Pacific International Exposition Co.

COLOSSAL GLASS DOME FOR PALACE OF HORTICULTURE AT WORLD'S GREATEST EXPOSITION.

THE photograph above shows the huge Palace of Horticulture at the Panama-Pacific International Exposition at San Francisco in 1915. The building will be constructed almost entirely of glass. The huge dome will be 180 feet in height and 152 feet in diameter. At night colored searchlights placed within the building will play upon the inside of the dome, giving it the appearance of a magnificent soap bubble, iridescent with all the colors of the rainbow. The building will cover five acres.



Copyright, 1914, by Panama-Pacific International Exposition Co.

THE WORLD'S FIRST INDOOR AEROPLANE FLIGHT, PANAMA-PACIFIC INTERNATIONAL EXPOSITION, 1915.

THE world's first indoor aeroplane flight was made by Lincoln Beachey, the American aviator, on the grounds of the Panama-Pacific International Exposition in San Francisco. Starting at one end of the Palace of Machinery, which is the largest wooden frame structure in the world, being almost 1,000 feet in length, Beachey attained a terrific momentum and rose into the air to a height of fifty feet, actually flying for a distance of 300 feet. At the opposite end of the building barriers of cloth were held by assistants to lessen the impact of the aeroplane. The machine, however, provided with a hundred horsepower engine, easily tore through the cloth, and the aviator received a severe shaking up. The difficulties of the flight were increased by the fact that the interior arrangement of the building consists of three longitudinal aisles each seventy-five feet in width, and Beachey flew down the center aisle, having to keep a straight course in order to prevent the aeroplane from striking the great columns of the aisle.