

If you Like
THE LEADER
Boost for it. If not,
Send your Criticism
to this Paper.

Cottage Grove Leader

Advertise in
THE LEADER
This is What Brings
Business and gives
the Paper Life.

PUBLISHED SEMI-WEEKLY

COTTAGE GROVE LEADER (Consolidated January 9, 1908)
BOHEMIA NUGGET

COTTAGE GROVE, OREGON, TUESDAY, AUGUST 3, 1909.

VOL. XXI. NO. 16

CLEARANCE SALE

Summer Goods at Half Price

Ladies' Tailored Waists		Ladies' Shirt Waists	
\$3.50 Pure Linen Waists	\$3.00	\$2.00 India Linen	\$1.75
3.00 " " "	2.50	1.75 " " "	1.50
2.50 " " "	2.00	1.50 " " "	1.25
2.00 " " "	1.50	1.40 " " "	1.20
		1.25 " " "	1.05

Ladies' White	12 1/2c Batiste, per yard	7c
...And...	15c " " "	8c
Colored Wash	20c " " "	10c
Skirts	12 1/2c Lawns, per yard	7c
From \$1.25	15c " " "	8c
To \$2.50	18c " " "	9c
10% Off	25c Highland Tissue, per yard	13c
	20c " " "	10c
	15c " " "	8c
	12 1/2c " " "	7c

SEE US FOR BARGAINS

HAMPTON & COMPANY

No Coupons With Goods Sold at Reduced Prices

BOOTH-KELLY TO BUILD RAILROAD

Klamath Falls, Ore., July 30.—A mammoth sawmill plant and 15 miles of railroad will be constructed by the Booth-Kelly Lumber company and their associates in the vicinity of Yamsay mountain, where the parties concerned have holdings of about 87,000 acres of timber.

Messrs. Booth and Kelly and Mr. Douher, of Detroit, Mich., the owners of this tract, returned from there yesterday. While the parties would admit nothing concerning this matter, it is known that while there they decided on the route for a branch railroad to the timber which will connect with the Natron branch at the lower end of the marsh.

A surveying party will be sent in shortly to locate this line. The company owns a splendid mill site near the terminus of this railroad, with sufficient water for all purposes.

At Lurch's

Special Friday and Saturday, 15c gingham at 11c.

CONTRACT LET FOR NATRON EXTENSION

Portland, August 2.—General Manager O'Brien of the Harriman lines in the Pacific northwest to-



HEAD CONSUL, I. I. BOAK, W. O. W.

day received information from San Francisco stating that the contract for the first 25 miles of the Natron-Klamath Falls extension of the Southern Pacific railroad had been let today to the Utah Construction company. The section contracted is from Natron southeast in Lane county.

A WONDERLAND IN OREGON

Government Takes Notice of Great Josephine County Caves.

Washington, July 30.—The president has just signed a proclamation making a National Monument of the Oregon Caves, "Marble Halls" of Josephine county, in Southern Oregon. These natural wonders are located in the Siskiyou National Forest about thirty miles south of Grant's Pass in Cave mountain.

The caves are in marble and limestones and consist of innumerable caverns, corridors and passageways of various sizes, all of them decorated beyond description in crystallized carbonates. They have been explored to a distance of two miles or more, the lowest of them being at a depth of about 2,000 feet below the summit of Cave Mountain, the highest being some seven or eight hundred feet above. There are many passageways and rooms which have never been opened, and with these distant and unexplored openings the magnitude of the Oregon Caves is practically unknown.

These natural wonders were discovered in 1874 by Elija Davidson, while bear hunting, and the greater part of the exploration work was done by F. M. Nickerson, of Kerby, Oregon, in 1877, when four floors of levels were partially opened. Many of the old ladders used at that time are still in use.

Cave Mountain, the peak which contains these caves, rises to an elevation of about 6,000 feet and is of limestone formation. The main openings around which the National Monument has been created are at an elevation of 4,000 feet, but the entire mountain-side for five or six miles shows caverns of various sizes and in all probability is honeycombed throughout its interior like the portion which has been explored.

Many small streams are found at different elevations, and larger bodies of running water can be heard in bottomless pits so far as measured. This running water probably accounts for currents of wind that in some of the galleries blow so hard as to extinguish an open light at once. The lime deposits take many beautiful forms; massive pillars, delicate stalactites of alabaster whiteness with the crystal drop of water carrying its minute deposit of lime from which they are formed, and broad sheets resembling drapery with graceful curves and waves that were certainly made by varying currents of wind during formation.

In past years visitors have broken off and carried away many of the most valuable specimens and this destruction, as well as to retain these natural wonders as public property, induced the recommendation to place them in a National Monument. The Forest service has rebuilt and improved the trails leading to the Caves from each side of the divide in order to more easily protect the valuable forest surrounding, and to make the caves accessible to tourists.

The little town of Elkton, Douglas county, is putting in a gravity system of water works.

BIG HARVEST PICNIC W.O.W.

Will be Held at Cottage Grove Saturday in the City Park

Saturday is the day set and extensively advertised as Woodman of the World day at Cottage, when a great harvest picnic will be held in the city park during the day and a big initiation and banquet will be pulled off in Woodman

Congressman W. C. Hawley.

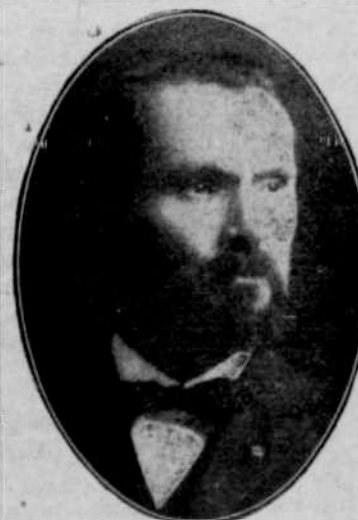


Head Manager, W. O. W.

hall in the evening. Among the distinguished visitors and speakers will be Head Consul I. I. Boak; Head Manager, Congressman W. C. Hawley; Head Manager, Hon. John Pattison; General Organizer, F. B. Tichenor; Special Organizer, J. P. Smith and many others. It is planned to make this the greatest fraternal occasion ever recorded in southwestern Oregon, and a large representation of the Lane and Douglas county camps is expected to be in attendance. A fine program will be carried out at the city park and a splendid basket dinner will be served, meat, bread, beans and coffee being supplied free by the Woodmen. It is hoped that their friends will bring along pastries and other dainties and join in the big feast.

SPORTS.

The afternoon sports will consist



Hon. John Pattison, Head Manager

of chopping and sawing contests, foot races for boys and girls, tug-of-war between teams of various camps, pillow fight, etc., for which suitable prizes will be given. All to close with a big parade in the evening. Everybody is invited to attend and enjoy the Woodman Harvest Picnic.

Look over the Leader's ads and then patronize Leader advertisers.

FRANK ELLIS SHOOTS HIMSELF WHILE EXPLORING BIG CAVES

Is Left Alone with His Wife to Die in the Dense Underground Darkness by His Cowardly Companions--Heroism of Wife.

Grants Pass, Or., Aug. 2.—Deserted by their companions when the tragic climax of their merry-making in the Josephine County caves came in the accidental shooting of Frank Ellis yesterday, he and his wife were left alone in the stygian blackness, he to die and she, grief-wheeled, to ease his agony as best she might.

All the lights but one carried by the party were taken by the cravens who ran away. The remaining torch soon went out.

Mr. Ellis and Arthur Vineyard, with their wives, two other women and several children were seeking passage through the caves and had succeeded in reaching the third chamber on the upper floor. Ellis being in advance of the party, and holding a pistol in his hand, attempted to climb to an upper cavity, but owing to the slippery walls he lost his footing and fell several feet, striking the revolver against the wall. The weapon was discharged, the ball entering his left eye and ranging upward through the brain, which resulted in death after four hours.

DESSERT AT CRY OF "MURDER." At the discharge of the weapon someone cried "murder," which precipitated a rush for the mouth of the cave. All fled except Mrs. Ellis, who, rushing to where her wounded husband lay, took his limp form upon her and tried to nurse him back to consciousness.

In the terrible darkness of the cavern Mrs. Ellis sat, fanning her husband with her hat, while the blood flowed freely from the dying man's face over the grief-stricken woman's hands and body.

Realizing she had been deserted, Mrs. Ellis made cry after cry for help but no answer came, save the echo of the caves. Thus she sat for four hours, nursing the dying man and hoping for aid. In her

desperate efforts to save his life she tore up her white underskirt and filled the wound with bits of rags to stop the ebbing life blood, until finally he died.

CRAWLS, SATURATED WITH BLOOD.

Exhausted and nearly overcome with grief, Mrs. Ellis began to crawl on her hands and knees over the slippery floor in an effort to find the guide string, which fortunately had not been broken in the retreat. This she fastened to a rock and laid it on her dead husband's body, with the intent, if she failed to reach the mouth of the cave, of returning there.

Then, with her clothes saturated with blood from the wounds of her husband, Mrs. Ellis started out and by fortunate circumstances finally reached a line of light and



F. B. Tichenor, General Organizer

the cave entrance, and thence walked over the precipitous mountain four miles away and summoned aid.

M. D. Ellis, father of the victim, arrived today from Dallas and will take charge of the body, which is expected to arrive here sometime this evening.

All kinds of sewing machines at best prices at Marion Veatch's. 5tf

WE ARE LEADERS

We Make Them All Go

When it Comes to Comfort

Quality and Style in

Suits, Hats and Shoes

WHEELER-THOMPSON CO.

WE HAVE IT FOR LESS

H. C. COOK

Successor to Pierce & Shepardson



YOU will find very attractive prices at my store. I offer Mason Fruit Jars as follows: Pints, 50c, quarts 70c and half gallon 90c per dozen. Also great bargains in shoes. For the present eighteen pounds best sugar for \$1.00 with an order for five dollars worth of goods from this store.

Farm Produce Wanted