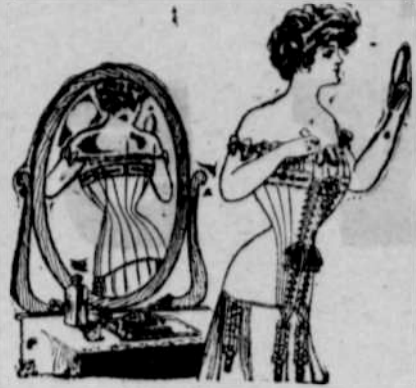


# HENDERSON Habit Back



## Corsets

"FRONT LACED"

THE front laced models are the culmination of the latest and best ideas in corset fashion. They remodel the figure, giving it a perfectly moulded back, giving it lines of grace and symmetry and the long, tapering curves which are so artistically beautiful. They reduce the full figure, giving it the flattened front and slender hip effects. They are absolutely hygienic and have the endorsement of the leading physicians and dressmakers. We call special attention to the model illustrated which is made in two lengths, high bust, for the tall figure, and medium bust, for the shorter waisted stout figure. This model is extremely long over the back and hips. The extra lacing in the back from the waist-line down permits an absolutely perfect adjustment over the back and assists further in keeping the hips in perfect subjection, thus giving the so-called hipless figure. We carry the front laced corsets in a varied line of materials at prices ranging from \$2.50 to \$12. We cordially invite the ladies of our city and vicinity to visit our corset department and inspect these most exquisite models. Consultation and fitting free.

**Rees-Wallace Co.**  
WHERE YOU DO BETTER

### Wireless Station Established at Cottage Grove.

Bulletin service daily. Nothing like being up-to-date. Watch the Bulletin board in front of our store. Tips on the FURNITURE MARKET. A special bargain every day. The bulletin tells it. Its up to you to watch the board and save yourself money. Genuine Wireless Bargains. An old time Operator in charge of this station, which guarantees quotations to be absolutely correct. Don't forget the time and place. At WALKER & KINGS, Every day.

### Epworthians Enjoy a Hay Ride.

The young people of the Epworth League enjoyed a hay ride to the pretty farm home of Mr. and Mrs. Ernest Sears near Saginaw Monday evening. Notwithstanding the exciting experience of a couple of breakdowns, and a mile walk to Saginaw, a grand old time was reported. The wide verandas of the Sears home was lighted with Japanese lanterns and strawberries and cream were served during the evening, the guests being royally entertained.

### Nesmith Too Much for Junction.

The game between the Nesmith ball team and the Junction team at that place Sunday resulted in a score of 14 to 2 in favor of the Nesmiths, which was another well earned victory. About 30 Cottage Grove people witnessed the game. The Nesmiths will play the county seat team at Eugene Sunday.

### Cement Work.

All kinds of cement work a specialty, satisfaction guaranteed. Apply to R. M. Gleason, or phone Main 213. 10-1f

### Lost Veil.

Tan chiffon veil, one yard and a quarter square. Finder please leave at Leader office.

### Everyone Boosting for Nesmith.

A former Cottage Grove citizen writing from Grants Pass says: "Please put me down on your list for the Leader. Can't possibly get along without hearing from the best town in Oregon, in Nesmith County, once in awhile. Things are rather quiet here now and looks like they will be for a time. Will do all I can to help Nesmith out and am doing some missionary work every little bit along this line. A prominent Josephine county man said to me today that he thought we would get it."

### Somebody Head Him Off.

Col. F. L. TouVelle the horticultural wizard of Tolo, is preparing to try a new stunt which he believes will eclipse his famous alfaberry, which he has produced by grafting the strawberry plant on a common alfalfa root.

The colonel has a fine patch of water melons coming on and as soon as the melons are well formed intends to start a runner from each fruit stem into a pint flask of whiskey and allow the melon to absorb the whiskey as it ripens. New whiskey can be used in the process as the ripening of the melon will also ripen and mellow the liquor and give it the fine flavor of 20-year-old goods in a few weeks time. He expects to find a market for his crop in Central Point, Ashland, Grants Pass, Cottage Grove and other "dry" towns in the valley at good prices.—Herald.

A. J. Armstrong, the photographer, went to Portland Sunday to spend the present week attending the Eastman Company's annual demonstrations in photography, given in the interests of photographers. He will come home with knowledge of the very latest in photography.

A full line of Columbia stock food and gall cure. Every box guaranteed at harness shop. C. BEALS & SON.

WANTED.—A girl to do general housework. Small family. Apply at Leader office.

## LOCAL AND PERSONAL.

It's Luck to Smoke Puck  
The better than 5c Cigar  
The Cigar in the Green Box.

Nesmith county 1910!

Buy sheet music at the Wave.

Send the Leader "back home."

Not many canned strawberries this year.

Boost for the big Fourth of July celebration.

Fine alfalfa near Springfield, worth \$16 a ton.

Good towns and good schools are never found far apart.

Look over the Leader's ads and then patronize Leader advertisers.

Miss Gertrude Burdick returned from Portland recently and is visiting with home folks.

Most married men will unhesitatingly approve these new gowns that button on the side.

Mr. and Mrs. Robert Sewerd, of Grants Pass, are visiting with their cousin, H. O. Thompson.

Mrs. Jas. Sears is in attendance at the pioneer re-union at Brownsville, her birthplace.

The business houses of this city have decided to close on Monday, July 5, from 11 a. m. till 4:30 p. m.

Friday and Saturday we will sell long silk gloves valued at \$1.25 for 98c, and \$1.50 values for \$1.29, at Lurch's.

T. C. Wheeler, Andrew Brund, Frank Wheeler and Oliver Veatch attended Shriener's meeting at Portland Saturday night.

Charles DeWald has sold his farm near Elkton, Douglas county, and contemplates buying and re-locating at Cottage Grove, his old home.

J. I. Jones was in attendance at the meeting of the board of trustees of the Willamette University at Salem last week of which board he is a member.

The Telephone Company has sent ten girl operators here from Portland, Manager Heaton not being able to secure as many here as he desired.—Eugene Guard.

Chas. Gates, who graduated from the Cottage Grove High school last year and who is a popular and very exemplary young man of this community, is seriously ill at Dr. Schlee's hospital in this city.

A. L. Woodard, the Latham saw mill man, is the first to purchase an automobile in this city, he having become the possessor of a nice little Ford runabout. He uses it in travelling from his home in this city to his saw mill at Latham, one mile south.

A marriage license was granted Monday afternoon to Joseph P. Wheeler and Miss Gertrude M. Emerson, both of Cottage Grove. Miss Emerson is a highly esteemed and popular teacher in the Royal Intermediate School, and Mr. Wheeler is a prominent and popular young man of that neighborhood. The Leader congratulates in advance.

The prolific growing qualities of Cottage Grove soil may be noted in many gardens in this city, and especially at the home of Attorney Medley, where on Sunday evening of last week he planted a bed to radish seed and on the following Friday, just four days, vigorous two-leaf plants were in evidence. Mr. Medley has proven himself proficient in gardening as well as in the practice of law.

Prof. A. L. Briggs has returned to his home in this city having completed his educational work in the Monmouth Normal School which will remain closed unless the people vote in favor of normal schools in the November 1910 election when the matter will be submitted to the legal voters. Prof. Briggs has been tendered the chair of mathematics in the Oregon Agricultural College and will probably accept the position.

Friday and Saturday we will sell long silk gloves valued at \$1.25 for 98 cents and \$1.50 values for \$1.29 at Lurch's.

Ed Jenks has sold his corner lot on Main street at the depot to J. F. Spray.

Mining location notices and legal blanks of all kinds for sale at this office.

J. D. Cochran has sold his business house and lot on Main street occupied by J. B. Lewis, to C. C. Hazleton.

Friday and Saturday we will sell long silk gloves valued at \$1.25 for 98c, and \$1.50 values for \$1.29, at Lurch's.

Mrs. Lillie Kreuger and Mrs. Celia McCreddie, the former of Butte, Montana, and the latter of San Francisco, Calif., are guests of their parents, Mr. and Mrs. B. Lurch.

The log drive of 2,500,000 feet for the Eugene Lumber Company, is coming down the river in good shape, having reached a point opposite the mouth of Fall creek. The drive started from a point above the North Fork.—Guard.

C. Vandenburg, deputy assessor for Cottage Grove and vicinity, came in with his books and papers Monday having finished up his work for the year. This leaves only two more assessors still out, who have not finished their work.—Register.

The Leader stated recently that the south side of the block between Third and Fourth streets would be the first to have a solid concrete sidewalk facing on Main street. Guess we will have to take it back as the block between Fourth and Fifth street is a full neck ahead with a similar improvement.

See Wheeler-Thompson Co's. new ad in this issue.

A large delegation of Eugene Elks visited Cottage Grove Sunday afternoon for the purpose of paying a visit to two of their sick brothers, Wm. Ostrander, the O. & S. E. engineer who was injured in the recent wreck, and F. H. Hall. A meeting was held during the afternoon with the Cottage Grove members of the local lodge and a very enjoyable time was spent.

Watch for Walker & King's bulletin board special sale each day.

The second kiln of 200,000 brick at the yards of E. A. Gleason in west Cottage Grove is nearing completion, the first kiln being nearly burned now. A third kiln the same size will be burned before the close of the season and will be first-class. Mr. Atkinson sold his interest in this brick yard to his partner, Mr. Gleason last fall.

Buy your harness where you get your moneys worth. C. BEALS & SON.

The Sunset representative, Mr. Dascent, is here for the purpose of obtaining information regarding this section of the country which will enable him to compile a comprehensive article on our resources and advantages for his magazine as per his contract with the Commercial Club promotion committee. Any information given to him by the farmers, miners, timber and lumbermen will be fully appreciated. He may be seen at the Commercial Club rooms.

The Pride Home Bakery will be closed hereafter on Sunday from 1 until 4 o'clock p. m.

The Beidler Brothers, thoroughly practical and up-to-date farmers, will not secure the Harding farm near this city for another three-year term, when their first term expires in October, the raise in the rental from \$800 to \$1000 per year being considered too high by them. They will find little trouble in securing another place as their reputation for practical farming and keeping up a place in good shape is so well-known. They are already offered a good proposition near Oakland, but will look around a little before leasing another place. It is understood that Will Keen, Mrs. Harding's brother will take charge of her farm here at the expiration of Beidler Brothers lease. Mr. Keen was raised on a big French prairie farm north of Salem and should be able to manage his sister's farm here successfully.

Phone 1621

# FARMERS FEED Take Notice! FLOUR Poultry Supplies

**We pay Cash for**  
EGGS, POULTRY, VEAL,  
MOHAIR, WOOL and GRAIN

**We can supply you with**  
LIME, CEMENT, and all kinds  
of HARDWARE, TINWARE,  
GRANITEWARE, STOVES &  
RANGES  
WAGONS, BUGGIES, FARM IMPLEMENTS

Look over our stock and get our prices before buying. NEW SPRAY BUILDING NEAR DEPOT

## Spray-Wynne Co.

REPORT OF THE CONDITION OF THE

## First National Bank

OF COTTAGE GROVE

As submitted to the government, April 28, in condensed form. Examine and compare it with other bank statements of condition.

Loans, bonds, city and county warrants . . .	\$151,463.23	Capital and surplus . . . . .	\$ 30,000.00
Real estate, fixtures . . .	12,225.00	Profits . . . . .	14,138.63
Cash . . . . .	118,954.93	Circulation . . . . .	12,300.00
		Deposits . . . . .	226,304.53
	\$282,643.16		\$282,643.16

**WE HAVE OVER 52% AVAILABLE CASH**  
**IF YOU WANT SAFETY AND SERVICE WE SOLICIT YOUR BUSINESS**

## THE OLD RELIABLE

# Spring Season

Q Our Spring Season has opened most satisfactorily. New orders are coming in and we are filling them in a manner satisfactory to our trade.

Q We intend keeping our stock complete throughout the Season, and will endeavor to carry lines adapted to the trade.

**SEND US YOUR ORDERS FOR GOODS  
IN OUR LINE AND WE DO THE REST**

## JOHNSON & MATLOCK

GENERAL MERCHANDISE

# SUMMER RATES EAST

During the Season 1909  
via the

## Southern Pacific Co.

from

### COTTAGE GROVE

**To OMAHA and Return - - - \$64.40**  
**To KANSAS CITY and Return - 64.40**  
**To ST. LOUIS and return - - 71.90**  
**To CHICAGO and Return - - 76.90**

and to other principal cities in the East, Middle West and South.  
Correspondingly low fares.

On Sale June 2, 3; July 2, 3; August 11, 12

**To DENVER and Return - - - 59.40**  
On Sale May 17, July 1, August 11

Going transit limit 10 days from date of sale, final return limit Oct. 31.  
These tickets presents some very attractive features in the way of stopover privileges, and choice of routes; thereby enabling passengers to make side trips to many interesting points enroute.  
Routing on the return trip through California may be had at a slight advance over the rates quoted.  
Full particulars, sleeping car reservations and tickets will be furnished by any Southern Pacific local agent, or  
WM. McMURRAY, General Passenger Agent, Portland, Ore.

Give the LEADER a Trial.

## Look Look Look

We are prepared to fit out your house in first-class shape. We carry everything in Furniture, Carpets, Mattings, Linoleum, Rugs, Pillows, Blankets. In fact

### Everything For The House

We are the house with the goods. Don't fail to see us when you are looking for the best. We lead them all.

## WALKER & KING

COTTAGE GROVE, OREGON