

If you like THE LEADER Boost for it. If not, Send your Criticism to this Paper.

Cottage Grove Leader

PUBLISHED SEMI-WEEKLY

Advertisement THE LEADER This is What Brings Business and gives the Paper Life.

COTTAGE GROVE LEADER BONEHIMA NUGGET Consolidated January 9, 1908.

COTTAGE GROVE, OREGON, TUESDAY, APRIL 13, 1909.

VOL. XX. NO. 52



10% OFF

For one week, commencing Saturday the 10th, we will give 10 per cent off on our entire line of

Men and Boy's Suits

giving everyone an opportunity to purchase a Spring Suit at a low price. We have correct styles in all sizes from \$12.50 to \$25.00 regular in

Men's Suits and from \$2.00 to \$8.00 in Boy's Suits.

The purpose of this reduction is not to sell a lot of out-of-date stock, for our suits are new and up-to-date, but to more thoroughly establish the already known fact that our clothing line is unquestioned in quality, tailoring and price.

Our methods of conducting business is not along lines of "flashy sales" or advertising to sell below cost. We will truthfully represent our goods both in the store and in our advertising, doing unto others as we would be done by.

HAMPTON & CO.

Where Cash Beats Credit.

NOTED BLIND PIGGER WILL LEAVE EUGENE

Friday's Eugene Guard said: Joe Jacobs who has been a thorn in the side of the local optionists and authorities of this city for some time past, will soon cease to be reckoned as a citizen. Joe was yesterday released from durance vile, where he has been sojourning at the request of the circuit judge for the past several months, also being assessed in the sum of \$500 each on two indictments for selling "booze" against the peace and dignity of the State of Oregon. Joe has served out time equivalent to the sum of \$400 and yesterday dug down in his jeans and produced the further sum of \$600 upon the payment of which Sheriff Harry Bown threw Joe out upon the tender mercies of a foreign community, for the derelict was told that new climes and new scenery would be best for his health and that Eugene could get along very well without his presence within her borders. Joe took the hint and today is packing up his belongings and will tie himself and family to the state of Washington, where he will have freer range for his peculiar talents.

COUNTY COURT MAKES HIGH SCHOOL ORDER

The county court has made the order granting scholars who have passed the eighth grade examination the privilege of entering the nearest high school in their district under the county high school law. It is not known definitely whether they can enter any high school in the county or not. If they can the Eugene high school will be the loser as by the terms of the law passed at the last session of the legislature the high school which they attend is allowed \$40 per year on daily averages for the first ten, \$35 for the second ten, and only \$12 for all over that number. It is a good thing for the small high schools who will not have more than 20 of these non-resident pupils, but if there is a larger number that have to be taken at the \$12 rate, it will be a losing proposition as it costs much more per capita to educate them.—Register.

Klamath Falls is happy. Within 20 days trains will be running through the city and a fund of \$5000 has been raised through which to celebrate in honor of the event.

Cash Paid for Wool and Mohair

There is great satisfaction in knowing that when you buy

GROCERIES

You are getting New, Fresh Stock of the best standard brands.

IN SHOES

We can fit any foot and give you Style, comfort and durability.

Cottage Grove Mercantile Co.

Phone Main 643—Our own Delivery.

COTTAGE GROVE RAISES A \$5,000 PROMOTION OR "BOOSTER" FUND

Cottage Grove has contracted a complicated case of "Boosteritis," and the contagion is rapidly spreading throughout the community, the farmers, millmen and miners not even being immune. As a result of this epidemic, the boss boosters are getting busy and are signing up our public spirited bankers, merchants, farmers, miners and lumbermen in sums all the way from \$5 to \$25 per month for one year in order to produce a \$5,000 promotion fund to be used in exploiting Cottage Grove and "Nesmith county's" resources, and advantages open to homeseekers and investors. In one day, Monday, C. E. Stewart, a member of the soliciting committee received a pledge of \$1,500 and J. F. Spray another member of the committee of five, received subscriptions in the sum of \$1,800 on the same day. There

fore it is evident that the \$5,000 booster fund will be available long before the close of the present week, which makes the fact more apparent than ever that Cottage Grove, "Nesmith County," will be heard from during the present year, and will take a place along with the other prominent, progressive and enterprising towns and communities of the state, so far as publicity is concerned. It is planned to make Cottage Grove so well known to the people throughout the state that they will no longer need to refer to the map to determine its location. Boost the boosters, and keep Cottage Grove's resources and advantages before the public, thereby making more assured of success, the creation of Nesmith county in 1910. Boost and the world boosts with you, knock and you're all alone.

JUNCTION MAYOR OUSTED BY RECALL

Junction, April 9.—At the special city election held here today for the purpose of invoking the recall on Mayor C. P. Houston, Francis Saylor, the candidate chosen to succeed the present incumbent, won out by a large majority, the vote standing as follows: Francis Saylor, 74.

C. P. Houston, 22. Among the allegations urged by the citizens at their mass meeting held here on Tuesday evening, March 23d., were that "his moral character and reputation for truth and veracity were bad," that he "exercised the duties of his office in an arbitrary manner without due regard or consideration of the rights of the council or the interests of the people of Junction City."

This fully demonstrates the fact that no Oregon town need any longer tolerate an incompetent, immoral, or arrogant mayor. The day of the one man town in Oregon has passed.

HENRY LONG WAS A PIONEER OF 1852

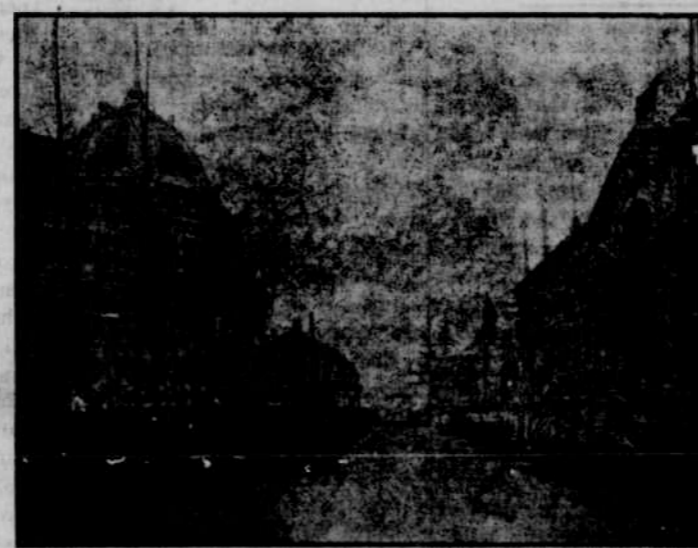
The additional facts are learned concerning the life of Henry Long who suicided at this place last week.

Mr. Long was a pioneer of '52. His parents started across the plains to Oregon with a train, but his father took cholera and died where the roads separated for California and Oregon. His mother, in doctoring a sick horse, took a severe cold, resulting in her sudden death, leaving four small children, the youngest only three weeks old. A Mr. Ward took the baby and another family the eldest boy, but the two other little boys were left by the camp fire to starve. After three days' travel the train met James Howard, then of Eugene, and on learning of the two deserted children he started in search of them, finding them almost starved, gnawing some hard biscuits. He carried them on horseback to the train and on to Oregon. Mr. Howard himself raised Henry and Charles was taken into the family of Elijah Mays of Eugene.

Ornamental Shrubbery.

Lilies, lilacs (budded, new shades) climatis, (the finest) roses, evergreens and a long list of ornamentals on hand as well as a fine lot of fruit trees and small fruits. Get our prices, ask us for anything in our line from a "puckery persimmon to a perfect peach." Cedar Springs Nursery, Phone 471.

City clean-up day Friday.



LOOKING DOWN YUKON AVENUE.

One of the most traveled highways of the Alaska-Yukon-Pacific Exposition will be the street which has been given the name of Yukon Avenue. Yukon Avenue makes its way across the exposition grounds from west to east, and the ends are represented by Klondike Circle near the entrance, and Nome Circle on which fronts the classic Forestry building. It crosses the roaring Cascades on oriental bridges of handsome design, and from its central part the buildings of Hawaii and Alaska, backed by the enormous federal structure, are directly to the north.

Just to the west of Klondike Circle the Pay Streak winds in a general direction from north to south, and at the eastern end the land gives way precipitously to the shores of Lake Washington. It is on this beautiful shore of the lake the natural amphitheatre is located, and nature has so quaintly formed this delightful spot, that small effort has been required of man to transform it into as perfect an exhibition place as is possible. Its curving, sloping sides complete a semi-circle, and from its tiers of towering seats 30,000 spectators may witness the entertainments with no possibilities of occupying a single undesirable seat.

A wonderful variety of architectural display is shown by the many buildings through which Yukon Avenue passes, and during its course the visitor passes from man-made monuments through parts of magnificent forests whose grandeur has never been marred by the destructive craft of Mammon's disciples. From every side the line of horizon is defined by mountains whose lines are delineated in perpetual snow, and stretching away as far as the eye can travel rest the waters of Puget Sound.

SPRAY-WYNNE CO. IN NEW QUARTERS.

On Monday of this week the big stock of the Wynne Hardware Co. was moved into its new quarters in the Spray brick near the depot where the two companies will effect a merger, in fact have already incorporated under the firm name of Spray-Wynne Co. for the purpose of conducting a general hardware, farm implement, feed and commission business. They have large new commodious quarters in this new brick and will be better prepared than ever before to take care of the wants of their numerous customers. This is now the largest business establishment in Cottage Grove, and has some very genial, enterprising and public spirited gentlemen at its head.

For Sale.

1000 shares of Comstock Golden Gate at 30 cents a share worth \$1 a share, or 2000 shares Alaska Petroleum or coal stock at 25 cents, account of financial difficulties. Will sell all or part.

W. W. WHITE, 549 Wash. St. Portland, Or.

JUNCTION CITY TIMES ON NESMITH

Editor Moorehead of the Junction City Times, makes the following frank statement concerning the creation of Nesmith county by popular vote in 1910:

"A good deal of surprise was expressed when the Times stated that the creation of the county of Nesmith would be ratified by the people under the referendum law. Now comes the Oregonian and says it will support the measure. We learn by inquiry that a good many in this part of the county will favor the measure, while others are indifferent as to the outcome. We would regret to see the county divided and we would also regret to lose Cottage Grove and her good people, but at the same time, they can present an argument that will be pretty hard to overcome and arguments that will appeal to the voters at large."

A 3,000 ACRE LAND TRACT TO BE SET TO WALNUTS IN THE LORANE VALLEY

One of the largest real estate transactions ever consummated in south Lane county will be closed at Lorane, 12 miles west of Cottage Grove, today, in the transfer of 3000 acres of the fertile Lorane valley land to the Churchill-Matthews Co. incorporated, the most extensive planters of walnut orchards in Oregon, whose headquarters are at Portland. A. C. Churchill, accompanied by Messrs Rodman & Stewart, the Eugene agents for this tract of land, left Cottage Grove this morning by private conveyance, to arrange for the transfer of this great tract of land to the aforesaid company. It is the intention of this company

to set the entire tract to English walnuts, the land and location being ideal for a nut orchard. It is also stated that this company will inaugurate a movement at an early date, looking toward the permanent improvement of the Lorane-Cottage Grove wagon road, \$5,000 to be expended in material and work the first year. This is a very wealthy company and its great investment and industrial enterprise in South Lane is particularly fortunate for this section of our county. The big enterprise is sure to prove a great success and a great promoter of more and better nut and fruit orchards in South Lane county.

WILL PIPE LONDON MINERAL WATER TO COTTAGE GROVE.

Eugene April 10—The Callipooia Springs Co. was organized here yesterday to improve the London Springs summer resort, and to put the water and mineral salts upon the market. The capitalization of the company is \$150,000 with share valued at \$10 each. The articles of incorporation were filed today with the county clerk and secretary of state.

The directors are Levi Geer, Dr. Geo. Wall, Dr. Philip Bartle, Darwin Bristow and W. B. Dennis. The officers of the board are W. B. Dennis, president; Darwin Bristow, treasurer; and L. E. Bean, secretary. The law offices of Williams and Bean will be the temporary headquarters of the company, and Eugene is named as the principal place of business.

The new company will immediately purchase the property of the London Springs association, which comprises the hotel, 16 acres of ground and the baths and the springs. These will be improved and made beautiful.

It is contemplated that the large bottling plant will be built at Cottage Grove. The water will be run through a pipe line to Cottage Grove and that town will be the main shipping point.

MORE ADVERTISEMENT.

Arrangements have been made with the Southern Pacific Company to advertise the springs in their folders. The company will also ask the railroad for freight rates, which will enable them to

extend the market of the water as far east as Chicago.

One of the prominent features of the business will be manufacture of salts from the water. An evaporating plant will be constructed at the springs. The salts will be marketed all over the world, for they are of particular value in kidney and liver diseases.

The industry promises to assume large proportions and to bring thousands of dollars into Lane county directly, as well as stimulating a large tourist traffic. To meet the demands of the public, who visit the springs, the hotel will be rebuilt and enlarged. The grounds will be parked and turned into walks and playgrounds for children. The object is to turn the resort into a high class establishment similar to the California watering places.

WILL HOUSTON BADLY INJURED

Will Houston, who resides at Dorona, was severely injured last Thursday while engaged in clearing land. He was using a block and chain in pulling stumps when the chain broke and struck him on the knee severely cutting and bruising his leg. Dr. Schief was called and dressed the wound and on Monday he had his patient brought to his hospital in this city that his injury might be given more careful attention. Mrs. Houston accompanied her husband to the hospital here.

We Have it for Less

—AND— Will Sell it for Less

It will pay you to investigate our line of

Men and Boy's Fine Clothing

Men's All Wool Fine Suits, \$10.00 to \$25.00
Boy's New Buster Brown Suits, 4.00 to 5.00
Boy's New Combination Suits, 4.00 to 5.00
Boy's Extra Quality 2-piece Suits, 5.00 to 7.50

WHEELER-THOMPSON CO.