

**Lodge Directory.**

**A. F. & A. M.**

Cottage Grove Lodge No. 51.  
Meetings 1st and 3rd Wednesdays  
of each month.  
Oliver Veatch, W. M.  
L. F. Wooley, Secy.

**G. A. R.**

Appomatax Post No. 34.  
Meets at 1 p. m. on the 2nd and  
4th Saturday of each month.  
Dr. D. L. Woods, Post Com.  
G. W. McReynolds, Adjutant

**W. O. W.**

Bohemia Camp No. 260.  
Meets each Friday evening.  
L. W. Baker, Consul Com.  
Chas. VanDenburg, Clerk.

**O. E. S.**

Cottage Grove Chapter No. 4.  
Meetings held on 2nd and 4th Fri-  
day of each month.  
Mrs. Rosenberg, W. M.  
T. C. Wheeler, W. P.  
Mrs. Maud Wheeler, Secy.

**K. of P.**

Juventus Lodge No. 48.  
Meets every Wednesday night.  
S. R. Piper Chancellor Com.  
Chas. VanDenburg, K. of R. & S.

**I. O. O. F.**

Cottage Grove No. 68.  
Meetings every Saturday night.  
S. S. Shortridge, N. G.  
Gus D. Gross, Secy.

**Royal Neighbors.**

Meets 2nd and 4th Wednesday of  
each month.  
Ethel Bisby, Oracle.  
Mrs. W. Wallace, Recorder.

**M. W. of A.**

Meetings 1st and 2nd Tuesday.  
LeRoy Woods, Consul.  
C. W. Wallace, Secy.

**Rebekahs**

Cottage Grove No. 24.  
Meetings 1st, 3rd and 5th Friday of  
each month.  
Etta Baker, N. G.  
Katie B. Veatch, Secy.

**M B A**

Modern Brotherhood of America  
Meets 2nd and 4th Tuesday at I. O.  
O. F. Hall.  
T. W. Jenkins, Sec.

**W. O. W.**

St. Valentine Circle 121.  
Meets 1st and 3rd Tuesday in W.  
O. W. Hall.  
Flora J. Miller, Clerk.

**L. O. T. M.**

Lady Lamsda Hive No. 42.  
Meets 2nd and 4th Friday of each  
month.  
Mrs. Mary Schmutz, L. C.  
Miss Leta Sanford, K. K.

**K. O. T. M.**

Cascade No. 66.  
Meets every Thursday night.  
O. H. Veatch, Com.  
R. K. Bennis, Cooter.

**ECZEMA and PILE CURE**

**FREE** Knowing what it was to  
suffer, I will give FREE OF  
CHARGE, to any afflicted a positive  
cure for Eczema, Salt Rheum, Erysip-  
elas, Piles and Skin Diseases. In-  
stant relief. Don't suffer longer.  
Write F. W. WILLIAMS, 400 Manhat-  
tan Avenue, N. Y. Enclose stamp.

209.

Keep bright and you'll be kept  
busy.  
Light is the magnet that draws  
trade.  
A show window brilliantly  
lighted with electric lights makes  
many a sale "the night before."  
It attracts attention,  
makes it easy for your display to be  
examined, and shows your goods to  
the best advantage.  
Electric light is the best and  
only illuminant.  
When may our man see you  
about it?  
WILLIAMETTE VALLEY ELECTRIC  
CO.  
The Leader tells the news.



**TOBACCO BREEDING.**

Scientific Method of Obtaining Uni-  
formity of Strain.

Visitors to the United States depart-  
ment of agriculture station in Connecti-  
cut last season were struck with the  
marvelous results obtained in breeding  
for uniformity of strains. The work is  
to be further carried on. The above  
illustrates a choice plant with the seed  
pod bagged. Seed saved under bag in  
this manner is larger, heavier and less



CHOICE TOBACCO PLANT.

susceptible to disease than when saved  
in the ordinary manner. The main  
value of the process is to prevent ac-  
cidental cross fertilization between  
poor and good plants through the ag-  
ency of bees and other insects. Results  
are so far noted in New England  
Homestead.

**Peach Growing in New Jersey.**

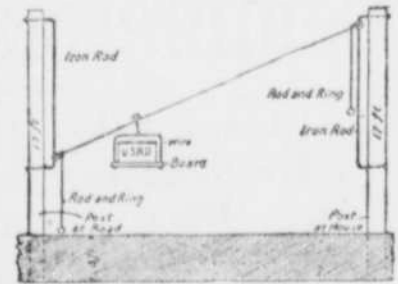
I do not believe there is a section in  
south Jersey that would not grow  
peaches, but ordinarily good, loamy  
soils are capable of producing a large  
tree, with the capacity for giving a  
large quantity of first class fruit. This  
character of soil makes handsome re-  
turns. While our deep sandy soils—  
the soil that is of little value for the  
staple crops—will produce fruit, in  
smaller quantities to be sure, of the  
highest eating and selling qualities—  
fruit that will compare favorably in  
size, flavor and color with any moun-  
tain fruit—I wish to emphasize the  
fact that these sandy, semibarren  
tracts of south Jersey sand can be  
turned into profitable investments  
through the agency of the peach. If  
the trees are sufficiently fed, the nat-  
ural deficiency of plant food being  
furnished, the results are most gratifying.  
—Joseph Barton.

**Must Depend on Farmers.**

We must depend on the farmer who  
will raise at least a few horses each  
year in connection with other lines of  
live stock production and grain grow-  
ing for our supply of horses. The small  
farmer who does not have land  
enough to keep mares for breeding pur-  
poses exclusively should aim to use  
mares for work purposes and breed  
them. This will cause some inconve-  
nience in getting the farm work done,  
but more healthy, normal colts are  
produced in this way than when the mares  
are allowed to run idle. If the mares  
are worked they will not suffer from  
lack of exercise, and the foal is more  
apt to be grown properly the first sum-  
mer.

**Farm Mail Delivery.**

The engraving shows a travelling  
mail box plan that, according to a  
writer in the Ohio Farmer, can be  
operated at any distance, from a few  
rods to 130 rods. The greater the dis-  
tance the coarser the wire must be and  
the tighter it must be stretched. No. 9  
wire will serve for 130 rods. The two  
posts must be well braced, so that the



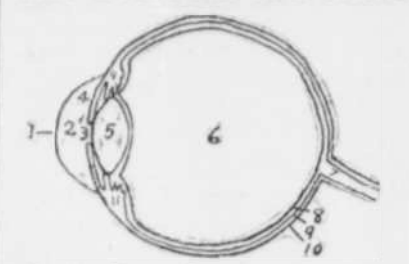
TRAVELING MAIL BOX.

tops will not be drawn together and  
the wire allowed to sag. Whenever  
the wire loosens the brace must be  
tightened. If the distance traveled is  
short and no loads are to pass under  
the wire the posts need not be so high.  
After the mail man has put the mail  
into the box he pushes that end up  
by means of the iron rod. The side at  
the house having been lowered, there  
will be enough fall to make the box  
travel rapidly.

**Good Fairs.**

With the good crops, good season and  
good demand for live stock and farm  
products generally, it is no wonder  
that the fairs throughout the country  
are having the most successful exhibi-  
tions in many years. The state fairs  
which have been held so far have been  
record breakers in every way, and the  
smaller fairs reported have all been  
successful. It is gratifying to know  
this, as fairs are the product of the ag-  
ricultural classes, and they show that  
when the farmers have favorable con-  
ditions they can do things as well as  
any other class of business men.—Na-  
tional Stockman and Farmer.

**THE EYE AND ITS CARE**



By Dr. Franc Lucile Hard, Rooms  
1-4 Chrisman Building, Eugene.

1—Cornea 6—Vitrious Humor  
2—Aqueous Humor 7—Optic Nerve  
3—Pupil 8—Retina  
4—Iris 9—Choroid  
5—Crystalline lens 10—Sclerotic

Last week the eyebrows, eyelids,  
eyelashes and muscles of the eye  
were described. Now the eyeball  
and its contents are to be consid-  
ered.

On inspection of the eye the first  
thing noticed is a curved, transpa-  
rent surface called the Cornea. The  
Cornea is about one thirty-second  
of an inch thick in the center and  
slightly more than that at the edges.  
It is composed of many fibrous  
layers of tissues and is closely  
matted by a network of invisible  
nerves, which accounts for the in-  
tense pain suffered upon getting  
any foreign substance into the eye.  
Just back of the Cornea is a tiny  
space known as the Anterior Cham-  
ber and filled with a watery fluid  
called the Aqueous Humor. This  
contains a little albumen and some  
salts, but is mostly water.

Next in succession comes the  
Iris (or rainbow of the eye). This  
is the dark part of the eye which  
we see. Its color as we all know  
varies in individuals, brown and  
blue being the most common. The  
Iris is a delicate little curtain separ-  
ating the anterior from the pos-  
terior chamber. In the center is,  
what appears to us, as a black spot,  
that in reality is a circular hole  
through which the rays of light  
pass on their way to the Retina (of  
this more will be given later). This  
hole, the pupil, regulates the  
amount of light which reaches the  
Retina, by expanding when in a  
dim illumination, and contracting  
upon going into a bright light.  
This is caused by two sets of fibers  
in the Iris. One, of radiating fibers  
which act in enlarging the pupil  
and the other of circular fibers  
which act in closing the pupil like  
a draw string. Thus allowing only  
as much light as is necessary to en-  
ter the eye.

Next week the Crystalline Lens  
and Ciliary Muscles, or the focusing  
apparatus of the eye will be talked  
about.

**Lumber Notes.**

Mr. C. B. Sayre, a prominent  
lumberman of Portland who had the  
misfortune to be held here during  
the recent storm in conversation  
said "The general bend of opinion  
amongst the larger lumber manu-  
facturers throughout Oregon and  
parts of Washington seems to be  
toward a curtailment of the cut.  
The general prices of lumber are  
such as to make it an incentive to  
the manufacturer to produce as  
much as possible and in case an  
opening is made so as to allow the  
shipment of lumber in any quantity  
to California points this might pro-  
duce a slump in the prices a propo-  
sition the larger lumbermen hope  
to overcome by reducing the cut.  
This action will probably be taken  
up and acted upon at a meeting of  
the lumbermen soon.

Mr. H. D. Crites, manager of the  
Diastion Lumber company was in  
the Grove on business connected  
with his company the first part of  
the week.

Mr. Dale, a large pole and piling  
contractor of Northern California is  
in this field with a view of making  
it his headquarters.

Nearly all the mills in the vicin-  
ity of Cottage Grove closed down  
for the holidays but it is the expec-  
tation that they will all be running  
again by the 15th.

Clear up the complexion, cleanse  
the liver and tone the system. You  
can best do this by a dose or two of  
DeWitt's Little Pills. Safe, reliable  
little pills with a reputation. Re-  
commended by everyone know. Re-  
commended by Benson Pharmacy.

When the cold winds dry and crack  
the skin a box of salve can save  
much discomfort. In buying salve  
look for the name on the box to avoid  
any imitations and be sure you get  
the original DeWitt's Witch Hazel  
Salve. Sold by Benson's Pharmacy.

"They like the taste as well as  
apple sugar" is what one mother  
wrote of Kennedy's Laxative Cough  
Syrup. This modern cough syrup is  
absolutely free from any opiate or  
narcotic. Contains Honey and Tar.  
Conforms to the National Pure Food  
and drug law. Sold by Benson's  
Pharmacy.

Mothers who give their children  
Kennedy's Laxative Cough Syrup in-  
variably endorse it. Children like it  
because the taste is so pleasant. Con-  
tains honey and tar. It is the Original  
Laxative Cough Syrup and is un-  
rivalled for the relief of croup. Drives  
the cold out through the bowels.  
Conforms to the National Pure Food  
and drug law. Sold by Benson's  
Pharmacy.

**GRAZING FEES WILL BE COLLECTED ON RESERVES.**

Regulations Unmodified by Recent  
Decision of Federal Judge—Mis-  
apprehension Corrected.

A recent decision of a federal  
judge has been widely commented  
upon throughout the west on the sup-  
position that it declared illegal the  
regulation of grazing on forest re-  
serves and the system of charging  
for grazing permits. As a matter  
of fact, the decision, which was  
handed down by Judge Whitson,  
of the United States District Court  
for eastern Washington, in the case  
of the United States vs. Matthews,  
has no bearing whatever upon the  
legality of the grazing regulations or  
of grazing fees, which stand pre-  
cisely as before. The legal ques-  
tion involved was simply this: Does  
the law authorizing the Secre-  
tary of Agriculture to issue regu-  
lations make the breach of those  
regulations a crime?

Judge Whitson's decision merely  
answered this question "No." It  
was in substance that the objection  
to the indictment against Walter  
Matthews was the absence of a law  
defining the act therein charged as  
a criminal offense. Upon that  
ground the court held that the de-  
fendant must be sustained and the  
defendant discharged.

Though the point was simple and  
clear enough, it was entirely mis-  
construed in the press reports of  
the decision and in editorial com-  
ments upon it. For instance, in  
the Wyoming Tribune of Tuesday,  
November 6, news of Judge Whit-  
son's action was given under the  
headline: "Grazing Fees Illegal  
Decides Federal Judge," and the  
article declares that "As a result of  
the decision, Matthews, who en-  
tered the Mount Rainier Forest Re-  
serve without the permit required  
by the Sec. is still using the reserve  
and is not paying the fee imposed  
by the Secretary." As a matter of  
fact, Mr. Matthews' sheep were im-  
mediately removed upon notice by  
the forest officers and have not  
since entered the reserve.

In the Sheridan, Wyo. Post it is  
said: "A decision fraught with  
importance to Wyoming stockmen  
is that appearing in this issue,  
wherein it is held by the United  
States District court that the col-  
lection of fees for grazing livestock is  
illegal. \* \* \* Since its imposition  
this fee has been regarded as illegal  
and arbitrary by many well-in-  
formed Wyoming people, and the  
views expressed by the court in  
this decision meet with general ap-  
proval here \* \* \* The litigant is  
still running his sheep on the  
Rainier Reserve without paying the  
fees."

Decisions like Judge Whitson's  
had before been made by the fed-  
eral courts in three other districts,  
one of them six years ago, but none  
of these interfered in the slightest  
with the right of the United States  
to institute civil action against tres-  
passers violating the grazing regu-  
lations, or with charging the graz-  
ing fee. The United States Circuit  
Court of Appeals for the Ninth  
Circuit decided definitely, in the  
case of Dastervignes vs. United  
States, that the provisions of the  
act of March 4, 1897, delegated to  
the Secretary the power to make  
regulations, is constitutional, that  
the regulation prohibiting the pas-  
turing of sheep on forest reserves  
without a permit is valid, and that  
the federal courts will enforce the  
regulation by injunction. The  
Supreme Court of Arizona, three  
judges sitting, in the case of  
Dent vs. United States (76 Pacific  
Reporter, 455), went still further,  
under circumstances which made  
the decision most emphatic. Dent  
was criminally prosecuted for graz-  
ing sheep on a forest reserve with-  
out a permit, in violation of the  
regulations, and the court had held  
that his act was not a crime; but as  
soon as the Dastervignes case was  
decided for the government the  
Arizona court granted a rehearing  
of the Dent case and held that the  
Dastervignes decision was binding  
on all courts in the ninth circuit in  
criminal as well as civil cases, and  
that Dent was therefore guilty of a  
crime.

So far, therefore, the court deci-  
sions as to the criminality of tres-  
pass contrary to the forest reserve  
regulation are conflicting. Final  
adjudication of the point can not  
be had until the ruling of a higher  
court has been secured; but no  
court has questioned the right of  
the Secretary of Agriculture to  
make regulations and to recover  
damages for trespass through civil  
action.

Grazing trespassers will be re-  
strained from violation of the regu-  
lations by injunction proceedings  
and sued for civil damages until  
the higher courts shall have  
reached a decision as to the crim-  
inal character of such trespasses.  
The forest service will continue to  
exclude unpermitted stock from all  
forest reserves and to collect graz-  
ing fees for all stock under permit.

**COTTAGE GROVE MARKET**

For Benefit of Farmers  
and Merchants

**ON HOME PRODUCTION**

PRODUCE.

(Prices quoted are wholesale.)

Butter, country	25c
Butter, cooking	20c
Butter, creamery, lb	35c
Butter fat	31 1/2
Eggs	30c
Chickens	12c
Onions, cwt.	\$2.00
Apples, bushel, according to quality	\$1.25
Chittim bark, old	7c
Hides, green	8 1/2 c
Salt hides, dry	10 1/2 c
Potatoes	\$1.25
Cabbage, cwt	\$1.50
Turnips, cwt	\$1.00
Carrots, cwt	\$1.00
Parsnips, cwt	\$1.75

HAY, GRAIN, ETC.

(Retail prices are quoted)

Wheat, bushel	80c
Wheat and vetch, chopped	\$26.00
Oats, bushel	40c
Brass, ton	\$20.00
Clean wheat chop, ton	\$26.00
Oats and vetch, chopped, ton	\$25.00
Mixed, ton	\$24.00
Shorbs, ton	\$25.00
Flour, sack, cwt	\$1.90
Flour (best) wheat, cwt	\$2.40
Roll'd barley, per 75 lb sack	\$1.05
Roll'd barley, standard, sack	\$1.00
Hay, baled, ton	\$12.00

**EVERY STOCK MARKET.**

Cows 2 1/2  
Sheep 4 1/2  
Veal, dressed 7c  
Hogs, dressed 7c

**INDIGESTION.**

No appetite, loss of strength, ner-  
vousness, headache, constipation, bad  
breath, general debility, sour risings,  
and catarrh of the stomach are all  
due to indigestion. Kodol Dyspepsia  
Cure cures indigestion. This new dis-  
covery represents the natural juices of  
digestion as they exist in a healthy  
stomach, combined with the greatest  
known tonic and reconstructive prop-  
erties. Kodol Dyspepsia Cure does  
not only cure indigestion and dys-  
pepsia, but the famous remedy cures  
all stomach troubles by cleansing,  
purifying, sweetening and strengthen-  
ing the mucous membranes lining the  
stomach.

Kodol Dyspepsia Cure after meals is  
not only thoroughly reliable digest-  
ant, but it contains great tonic and  
reconstructive properties as well.  
This famous remedy enables the  
stomach and digestive organs to thor-  
oughly digest, assimilate and contrib-  
ute to the tissues all of the nourish-  
ment that is contained in such food as  
may be eaten.

Kodol Dyspepsia Cure clears the  
way and makes sure the journey from  
sickness to health and weakness to  
strength. If the stomach is disor-  
dered Kodol will cure it.

Kodol Dyspepsia Cure lays the foun-  
dation for health, and the upbuilding  
of strength by cleansing, purifying  
and sweetening the glands and mem-  
branes of the stomach, and by sup-  
plying natural juices necessary to  
perfect indigestion, assimilation and  
nutrition. Kodol digests what you  
eat, prevents colic, cholera, diarrhoea,  
flux, dysentery and summer com-  
plaints generally, and its use will cure  
indigestion and chronic dyspepsia  
permanently. Kodol is good alike  
for young and old. Your druggist  
sells it.

**60 YEARS' EXPERIENCE PATENTS**

TRADE MARKS  
DESIGNS  
COPYRIGHTS & C.

Anyone sending a sketch and description may  
quickly ascertain our opinion free whether an  
invention is probably patentable. Communica-  
tions strictly confidential. HANDBOOK on Patents  
sent free. Oldest agency for securing patents.  
Patents taken through Munn & Co. receive  
special notice, without charge, in the  
**Scientific American.**

A handsomely illustrated weekly. Largest cir-  
culation of any scientific journal. Terms, \$3 a  
year in advance. Sold by all newsdealers.  
**MUNN & Co., 312 Broadway, New York**  
Branch Office, 625 F St., Washington, D. C.

**How's This?**

We offer One Hundred dollars Reward for  
any case of Catarrh that  
cannot be cured by Hall's Catarrh  
Cure.

F. J. CHENEY & Co.,  
Toledo, O.

We, the undersigned, have known  
F. J. Cheney for the last 15 years, and  
believe him perfectly honorable in all  
business transactions and financially  
able to carry out any obligations  
made by him.

WALDING, KINMAN & MARVIN,  
Wholesale Druggists, Toledo, O.  
Hall's Catarrh Cure is taken inter-  
nally, acting directly upon the blood  
and mucous surfaces of the system.  
Testimonials sent free. Price 75 cents  
per bottle. Sold by all druggists.  
Take Hall's Family Pills for Con-  
stipation.

**DeWitt's Little Early Risers**  
The famous little pills.

**TIMBER LAND, ACT JUNE 3, 1878—NOTICE FOR PUBLICATION.**

United States Land Office,  
Roseburg, Ore., Nov. 25, 1896.  
Notice is hereby given that in com-  
pliance with the provisions of the act  
of Congress of June 4, 1878, entitled  
"An act for the sale of timber lands  
in the States of California, Oregon,  
Nevada and Washington Territory,"  
as extended to all the Public Land  
States by act of August 4, 1892,  
IRA D. HYLAND,

of Lowell, County of Lane  
State (or Territory) of Oregon,  
has this day filed in this office his  
sworn statement No. 7620 for the  
purchase of the N 1/4 of SW 1/4, NW 1/4 of  
SE 1/4 and SW 1/4 of NE 1/4 of Section No. 12  
in Township No. 29 south, Range  
No. 2 west, W. M., and will offer  
proof to show that the land sought is  
more valuable for its timber or stone  
than for agricultural purposes, and  
to establish his claim to said land be-  
fore W. W. Calkins, U. S. Commis-  
sioner, at his office in Eugene, Ore-  
gon, on Thursday, the 4th day of  
April, 1897.

He names as witnesses:  
Oscar Drury, Grover Walker, Wil-  
bur Hyland, William W. Sailor, of  
Lowell, Oregon.  
Any and all persons claiming ad-  
versely the above-described lands are  
requested to file their claims in this  
office on or before said 4th day of  
April, 1897.  
J. T. Briscoe, Register.

**NOTICE FOR PUBLICATION.**

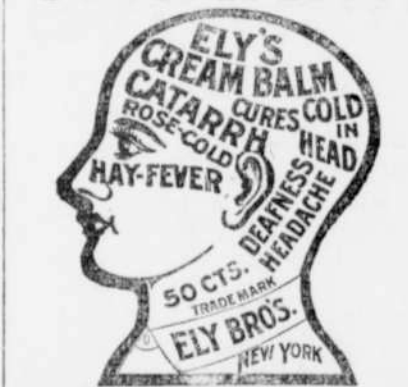
Department of the Interior,  
Land Office at Roseburg, Ore.,  
October 22nd 1896.

Notice is hereby given that George  
W. Holland of Crow, Oregon, has  
filed notice of his intention to make  
final five-year proof in support of his  
claim, viz: Homestead Entry No.  
9642 made Nov. 21, 1890, for the NE 1/4  
Section 32, Township 19 S., Range 6  
W., and that said proof will be made  
before W. W. Calkins, U. S. Commis-  
sioner, at his office, at Eugene, Ore-  
gon, on January 5, 1897.

He names the following witnesses  
to prove his continuous residence  
upon and cultivation of the land, viz.:  
Frank Croushaw of Panther Ore.;  
Church Stephens of Crow, Oregon;  
Scott Gillespie of Panther, Oregon;  
Frank Holland of Crow, Oregon.  
27-22 BENJAMIN L. EDDY, Register.

Nearly every person who is subject  
to attacks from the stomach suffers  
a morbid dread of dietetic treatment  
for relief, that is three-fourths starva-  
tion and one-fourth toast and milk.  
On the other hand, you can eat as  
you please and digest the food by the  
aid of a good digestant, thus giving  
the tired stomach equally as much  
rest. Eat what you please and take  
a little Kodol for indigestion after  
your meals. It digests what you eat.  
Sold by Bensons Pharmacy.

**CATARRH**



**ELY'S CREAM BALM**  
This Remedy is a Specific,  
Sure to Give Satisfaction.  
GIVES RELIEF AT ONCE.  
It cleanses, soothes, heals, and protects the  
diseased membrane. It cures Catarrh and  
drives away a Cold in the Head quickly.  
Restores the Senses of Taste and Smell.  
Easy to use. Contains no injurious drugs.  
Applied into the nostrils and absorbed.  
Large Size, 50 cents at Druggists or by  
mail. Trial Size, 10 cents by mail.  
ELY BROTHERS, 55 Warren St., New York

**THOMPSON HOTEL**

Mrs. I. E. THOMPSON.

Rates per day .....\$1.00  
Room and board, per week .....\$4.50

**New Time Table.**

In effect Sunday, Nov. 25 12 a m

**NORTH BOUND**

No 16 1:53 a m  
No 18 Cottage Grove Local 5.10 a m  
No 12 11.20 a m  
No 14 New Fast Train 6:13 p m

**SOUTH BOUND**

No 15 1.26 a m  
No 13 New Fast Train 4.30 a m  
No 11 2.55 p m  
No 17 Cottage Grove Local 9.50 p m

**O. & S. E. R. R. CO.**

Time Table No. 4

To take effect November 1 1896.

East Bound 3 and 4 Tuesday W. Bound  
and Sat only

No 2—No 1 1 and 2 Daily Ex-  
cept Sunday.

No 2—No 1	STATIONS	No 2—No 4
2:30 P.M.	Cottage Grove	4:27 P.M.
2:40 P.M.	Walding	4:35 P.M.
2:47 P.M.	Cerro Gordo	4:40 P.M.
2:58 P.M.	Dopora	4:48 P.M.
3:08 P.M.	Wicks	4:57 P.M.
3:28 P.M.	Red Bridge	5:08 P.M.
3:59 P.M.	Walding	5: