

Pause, Pause, Young Man.

The Adventists are conducting their meetings in the English language this week, and the fiery eloquence of the reverend gentlemen is burning messages of truth into the hearts of our people which will no doubt take root and produce a crop of dissension and subjects for discussion for many a long winter evening.

Now we hope these people may be able to put forth some good seed that shall bear much fruit regardless of the day and the mere name of their sect.

Alh, young man open wide the doors of your intellect and drink from the fountain of knowledge always and everywhere it be in the magnificence of a stone columned church that cost millions, or in the lofty tent'd tabernacle of our Adventist brethren—Aurora Borealis

Reduced Summer Excursion Rates

On and after June 1, 1906, the Southern Pacific, in connection with the Corvallis & Eastern railroad, will have on sale round trip tickets from points on their lines to Newport, Yaquina and Detroit at very low rates, good for return until October 10, 1906.

Three-day tickets to Newport and Yaquina, good going Saturdays and returning Mondays, are also on sale from all East Side points, Portland to Eugene, inclusive, and from all West Side points, enabling people to visit their families and spend Sunday at the seashore.

Season tickets from all East Side points, Portland to Eugene, inclusive, and from all West Side points, are also on sale to Detroit at very low rates with stop-over privileges at Mill city or any point east, enabling tourists to visit the Santiam and Bstenbush Hot Springs in the Cascade mountains, which can be reached in one day.

Season tickets will be good for return from all points until October 10. Three-day tickets will be good going Saturdays and returning Mondays only. Tickets from Portland and vicinity will be good for return via the East or West Side at option of passenger. Tickets from Eugene and vicinity will be good going via the Lebanon-Springfield branch if desired. Baggage on Newport tickets checked through to Newport; on Yaquina tickets to Yaquina only. Sunday excursions to Newport on the C. & E. will begin June 10th or 17th and run every Sunday thereafter leaving Albany at 7:30 a. m.; leave Corvallis 8 a. m.

S. P. trains connect with the C. & E. at Albany and Corvallis for Yaquina and Newport. Trains on the C. & E. for Detroit will leave Albany at 7:30 a. m. enabling tourists to the Hot Springs to reach there the same day. Trains from and to Corvallis connect with all East Side trains on the S. P.

Full information as to rates, time tables, etc., can be obtained on application to J. C. Mayo, Gen. Pass. Agt., C. & E. R. R., Albany; A. L. Craig, G. P. A., S. P. Co., Portland, or any S. P. or C. & E. agent.

Rates from Cottage Grove to Newport \$6, to Yaquina \$6.

The reason that the end lines of a lode claim must be parallel is that if they were allowed to diverge the claimant would have an ever increasing lineal extent of the vein as it descends.

Agassiz lake is an extinct glacial lake that occupied the valley of the Red River of the North during the late Pleistocene period. This lake extended over a large area in North Dakota, Minnesota and Canada, and exceeded all the great lakes in size. The overflow of the lake is supposed to have passed into the Minnesota river through a channel about 50 feet deep, 50 or more miles long and a mile wide, the outlines of which may still be traced. The lake was held back by the northern lee sheet, but after the melting of the latter, the lake once more resumed its natural drainage to the north through the Red river.

Sawmills are Active.

Addison Bros., near Lorane, at the head of the Siuslaw valley, are running to full capacity with orders ahead as long as the roads will permit them to haul.

Chapman Bros., at Divide, have moved their mill from the Albert Chapman place to the Frank Chapman place and are running it to full capacity, cutting ties and side lumber.

G. P. Miller moved his mill from Veatch Creek to Divide and is cutting out a small bunch of timber for Domingo Perini, which he expects will take him another month, when he will move the mill to the Lindstrom timber, which will give him two or three years' cutting.

Philip Hohl, Cottage Grove, is now installing a mill at Curtin and expects to be running by the last of this month. He will cut 25,000 feet per day. He has all the orders on hand that he can take care of in some months to come.

W. C. Shortridge, who is now operating the Wallace mill on the Coast Fork river, is finishing up what orders he has on hand, preparing to overhaul his mill and put it into shape to cut 25,000 feet per day.

J. B. Rouse has overhauled the Coast Fork mill and increased the cut to about 25,000 feet per day. He has all the orders on hand that he can take care of for some months to come.

McKibben Bros., Dorena, have been shut down for two weeks, making changes in their mill. They expect to start up this week and from now on will turn out from 15,000 to 20,000 feet per day.

Frank Taylor, of Divide, is now running steadily, but is short on teams to haul lumber to the truck. He expects however, to get all the teams needed as soon as harvest is over. He contemplates some improvements in his mill to increase the capacity as soon as he can spare the time to shut it down, prices and business being too good at the present time.

A. E. Shiera has started up his new mill at Krewon and is cutting 15,000 feet per day, with plenty of orders to keep him running steadily for some months.

J. H. Chambers, of Cottage Grove, is running the mill at Alea steadily, cutting 40,000 to 50,000 feet per day. He has been somewhat short of logs lately being delayed waiting for a donkey engine.

The Wildwood Lumber Company's mill at Wildwood is being overhauled and made ready to start up. The interests formerly held by Mr. Hengen have been purchased by Dunn & Johnson. They expect to cut 25,000 to 30,000 feet per day as soon as they have the machinery, now ordered, installed.

Star Mill Company and Taylor & Son's mill, of Star, are both running to full capacity; also the Chambers' Lumber Company, of Dorena, Mr. Russell, of that company, being now on the ground.

Doolittle Bros. & Bales have purchased a new engine and boiler for the Doolittle Bros.' mill expect to start up in the next few days under the title of Cerro Gordo Lumber Company, of Dorena.

It is reliably reported that some parties from Aberdeen, Wash., and J. I. Jones, of this city contemplate putting in a good-sized mill on the Jones' fish pond in Cottage Grove. We understand that the details have all been closed and it all hinges on the railroad company putting a switch into the timber.

The Brown Lumber Company, of Cottage Grove, has been shut down for some time during the last month on account of logs. They purchased a donkey about a month ago, which they are anxiously awaiting, as they expect when they get it to have power enough to keep them running.

The Page Lumber Company, Drain, are now running. Mr. Perkins, formerly of that mill, having sold his interests, contemplates building a small mill about two miles from Drain.

E. C. Mowery, of California, has purchased the E. B. Spangenberg mill at Yoncalla and will increase the capacity to 35,000 feet by adding another boiler. Either a flume or cable system will be installed to bring the lumber to the railroad.

All the mills in this vicinity are snowed under with orders, and, with promise of a car-shortage I would not care to prophesy what the result will be in sixty days.—Timberman.

Reduced Round Trip Excursion Rates.

Round trip passenger rates Chicago to Portland and return, via direct line will be \$75.00 and from Missouri River points \$60.00.

These tickets will be on sale daily commencing June 1st and continuing until Sept. 15th with final return limit of October 31st.

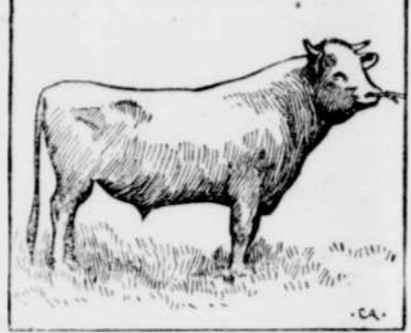
J. M. ISHAM

Subscribe for the Leader.



The illustration presents what we consider a typical dairy form for a bull. It is about as far removed from the accepted "beef form" as it is possible to get. Of course "form" must approve itself by "performance," not necessarily in any particular case, but generally and to the conviction of open minded, intelligent judges.

Hector Marigold, although less than six years old, has six tested daughters to his credit with records ranging from 48.5 pounds of butter fat in twenty-one days to 16.2 pounds and 14.5 pounds in



JERSEY BULL HECTOR MARIGOLD.

seven days and is the sire of sixty other very promising heifers and heifer calves.

His present weight is 1,740 pounds, and in this respect as well as in dairy potency he is a good representation of the recent and present trend among American Jersey breeders for greater size.

His breeding also tends to confirm the theory that the male inherits from the dam and the female from the sire. Thus Hector Marigold inherits his ability as a dairy sire from his granddam, the famous Mella Ann, through her equally famous son, Mella Ann's Son, and his great-grandam, Ida Marigold, through her son, Stoke Pogis of Prospect, and his daughter, Grace Marigold, whose record is 20 pounds 1 ounce of butter in seven days when two years and three months old.—Hoard's Dairyman.

Change in Dairy Practice.

It is interesting to note the swaying of the pendulum of opinion in farm matters. Once the warning word incessantly presented to farmers was "warmth"—warmth for poultry houses, warmth for stables. Now there begins to be the preaching of another gospel—closed sheds or covered barnyards for cattle, open front houses for poultry.

Information received from practical dairymen, who allow cows the freedom of a shed or covered yard instead of stabling them, led the Illinois experiment station to make a test of the matter, and it appears that the cows keep in a cleaner condition and more vigorous health, with less labor in caring for them, the manure can be more easily and better handled, and last, but not least, the milking stable is in more wholesome condition, thereby increasing the certainty of pure milk.

Worse Than a Slot Machine.

The unprofitable cow should not have a place in any man's herd, for she is worse than a slot machine. The farmer puts into her that which he has no chance whatever of getting out. She is a blood sucker, a parasite, living on the rest of the herd and consuming a part of what they should have. She is protected by the general average production of the herd and brought to light only when the scales and Babcock test are applied to each animal in the herd. And when so brought to light she should not be tolerated for a minute—not kept until her place can be taken by a better one, but she should go instantly, says M. Stenson in Farm and Fireside.

Whey Butter.

At the recent meeting of the Wisconsin Cheesemakers' association Professor Ferrington stated that for several years the dairy students at the State university had been making an excellent quality of whey butter from Swiss cheese whey by skimming the whey with a separator and using modern methods of buttermaking. During the summer he spent several weeks among the 350 Swiss cheese factories in the southern counties of Wisconsin studying the making of whey butter at the factories. He found that Swiss whey contained very often as much as 1 per cent of butter fat.

The Dairy Steer.

Wonderful powers of feeding and assimilation have been developed in the high type dairy cow, says Holstein-Friesian Register. That she transmits both her feeding capacity and assimilating powers to her male progeny is becoming apparent in feeding experiments with dairy steers. And those who have undertaken the task of discrediting the value of the dairy steer as a feeder have a hard task before them.

Where the Dairy Cow Reigns.

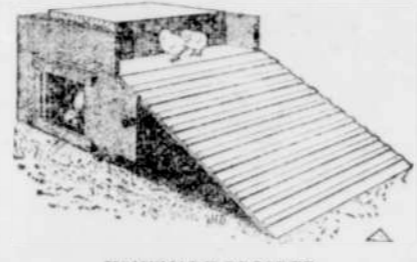
Professor Eckles of Missouri, who has been studying dairy conditions in Europe, says that the parts of Europe developed to the greatest extent in an agricultural way are the noted dairy sections, and the most intelligent and prosperous of European farmers are dairy farmers. The richest land and the highest priced land over there fairly swarms with dairy cows.



RAISING CHICKS.

How to Make a Brooder Out of an Old Packing Case.

Those who prefer the artificial method of raising chicks can make a brooder out of an old packing case which will accommodate fifty chicks at a cost of about a dollar. Such a brooder has given excellent results at one of the experiment stations when used in a shed or colony house. Details of construction of a brooder of this kind are shown in the illustration. The lower section of the brooder, which contains the lamp for heating, is a three

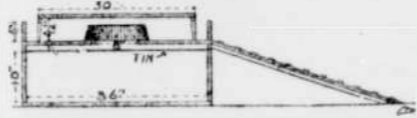


HOMEMADE BROODER.

feet square made of ten inch boards which is covered with tin or galvanized iron.

Above this cover, around the edges of the lamp box, one inch strips are nailed. Two one inch holes are bored through these strips on each side of the box for the purpose of ventilation. A floor of matched boards is laid on the strips. A hole eight inches in diameter is cut in the center of this floor, and over it is reversed an old tin pan ten inches in diameter, the sides of the pan being punched full of holes to allow free circulation of heat. Over this is placed a table two feet six inches square, with legs four and a half inches high.

Around the sides of this table is tacked a curtain of felt cut from top to bottom at intervals of five or six inches to allow the chicks to pass in and out at will, the whole being surrounded by boards four inches high and three feet long nailed together at



SECTION THROUGH MIDDLE OF BROODER.

the corners and resting on the floor of the brooder. When the chicks are ten days old one of these boards may be taken away and a bridge used so that the chicks may run from the hover to the floor of the room.

COLD FRAME LETTUCE.

Sow Now For Succession and Transplant in March.

Sow lettuce seed now and for succession about every two weeks. Excellent varieties are: Market Gardeners', Private Stock, Immensity and Trianon Cos. Trianon Cos is usually sown about the 1st of April and from that date on till August is continued with all the varieties at intervals of seven to ten days. From that time lettuce is inclined to "bolt" or run to seed.

These are three good lettuce for all purposes. They stand the summer well and make exceedingly fine heads.

Trianon Cos when properly grown is one of the best flavored in cultivation, and Immensity is one of the largest. As soon as they are ready pot off into two inch pots, and as soon as they have filled these well with roots transfer to cold frames, which will be about the first week in March.

Provided the frames have been idle all winter take off about two inches of the old soil, and then throw it up well with a fork or spade and give it a good sprinkling of air-slacked lime to sweeten the soil. If the days are mild take the sash off, putting them on again at night.

The ground should be kept constantly stirred to mellow the soil and keep down weeds, giving copious supplies of water when needed, but when heading keep the water from the heart.

The New Flax Industry.

An industry new at least to Minnesota has been introduced during quite recent years. It relates to the manufacture of flax straw into binding twine. Professor Shaw affirms in Orange Judd Farmer that one of the finest features of the new industry is that it will tend very much to lessen waste on many farms of the west. Nowhere probably in all the United States has the sin of waste prevailed to such an extent as in the western and northwestern states. Flax straw was almost a complete waste. The greater the number of acres devoted to the growth of flax the greater was the waste.

Hampshires and the Bacon Type.

At the last international I was much amused at the discussion in various quarters as to whether the Hampshire swine are of the bacon or lard type. The individual who calls Hampshire swine bacon animals has not yet learned the A B C of what the term bacon means, remarks Professor T. W. Shaw in American Agriculturist.

The Draft Horse.

The draft horse is the horse for the farmer. There is less risk in raising it, and then you have something when it is grown—something that will work and do a lot of it and something that will sell, says a farmer.

On the Alert.

Ohio farmers, according to an exchange, are demanding fairness and will see that all the legislation in Ohio is not exclusively for two or three large cities.

High Grade Meats

Fresh Beef, Pork, Mutton and Veal always ready.

Our Refrigerator

is the finest in Oregon.

Fresh Fish each Tuesday and Friday.

See our plant, everything new and up-to-date.

J. H. Bartels & Co.

Phone Main 83.

You will always be happy if you burn electric lights, for they will "Tickle you to death."

Willamette Valley Electric Co.

The Funny Pictures for the Children

Children always enjoy the Leader supplements. The Leader is going to make this a permanent feature, and we know your children would appreciate getting the Leader regularly. Don't fail to subscribe for the Leader.

Kennedy's Laxative Honey and Tar is the original laxative cough syrup and combines the qualities necessary to relieve the cough and purge the system of cold. Contains no opiates. Benson Pharmacy.

Market Reports.

Portland, July 28, 1906.

GRAIN, PRODUCE, FEED. Wheat—Walla Walla, 69c; Valley, 70c; bluestem, 71 red, 66c. Oats—White \$32; gray, \$31. Barley—Brewing, \$24; feed, \$23.75; rolled, \$25 to 26. Hay—Timothy, \$11.00 to \$12.50; clover, \$8.50 to \$9; cheat, \$7.50 to \$8; alfalfa, \$11. Millstuffs—Middlings, \$25 to 26; chop, \$17; bran, \$17 to 18; shorts \$18 to 19.

Flour—Hard wheat, patent, \$4.10; straight, \$3.45; Graham, \$3.50; rye, \$5; whole wheat flour, \$3.75; valley flour \$3.50 to 3.65 Dakota, \$6.50 to 7.25; Eastern rye, \$5.40; Pillsbury, \$6.20. Corn—Whole, \$26; cracked, \$27 per ton. Rye—\$1.50 per cwt.

Butter—Fancy creamery, 21 1/2c, 22c; city creamery, 21 1/2c dairy 14 to 15c; store 14 to 14 1/2c. Cheese—Young America, 14 1/2c Oregon full cream, 13c to 14 1/2c. Eggs—Fresh Oregon ranch 20 to 21. Poultry—Roosters, 9 to 10c; hens 13; fryers, 16c to 17c; broilers 14 to 16c; geese, live, 8 to 8.50 dressed, 11-11 1/2; turkeys, live, 14-15

FRUITS AND VEGETABLES. Grape fruit—Crate \$4. to 4.50 Cranberries—\$14. Potatoes—Oregon, 40 to 65c. LIVESTOCK MARKET. Cattle—Best steers \$3.50 to 3.65; cows 2.25 to 2.50; calves, \$4.00 to \$4.50. Sheep—\$4.00 to 4.25. Hogs—\$7 to 7.35.

HOFS, WOOL, ETC. Hops—Choice 10 to 11 Mohair, choice 28 to 30c Wool—Valley 22 to 25c; East, etc. Oregon 14 to 22c.

INDIGESTION.

No appetite, loss of strength, nervousness, headache, constipation, bad breath, general debility, sour risings, and other troubles of the stomach are all due to indigestion. Kodol Dyspepsia Cure cures indigestion. This new discovery represents the natural juices of digestion as they exist in a healthy stomach, combined with the greatest known tonic and reconstructive properties. Kodol Dyspepsia Cure does not only cure indigestion and dyspepsia, but the famous remedy cures all stomach troubles by cleansing, purifying, sweetening and strengthening the mucous membranes lining the stomach.

Kodol Dyspepsia Cure after meals is not only thoroughly reliable digestant, but it contains great tonic and reconstructive properties as well. This famous remedy enables the stomach and digestive organs to thoroughly digest, assimilate and contribute to the tissues all of the nourishment that is contained in such food as may be eaten.

Kodol Dyspepsia Cure clears the way and makes sure the journey from sickness to health and weakness to strength. If the stomach is disordered Kodol will cure it.

Kodol Dyspepsia Cure lays the foundation for health, and the upbuilding of strength by cleansing, purifying and sweetening the glands and membranes of the stomach, and by supplying natural juices necessary to perfect indigestion, assimilation and

Little Early Risers

The famous little pills.

THE ORIGINAL LAXATIVE COUGH SYRUP KENNEDY'S LAXATIVE HONEY AND TAR Red Clover Blossom and Honey Bee on Every Bottle.

Buy on Credit!

this \$60 Machine for \$25

It is a high-arm, drop head, ball bearing, lock-stitch, double feed, self-threading shuttle, has automatic bobbin winder and other latest improvements. This is the ANTI-TRUST MACHINE. It is the same machine agents are asking you \$60 for. All attachments go with each machine. Sold for only \$25 cash and \$3 monthly.

Write TODAY for free FUTURE CATALOGUE showing elegant household goods we will ship (freight prepaid) on Easy Payments—our new CREDIT plan. Govurtz Furniture Company 173-175 First St., PORTLAND, OR.

CATARRH



ELY'S CREAM BALM

This Remedy is a Specific, Sure to Give Satisfaction. GIVES RELIEF AT ONCE.

It cleanses, soothes, heals, and protects the diseased membrane. It cures Catarrh and drives away a Cold in the Head quickly. Restores the Senses of Taste and Smell. Easy to use. Contains no injurious drugs. Applied into the nostrils and absorbed. Large Size, 50 cents at Druggists or by mail; Trial Size, 10 cents by mail. ELY BROTHERS, 56 Warren St., New York.

THOMPSON HOTEL

Mrs. I. E. THOMPSON. Rates per day .....\$1.00 Room and board, per week .....\$4.50

ARRIVAL AND DEPARTURE OF S. P. TRAINS.

NORTH BOUND SOUTH BOUND No. 12 .....11:55 p.m. No. 11 .....3:05 p.m. No. 16 .....2:02 a.m. No. 14 .....2:34 a.m.

O. & S. E. R. R. CO.

Time Table No. 4 To take effect April 23, 1905.

Table with columns for station names, arrival times, and departure times for various routes.

A. B. WOOD, Manager