

More Money for Free Libraries.

Salem, Jan. 27.—Such an interest has been awakened throughout the rural districts in regard to free circulating libraries that the state library commission has long ago exhausted its resources, and cannot supply libraries save where the community will raise the necessary funds to purchase the books.

The next legislature will be asked to provide considerable more money for free libraries.

Miss Marvin, secretary of the state library commission, has received six free scholarships from the Correspondence School Department of the University of Chicago, for free distribution among the convicts of the state penitentiary.

The purpose is to give any prisoner who shows a disposition to reform a chance to learn some useful trade or take the preliminary steps for a scientific education.

Salt Lake Streetcars Collide in Heavy Fog.

Salt Lake City, Jan. 25.—During a dense fog which prevailed here early today at least 20 persons were injured in three collisions between streetcars. Many of the injured are school children.

Business Men are Working Together.

Some five months ago the "Roseburg Merchants' Protective Association" was organized, and during its brief career it has proven to be a very good organization.

Now the organization has been broadened and is made a Douglas county affair. Secretary Louis Barzee, to whose untiring energy is due a great deal of the success which has come to the organization, has just returned from the northern part of the county.

There are nearly 100 known geysers in Iceland. The two most remarkable are the Grand geyser, and the Few geyser. Another well known geyser is the Great geyser. It rises from a tunnel shaped basin lined and edged with sinter.

The material of which imitation gem stones are made is known as "strass." This is made from different receipts, but usually includes red lead, rock crystal, potassium carbonate, borax and white arsenic.

Many a man who is selling milk or cream or making butter remains in perpetual ignorance of what each cow is doing. And so it often happens that while some in the herd would make a profit, it is eaten up by those that make only loss.

Silage will not taint cream or milk provided it is so preserved that it does not spoil. The cows should be fed only as much as they will consume, and this feeding must be done directly after milking.

Subscribe for the Nugget.



IN THE DAIRY

Shall the cows face out or in? is a question quite important from a sanitary point of view, yet we presume it will never be answered to the satisfaction of all concerned.

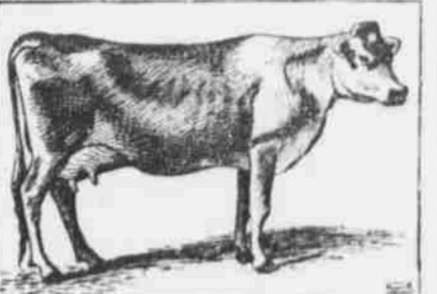
In the hayloft the hay chutes are arranged on the sides directly over the feeding alleys. One great advantage of this arrangement is found in the effect of the King system of ventilation.

The only argument we can see for facing the cows inward is the greater ease of feeding, but in our mind this is greatly overbalanced by the greater ease of getting rid of the manure and keeping the cows neat and clean.

Barn Ventilation.

The average dairy barn is too open. Its ventilation is continuous and too profuse, entering through cracks, loose, ill fitted windows, chutes and otherwise.

The cow Clarion Girl was eigtheenth Jersey in Classes A and B in the dairy demonstration at the St. Louis world's fair.



JERSEY COW CLARION GIRL.

ord of her milk yield back of April 21. The contest at St. Louis ended Oct. 13, seven months after this cow's lactation period commenced, and at that date she was giving over thirty pounds of milk, testing over 5 per cent of butter fat.

Clarion Girl is owned by Howard Willetts of New York.

Cows to Cut Out.

A good many so called "dairy cows" now going through the motions of producing milk in the middle states and eastern states could be cut out of the dairy herds this year with marked benefit to the milk business in general.

Know Your Cows.

Many a man who is selling milk or cream or making butter remains in perpetual ignorance of what each cow is doing. And so it often happens that while some in the herd would make a profit, it is eaten up by those that make only loss.

The Odor of Silage.

Silage will not taint cream or milk provided it is so preserved that it does not spoil. The cows should be fed only as much as they will consume, and this feeding must be done directly after milking.

FEEDING DAIRY COWS.

Expert's Opinion on What Constitutes a Good Winter Ration.

Dr. V. H. of Pennsylvania proposes this very practical problem and asks for a solution: "I have fifteen cows milking this winter. I have on hand 15 tons of red clover hay, 8 tons of alfalfa, 300 bushels of sugar beets, 2,400 bushels of corn stover, 1,000 bushels of shelled corn, and I thought of investing \$200 for feeds.

"We will suppose the doctor wants to feed his cows six months, or 180 days, equal to feeding one cow 2,700 days. He has 30,000 pounds of red clover hay, so we may allow about ten pounds per day; 16,000 pounds of alfalfa, and we could allow five pounds per day; the stover is abundant, so we should shred it and feed all the cows would care to glean over and use the rest for bedding.

"Corn is a good cow feed, a good horse feed, a good hog feed, a good poultry feed and a pretty good human feed. Yes, we know that corn is a very good feed, and we also know what we are feeding when we feed our own golden maize, which is much more than we can say when we feed many of the mixtures and abominations now offered by the feed dealers.

"Now, let the doctor buy eight tons of the newest, sweetest, cleanest and flakkest bran he can get and one and a half tons of the best old process unseed meal for that \$200, or less if possible, and feed about five pounds of bran and one pound of linseed meal daily. These figures are approximate and nearly the maximum for a mature cow, a big eater and a heavy producer.

Salting Fodder For Cows.

A dairyman who by reason of experience is in a position to know whereof he speaks recently said, "I would rather have ten tons of nicely cured fodder for my cows than twenty tons of millet hay."

Build a Silo.

If you have only a small herd of cows you should build a silo.

FEEDING FOR MILK

Get quality of milk by breeding, and quantity by feeding. Of the grains, corn and oats and linseed meal, together with alfalfa or clover hay, will produce the most satisfactory results in the dairy.

It Pays to Feed Well.

The man who thinks it does not pay to feed cows good feed or give them good care and shelter is losing money. He thinks that by not spending money he is saving it. He does not get any to spend or save. It is like wheat. As long as it is in the bin it does not increase, but loses value.

A Feeding Pointer.

Remember that the cow is a machine that transforms the feed you cannot eat into milk that you can consume; therefore do not put any nasty, tainted feed into that machine and expect pure and wholesome milk to issue therefrom.

Feeding Refuse Sugar.

The progress of scientific dairying is shown by increased attention devoted to the subject in Russian dairying sections, where various systematic experiments are carried on somewhat on these lines. A recent test was to establish the effect of feeding refuse sugar to milk cows.

Study Grain Composition.

A study of the composition of our common feeds will richly repay our dairymen, says Farm Progress. There is no good sense in feeding two grains that are practically the same in composition and differ only in appearance.

Maintaining Milk Flow.

The dairy farmers who make the most out of the season's work are those who have the best cows and who buy bran, middlings or other feed if it is necessary to keep up the flow of milk and the nervous strength and power of the cows.

A. H. KING

Attorney at Law.

COTTAGE GROVE, ORE.

BARKER & PERMAN

PROPRIETORS OF THE EXCHANGE

DEALERS IN FINE WINES, LIQUORS, CIGARS.

Main street, Cottage Grove, Ore.

J. S. Medley, J. C. Johnson

Medley & Johnson,

Attorneys-at-law

Office Suite 3 Bank Bldg.

Special attention given to Mining and Corporation Law.

J. E. YOUNG

Attorney-at-Law

Office on Main street, West side

COTTAGE GROVE, ORE.

MINING AND ORE TREATMENT

Designing and construction of ore reduction works and general machinery plants, mechanical drafting.

C. D. GROVE, M. E. McKay Building, Portland, Ore.

Haff & Colwell

Mining Engineers

U. S. Mineral Surveyors

Room 1 Bank Bldg., Cottage Grove

902-603 Oregonian Bldg., Portland, Oregon.

H. C. MADSEN.

WATCHMAKER.

repairing at reasonable charges.

All work guaranteed first class.

Watches, Clocks and Jewelry at Lowest Prices

COTTAGE GROVE, ORE.

The First National Bank

COTTAGE GROVE, ORE.

Paid up Capital, \$25,000.00

Money to loan on approved security

Exchanges sold, available any place in the United States

HERBERT EARLE, T. F. WHEELER

President, Cashier

MAY LIVE 100 YEARS.

The chances for living a full century are excellent in the case of Mrs. Jennie Duncan, of Hayneville, Me., now 70 years old. She writes, "Electric Bitters cured me of Chronic Dyspepsia of 20 years standing and made me feel as well and strong as a young girl."

Burton Promises Money For Bar.

Washington, Jan. 18.—A delegation of Oregon and Washington citizens, consisting of Senators Fulton and Geasin, Representative W. L. Jones, Messrs. Harvey W. Scott and Joseph N. Teal, had an extended interview with Chairman Burton to pay on behalf of river and harbor improvements in the northwest.

Chairman Burton understands the situation thoroughly, and expressed his desire to do all that the delegation asked.

He said, however, that the great pressure for appropriations from all parts of the country precluded doing this, and his efforts would have to be confined to obtaining appropriations to protect the works already commenced, and which will suffer through the cessation of work.

Mr. Teal, who has been working actively since his arrival here to secure proper recognition of Oregon's river and harbor needs, says that Fulton and Geasin are doing everything possible to secure adequate appropriations, in which they are being assisted by Senators Ankeny, Fils Heyburn and Dubois, as well as the entire house delegations from the Pacific northwest.

The Steamer Regulator which was on the docks at Portland being repaired, was burned Wednesday and two men killed from an explosion of the oil tanks, probably caused by the fire from the workmen's torches.

Free with Nugget subscription. The New York Tribune Farmer, a weekly agricultural paper.

BEATS THE MUSICURE.

"To keep the body in tune," writes Mrs. Mary Brown, 20 Lafayette Place, Poughkeepsie, N. Y. "I take Dr. King's New Life Pills. They are the most reliable and pleasant laxative I have found."

Advertisement for Great Northern Railway, featuring 'The Compartment Observation Cars of the Oriental Limited' and 'Afford you The privacy of your home - The comforts of a club - The luxury of a first class hotel.'

Advertisement for Fashion Stables, featuring an illustration of a horse-drawn carriage and the text 'FASHION STABLES Cottage Grove, Oregon'.

STANDARD TABLETS AND CURE... The Coos Bay Harbor says that the North Inlet canal is now completed and was opened for use the first of this week.

Only 25c in addition on your subscription secures the Farm and Country Journal for a year. A journal of the use of the Ladies Home Journal and an excellent paper.

HALF THE WORLD WONDERS... Those who use Benson's Anker-Pain-Expeller wonder how it will cure cuts, wounds, burns, sprains and all such eruptions.

These seems to have been only 15 persons from the terrible wreck of the Steamer Valparaiso on the rocks of Vancouver, Washington, out of the 100 people aboard here at the time of the wreck.

CHAMBERLAIN'S COUGH REMEDY ABSOLUTELY HARMLESS... The fault of giving children medicine containing any injurious substance, is sometimes more disastrous than the disease from which they are suffering.

Advertisement for Private Hospital and Sanitarium, featuring 'PLAIN and MEDICATED BATHS' and 'ELECTRICITY, ETC.'.

Advertisement for Dr. King's New Discovery, featuring 'KILL THE COUGH AND CURE THE LUNGS' and 'WITH Dr. King's New Discovery FOR CONSUMPTION'.

Table with 4 columns: ARRIVAL AND DEPARTURE OF S. P. TRAINS. NORTH BOUND, SOUTH BOUND, No. 12, No. 14, No. 16, No. 18.

O. & S. E. R. R. CO. Time Table No. 4 To take effect April 24, 1905.