

A Record Breaker in Cinabar Mines.

THE BLACK BUTTE QUICKSILVER MINE AND THE DENNIS FURNACE.

Quicksilver, that most needful metal in the recovery of the precious ores, gold and silver, from their ores and placers, and which is becoming more in demand each day with the new developments and discoveries in our modern arts and sciences, which call for its use, is becoming scarce, not alone from the increasing consumption, but from the failing of some of the mines that have been producing.

The sale of mercury is controlled by the Rothschild house, who operate the Almaden mine in Spain, which is the largest producer. In the United States California and Texas have produced considerable quicksilver, but these fields are not as productive now as they have

been. For some years it has been known that the Cascade and Calappin mountains contained in some districts large cinabar deposits, which have been worked somewhat, but it did not amount to much until the Black Butte Quicksilver Company obtained the properties now operated by them some five years ago, which now are controlled by Mr. W. R. Dennis, a metallurgist of many years' experience in this work. To say that the Black Butte mine bids fair to become the greatest quicksilver mine, is not unreasonable, when the vastness of the present ore bodies are considered, and the amount and richness of the ores now ready for treatment, through the 15,000 feet of development work which has been done. Specimens of the ore run from 30 to 70 per cent pure.

The magnitude of the ore bodies cannot be appreciated until they are seen. The crest of a ridge rising 1750 feet above the level of the creek, has massive croppings continuously for a distance of 7500 feet. These croppings are all impregnated with cinabar. They appear as cliffs at times and great jutting rocks, but careful analysis along the line of the ledge, which follows the ridge crest, shows them to be cinabar ore. A vertical depth of more than 1600 feet may be had by driving an adit from the level of the present furnace. Above this adit would be backs of 2000 feet as the ledge dips at about 57 degrees from the horizontal.

The ores from the mine were treated for a time in a Scott 50-ton furnace, but the loss was so great and the expense so large that it was not a paying investment. In view of this fact Mr. Dennis has for years been working on a model of a new furnace, which with a moderate number of men, can turn out a large quantity of pure mercury. For

the heat on both sides. The heat in the ore tower is not permitted to run ad libitum through the ore, but is regulated in various zones at fixed relative temperatures, and is under remarkably perfect control of the operator. The arrangement of a series of primary and secondary combustion chambers, instead of the usual single chamber, is unique, and performs the function of securing perfect combustion not only of the fuel, but of all organic matter in the ore also. The result is absolutely sootless condensers and a smokeless stack. This feature removes at once one of the most annoying and fruitful sources of loss in the reduction of quicksilver ores.

While the Dennis furnace was designed primarily for quicksilver, it is claimed that it is equally adapted to the roasting of other ores. It shall succeed in doing away with our smoke



The Black Butte Mining Camp.

been. For some years it has been known that the Cascade and Calappin mountains contained in some districts large cinabar deposits, which have been worked somewhat, but it did not amount to much until the Black Butte Quicksilver Company obtained the properties now operated by them some five years ago, which now are controlled by Mr. W. R. Dennis, a metallurgist of many years' experience in this work. To say that the Black Butte mine bids fair to become the greatest quicksilver mine, is not unreasonable, when the vastness of the present ore bodies are considered, and the amount and richness of the ores now ready for treatment, through the 15,000 feet of development work which has been done. Specimens of the ore run from 30 to 70 per cent pure.

Mammoth Ore Bodies. The magnitude of the ore bodies cannot be appreciated until they are seen. The crest of a ridge rising 1750 feet above the level of the creek, has massive croppings continuously for a dis-

distance of 7500 feet. These croppings are all impregnated with cinabar. They appear as cliffs at times and great jutting rocks, but careful analysis along the line of the ledge, which follows the ridge crest, shows them to be cinabar ore. A vertical depth of more than 1600 feet may be had by driving an adit from the level of the present furnace. Above this adit would be backs of 2000 feet as the ledge dips at about 57 degrees from the horizontal.

The ores from the mine were treated for a time in a Scott 50-ton furnace, but the loss was so great and the expense so large that it was not a paying investment. In view of this fact Mr. Dennis has for years been working on a model of a new furnace, which with a moderate number of men, can turn out a large quantity of pure mercury. For

the heat on both sides. The heat in the ore tower is not permitted to run ad libitum through the ore, but is regulated in various zones at fixed relative temperatures, and is under remarkably perfect control of the operator. The arrangement of a series of primary and secondary combustion chambers, instead of the usual single chamber, is unique, and performs the function of securing perfect combustion not only of the fuel, but of all organic matter in the ore also. The result is absolutely sootless condensers and a smokeless stack. This feature removes at once one of the most annoying and fruitful sources of loss in the reduction of quicksilver ores.

While the Dennis furnace was designed primarily for quicksilver, it is claimed that it is equally adapted to the roasting of other ores. It shall succeed in doing away with our smoke

The Oregon Mineral Springs, near which the town of London is located, have been known for years to possess many healing and curative virtues, but like other natural charms they waited on the hand of man to make them available. Some two years ago plans were developed for the erection of a comfortable hotel, bath houses and other necessary buildings to have a resort for those who are suffering from the ailments of life. A comfortable hotel has been erected, which has not been large enough to fill the needs of the many travelers, so that a number of splendid tents have each year been erected under the shade of the magnificent fir trees which make a forest there. The bathing house is nicely equipped, and the grounds are finely kept.

The water has been found to possess a remarkable effect on persons troubled with rheumatism and stomach and kidney troubles seem to yield rapidly to their power, relief being obtained at

Our Great Health Resort.

LONDON—U. S. A.

To go to London usually means a trip across the pond, but to Oregonians it means a trip to Cottage Grove, and thence by stage across the hills and valleys to London, Oregon, a distance of some fifteen miles, where, had Ponce de Leon found the springs that there burst forth, he would surely have declared that he had found the spring that gave what was better than eternal youth—health.

The Oregon Mineral Springs, near which the town of London is located, have been known for years to possess many healing and curative virtues, but like other natural charms they waited on the hand of man to make them available. Some two years ago plans were developed for the erection of a comfortable hotel, bath houses and other necessary buildings to have a resort for those who are suffering from the ailments of life. A comfortable hotel has been erected, which has not been large enough to fill the needs of the many travelers, so that a number of splendid tents have each year been erected under the shade of the magnificent fir trees which make a forest there. The bathing house is nicely equipped, and the grounds are finely kept.

The water has been found to possess a remarkable effect on persons troubled with rheumatism and stomach and kidney troubles seem to yield rapidly to their power, relief being obtained at

most from the first use. The waters are a great tonic, containing as they do rich quantities of iron, and have in consequence brought such a demand for the water that the Oregon Mineral Springs Association has found it necessary to establish a large and modern bottling plant, with a carbonator, which, while a large plant, has been entirely insufficient to supply the demands, and which is taxing their utmost endeavors in order to keep pace with the demand for the water.

The management is fortunate in having a situation naturally ideal for a resort: the magnificent forests, the clear mountain streams, the clear pure air. The hunting and fishing facilities are unsurpassed. Every modern convenience is at hand: well equipped department store, postoffice, telephone, modern water and sewerage systems.

That Cottage Grove should be the entrance way to such a splendid health resort, means much to the town and vicinity. We have not only a delightful and restful place to recuperate, but we have the advantage of the renown which is gained by it, from each and every person who goes there, for to go once, is to go again.

Long years ago, an aged man named Ponce de Leon, sought far and near to find a spring. That youth might never be gone, but youth might be regained, and die in youth, and die in age.

But the spring is found at last. Come rich, come poor, come peasant, sage, Renew your vigor past.

The artist Nature lent his aid to beautify the spot. While man his best devices lend, the patron heeth not. The Spring is found in Oregon, At London I will be seen, Get off the train at Cottage Grove, Go twelve miles up the stream.

Then shake the dust from off your feet, The cares from off your mind, For these diseases flow their sent, Dyspepsia of all kind, Rheumatism here run a race, Old men their vigor find.

The waters here are very mild, So come the year around, The evanescent and their hazard wild, You need not hear their sound, Our doors are open all the time, Where'er disease is found.

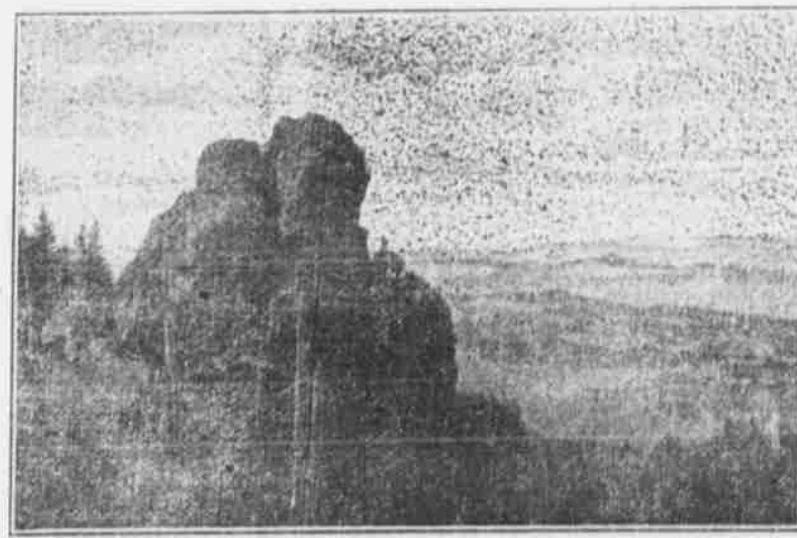
Is not this the ideal place to spend your summer days, For youth and pleasure mingle here, And old men find their way, The old cross young, the sick get well, And everybody sings, And all while in hearty thanks To London Mineral Springs.



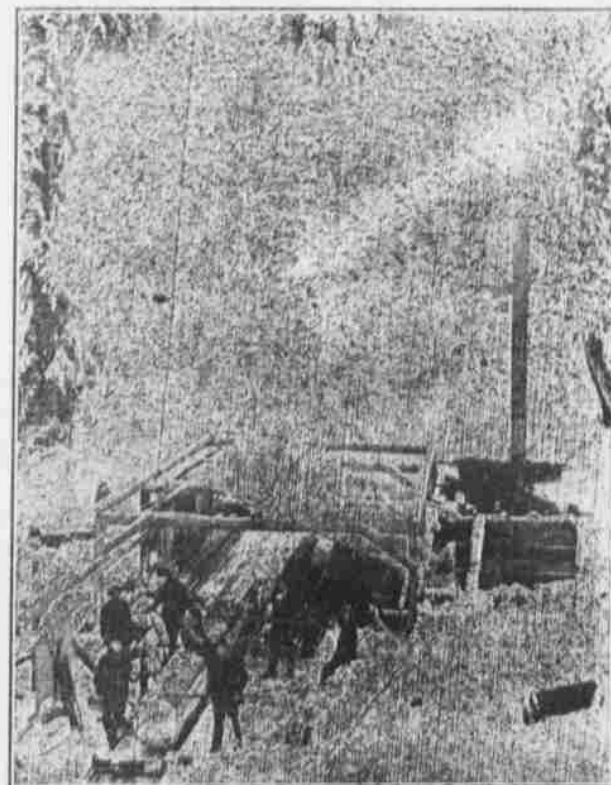
The Pride of Oregon—Mount Hood.



Scene on Row River.



Bohemia Scene.



Bohemia Sawmill.

THE WYNNE HARDWARE CO.

The Wynne Hardware Company is one of those companies built up entirely by young men in the full vigor of their youth, and whose entire energy is devoted to pushing ahead.

The present business was started by Mr. Harry Wynne in a little building now occupied by Linsell's meat shop, in March 16, 1901, where a meager stock of hardware was kept and tanning and plumbing carried on. The business was carried on in a way to attract customers, and to make them permanent buyers, and as a consequence the business grew to such an extent that on January 17, 1905, the present stock company was formed, which immediately moved into the commodious rooms now occupied, and which has become so crowded that the business needed more room, which resulted in the firm recently buying the store room next door, for a consideration of some \$1700. The annex is being used for the accommodation of heavy machinery.

The firm is arranging to handle not alone miners' supplies, but mining machinery, and expects to handle a large part of Bohemia's trade in that line.

THE GRAHAM HOTEL.

A. Graham is one of those men who believe that to make money one must spend it, and to that end, his first work in Cottage Grove, after the acquiring of the old brick hotel building, was to expend considerable money in its refitting, making of it a good hotel. Owing to the change in ownership of the hotel the desire for remodeling, Mr. Graham recently purchased the lease on the Central Hotel building, which he has just finished fixing up, having made a large office out of three rooms, installed a modern stairway, and electric lights, and modern bath and toilet facilities, besides repapering and painting the whole inside of the building, and refurnishing with new carpets, beds, mattresses and bedding of the best make. There are now some 30 first-class rooms, well heated and lighted, and one suite with bath. The cuisine is excellent, and Mr. Graham is having the distinction of having made the best hotel the town has ever enjoyed.

A FIRST-CLASS PLANING MILL.

One of the most needful industries in any town of life and activity is a planing mill, where windows, frames, doors, mouldings, turnings and house finishing lumber, etc., may be turned out, and Cottage Grove is particularly fortunate in having such an establishment in our town, operated by a thoroughly capable mill man, in the person of W. H. Abrams.

Mr. Abrams has had a lifetime of experience in his kind of work, and realizing the advantages and opportunities before him, some years ago opened the present plant, which has been increased from time to time. The mill in itself is a building 60 x 100, the engine room adjoining, 20 x 50, and a dry kiln installed in a separate building.

Mr. Abrams gives his personal supervision to all the work, doing much of it himself. In times of great activity he employs a number of men, and constantly has enough work on hand to employ several helpers. This past year work has been better than the previous year, and Mr. Abrams is looking for a still better year immediately before us.

202 Pounds of Yellow Metal.

A YEAR OF HARD WORK FOR THE SECURITIES COMPANY.

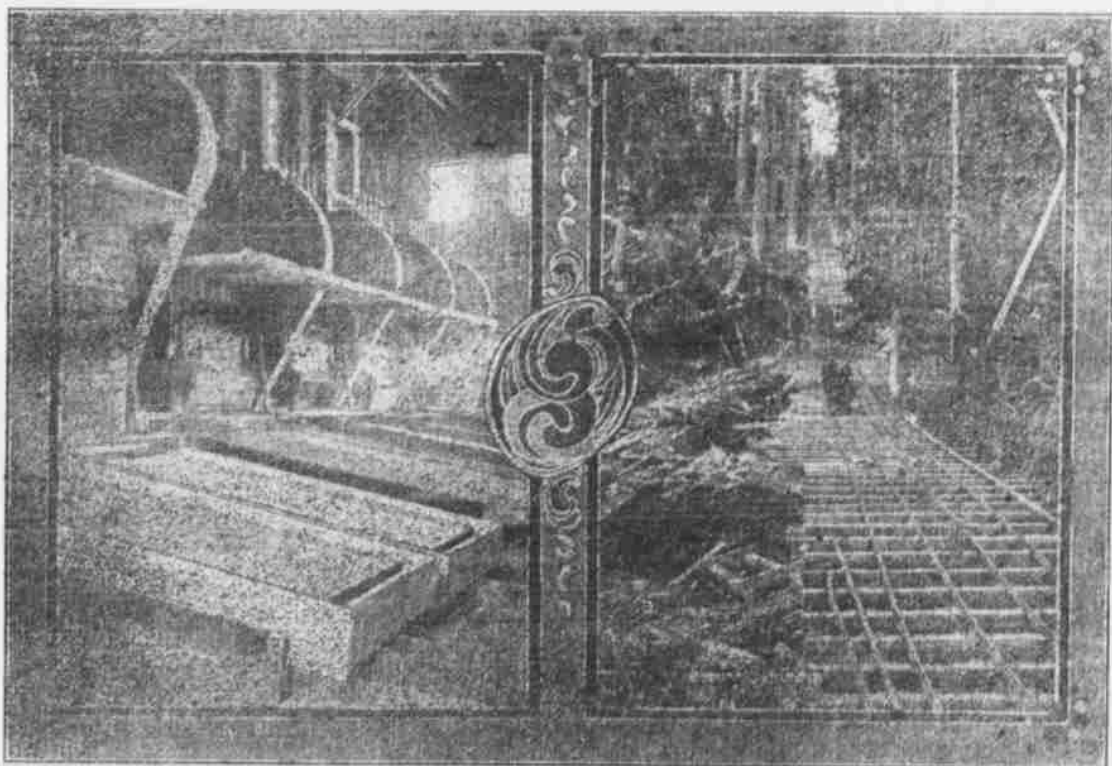
The Oregon Securities Company at the end of its year's work feels a just pride in the work accomplished, and trusts that in another year it will have a still greater showing. Foremost among the large mines of the Bohemia district, not alone for its large holdings, but because of the great amount of development work done, and the records of work done in past year, stand the Oregon Securities Company, a corporation owning the Helena group of claims, the Musick group and the Champion and Broadway group, which

operated only for eight months in the year on account of the heavy snows, which could only be obviated by expensive show sheds, which the company does not feel justified in building, nor will there be any call for these ores, as the mill can be run to capacity on the ores already developed in the Champion, which is the present source of supply, and which has been paid largely for the work done on them.

While a grade for a surface tramway has been constructed part way to the Helena, the further construction and equipment of such a line will depend entirely upon the future needs. The large territory opened up in the

operations from the sixth level to the surface, and while practically none of this ore has been treated at the mill, a large amount is broken out ready for use next summer.

In August of this year a rich strike was made while upraising between levels nine and six in the Champion, and from which ores have been taken which yielded during the month of October, although only a portion of the total stamps were used, 89 Troy pounds of gold, and in November 113 pounds, making a total production of 202 Troy pounds from this strike since October. The mill is being run on this ore continuously, and many rich returns are



Interior of Oregon Securities Co. Stamp Mill and Tramway to mill.

aggregate in all 55 claims, and some 800 acres of mineral bearing lands.

The work done during the past year has been largely development work. An electric tramway has been constructed from the Musick Mine to an upraise, from the main tunnel of the Champion, a distance of one and a quarter miles, for the purpose of economically transporting the ores of the Musick mine by tramway to the mouth of the upraise, and thence down the tunnel and surface cable tram to the mill for treatment. This line can be

operated only for eight months in the year on account of the heavy snows, which could only be obviated by expensive show sheds, which the company does not feel justified in building, nor will there be any call for these ores, as the mill can be run to capacity on the ores already developed in the Champion, which is the present source of supply, and which has been paid largely for the work done on them.

While a grade for a surface tramway has been constructed part way to the Helena, the further construction and equipment of such a line will depend entirely upon the future needs. The large territory opened up in the

operations from the sixth level to the surface, and while practically none of this ore has been treated at the mill, a large amount is broken out ready for use next summer.

In August of this year a rich strike was made while upraising between levels nine and six in the Champion, and from which ores have been taken which yielded during the month of October, although only a portion of the total stamps were used, 89 Troy pounds of gold, and in November 113 pounds, making a total production of 202 Troy pounds from this strike since October. The mill is being run on this ore continuously, and many rich returns are

expected. The policy of the manager is to continue the development in every way to increase the ore supply, and to make the mine a steady producer. The fact that such a quantity of gold has been produced in two months, and from the concentrates of which ore, much more value is yet to be extracted, tend to greatly encourage the miner and investor in mining property in Bohemia.