



Devoted to the Mining, Lumbering and Farming Interests of this Community.

VOL. VII

COTTAGE GROVE, LANE COUNTY, OREGON, WEDNESDAY, AUGUST 2, 1905.

NO. 27

## BOHEMIA MINING NOTES

### And General Mining News Gathered From Exchanges.

Sarah Kerr of Warren, Pennsylvania came down on the O. & S. E. Tuesday.

The Oregon Securities Company is getting into some very rich ore and is getting richer every yard. They are preparing for a heavy production.

The Vesuvius mill is running a full force both night and day, and the electric light plant and tramway are doing splendid work. The mine looks better every day, and E. J. Hard has every reason to be very much encouraged by the showings being made.

The O. & S. E. railroad is not only extending its line up to Wildwood, laying the ties and rails along the track already 2 1/2 miles, but we understand are going to push the grading right along. There are reports of overhauling the oil engine and cars to be in shape to do a good business.

### PLEASED WITH BOHEMIA

**F. H. COLPITT** of Albany, Oregon, an assayer, analytical chemist and consulting engineer of practical experience has been looking over the camp at Bohemia recently, and is interested in installing some new rock crushers that have only recently been invented, that are by far the best thing out in that line. He said some very good things about the district, and made a few remarks about some of the various properties, which might be interesting to some of our readers. Mr. Geo. W. Lloyd, manager of the Crystal Consolidated Company is evidently doing much to bring success to his company by honest and legitimate work. He is soon to let a contract for nearly 1000 feet of tunnel to open up the main and large ore body, following along the line of work already begun. The present indications are that the Oregon Securities Co. if continued under the present able management will have fine success. The ore now being milled although not using but a part of the 30-stamp mill already installed show much progress in getting along toward the larger and finer bodies of ore known to exist in their property. It is hoped that they will find it to their advantage to soon put the entire mill in operation.

The Vesuvius operated by Mr. F. J. Hard is making a wonderful showing in good ore bodies. They are running on stamps daily, the ore being conducted to the mill by a well constructed aerial tram system. After viewing the working and mill he was greatly pleased with the handling and business tact shown.

Mr. Colpitt thinks that the Bohemia camp has a great future if the work already begun is carried on along the same general lines, and expects to get back here to share in some of the prosperity.

Mrs. Homer Millard and son of Curran, California, are visiting her sister Mrs. John Medley.

One of the oldest pieces of iron known is in the possession of the Field Columbian museum. It was found between two marble columns in the temple of Artemis, in Magnesia. As this temple was erected B. C. 200, the iron is over 2,000 years old. It is a large product, with over one per cent slag, 0.061 per cent carbon, and 0.025 per cent phosphorus. It is red, short, and generally of poor quality.

An article from Tokyo says that the use of an iron of the lower house of the diet appointed to examine the draft of a new mining law has decided, by a vote of 11 to 4, to recommend the abolition of all distinctions of nationality regarding the ownership of mines, inasmuch as experience has proved that the participation of foreigners in Japanese industries is benefited. The Japanese need not fear competition either in methods or efficiency from any foreigners, if one may judge of the high character of the Japanese exhibit at the Exposition.

The Eddy corporation tax law, in so far as it affects mining corporations, is, if the plans outlined by a mass meeting of citizens in Hotel Sampter this week do not miscarry, a dead one. The meeting, which was held under the auspices of the Sampter district branch of the Oregon Miners' Association, was largely attended, not only by representative mining men from all parts of the Sampter camp, but by nearly all the prominent merchants and business men of the city. The concrete results of the meeting were the appointment of a committee of five to prepare resolutions embodying the sense of the meeting and the appointment of a finance committee. It was practically decided that an attempt at the forthcoming session of the legislature to repeal the Eddy law in toto would be doomed to failure. Therefore, an effort will be made by Representative A. P. Smith, assisted by a strong lobby of mining men, to amend the bill so as to exempt mining corporations from its taxation provision.

## BOHEMIA DISTRICT

### Its Discovery, Development and Great Future.

If Albert Somers, better known as Bohemia Johnson, the pioneer of Bohemia district, were alive today, he would marvel at the immense strides in development and the vast tonnage of commercial ore now in sight and being uncovered in the busy camp, where some forty years ago, his pick first revealed the glittering treasure of gold in those

From that time until the present, through all the succeeding years, prospecting has been engaged in, and year after year new veins have been found and their mineral wealth disclosed, until it became an assured fact that the district was a perfect network of mineral veins, carrying values of the more precious metals of gold, silver, copper and lead.

Most of the early prospectors in Bohemia were poorly equipped financially and had but crude tools for the work of development. Transportation was a heavy handicap and was over rough and almost impassable mountain trails, through heavy undergrowth and fallen timber, and and the wonder is the camp maintained its growth and kept expanding. The obstacles encountered were often disheartening, but the big mineral veins were most allur-

great bulk of values lay deep in the mountains and modern methods must be adopted to reap the golden harvest. Groups of claims were organized and capital sought from eastern moneyed men, which was soon forthcoming, and systematic development begun.

Bohemia is situated about 55 miles east of Cottage Grove in the Forest Reserve of the Cascade range at its junction with the Callapooias, the eastern half in Douglas and the western half in Lane county, the dividing line following the mountain peaks and saddles intervening.

Several thousand claims have been located in an area of 15 miles north and south and ten miles east and west and many of the prospects being developed will prove splendid mines.

All of this mineral zone is volcanic and eruptive, andesites predominating, and girdled with long and wide fissure veins heavily mineralized, the greater number paralleling the district northeast and southwest with many east and west contact ledges.

For economic mining the district has few equals and no superiors, the contour of the hills being precipitous with deep ravines intervening, thus affording great vertical depth through tunnel operations, the handling of ores by gravity trams and the complete drainage of steep working at little expense, doing away with expensive hoisting and pumping machinery incident to mining operations in many of the older districts of the Pacific Coast.

Bohemia is magnificently timbered and dozens of sparkling streams traverse its many canyons which can be at a minimum expense harnessed for generating electrical power.

The past two years have witnessed great changes for the betterment of conditions in Bohemia. Splendid mountain roads have been built and others have been surveyed and will be constructed next season.

The Oregon Securities company has now a most substantial wagon road the entire length of Champion canyon; the Crystal Consolidated has a model road to its holdings and Manager Hard has a broad highway for four miles down City canyon to the Oregon-Colorado holdings and a splendid pack trail from there to the Riverside group in Horse-heaven canyon. The main county roads and stage routes leading into the district have been put in good trim and afford comparatively easy access to the district, and the Oregon and Southeastern railroad now constructed and operated from Cottage Grove over half way to its destination in Bohemia is slowly but surely spanning the distance and perhaps before another year the iron horse will make the echos of the Bohemia hills from its terminal

in the district 20 1/2 miles from the gateway at Cottage Grove.

The district is supplied with ample postal facilities, having four offices: Mineral in the south end, Bonita in the north end, Orseco at the head of Champion basin and Bohemia on the east slope of Bohemia mountain at the head of City Creek.

The Cottage Grove and Bohemia telephone line supplies direct and quick communication with the outside world from all the principal points.

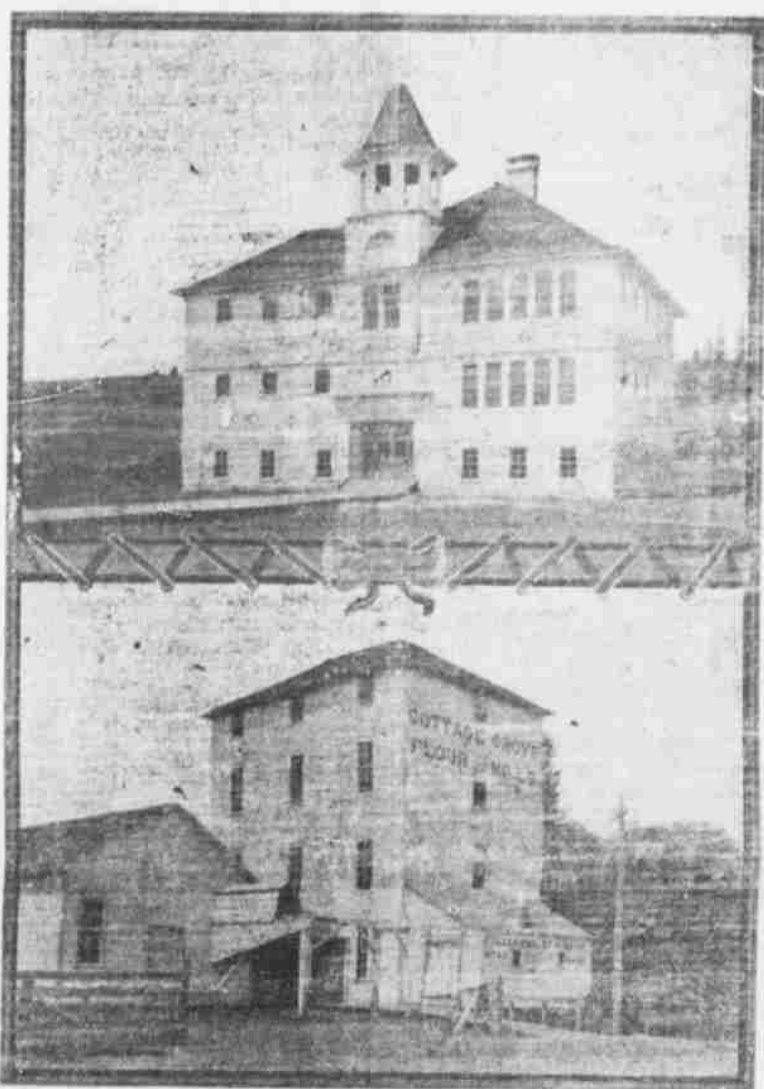
Large sums of money have been invested in reduction plants, electrical appliances and substantial development of the ore bodies, which have all increased in volume and as depth has been attained, and the coming season will inaugurate an output of precious metals that will be heralded throughout the mining world, and in fact the yield has already begun from several of the best developed mines.

Among the numerous fine properties in the district, several may be mentioned that will in the near future be active producers. The Oregon Securities, Vesuvius, Oregon-Colorado, Riverside, Crystal Consolidated, Grizzley, LeRoy, Hiawatha, North Fairview, Mayflower, Golden Slipper, Knott, Mineral King, Sunrise, Judson Rock, Golden Rule, Gold Hill and Bohemia, Star Consolidated, Great Eastern, Twin Rocks, Royal Flush, Pittsburg, Peckaboo, Morning Star, Four Montes, Diamond, Gold Cross, Syndicate, and a host of others that are fast coming to the front.

Between 1800 and 1840 the world's production of silver was about 4 to 1 in value, as compared with the production of gold. When in 1849 the new California and a few years later the Australian gold finds were made, the annual output of gold so increased that the yellow metal output was soon more than 3 to 1 in value, compared with silver output, and during this great change in relative production the commercial rates remained comparatively stable, due to the fact that the mints of the world took the precious metals and made them into currency.

Mrs. C. H. Burkholder and children have returned from a weeks visit to the fair at Portland. Mr. Curran of Cottage Grove with his daughter, also his niece, Miss Curran from Chillicothe, Mo. and other friends visited Vesuvius camp on Thursday and took lunch at the hospitable home of Mr. and Mrs. F. J. Hard.

Mrs. Welch will give a pupils recital Thursday evening, in which all of her pupils will participate. The program is too long to be given here, but you will enjoy the evening. Be sure to be on hand.



Public School and Flouring Mills, Cottage Grove.

rugged hills.

A short time after came Bird Farrier and Billy Sabin, and a little later Joseph Knott and companions made their way into that unexplored region and uncovered the gold bearing lode, which has since bore his name and which for many years, has been the lodestone that has attracted hundreds of prospectors to that great mineralized district.

ing and brought cheer and comfort to the hardy prospector.

Later on, roads were built, trails broken, machinery taken in and installed, and for a few years the cropings of some of the big veins were despoiled of their treasure and the yield of yellow metal taken out amounted to several fortunes to the lucky owners.

Then it was decided that the

## WELCH & WOODS

### HAVE

## Bathing Suits

### AND

## Barefoot Sandals

## We Will Clean Up

### Our spring and summer goods at actual wholesale price

Remnants and Odds and Ends in

Dry Goods, Mens and Boys Hats, Mens and Boys Clothing, Ladies Furnishings, Mens Furnishing Goods, Etc., Etc.

FOR BARGAINS COME AND SEE US

## Garman, Hemenway Co.,

LEADERS IN MERCHANDISING