

# SUPPLEMENT TO BOHEMIA NUGGET

VOL. IV.

COTTAGE GROVE, OREGON, OCTOBER 23, 1903.

NO. 39.

## Cottage Grove, Lane County, Oregon

COTTAGE GROVE is in Lane county and one of the very busiest towns in the whole Willamette valley. It is situated on the coast fork of the famous Willamette river, 144 miles south from Portland on the main line of the Southern Pacific railroad running between Portland and San Francisco. It has several good church edifices and schools, has a population of 2000. It was credited with much less in the last United States census, but it is growing fast; in fact, by leaps and bounds, and hardly a limit can be placed on its future growth, for it seems to be its destiny to be the leading city in Central Oregon, so fast is it becoming a most important point on account of the magnitude of the lumbering and mining interests which center here.

The town is planted with a view to its certain increase in size which may be evidenced by the fact that over one hundred residences will be completed this fall of 1903, and it is all a steady, healthy growth, no boom whatever.

The town is incorporated, has mayor and common council. It is lighted by electricity, a large plant being in operation.

Cottage Grove has also a water system.

Cottage Grove is completely surrounded by vast forests of fir and cedar timber. Lane county extends from the Cascade range of mountains on the east to the Pacific ocean on the west, giving it a length of 120 miles and an average width of fifty miles. The great Willamette river flows through Lane county. The foothill land makes excellent pasturage. The bottom lands are of the most productive soil in the great West. The foothill country is peculiarly adapted for raising stock. The bottom lands give the best of midsummer grazing while the hill lands are green in early spring and late fall. The demand for cattle, sheep, goats and hogs is great and the best market prices are obtained. The reason will be apparent as we proceed and you find that here in Cottage Grove are gold mines besides those that are being mined.

Farming in this section can be conducted on a highly profitable basis. First, the price of land. Grazing timber land can be got for \$2.50 to \$5 per acre, timber land, \$10 to \$25 per acre, hill lands, \$5 to \$10, and the best improved land in the bottoms runs from \$15 to \$40 per acre; that is for the best, and the market for the products is right at home without shipment. There are

the stupendous acreage of standing timber. It is said officially that Lane county has more standing timber than any county on the Pacific coast, and

there is here, see the mining industries, the number who are dependent on home products and how small the supply in comparison to the demand.

and operating over seven hundred acres of mineralized ground in the center of the camp. This company alone is spending a quarter of a million dollars in the improvement of its holdings, including the erection of a 500-horsepower electric plant. Every company in the district will make extensive im-

provement necessitating large outlays of money and the employment of hundreds of men, and this is only the beginning, for the district is ever widening as this great mineral zone is explored and new strikes are constantly being made. A number of mills and concentration plants are to be installed in Bohemia this year to work the vast tonnage of ore already extracted and the immense bodies now being blocked out and uncovered. So far as superficially prospected, the great Bohemia district now covers an area of ten square miles, the whole section being gridironed with a network of mineral bearing veins, the principal metals being gold, silver, copper, and lead, while nearly all of nature's mineral products

are to be found in this district. The upper zones of the mines are now being milled, the lower zones have been and are fast being developed with men and capital.

The Oregon & Southeastern railroad are building a road from Cottage Grove to Bohemia. Seventeen miles are now finished and an extension under way for twenty-seven miles further. They are constructing new wagon roads, and doing some great engineering work, hundreds of men being engaged. There are some skillful heads guiding this vast enterprise, and the work being done will be a revelation to the income from the East. The great electric power and transmission plant of 500 horsepower will be used for hoisting the ore at the mines, lighting and for transportation use on the roads now under construction in the mining region. It is a great undertaking bearing successful accomplishment.

Another mining enterprise is the Black Bluff Cinnabar mine, located fifteen miles southwest of Cottage Grove, which employ a large force of men and produce great quantities of quicksilver, the capacity of this plant is being greatly increased.

There is yet another mine—and a point mine at that; extensive deposits of paint pigment or clay has been found extending over an area of thirty-three acres. These deposits or strata

ly, a revenue of \$40,000 from traffic here; 20,000 tons of freight in and out. These are some facts that stagger one—all from a little community of barely two thousand people. What grit! What hustle! What energy! and what a chance for others.

Cottage Grove wants ten times the number that is already here, to either go into farming, lumbering, factories, stock raising, or anything you are adapted for.

Stock raising is a most important factor of the industries of this county. Stock do well on the range the year round and require but little or any feeding as also horses, sheep and goats. The fact that the winters are mild and that the native grasses keep green nearly all the year makes this section a splendid field for the raising of all kinds of stock. The many streams that course the ranges fed from springs and melting snow supply an abundance of water for all stock in the driest of seasons. Many of the stock men have long been improving their herds with imported pure-breds and now the finest and best breeds are represented on the ranges. Most of our farmers carry on dairying in a small way. We want a creamery in this vicinity. There is no better field for the products of the dairy than here. Thousands of non-producers toil in the mines, mills, and logging camps and the highest cash



VIEW ON RIVER STREET, COTTAGE GROVE, OREGON. Showing the Pacific Lumber Company's Store, Shops, and Office Buildings opposite the Store, with the Residence of T. K. Campbell, President of the Company in the Distance.

estimate is twenty billions of feet, something the average mind cannot grasp at, and right here it may be stated that at Cottage Grove we are centrally located right in the midst of what is known as one-third of the entire timber region of Oregon.

There are several large saw mills—big lumber companies—but there is room for a score more of them and plenty of room. As a fact, it may be stated that a well managed saw mill can clear 50 per cent on their investment, this said by experts to be underestimated, and let it be clearly understood that the demand for lumber keeps increasing. The raw material is here, but we want the finished product. This is a great opportunity to saw mill men.

There are now five saw mills in and



Methodist Episcopal Church, Cottage Grove.



Residence of Dr. George Walcott, Cottage Grove.



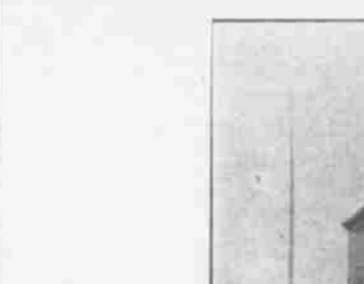
Residence of Dr. B. R. Job, Cottage Grove.



Residence of Senator R. M. Veatch, Cottage Grove.



Residence of Dr. George Walcott, Cottage Grove.



Residence of Dr. B. R. Job, Cottage Grove.



PUBLIC SCHOOL BUILDING, COTTAGE GROVE, OREGON.



Residences of State Game Warden J. W. Baker and Mrs. J. C. Stouffer, respectively, Cottage Grove.



Residence of B. Linch, one of the Leading Merchants of Cottage Grove.



Residence of Hon. Darwin Bristow, Cottage Grove.

Mining is one of the most important of the main, great industries of this section. There are over two thousand claims of record. The mines and kindred companies are considered to be the finest properties on the whole of the Pacific coast; large sums of money have been and are being expended in this industry for modern machinery and improved methods to extract the precious metals from the vast mineral deposits in the near-by mountains. There are two great mining districts in Lane county—Bohemia and Blue River. These mining camps are in the Cascade and Calapoosia ranges and separated by a distance of but twenty miles. In both the experimental stages have passed and the future is assured. Our purpose is now to deal with Bohemia. It is located thirty-five miles southeast of Cottage Grove in the Cascade and Calapoosia ranges, partly in Lane and Douglas counties, as the county line crosses the higher peaks of the district. There are now twenty large corporations operating in this district, principal of which is the Oregon Securities Company, a capital of \$5,000,000 owning

of paint clay are there to an as yet unknown depth. They are proving to be of good quality, brilliant and durable. A company has been formed and capitalized to work the mine and place it on the market.

All this capital, energy and skill, that is being put into enterprises in and around Cottage Grove goes to show that there are abundant openings for any number of men with both large and small capital, and to go through this busy hive of industry in Cottage Grove will enlighten you. There are processions of two-wheeled carts each with immense piles reared on one end

and trailing, each from 30 to 140 feet long. They are being got by the Pacific Lumber Company for use in different sections—piling dressed ready to be driven into the earth, of immense length and straight as a rule, shipped for hundreds of miles, simply because it's here where the supply is to be had. Any man on business intent and looking at Cottage Grove and the enterprises that are under way and others being developed, would soon decide that it was the place to stay and realize a share of the great prosperity that abounds here.

Eighteen thousand passengers coming in and going out of this town year-



Cottage Grove Flour Mills, Cottage Grove.

price for all farm produce is gladly paid at the farmer's own door. The demand is long and steady and will last for many years to come.

This section of south Lane county at the head of the Willamette valley is especially adapted to fruit culture, the varieties that thrive best here are prunes, cherries, apples, pears, grapes, quinces, and peaches, while berries of every variety reach perfection in growth and flavor. The foothills and high bottom lands seem to be the best for these products.

When you remember the number of men engaged on the outside of Cottage Grove in mining, lumbering, road building, prospecting, etc., all of whom have to be fed from this town, supplies from here of all kinds, that no matter how many may locate there will still be ample room for more to satisfy the present population and the growth is much more rapid than the producer from the land can supply.

These are the simple, truthful facts. The men who come here to engage in business will have to hustle; there are no drones around, but the hustle will be a big dividend payer. The greatest lumbering district is right here. The greatest gold-bearing district is here that is in the state and one of the greatest in the United States, and it will not be long before that will be generally conceded. Therefore, with all these most exceptional opportunities at hand, small wonder will it be when you are asked "Where are you going?" you answer "I am going direct to Cottage Grove, Lane county, Oregon."

It might be well to state that the hotel accommodations in this very busy town are at present adequate to take care of all visitors very satisfactorily. Taking that in connection with the good transportation facilities, the visitor who comes with the intention of looking over the ground will find his comforts well taken care of and treated courteously by the board of trade and other officials connected with Cottage Grove.



TIMBER SCENE IN LANE COUNTY, OREGON, SHOWING A SKIDWAY ON WHICH TO TRANSPORT LOGS.



STREET SCENE IN COTTAGE GROVE, OREGON.

One that is not surpassed by any city in the United States. The water is obtained at the nearest hot springs, brought to the city by mains, and distributed to its absolute purity to each household at a cost of 25 cents per month. The city owns the system.

The population of this highly progressive town has doubled within the last three years.

There is an energetic board of trade—men who take an active interest in the welfare and upbuilding of their city.

Two really excellent newspapers are published weekly in Cottage Grove—the Bohemia Nugget, and the Lane County Leader, here again are two influential forces working for the town's progress. With a board of trade and two popular local journals working harmoniously together, all for the building up of a community, small wonder if they succeed—which assuredly they do, and they are a shining example to many towns in the Willamette valley to go and do likewise.

There are several industries in operation but what a lot of opportunities there are here! You may learn a few as you read on.

at your very door. The great need is for small farms—and a lot of them; they would be here little gold mine producers. One of the great sources of wealth is



Showing First National Bank of Cottage Grove and Store Building of the General Merchandise Firm of Eakin & Bristow, Wall and River Streets.

at your very door. The great need is for small farms—and a lot of them; they would be here little gold mine producers. One of the great sources of wealth is



VIEW OF THE MUSICK MINE, BOHEMIA, NEAR COTTAGE GROVE, NOW ABSORBED BY THE OREGON SECURITIES COMPANY.

about Cottage Grove which are daily running to their full capacity and shipping the products to the eastern markets. Over one thousand men are now employed in the logging camps near here and the lumbering business is but in its infancy.

Among the many enterprises that would pay—and pay well—are raising sheep and Angora goats—these are highly profitable—and cattle raising generally.

One of the great needs here is a good steam laundry; it would be a success from the start.

Saw mills are wanted, sash and door factory, soap factory, wooden ware factory, cold storage plant. Poultry raising is a big paying industry. A starch factory.

Dairying on a large scale would be highly successful, or on a small scale either. There are really openings for enterprises all along the line of industries that any town would want and when you consider what a home market