

University of Oregon

ALL UP-TO-DATE BUSINESS MEN OF COTTAGE GROVE ADVERTISE IN THE NUGGET.

BOHEMIA NUGGET

THE NUGGET JOB OFFICE TURNS OUT GOOD WORK AT MOST REASONABLE PRICES.

Devoted to the Mining, Lumbering and Farming Interests of this Community, to Good Government, and Hustling for a Grub Stake.

VOL. III

Cottage Grove, Oregon, Friday, December 6, 1901.

NO. 47

PROFESSIONAL.

J. E. YOUNG

Attorney-at-Law * * *
Office on Main street, West Side—
COTTAGE GROVE, ORE.

J. C. JOHNSON and F. G. EBY-

Attorneys and Counselors-at-Law
Special attention given to Mining, Corporation and Steamship Law.
Office over Garman & Hemenway's store,
COTTAGE GROVE, ORE.

J. S. MEDLEY

Attorney-at-Law * * *
Office on Main street—
COTTAGE GROVE, ORE.

JEROME KNOX

Attorney-at-Law * * *
Prompt attention paid to Mining Business.
COTTAGE GROVE, ORE.

HELMER W. THOMPSON CHAS. A. HARDY.

THOMPSON & HARDY
Attorneys and Counselors-at-Law
Special attention given to the law of Mines.
EUGENE, ORE.

L. T. HARRIS

Attorney and Counselor-at-Law
Special attention given to the law of Mines.
First National Bank Building,
EUGENE, ORE.

Mrs. Katherine Schlect, M. D.

Diseases of Women and Children
COTTAGE GROVE, ORE.

W. H. ROBINSON

—PRACTICING PHYSICIAN—
Office and residence on River street, near Wall.
COTTAGE GROVE, — — — OREGON.

BUSINESS.

J. W. BENTLY,

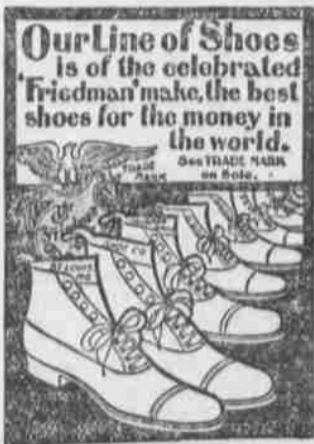
The practical Boot and Shoe Maker, located one door west of the Imperial Hotel. Repairing neatly done.

Satisfaction Guaranteed.

BARKER & PERMAN
—PROPRIETORS OF—
THE EXCHANGE
—DEALERS IN FINE—
WINES, LIQUORS, CIGARS.
Main street, Cottage Grove, Ore.

H. C. MADSEN,

WATCHMAKER.
Repairing at reasonable charges.
All work guaranteed first-class.
Watches, Clocks and Jewelry at Lowest Prices.
COTTAGE GROVE, ORE.



A complete line always in stock At LURCH'S.

Common Rough Lumber, \$6 per M. at BOOTH-KELLY Mills, SAGINAW, OR.

LADIES' GOLD WATCH FREE.
With each cash purchase of one dollar's worth of goods we give you a ticket for our annual drawing to take place January 1st, 1902. The first prize will be a ladies' Gold Watch.
EAKIN & BRISTOW.
Fine residences, choice lots, business blocks for sale Jerome Knox & Co.

KEEP YOUR EYE

on OUR STOCK of

HOLLIDAY GOODS!

EAKIN & BRISTOW.

Garman & Hemenway

DEALERS IN MERCHANDIZING

Our Store is where the Largest Line of Holiday Goods can be found. Our Assortment is Complete. You can find what you want at Our Store.

DOLLS	SMOKING SETS	PHOTOGRAPH BOXES
TOYS	TOILET GOODS	GLOVE AND TIE CASES
ALBUMS	JEWEL CASES	FANCY BOX PAPER
DRESSING CASES	COLLAR & CUFF BOXES	CELLULOID GOODS
SHELL BOXES	VENETIAN CANDELABRA	AUTOGRAPH ALBUMS
SCRAP ALBUMS	JUVENILE BOOKS	POEMS
VASES	NECK TIES	HANDKERCHIEFS
SILK MUFFLERS	JEWELRY	FANCY TABLE COVERS
LINEN GOODS	VELVET SLIPPERS	FANCY SUSPENDERS

Buy from us while our stock is complete, prices low.

KNOWLEDGE IS WEALTH!

Do you know

That a Railroad is being constructed from Cottage Grove to the Bohemia Mining District through one of the finest timber belts on the Pacific Coast?

Do you know that the ore now being transported by wagon from the Bohemia Mining District to Cottage Grove is the same character that made Cripple Creek famous?

Do you know that this ore from the Helena Consolidated Mine contains values from Four to Eight Hundred Dollars per ton, and is being shipped to the Omaha Smelters through Long & Bingham's warehouse.

Do you know that the present population of Cottage Grove will double in the next eighteen months?

Do you know that the fine, high, slightly tract of land adjoining Cottage Grove (formerly owned by G. W. Long) has been platted in lots and acreage and is being offered on terms that will enable you to double on your investment in a very short time?

The above is a few of the facts with which we can make you acquainted if you will call upon us or write.

Address all communications to

LONG & BINGHAM,
P. O. BOX 8, COTTAGE GROVE, OREGON.

A RAILROAD TO BOHEMIA Means the Shipment of Much Ore to Proposed Smelter at Portland.

Oregonian Dec. 2.

I. H. Bingham of this city, who is interested extensively in the Bohemia quartz mines, has just returned from there, after spending several days among the camps. He predicts lively times in that portion of Lane county on the completion of the railroad from Cottage Grove. Right-of-way men are now within six miles of Champion Basin, the proposed terminus, he said, and as soon as the various deals are closed he expects grading to begin. Some little delay is anticipated in getting through a portion of the forest reserve, and an attempt is being made to have three townships restored to the public domain on account of their value in minerals.

The Musick, Star and Helena mines, Mr. Bingham says, are to be tapped by a series of long tunnels from the Basin. The one connecting with the Helena is to be 2500 feet long and through this ore is to be run for shipment to the proposed smelter at Portland. The building of this 37 miles of railroad from Cottage Grove to the mines will therefore hasten the erection of a smelter, as the ore from the Helena mine is now hauled by wagon to Cottage Grove and shipped in carload lots to Omaha, going through this city.

A large amount of base ore that cannot be treated by the stamps exists in the Bohemia district, Mr. Bingham says, and a smelter will be needed in Portland to treat it.

The proposed railroad from Cottage Grove will pass through a well-settled country for the first 20 miles, and, after that, through heavy timber, which will be thus rendered available for market. A light, uniform grade has been found by the surveyors up Row River, Frank Brass and Champion creeks. A new telephone line is to be in operation between Cottage Grove and Champion Basin by December 15.

The season has thus far been very mild in that vicinity, no snow having yet fallen near the mines, and the stage road is in very fair condition. Provisions for the winter have already been hauled into camp. The 10-stamp mill on the Helena mine will be worked day and night, all through the year.

DUTY REWARDED.

Chas. F. Charles, the W. F. & Co's messenger who was the hero of the Cottage Grove hold-up on the S. P. Co's lines about one month ago has been well rewarded by the company for his devotion to duty. Shortly after the hold-up he was given a transfer he desired to a run out of San Francisco and moved there with his family from Portland. Last Thursday he was called into the office of Wells-Fargo & Co., in San Francisco and J. J. Valentine presented Charles for the company with a beautiful engraved medal and a check for \$1000 as a testimonial of the corporation's appreciation for his brave deed in protecting their property from the assaults of the train robbers. In receiving the gift Charles, in his own modest way said he did nothing more than his duty when he stood by the defense of the company's treasure and refused to comply with the demands of the train robbers.—Tidings.

PARLOR ORGAN FOR SALE.

The Knights of Pythias have a second-hand parlor organ for sale which is in good condition. For information apply to Ben Lurch, J. S. Medley or Dr. Wall. Those diamonds at H. C. Madsen are beauties. Call and see them.

POINTERS FOR THE PROSPECTOR.

Little Things That Every Seeker for Mines Should Know.

The success of the prospectors depend upon a close application to his calling, economy in living, and a careful study of the minerals and the country formation. Science is not essential to the successful prospector, but he ought to be able to determine the nature of the more common ores in order to work intelligently. Those that should be studied to some degree are gold, silver, lead, iron and copper. Each of these when scratched with a knife or other instrument will expose a streak of bright metal and to determine the character of the ore, if not the value, is of much importance to the prospector. However, many men, wholly unformed have met with success.

Geology is better learned in field work than from books if the prospector is observing and analyzes the different rocks which he may discover. To do this a few chemicals or acids are needed, the use of which he may learn in one day with the aid of a proper instructor.

Every man knows granite from porphyry or lime from quartz. Feldspar is nearly like quartz, and may be determined from quartz by a smooth surface when taken from a vein. Tale is a soft, slippery rock, something like mica, or more like packed clay.

Calcite, subject to an acid test, will dissolve or effervesce, and is an element of lime.

Dolomite or carbonate of lime and magnesia, resembles calcite. It is a character of limestone.

Gypsum is a sulphate of lime and is difficult to determine, from its hardness. It may be scratched by the finger nail, and it will not scratch copper.

Garnets are usually found near copper; they are of a reddish color and rather tend to be in cubes in the rock.—Ex.

BAKER & JOHNSON,

Successor to B. F. PHILLIPS,
—DEALERS IN—

Groceries, Flour and Feed.

All kinds of Produce bought at the highest market values.

Call and get acquainted with us. We shall be pleased at all times to quote you prices upon all lines handled by us, whether you buy or not.

Our Stock is New, Neat and Clean, and having had years of experience in business, we assure you the very best goods the market affords, and the lowest possible prices.

Remember the place: Phillips' old stand, Cottage Grove, Ore.

PIONEER WHITE LEAD

Is Absolutely PURE, and will OUTWEAR all other Leads.

If your local dealer does not carry it write to us and we will see that you get it.

W. P. Fuller & Co.
PORTLAND, OREGON.

Read the Bohemia Nugget.