

EVENTS *from*

made sure Santa and Mrs. Clause arrived safely. All the while, members of the faith community donated their time to serve soup and warm beverages.

"I would like to thank the families and significant others who worked tirelessly in support of the event coordinators," said Neigh. "Also, the City of Cottage Grove and staff who went above and beyond and the local businesses and nonprofits who donated their time, money, heaters and decorations."

Some 2,000 people or more were estimated to have attended the event. Event Coordinator Shane May shared that 1,600 bowls of soup and more than 30 gallons of hot beverages were handed out, with hundreds of children getting their chance to visit Santa and Mrs. Clause or write letters at the coloring station.

"And one of my favorite stats: we've found zero negativity on social media," he posted. "Matter of fact, quite the opposite."

Organizers are looking forward to making the event an annual tradition in Cottage Grove due to the success of this year's launch.

"It really was one of the most delightful community events I've ever been to or been part of, especially in the past few years," said community member Samantha Duncan in comments to organizers. "This was a huge undertaking and a ton of work for you all, and I don't think it could have gone any better, especially for the first time. It was just what this community needed."

Meanwhile, the Western Oregon Exposition, located by the Cottage Grove Speedway, reported another successful inaugural launch on the other side of town.

"We were very pleased with the turnout," said WOE board member Alice

Nowicki.

Christmas at the WOE, though relatively smaller than the Bohemia Park event, spread over four days, offering shopping with several local vendors, food and drink, photos with Santa, a live nativity scene with locally-borrowed animals, appearances from Disney's Frozen princesses Elsa and Anna and different musical performances each night.

In addition, the event collected two barrels of food and \$165 in cash donations to be distributed to local nonprofit Community Sharing.

The idea for Christmas at the WOE began after the Village Green announced it would not hold its annual lighting event in its garden. The Village Green has recently changed owners and is likely to lose its famous garden in the new construction process.

"We just thought that the community could have another event," said Nowicki, who also a key organizer of the WOE event. "Just to give another opportunity for more activity in the community. And we went from there."

A handful of people and organizations came together to make the event possible, including area granges and a generous donation of Christmas lighting and decorations from area resident Duane Taddei.

In all, 25 vendors took part in the event, many of whom reported selling out.

"They all had really remarkable sales," said Nowicki.

As with the Bohemia Park event, organizers of Christmas at the WOE are convinced that this year's success will translate into "bigger and better" future events.

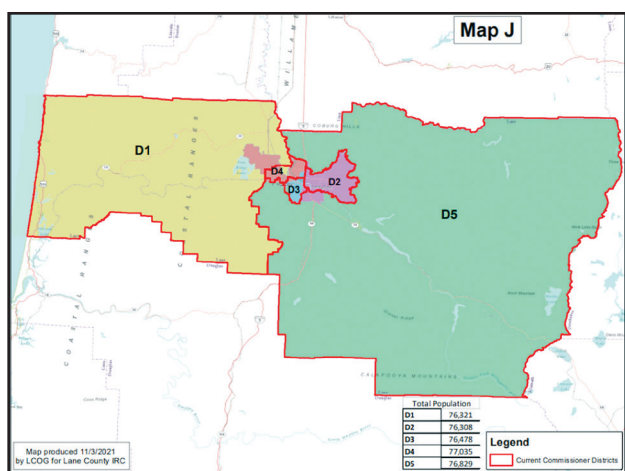
"If we can do it, it will continue on," Nowicki said. "Our goal was to give people Christmas memories and I think we did that."

For more photos of the events, see page A9.

BOUNDARY *from A1*

gene and Springfield. As the population growth in the county is concentrated within the Urban Growth Boundary, the IRC also had to work to present options that met — as closely as possible — to the Charter description.

As outlined in a summary by the IRC, the selected map strives to unify the River Road and Santa Clara neighborhoods. It places unincorporated portions of the River Road and Santa Clara neighborhoods in a commissioner district which represents other unincorporated areas.



The new map was selected by county commissioners in a 3-2 vote on Dec. 1.

Buch and contains a population of 76,829, a .31 percent variance above the average. It is the largest district in terms of square mileage.

The Lane County Charter describes commissioner districts that are "generally comprised" of Lane County within and outside of the metropolitan areas of Eu-

borhoods. It also utilizes the natural geographic boundary of the Willamette River to the East of the River Road and Santa Clara areas and the railroad tracks to the west that cut

AT&T internet

FEEL THE SPEED, EVEN AT PEAK TIMES.

- Get strong, fast Wi-Fi to work and play throughout your home.*
- No annual contract.
- Power multiple devices at once—everyone can enjoy their own screen.
- Over 99% reliability.

AT&T INTERNET 100 \$45

Contact your local DIRECTV dealer **888-486-0359**

Territorial Seed Company

Since 1979

- The Northwest's Finest Gardening Seed
- Flowers, Herbs, & Shrubs
- Vegetable Transplants
- Fruit Trees

20 Palmer Ave. Cottage Grove (541) 942-0510

The Delightful Gift

- 4 Butcher's Cut Top Sirloins (5 oz.)
- 4 Filet Mignon Burgers (5.3 oz.)
- 4 Boneless Chicken Breasts (1 lb. pkg.)
- 4 Gourmet Jumbo Franks (3 oz.)
- 4 Individual Scalloped Potatoes (3.8 oz.)
- 4 Caramel Apple Tartlets (4 oz.)
- 1 jar Signature Seasoning (3.1 oz. jar)
- 8 **FREE** Filet Mignon Burgers (5.3 oz.)

Get 8 PureGround™ Filet Mignon Burgers FREE

AMERICA'S ORIGINAL BUTCHER **OMAHA STEAKS** SINCE 1917

ORDER NOW! **1.877.890.0182** ask for 65658LQM
OmahaSteaks.com/TheGift1098

Voted Best Senior Living Community in South Lane County!

MAGNOLIA GARDENS MEMORY CARE

Our caring staff and management team are exceptional! They've worked hard to make our memory care extraordinary and to ensure that our residents get the best in care.

Here's just a few things that make us the best:

- Latest technology specifically designed to serve memory care residents
- Secure outdoor garden & relaxation area
- Sensory gardens & quiet common areas
- Lots of windows for natural light
- Personal furnishings and personal details
- Home-like environment with safety features
- 24-hour on-site care staff
- 3 delicious meals & snacks, served daily
- Life Enrichment Programs
- Large private rooms & bathrooms
- Medication management
- Weekly housekeeping/linen service
- Music therapy
- Wi-Fi and utilities
- Laundry

Full-service Memory Care with 24/7 immediate placement for urgent admissions.

Call **541-942-0054** for more information or to schedule a tour!

1425 Daugherty Ave., Cottage Grove, OR 97424 • MagnoliaGardensSL.com

off transportation links from the River Road and Santa Clara areas to the Coburg Road and Bethel areas.

The new map is also intended to unify the Bethel School District within one commissioner district and to maintain Districts 1 and 5 as primarily outside of Eugene and Springfield city limits; excepting the River Road and Santa Clara neighborhoods, which are placed in District 1.

The Churchill region which was placed in Dis-

trict 5 in the 2011 maps and remains in District 5 in this map.

The new district boundaries — along with any other political boundary changes from governments — will be provided to the Lane County Elections Office so that ballot information can be updated by the Jan. 31, 2022, deadline.

The selected map can be viewed at bit.ly/LaneMapJ.

Information about the IRC can be found at www.LaneCountyOR.gov/IRC.

MARTINEZ YARD SERVICES, LLC

- Property Cleanup
- Yard Service
- Moss Removal
- Pressure Washing
- Gutter Cleaning
- Brush Removal
- Bark Installation
- And Much More

Serving Cottage Grove, Creswell, Lowell, Dexter, Pleasant Hill, Eugene, Springfield & Junction City

FRANCISCO MARTINEZ, OWNER

(541) 579-0454 • Call Today!

Anytime. Anywhere. Any day...

Matt Bjornn, Agent
Bus: 541-942-2623
www.bjornninsurance.com

That's when you can count on State Farm®.

I know life doesn't come with a schedule. That's why at State Farm you can always count on me for whatever you need – 24/7, 365. **GET TO A BETTER STATE™. CALL ME TODAY.**

State Farm™

1101198.1 State Farm, Home Office, Bloomington, IL

PC GARAGE

SALES, SERVICE & REPAIRS

711 E. Main Street | Cottage Grove
541-649-1073 | www.pcgargageoregon.com

Complete tech, networking, security and IT solutions for your home or business.

NOW ACCEPTING NEW PATIENTS

1445 N Gateway Blvd
Cottage Grove, OR 97424

Contact our New Patient Coordinator at **541.640.7625**

nova PRIMARY CARE
Your Partners in Wellness

NovaHealthPrimaryCare.com

What's Rotary?

We focus our time, energy, and efforts on service projects encompassing:

Local Projects: High School Scholarships, Bike Helmets for Lincoln Middle School, Literacy, Crousel Wheelchair Space, Aquatic Center Mural, downtown Bike Lockers and Playground Equipment for Coiner Park

Global Projects: Thai Library Project, Clean Water in Central America

Become a member today.

Contact Karol Kuhn Simons
rotary424cg@gmail.com

Service Above Self

FREE BOSCH WIPER BLADES ON ANY SERVICE OF \$100⁰⁰ OR MORE

HAR HUDDLE
AUTOMOTIVE REPAIR
541-942-2521

80408 Delight Valley School Road, Cottage Grove, OR 97424
www.huddleautomotive.com

EVERYONE DESERVES A GREAT SMILE!

CALL TODAY TO SCHEDULE YOUR INITIAL CONSULTATION • 541.686.1732

THORNTON Orthodontics

EUGENE 622 E. 22nd Ave Suite C 541.686.1732
CRESWELL 195 Melton Rd. 541.686.1732
or visit us at www.thornton-ortho.com

TURNING 65 AND NEED HELP WITH YOUR MEDICARE CHOICES?

Call Paul to help simplify the complicated.

541-517-7362

Paul Henrichs ~ Independent Agent
coverage4oregon@gmail.com