

Amber Waves

by Dave T. Phipps



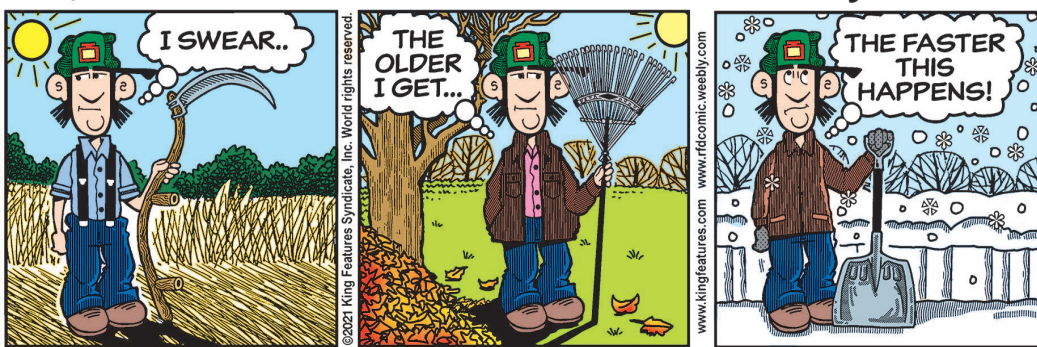
Out on a Limb

by Gary Kopervas



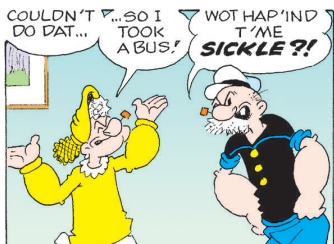
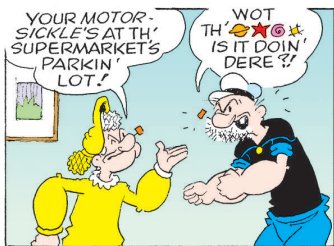
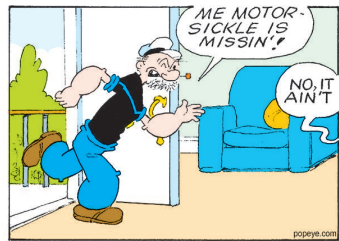
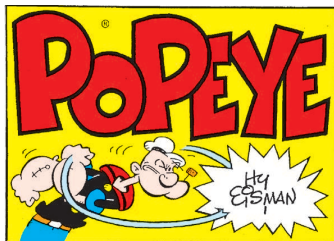
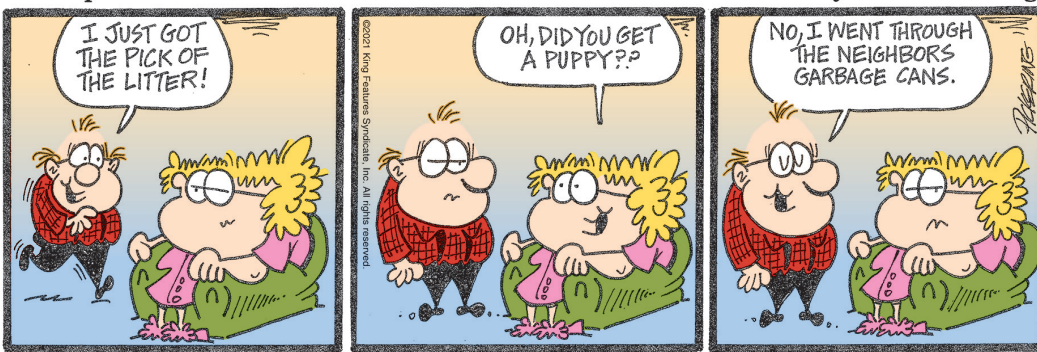
R.F.D.

by Mike Marland



The Spats

by Jeff Pickering



Just Like Cats & Dogs

by Dave T. Phipps



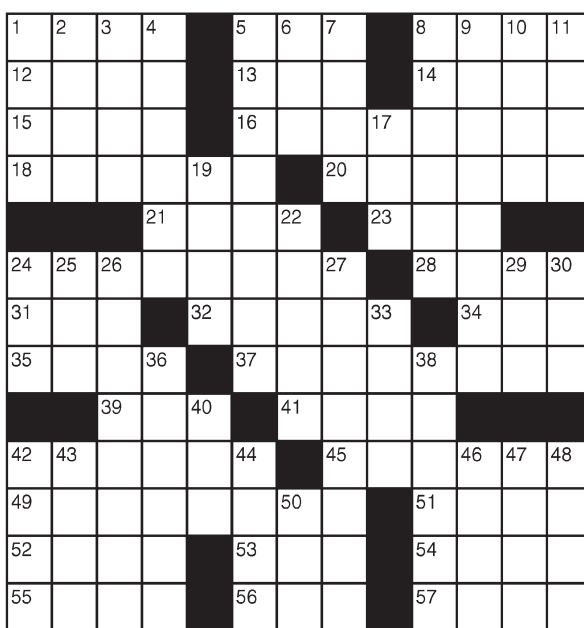
LAFF-A-DAY



King Crossword

ACROSS

- 1 Creche trio
- 5 The whole enchilada
- 8 Outlet letters
- 12 Teensy bit
- 13 Irish actor Stephen
- 14 Vivacity, in music
- 15 At the summit of
- 16 Her bed was too soft
- 18 Jungle trek
- 20 Make happy
- 21 Swindles
- 23 Workout site
- 24 Spaghetti topper
- 28 Whirled
- 31 Hosp. area
- 32 Small stream
- 34 "As I see it," to a texter
- 35 Lavish affection (on)
- 37 Lunar light
- 39 Family card game
- 41 Regard letters
- 42 Regard highly
- 45 Morals
- 49 Legume used in Asian cuisine
- 51 Acknowledge
- 52 Wax-coated cheese
- 53 Baton Rouge



- 9 Slapstick mis-site
- 10 "Buenos —!" to C, in some scores
- 11 Apple center
- 17 H.S. math
- 19 Eldest Stark child on "Game of Thrones"
- 22 Sailing vessel
- 24 Central
- 25 Green prefix
- 26 Fall-related
- 27 Relax
- 29 Actress Thurman
- 30 — de plume
- 33 Make a scarf
- 36 Puzzle
- 38 It's equivalent to C, in some scores
- 40 Sphere
- 42 Iowa city
- 43 Ranch visitor
- 44 Slithery
- 46 Currier's partner
- 47 Corn castoffs
- 48 Smack a baseball
- 50 "— was saying ..."

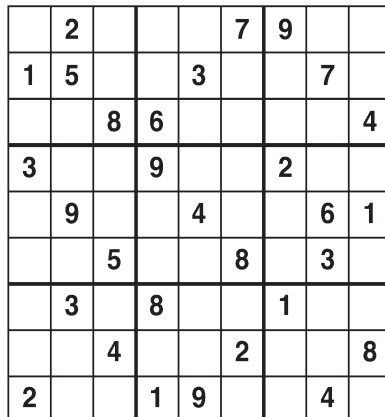
DOWN

- 1 "Serpico" author Peter
- 2 "— girl!"
- 3 Blunder
- 4 Influence
- 5 How lovers may stroll
- 6 Meadow
- 7 Genie's home
- 8 Monasteries

© 2021 King Features Synd., Inc.

Weekly SUDOKU

by Linda Thistle



Place a number in the empty boxes in such a way that each row across, each column down and each small 9-box square contains all of the numbers from one to nine.

DIFFICULTY THIS WEEK: ◆

- ◆ Moderate
- ◆◆ Challenging
- ◆◆◆ HOO BOY!

© 2021 King Features Synd., Inc.

Trivia test

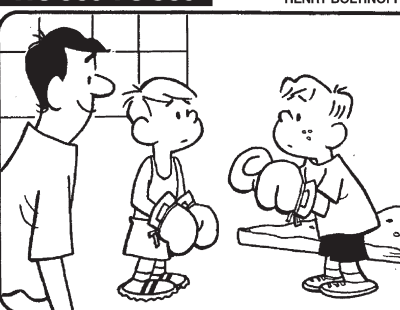
by Fifi Rodriguez

1. GEOGRAPHY: What percent of the world's population lives in the Northern Hemisphere?
2. MOVIES: Which 1987 film contains the catchy line, "May the Schwartz be with you"?
3. LITERATURE: Author John Steinbeck contends that his dog ate the first draft of which of his novels?
4. ANIMAL KINGDOM: What is a group of parrots called?
5. MUSIC: Who is considered the "Father of the Blues"?
6. U.S. PRESIDENTS: Who was the first sitting president to throw out the first pitch on baseball's opening day?
7. FOOD & DRINK: Which fruit also is sometimes called a "love apple"?
8. TELEVISION: Where do the vampires live in "What We Do in the Shadows"?
9. HISTORY: In what year did East Germany start to build the Berlin Wall?
10. INVENTIONS: Which scientist invented the color wheel?

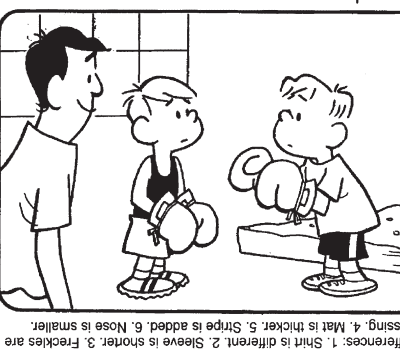
© 2021 King Features Synd., Inc.

HOCUS-FOCUS

BY HENRY BOLTIKOFF



Find at least six differences in details between panels.



Differences: 1. Shirt is different. 2. Sleeve is shorter. 3. Freckles are missing. 4. Hair is thicker. 5. Stripe is added. 6. Nose is smaller.

- 10. Sir Isaac Newton
- 9. 1961
- 8. Staten Island, New York
- 7. Tomato
- 6. William Howard Taft (1910)
- 5. W.C. Handy
- 4. A pandemonium
- 3. "Of Mice and Men"
- 2. "Spaceballs"
- 1. 90%



Solution time: 22 mins.

King Crossword

Answers

| | | | | | | | | |
|---|---|---|---|---|---|---|---|---|
| 2 | 8 | 7 | 1 | 9 | 5 | 6 | 4 | 3 |
| 5 | 1 | 4 | 3 | 6 | 2 | 7 | 9 | 8 |
| 6 | 3 | 9 | 8 | 7 | 4 | 1 | 2 | 5 |
| 7 | 6 | 5 | 2 | 1 | 8 | 4 | 3 | 9 |
| 8 | 8 | 2 | 7 | 4 | 3 | 6 | 1 | 7 |
| 3 | 4 | 1 | 9 | 5 | 6 | 2 | 8 | 7 |
| 6 | 7 | 8 | 6 | 2 | 1 | 3 | 5 | 4 |
| 1 | 5 | 6 | 4 | 3 | 9 | 8 | 7 | 2 |
| 4 | 2 | 3 | 5 | 8 | 7 | 9 | 1 | 6 |

Weekly SUDOKU

Answers

What famous little sounds might you hear from people who are nestling comfily? Cuddle calls.

SCRAMBLERS

Unscramble the letters within each rectangle to form four ordinary words. Then rearrange the boxed letters to form the mystery word, which will complete the gag!

Dainty

RENTED

Dream

RANEY

Unkind

DINES

Sniff

HEALIN

TODAY'S WORD

"Hey, Al, do we have something back there called _____?"

Your home is only as smart as your Internet.

AT&T Internet

Plans up to 100 Mbps.*

Free Smart Home Manager App* with Parent Controls.†

The bandwidth to power multiple devices at once. Number of devices depends on access size and location.

Get a seamless whole-home Wi-Fi experience with AT&T Smart Wi-Fi.†

40/mo.

888-486-0359

Prepare for unexpected power outages with a Generac home standby generator

REQUEST A FREE QUOTE!

877-557-1912

FREE 7-Year Extended Warranty* A \$695 Value!

Limited Time Offer - Call for Details

LeafFilter GUTTER PROTECTION

BACKED BY A YEAR-ROUND CLOG-FREE GUARANTEE

CALL US TODAY FOR A FREE ESTIMATE 1-855-536-8838

15% OFF YOUR ENTIRE PURCHASE

10% OFF SENIOR & MILITARY DISCOUNTS

5% OFF TO THE FIRST 50 CALLERS!

Promo Number: 285