

On The Record

Landslide preparation guide now available from DOGAMI, DLCD

The Oregon Department of Land Conservation and Development (DLCD) and the Oregon Department of Geology and Mineral Industries (DOGAMI) have released *Preparing for Landslide Hazards: A Land Use Guide for Oregon Communities* and its accompanying quick reference handout.

In response to community conversations throughout Oregon, DLCD and DOGAMI jointly pursued and obtained grant funding from the Federal Emergency Management Agency (FEMA).

The Land Use Guide responds to frequently asked community questions related to increasing local resilience to landslide haz-

ards through land use options and strategies.

Many of these questions come from communities with new DOGAMI lidar-based landslide maps.

Lidar technology has revolutionized mapping. During the last decade, DOGAMI has used lidar to produce detailed landslide inventories, shallow landslide susceptibility maps, and deep landslide susceptibility maps for many communities in Oregon.

With this new information, communities should revise local codes, plans, and policies to most effectively use the lidar-based landslide inventory and maps.

Preparing for a local or catastrophic natural hazard event requires a com-

prehensive community effort.

The goal of the Land Use Guide is to address the information gaps faced by communities with new lidar-based landslide maps.

The guide includes answers to questions such as: "What is the best method to implement this new information?"; "What changes should be made to codes, plans and policies?"; "What resources are available to homeowners and others to improve safety in the community?"

The Land Use Guide provides examples of comprehensive plan language and development code provisions that can help communities reduce risk to landslide hazards.

These examples provide general guidance allow-

ing communities to tailor land use policies and regulations to their individual circumstances.

The Land Use Guide provides:

- Explanations of the general types of landslide hazards. (Chapter 2)
- Explanation of lidar. (Chapter 2)
- Information about engineering geology reports and geotechnical engineering reports, the professionals who author them, and how to use them. (Chapter 2)
- Results of a limited review of landslide regulations. (Chapters 4, 5, and 8)
- Key issues in implementing landslide hazard risk reduction. (Chapters 4 and 5)
- Discussions of com-

prehensive plan and implementation (e.g. zoning codes, building codes) issues. Approaches to reducing landslide risk through non-regulatory and regulatory steps are included. (Chapters 3 and 4)

• Elements of a strong comprehensive plan related to landslide hazards, examples of comprehensive plan provisions from Oregon communities, and a model framework for comprehensive plan revisions. (Chapters 3 and 5)

• Elements of a strong landslide hazard ordinance, example code provisions from Oregon communities, and a model framework for a landslide

hazard ordinance. (Chapters 4 and 5)

• Key ways to reduce a community's risk from landslide hazards. (Chapter 4)

• Other resources to aid communities and individuals in reducing (mitigating) landslide hazard risks. (Chapter 5)

The Land Use Guide and accompanying quick reference handout are located on both DLCD's and DOGAMI's websites. This project was funded by the FEMA Fiscal Year 2016 Cooperating Technical Partners (CTP) Grant No. EMS-2016-CA-00017.

SLSD seeks community input on new SSA funding

The South Lane School District (SLSD) is taking steps to engage stakeholders in the process of investing funds allocated through Oregon's Student Success Act (SSA).

Passed by the legislature, the SSA provides \$1 billion per year beyond the regular Early Learning and K-12 State School Fund to support early learning, local school districts and a number of statewide educational initiatives starting in the 2019-20 school year.

The additional funding

provided by the SSA-Student Investment Account is expected to generate an additional \$2.3 million per year beyond regular state funding for the school district.

Equity is the driving vision behind this legislation.

The primary goal of the SSA is to improve outcomes for historically underserved or underachieving students. The district will be providing input opportunities for all stakeholders through surveys and discussion groups.

For any parents, students, school board and community members that want to be more involved, SLSD is soliciting participants on a district-level team that will review data and recommendations and help facilitate stakeholder meetings and surveys.

SLSD staff that wish to be more involved will have an opportunity to be on smaller teams that will identify and analyze critical data, especially disparities in outcomes.

To participate on either

of these teams, contact Jeremy Smith (Jeremy.smith@slane.k12.or.us).

The Oregon Department of Education is still working on the exact guidelines for the allocation of these funds and SLSD will be following those as they become known.

The main goal at SLSD is that "Children Come First" and this process provides a genuine opportunity to create a more equitable learning environment for all students.

New brand for Nova Health network in Lane, Douglas counties

Nova Health, a comprehensive provider of quality urgent care, primary care, physical therapy, and musculoskeletal services in Lane and Douglas Counties, has announced its rebrand from the Eugene Urgent Care, Prime Care Partners and Atlas Physical Therapy.

Eugene, Roseburg, Thurston, Junction City and Pleasant Hill Urgent Care among other primary care and physical therapy clinics in Lane and Douglas counties are now known as Nova Health.

"As Lane and Douglas counties partner in health and wellness, we are excited

to reaffirm Nova Health's partnership with our community," said Bill Clendenen, Nova Health Chief Executive Officer. "We know that this community has a choice in where they go to receive care and Nova Health remains focused on

a bright future in healthcare that revolves around what our people do best: caring for our patients."

The rebrand has been marked by updated Nova Health facility signs and updated marketing materials at all 14 clinic sites.

Ronald Howard Eller

1965-2019

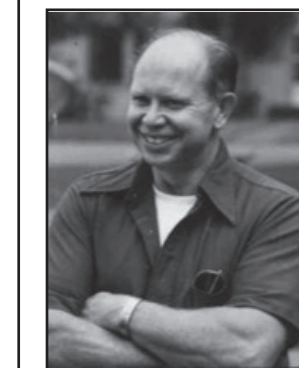


Ronald Howard Eller, born 12/24/65 in Creswell, died early this last Monday, October 28, at home in Tualatin, Ore. In his life he'd been a student, a soldier, a

grocer, a husband, and a father. Most recently he owned his own bookkeeping business, played games and enjoyed campfires in the out-of-doors. Ron crossed leaving behind his parents, John L. Eller and Merri. F. Carter, wife Jennifer Wakeland Eller and children Marco, Lewis, Liam, Tara, Lucas and Javin. His ashes will remain at Willamette National Cemetery in Portland, Oregon, services will be private. In lieu of flowers, please donate to the charity or memorial fund of your choice.

Ernest Deane Lebow

1931-2019



Ernest Deane Lebow, 87, passed away on October 24th in Grants Pass, Oregon. Deane was born in Cottage Grove, Oregon on December 13,

1931. He is survived by his wife, Barbara Ann Waltz-Lebow, his son, Nolan (Barbara) Lebow, his daughters, Cynthia Ernst and Renita (Randy) McNaughtan, 8 grandchildren, and brothers Gale, Lyle (Karen), Rex (Rosie) and sister Alice, as well as many nieces and nephews, and was predeceased by father, James Clifford Lebow and mother, Sylvia Thornton Lebow, brother Claude Lebow, sisters Faye Huntington and Arlene McKivett.

Services will be held at a later date at the Shields Cemetery.

NEED A REALTOR?

HOW ABOUT A DYNAMIC DUO?

Lindy Magallanes & Amanda Mojarro

CALL US TODAY!

(541)517-1807 | Amanda.Mojarro@Century21.com

CENTURY 21
Nugget Realty

NO COST CREMATION

With Full Body Donation to Science.
"Cremated remains returned to the family."

Smith-Lund-Mills
FUNERAL CHAPEL • CREMATORIUM
People you know, people you trust.SM

www.smithlundmills.com
123 South 7th Street • Cottage Grove • 942-0185

ENGLANDS
CRESWELL MEMORIAL CHAPEL

Local • Affordable • Caring
Cremation & Burial

Call for an appointment, prices and packages.

541-895-2522
125 West Oregon Ave, Creswell

MUSGROVE
Mortuaries & Cemeteries
www.musgroves.com

SEACOAST ENTERTAINMENT ASSOCIATION PRESENTS

TEXAS GYDSIES

Vintage Jazzy Swing

Wednesday, November 13th • 7:00 pm
Pre-concert talk 6:15 pm

FLORENCE EVENTS CENTER
RESERVED SEATING TICKETS: \$35 + YOUTH/STUDENTS UNDER 18: \$10
541.997.1994 BUY TICKETS ONLINE WWW.SEACOASTE.AORG