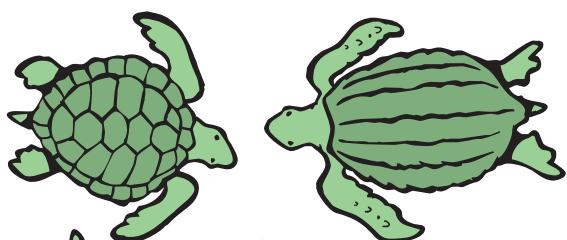


Sea Turtles

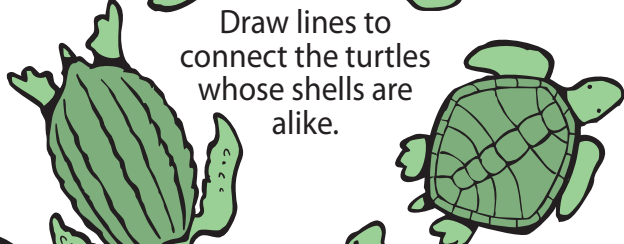
Sea or marine turtles have outlived almost all of the prehistoric animals. Marine turtles were around during the time of the dinosaurs and are still present in the world's oceans today. On today's *Kid Scoop* page, meet these incredible creatures!

Turtle Threats

In recent times, marine turtles have faced dangers. Entire turtle populations have been almost completely wiped out due to threats like hunters, habitat destruction, pollution, being hit by boats, and introduced predators.



Draw lines to connect the turtles whose shells are alike.



Kinds of Sea Turtles

According to the U.S. Fish and Wildlife Service there are seven kinds of sea turtles: **hawksbill, green, loggerhead, flatback, Kemp's ridley, olive ridley and leatherback.**

One way to tell one type of sea turtle from another is to look at the pattern of **scutes**, or plates, on their shells.

NOTE: Unlike other species of sea turtle, the leatherback does not have scales. Instead, it is covered with firm, rubbery skin with several long ridges or "keels."

Standards Link: Life Science: There is variation among individuals of one kind within a population.

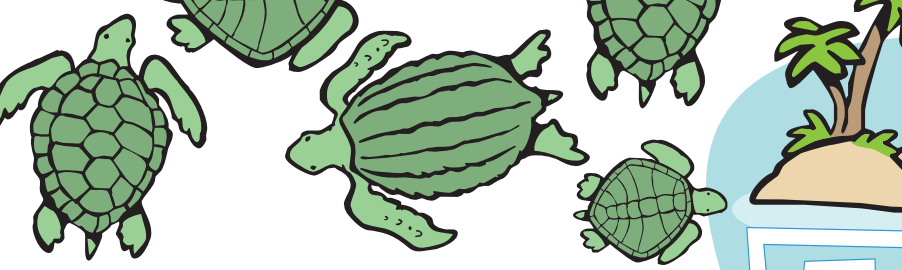
Proof It!

Are you an eagle-eyed reader? Read the story below and circle the six errors you find. Then rewrite the story correctly on a separate piece of paper.

Turtle Trouble

All sea turtles are protected by the Endangered Species Act, which lists all species as "endangered" except the loggerhead, which is listed as "threatened."

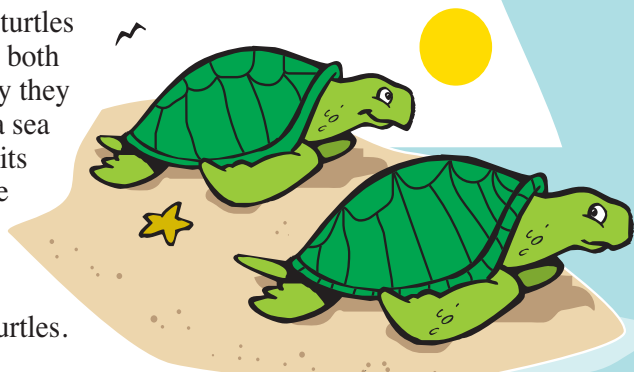
In many cases, it is human activity that has caused sea turtle populations to decline worldwide. Building along coastal areas has reduced natural nesting habitats. Adult sea turtles are captured for their eggs, meat, leather and shells. The accidental capture of adults in fishing nets has brought one species, the Kemp's ridley, to the brink of extinction. For these reasons, all sea turtle species are protect.



What's the difference?

Sea turtles and land turtles are reptiles and they both have shells. One way they are different is that a sea turtle cannot retract its limbs or its head like a land turtle can.

Find the differences between these two turtles.

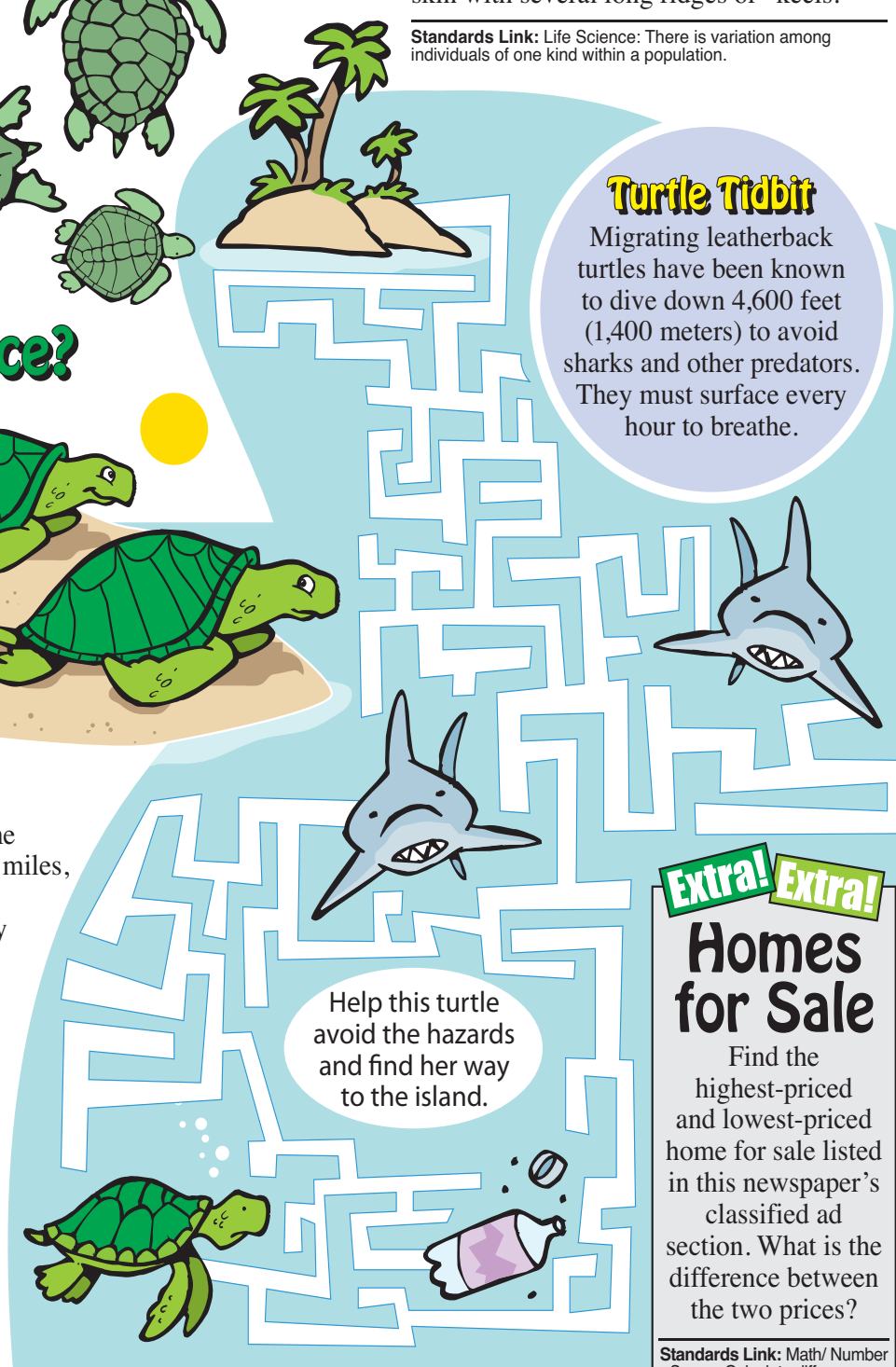


Turtle Travels

Sea turtles are long-distance travelers. Some species travel hundreds, even thousands of miles, from their feeding grounds to their nesting grounds. The adult females return faithfully to lay their eggs on the same beach where they hatched.

The breeding grounds for the Pacific population of loggerhead turtles are limited to a few beaches in southern Japan, but adults are known to migrate incredible distances in order to feed. One turtle tagged in Japan was found feeding off the coast of Baja, Mexico, a distance of over 7,500 miles (12,000 kilometers). Loggerheads have been sighted from Chile all the way north to Alaska.

Standards Link: Life Science: The sequential stages of life cycles are different for different animals.



Turtle Tidbit

Migrating leatherback turtles have been known to dive down 4,600 feet (1,400 meters) to avoid sharks and other predators. They must surface every hour to breathe.

Extra! Extra! Homes for Sale

Find the highest-priced and lowest-priced home for sale listed in this newspaper's classified ad section. What is the difference between the two prices?

Standards Link: Math/ Number Sense: Calculate differences.

What a Character!

Caring is ...



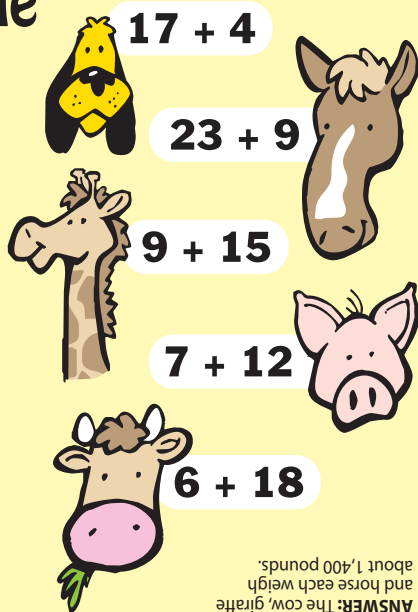
... treating others with kindness and generosity.

Kid Scoop Puzzler

Titanic Turtle

The leatherback is the largest sea turtle. It can grow to be about 6 feet (1.8 meters) long and weigh as much as 1,400 pounds (637 kilograms).

How much is 1,400 pounds? Add up the numbers on each of the animals. The animals with **even** sums weigh about 1,400 pounds. The others weigh less.



Standards Link: Math/Number Sense: Calculate sums.

ANSWER: The cow, giraffe and horse each weigh about 1,400 pounds.

Double Double Word Search

- TURTLES
- RIDLEY
- BREEDING
- JAPAN
- OCEAN
- OLIVE
- BEACHES
- BOATS
- SCUTES
- KEELS
- SPECIES
- FIRM
- MILES
- MARINE

Find the words in the puzzle. How many of them can you find on this page?

S S E I C E P S T O
E S E L I M Y L C U
H S R T R E J E L T
C E V I L O A E E S
A L F D S N P K D E
E T I C S T A O B T
B R E E D I N G M U
F U R M A R I N E C
L T K J S E L A C S

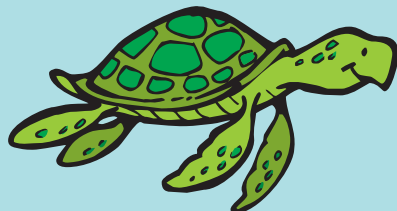
Standards Link: Letter sequencing. Recognized identical words. Skim and scan reading. Recall spelling patterns.

FROM THE Kid Scoop LESSON LIBRARY

Ocean Scrapbook

Look for newspaper pictures and stories about the ocean. Cut out the stories and pictures, include some illustrations of your own and create an "Ocean" scrapbook.

Standards Link: Earth Science: Students know characteristics of oceans.



What do turtles take to stay healthy?

ANSWER: Vitamin sea.

Write On!

School Closed Forever?

Imagine you arrived at school and the gates were closed. A big sign reads "SCHOOL CLOSED." What would happen if you no longer had the opportunity to get an education?



The 2019 Summer Reading Series
Is proudly brought to you by these sponsors

