



Cottage Grove Sentinel

Your Local News Delivered Your Way: In Print. Online. On the Go!

VOL. 131, NO. 19

SERVING
THE COMMUNITIES OF
COTTAGE GROVE,
DORENA, DRAIN, ELKTON
AND YONCALLA

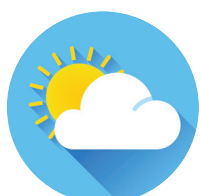
PERSONAL | COMMERCIAL
BENEFITS | SURETY

PayneWest
INSURANCE

(541) 942-0555

PayneWest.com/Cottage-Grove

WEATHER



Partly cloudy with a high of 78 and a low tonight of 52.

Full forecast on A5

COMMUNITY



Memorial bench for local icon is installed.

A3

SPORTS — B



Warriors continue winning ways.

B1

• **RECORDS**
Obituaries
Police Log
Grad News
A2

• **LORANE NEWS**
A5

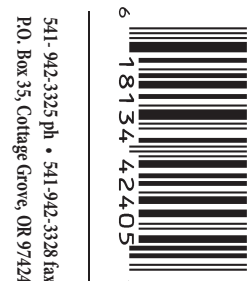
• **CLASSIFIEDS**
Listings and public notices
B7-B9

FOLLOW US FOR THE LATEST NEWS:

[f](#) /CGSENTINEL

[t](#) @CGSENTINEL

CGSENTINEL.COM



541-942-3325 ph • 541-942-3328 fax
P.O. Box 35, Cottage Grove, OR 97424

Living history coming to The Grove

By CINDY WHEELDRYER
SPECIAL TO THE SENTINEL

Surrounded by children and steeped in 19th century history, Karen Rainsong is a happy and fulfilled woman. Beginning this month, she continues her lifelong dream of offering workshops and summer camps focused on pioneer living from Singing Creek Educational Center's new home in the historic Dr. Snapp House at 360 South River Road.

Rainsong is the founder and volunteer executive director of the Singing Creek Educational Center (SCEC), a nonprofit organization she created in 2015. She is an artist and educator who grew up in Southern California and moved to Oregon 27 years ago to raise her family in "a smaller town with a strong and creative community vibe."



CINDY WHEELDRYER/FOR THE SENTINEL

Summer workshops and camps will be offered this summer by Singing Creek Educational Center, offering hand-on history experiences.

"I've always loved kids and nature," Rainsong said. "I saw there was a need in the community for living history programs for kids and I knew we could offer some-

thing unique."

Her fascination with the culture of the Old West led to a surprising genealogical discovery that she and Opal Whitely share a common ancestor: Daniel Boone.

To honor her kinship with Opal, she named her nonprofit after Opal's childhood diary, "The Singing Creek Where the Willows Grow," first published in the 1920s. She said she is delighted to now have her organization located in Opal's hometown.

The mission of SCEC is to inspire children and families toward an appreciation of local history through hands-on learning. Its interactive history programs include school field trips, classes, pioneer summer camps and

See **HISTORY 11A**

Cottage Theatre to undergo dramatic transformation

By DAMIEN SHERWOOD
DSHERWOOD@CGSENTINEL.COM

Cottage Theatre has closed its doors for the summer as extensive construction is set to expand the building and refurbish the house.

"It's going to look and feel very different," said the theater's executive director Susan Goes. "The colors will be different; the sound of the space will be different."

Dubbed "ACT III," the remodeling will improve and increase seating, upgrade technical abilities and redesign the lobby for improved flow. One of the most notable changes in the theater's house will be the seating arrangements.

Currently, about 150 seats wrap 180 degrees around the stage, most of them installed when the building was built in 1998 — and even then, these were bought used from a church in Portland.

With age, some of them have become prone to squeak and distract from performances.

"And we're spending a lot more time than we're enjoying replacing broken bolts and things that go wrong with the seats," Goes said.



DAMIEN SHERWOOD/COTTAGE GROVE SENTINEL

Among the changes will be a new seating arrangement for theatergoers a better, deeper view of the stage from any seat in the house.

"So we knew that these seats were really approaching the end of their useful life span."

In choosing replacements, Cottage Theatre invited members of the community to try nominee seats and vote for their favorites. The new seats were picked for their comfort and one-size-fits-all appeal.

With new seats also comes

a new view of the stage. Since 1998, the theater has gradually seen the production of more large-scale musicals.

"So this idea of wrapping around 180 degrees doesn't really make sense with our current repertoire," said Goes. "When you have a big set on stage, it's just really difficult for those people in those far side seats to see all

of it"

To address this, the project will bring seating in about 15 degrees on each side, enabling a deeper view of each production for all audience members.

"In the new arrangement, we'll be able to have an actor at the back wall and

See **THEATRE 7A**

Cascade Chorus to croon for Carousel Project

By DAMIEN SHERWOOD
DSHERWOOD@CGSENTINEL.COM

With several years separating its last local performance, the barbershop performance group Cascade Chorus is returning to Cottage Grove on Sunday, May 19, to perform at the Calvary Chapel as part of a fund-raising effort for the Cottage Grove Carousel project.

"Barbershop harmony is very unique," said Bob Martindale, lead section leader of the chorus. "There are things required in arranging to make it 'barbershop harmony.'"

The group performs regularly in Eugene and other Oregon cities, seeking to preserve the musical institutions of a cappella and four-part harmonies while delivering entertainment

and charitable services to communities.

It was through the Cottage Theatre that Martindale joined the barbershop chorus in 2000. As a stand-in for barbershop singers in the production of "The Music Man," Martindale caught the attention of the Cascade Chorus.

"One of the guys came to me and said, 'Do you sing with anybody?'" Martindale

recalled. "I said, 'not really.' He said, 'You do now. You're coming with us.'"

Cascade Chorus represents a division of the larger Barbershop Harmony Society which covers swathes of the United States and Canada. Oregon's local division was established in 1946 and has seen past membership at times number more

See **CHORUS 7A**

May 2019 Special Election overview

By DAMIEN SHERWOOD
DSHERWOOD@CGSENTINEL.COM

With ballots mailed and official drop sites opened for Lane County voters as of May 2, the county's 2019 Special Election has entered full swing.

Most ballots and voter pamphlets should be received by today for those who made the April 30 cut-off for voter registration.

For residents of Cottage Grove and the surrounding areas in Lane County, the following is a brief breakdown of ballot items of interest. In the week preceding Election Day, *The Sentinel* will provide a deeper dive into the South Lane School District race and Lane County measures 20-299 and 20-300.

South Lane School District #45J3

Of four seats available on the South Lane School District board of directors, three are running unopposed. Incumbents Tammy Hodgkinson and Jerry Settlemeyer are running for positions 1 and 6, respectively.

Merlene Martin, who currently holds the third unopposed seat, announced last year that she was not going to run for re-election; she was elected to the board in 2011.

For that position, Dustin Bengtson will be running unopposed. Bengtson's candidate filing form notes that he currently works as a federal employee for the U.S. Army Corps of Engineers. A graduate from the University of Iowa, he holds a Bachelor of Arts in communications.

The remaining seat being contested this year is position 7. Incumbent Gary Mort has held the position since 2015. Mort, who has a doctorate degree in chemistry from the University of California-Davis, is a faculty instructor in the science department at Lane Community College.

Challenging the seat is Demian Schwartz, a former school administrator with a Master of Arts in education from Goddard College. Schwartz lists experience with several local non-profit boards in her filing.

"I believe strongly in civic responsibility and community service," Schwartz states in the voters' pamphlet. "As an educator my primary work is with children and families; this is the population I feel

See **ELECTION 9A**

EMERALD VALLEY ARMORY, LLC

Handguns · Long Rifles
Concealed Carry Classes

Tues. - Sat. 10-6
147 E. Oregon Ave. Creswell, OR 97426
541-895-2666

MICHELE MONROE, LCSW

Counseling Services
541-255-8822 • 1450 Birch Ave • Cottage Grove, OR 97424

- Individual and Family Counseling
- Insurance and Sliding Scale
- Accepting New Clients
- Weekend and Weekday Appointments Available