

Kid Scoop

THE AWARD-WINNING PRINT & ONLINE FAMILY FEATURE



© 2019 by Vicki Whiting, Editor Jeff Schinkel, Graphics Vol. 35, No. 14

Kid Scoop Together: Lepre-coins

By selling fairy shoes, Lily Leprechaun has earned a lot of golden lepre-coins (that's Leprechaun money).

Work with a parent and help Lily count her money. You'll need a **RED**, **BLUE** and **GREEN** crayon to circle the coins that add up to each amount. **IMPORTANT:** You can only circle each coin once, and when you're done, every coin should be circled.

Circle in BLUE:
\$1.30 worth of Lepre-coins

Circle in RED:
55¢ worth of Lepre-coins

Circle in GREEN:
45¢ worth of Lepre-coins



How Do Leprechauns Get Their Pots of Gold?

Around St. Patrick's Day, you will often hear legends about leprechauns and their pot of gold at the end of the rainbow. **Have you ever wondered where they get all of that gold?**



We make shoes for fairies!



Their shoes wear out very quickly because fairies dance all night.



So, we are always busy making new shoes for them. And they pay us in gold - LOTS of gold!

Watching the Costs

Just making and selling shoes isn't enough to collect the gold needed to fill a leprechaun's pot. Leprechauns have to keep an eye on the **costs** of making fairy shoes, too.

Take a look at the cost of shoe supplies on this list.



- Tree Bark for Shoe Soles: 2 coins
- Pine Needles for Sewing: 1 coin
- Daisy Petals for Shoe Liners: 2 coins
- Lilac Petals: 3 coins
- Petunia Petals: 2 coins
- Rose Petals: 4 coins

How many shamrocks can you find on this page?

What if the leprechaun spent more gold coins to make the shoes than he charged the fairies? He would run out of gold pretty quickly!

If it costs 7 gold coins for the supplies to make one pair of fairy shoes, what should the leprechaun charge so that he covers his costs and has some money left over to pay himself for his work to make the shoes?

50 gold coins!? That's way too expensive for me!



Price matters!

Picking the right price is important. If the leprechaun charges too little, he will lose money. But if he charges too much, he will lose customers.

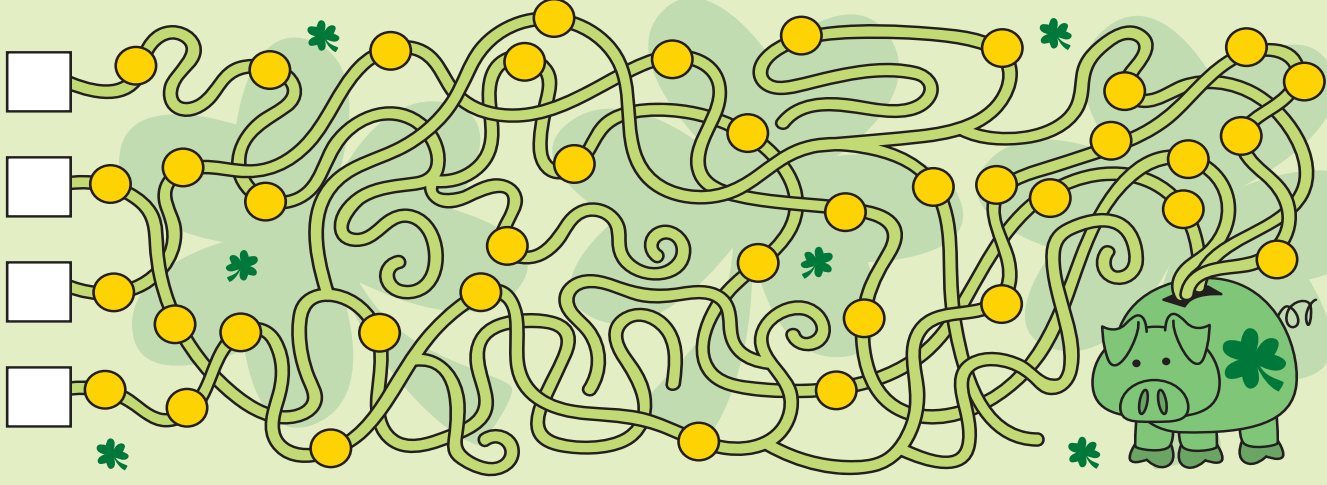
Use these worksheets to add up the costs of making each pair of shoes. Then find the difference between the costs and the selling price to determine the profit for each pair of shoes.

Pixie Prancers	Pretty Petunias	Refined Rosies
TREE BARK	TREE BARK	TREE BARK
DAISY PETALS	DAISY PETALS	DAISY PETALS
PINE NEEDLES	PINE NEEDLES	PINE NEEDLES
LILAC PETALS	PETUNIA PETALS	ROSE PETALS
TOTAL COST: _____	TOTAL COST: _____	TOTAL COST: _____
PRICE: 13	PRICE: 16	PRICE: 20
PROFIT: _____	PROFIT: _____	PROFIT: _____

LEPRECHAUN'S GOLDEN VOCABULARY WORD:

PROFIT: Money earned after the expenses are paid.

Add up the coins on each path that leads to the Leprechaun piggy bank. Which path has the most gold coins?



Extra! Extra!

Math is GOLDEN!

Numbers are useful every day. Look through the newspaper to find a number that tells each of the following:

- An address
- A price
- A phone number
- An age
- A year

Standards Link: Research: Use the newspaper to locate information.

Kid Scoop Puzzler

Fairy Shoe Sorter

Draw lines between each pair of fairy shoes to make exact matches. Look carefully!



Standards Link: Follow simple written directions.

Double Double Word Search

- LEPRECHAUN
- CUSTOMERS
- PATRICK
- LEGENDS
- FAIRIES
- PETALS
- PROFIT
- COSTS
- SHOES
- PRICE
- NIGHT
- GOLD
- PAIR
- BUSY
- POT

Find the words in the puzzle. How many of them can you find on this page?



Standards Link: Letter sequencing. Recognized identical words. Skim and scan reading. Recall spelling patterns.

FROM THE Kid Scoop LESSON LIBRARY

Small, Large, Larger and Largest

Find four numbers in today's newspaper. Cut them out and glue them on a piece of paper in order from the smallest to the largest.

Standards Link: Research: Use the newspaper to locate information.

When are Irish potatoes not Irish potatoes?

ANSWER: When they are French fries!

Write On!

Four-leaf Clover

I knew my luck would change the moment I picked up a beautiful four-leaf clover.

Finish this story.

Thank you to our Newspaper in Education sponsors
Want to be a Newspaper in Education sponsor? Contact us today! 541-942-3325

PakTech
We are the Handle People

Brad's Chevy
COTTAGE GROVE CHEVROLET-GMC

Cetera
ADVISOR NETWORKS LLC
Member FINRA/SIPC
Ann M. White CFP®