

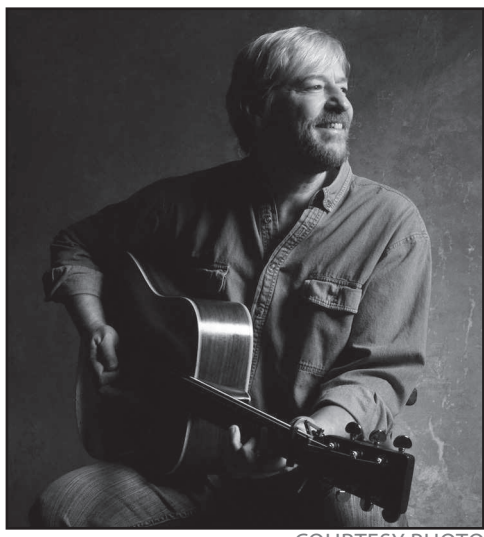
New singer to perform in Cottage Grove tonight

By Caitlyn May
cmay@csentinel.com

He's been the pen behind Guy Clark, Janis Ian and Peter Paul and Mary. But tonight, Jan. 19, Buddy Mondlock will showcase his work in his own voice.

The songwriter is headed to the Cottage Events Venue for a 7 p.m. show as part of the venue's latest concert series.

"You might have heard his song 'The Kid,' recorded by David Wilcox, Peter, Paul and Mary and Cry, Cry, Cry, and maybe even sung it yourself around a campfire," said Kim Still of the Cottage Events Venue. "He draws you into his world — where a single snowflake follows the trajectory of a



COURTESY PHOTO

Buddy Mondlock

relationship, where you get your pocket picked by a Roman cat, where you might swim over the

edge of the world if you're not careful and where dreams that don't come true still count."

Currently residing in Nashville, TN, Mondlock grew up in a suburb of Chicago taking guitar lessons at age 10 before performing at open mic nights around the city after college.

Guy Clark — an American folk singer — gave Mondlock his big break after spotting him under a tree, playing his guitar at the Kerrville Folk

Festival.

A few phone calls to Nashville later, and Mondlock was headed south with a U-Haul and his guitar.

In between recording solo records and writing with Garth Brooks, Mondlock continued touring and his next stop is Cottage Grove.

"I've never been to Cottage Grove," he said. "I've been to Eugene but that was quite a few years ago. I do remember that it's a beautiful part of Oregon so I'm looking forward to it."

Admission to the show is "a suggested" \$20 at the door with all proceeds going to the artist.

For more information, contact the Cottage Events Venue at 541-942-6888.

South Lane Physical Therapy
Orthopedic • Sport • Spine

Quality Local Care...

- Sports Training: Golf, Running, Tennis and More...
- Orthopedic
- Sports Rehabilitation
- Rapid Access for Urgent Issues
- Lunch and Evening Appointments



W. Stu Hogg
PT, OCS, COMT

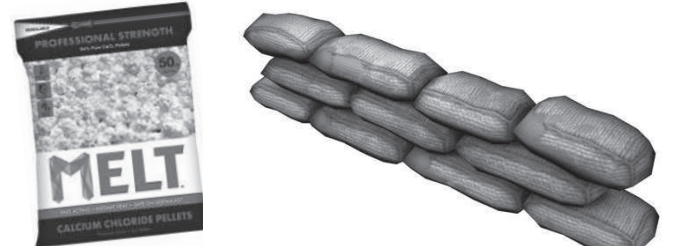


Marie Williamson
PTA

75 Gateway Blvd. Suite A
Cottage Grove, OR 97424
541-942-6482
southlanephysicaltherapy.com

 **Visit us on Facebook**

WE HAVE SANDBAGS! WE HAVE ICE MELT!



Family owned and operated for over 47 years.



LANDSCAPE AND BUILDING MATERIALS

Open 7 days a week!

79149 N. River Road

541-942-4664

L-HAUL AUTHORIZED DEALER



Winter Heating Tune-Up

Only \$99*

We'll make sure your system is running effectively and efficiently. Call for details and an appointment today, and beat the winter rush!

Complete Heating & Cooling System Service
Reasonable Rates • All Work Guaranteed



www.jamesheating.com
115 Lawrence St., Eugene, OR 97401
CCB #47396
Bus. (541) 461-2101 • Fax: (541) 686-4820

* Limited-time offer. Restrictions apply. Call for details.

LTD from AI

longer offering a service that would offer fixed times for service.

According to Rees, the MOD program would continue to be monitored and alterations to services could be made. "It's a pilot," she said. "It could take anywhere from 10 minutes to 40 minutes depending on the trip and what the algorithm looked like." When asked to define "long wait time" by councilor Greg Ervin, Rees noted that a 40-minute wait would be at the longer side of the spectrum.

"There's one word for this," Fleck said. "A boondoggle. It will be horrible for folks who live in the section of town who will be forced to use this service. When you get a 98 route which is normally a 25-minute ride now turning into 50 minutes and then a 40-minute wait for an additional bus, this is ridiculous. It's unacceptable and hurts the lowest income people." Fleck did differentiate between his approval of the MOD program versus the reduction in service and reassured his support of the local South Lane Wheels program.

LTD representatives noted that changes to the service would be considered during one of the organizations three adjustment periods and results of public surveys regarding the service would be taken into

gram to implement and run," she said in response to questions surrounding why LTD could not offer both the current service and the MOD.

"Don't our local businesses pay taxes," councilor Roberts

search of a problem. There have been dictators elected to run countries because they keep the trains running on time and now the council is going to do something that would have the trains not running on time."

The vote before the council on Monday night was to approve the process allowing the city to act as the receiving agent for funds for South Lane Wheels to take part in the program—not to approve the program or reduction of services.

With a motion and second on the table, the board vot-

ed unanimously to deny the request and councilor Jake Boone subsequently made a motion to reconsider the issue at the next city council meeting once the agreement between LTD and the city was complete.

Under the proposed changes, the MOD rides would run \$1 per trip and current LTD fares would still be honored.

"This is ridiculous. It's unacceptable and hurts the lowest income people."

-City Councilor Mike Fleck

account. The first opportunity for service change after the implementation of the MOD program and reduced services would be June of this year.

According to Rees, the MOD program was implemented after it was funded by grants in several other communities and results showed an increase in rider diversity and greater access to public transportation. LTD did not apply for a grant to implement the program.

"It is a more expensive pro-

gram to implement and run," she said in response to questions surrounding why LTD could not offer both the current service and the MOD.

"When LTD came to our community it was with specific routes and schedules," said resident Chris Holloman. "Now they're going away and keeping the tax base which we have no control over. Now we have LTD saying you either take this or leave it. We're not going to do what we said we were going to do but keep your tax money. It's technological solution in

TURNING 65 AND NEED HELP WITH YOUR MEDICARE CHOICES?



Call Paul to help simplify the complicated.

541-517-7362

Paul Henrichs ~ Independent Agent
coverage4oregon@gmail.com

LTD | Connector

YOUR NEIGHBORHOOD SHUTTLE

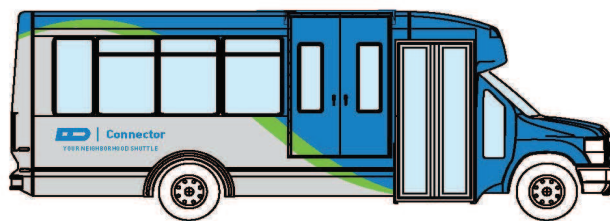
A NEW WAY TO GET AROUND COTTAGE GROVE!

The LTD Connector is a new pilot shuttle service in Cottage Grove. To use this new shared ride program, download the free Microtransit app. by Transloc and schedule a pick up time. The shuttle will arrive at your location and transport you to your Cottage Grove area destination. For those without a smartphone, pick up service can be scheduled by calling 541-942-0456 ext.1.

Service and call-in requests are available Monday through Friday, from 7:00 a.m. to 7:00 p.m.

The cost of the shuttle is \$1 per ride. All other LTD fare is also accepted. Regular bus routes on Saturday and Sunday will remain unchanged on Route 98.






This pilot program will operate only within the Cottage Grove city limits and will run from January 14, 2019, through February 2, 2020. Continued service will depend on the service results of the shuttle during this timeframe.



UNA NUEVA FORMA DE MOVERSE POR COTTAGE GROVE

El Conector de LTD es un nuevo servicio de traslados de prueba en Cottage Grove. Para utilizar este nuevo programa de RideShare, descargue la aplicación gratuita Microtransit. por Transloc y programe una hora para ser recogido. El servicio de transporte llegará a su ubicación y lo transportará a su destino en el área de Cottage Grove. Para aquellos sin un teléfono inteligente, el servicio de recogida se puede programar llamando al 541-942-0456 ext.1.

El servicio está disponible de lunes a viernes, de 7:00 a.m. a 7:30 p.m. Las solicitudes por teléfono deberán organizarse antes de las 7:15 p.m.

-  Download the **mobile app** on your smartphone:
(Download the Microtransit App by TransLoc from your app store)
OR
-  Schedule your ride online:
OnDemand.TransLoc.com
OR
-  Call **541-942-0456** ext. 1
-  **\$1.00/ride** or other LTD fare accepted.
-  For more information go to LTD.org/Connector.

This service of Lane Transit District is in partnership with the City of Cottage Grove and South Lane Wheels.

SOUTH LANE COUNTY FIRE & RESCUE

The Only Emergency Medical Transport Service in South Lane County



Call 541-942-4493 for info.
FOR EMERGENCY DIAL 911
Serving South Lane County.

www.southlanefire.org

