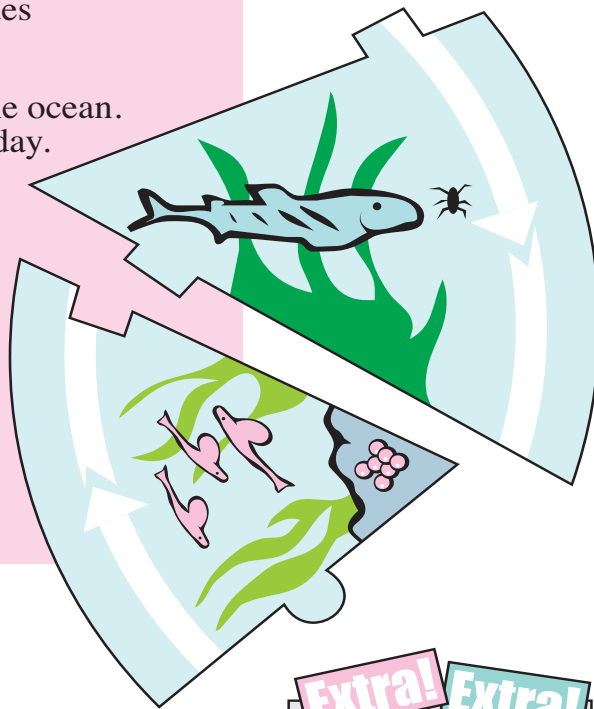
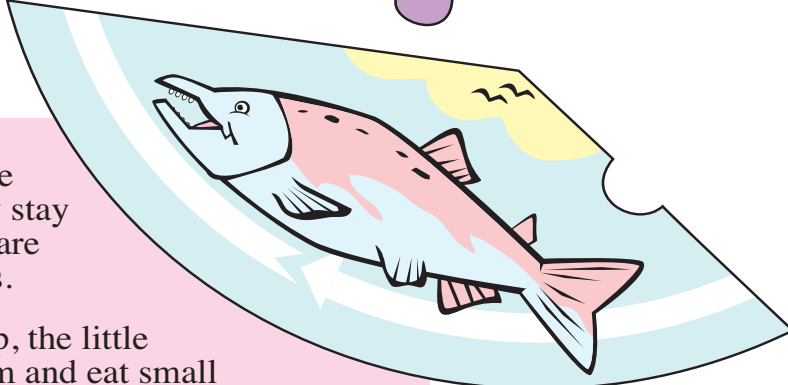
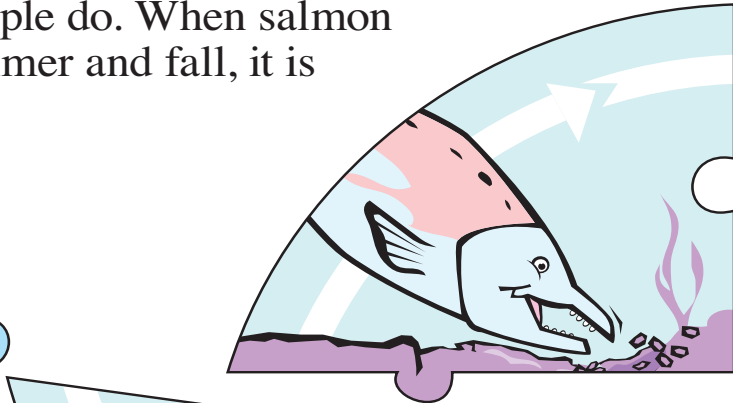
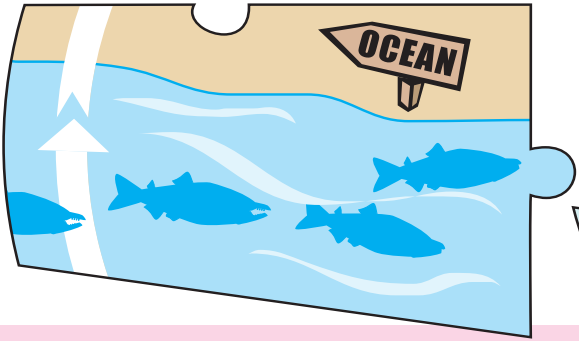


# The Salmon Are Running!

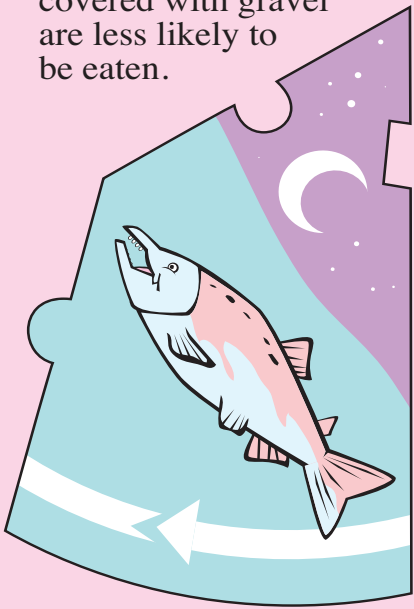
Salmon don't have feet and can't run like people do. When salmon swim upstream from the ocean in the late summer and fall, it is called **running**.

### A Salmon's Life Puzzle

Cut out each of the puzzle pieces and put them together to show the life cycle of a salmon.



1. The female salmon digs a nest in the gravel of a river bed and lays eggs. Eggs that are well covered with gravel are less likely to be eaten.
2. The eggs hatch. At this stage they are called **alevin**. They stay in the gravel for safety and are nourished by their yolk sacs.
3. Once the yolk sac is used up, the little fish – now called **fry** – swim and eat small insects. They develop stripes on their sides that help to camouflage them.
4. When the fish get larger, they swim to the ocean. They swim at night and hide during the day.
5. They live in the ocean and grow into adults, eating herring and anchovies.
6. They return to the stream where they hatched. The females lay thousands of eggs in the gravel and the males fertilize them. This is called **spawning**. After spawning, the adults die.

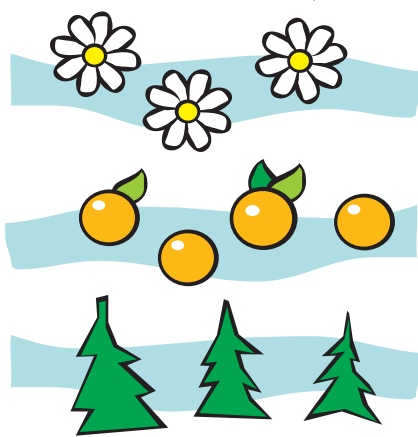


**Standards Link:** Life Science: Sequential stages of life cycles are different for different animals.

### Another Salmon Puzzle

Salmon live in the ocean for between one to seven years, depending on the species, before returning to their birthplace to spawn. Some travel thousands of miles before returning to the place where they hatched to continue the life cycle.

No one knows for sure how salmon find the stream where they hatched. Some scientists think that each stream or river has a special odor. Salmon may smell their way to the place where they hatched.



Unscramble the word on each salmon. Match each to the stream with the same "smell."

**Standards Link:** Reading Comprehension: Follow simple written instructions. Life Science: Animals have structures that serve different functions.

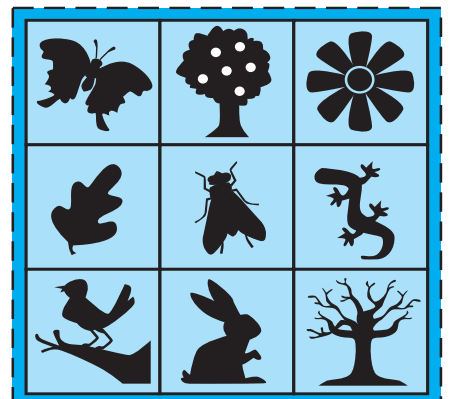
### Extra! Extra! Give Me a Verb

Look through the newspaper for a headline with a strong verb. Ask a friend to think of a verb. Replace the verb in the headline with your friend's verb. Reread the headline.

**Standards Link:** Grammar: Identify and use verbs in writing.

### Nature Walk Bingo

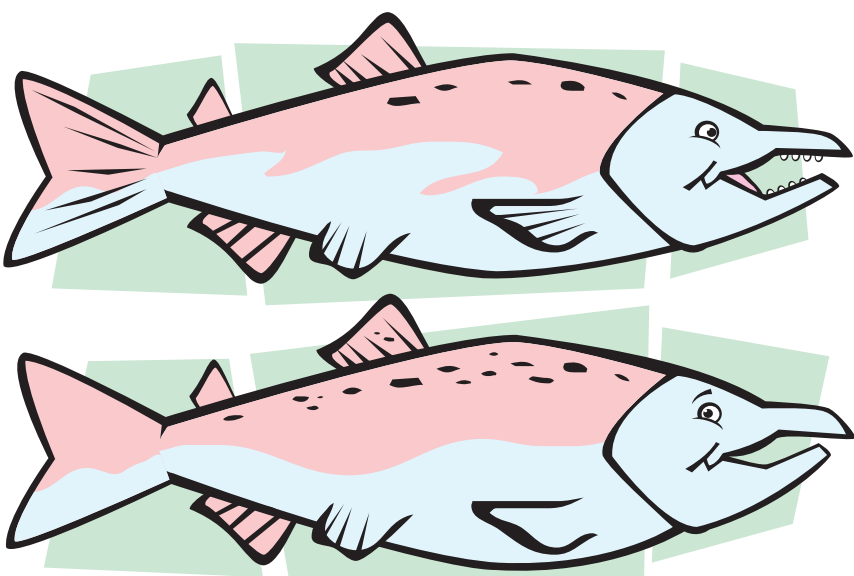
Go for a nature walk with some friends. Each of you select one of the bingo cards below. When you see one of the things shown on the card, cross out that space. The first person to black out their card wins!



**Standards Links:** Physical Education: Understand the benefits associated with participation in physical activities.

### Kid Scoop Puzzler

Find at least five differences between these two salmon.



**Standards Link:** Scientific Investigation: Find similarities and differences in common objects.

### Double Double Word Search

- SALMON
- GRAVEL
- OCEAN
- INSECTS
- FRY
- ALEVIN
- SPAWNING
- YOLK
- RUNNING
- THOUSANDS
- SWIM
- ODOR
- RIVER
- EGGS
- HATCH

Find the words by looking up, down, backwards, forwards, sideways and diagonally.



**Standards Link:** Letter sequencing. Recognized identical words. Skim and scan reading. Recall spelling patterns.

### FROM THE Kid Scoop LESSON LIBRARY

#### Salmon Search

Look through today's newspaper for a word that starts with each letter in the word **SALMON**. Use the words to write a poem about a salmon.

**Standards Link:** Vocabulary Development: Match beginning sounds. Writing Analysis: Write poetry using a variety of formats.

#### Where do salmon keep their money?



**ANSWER:** In the river bank.

### Write On!

#### Exploration

Describe an area of the Earth you would like to explore and explain your choice.

Thank you to our Newspaper in Education sponsors

Want to be a Newspaper in Education sponsor? Contact us today! 541-942-3325



Ann M. White CFP®