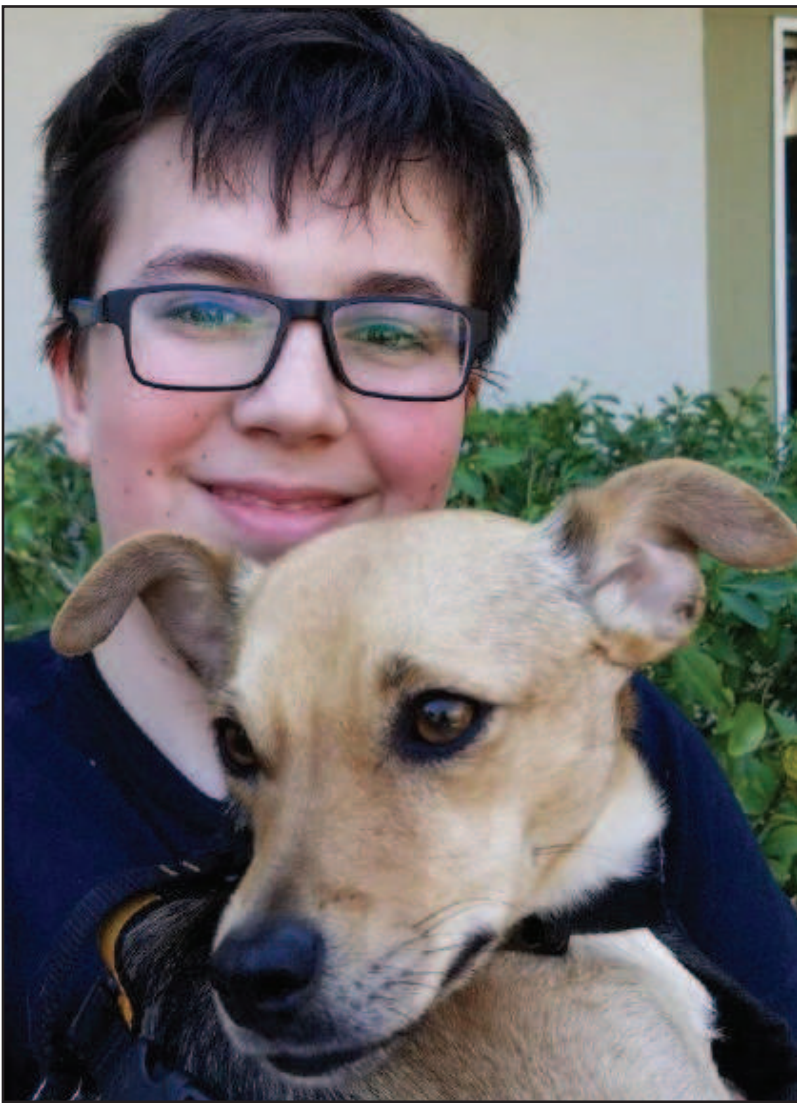




Pet Tips 'n' Tales

by Mary Ellen "Angel Scribe"

Tiny Tim to the rescue



"Tiny Tim had something special about him," said Catherine. "His eyes are soulful, he has an adorable face, and tall elf-like ears. He is a two-year-old, Italian greyhound and Deer Head Chihuahua mix. I can't believe he was that far away! I kept telling my son, 'Wait for the right dog, the right dog will find us,' and it definitely did."

"At midnight, my mum and I drove to the airport," said Caden. "I was so happy to have my own dog! After dad died I wanted a dog to love and I love Timmy. He is so beautiful and was he glad to see us! He had flown for six hours and 4,450 miles to the pacific coast and needed to go potty!"

Caden sleeps with his new dog and it has only once pushed him out of bed! "He takes up the whole bed," laughs Caden. "When I roll over, his face is in mine! Of course, I have to wake up and kiss and hug him. He loves cuddling."

After a walk in the rain, I dry Timmy off with a towel," said Caden. "He does not like the rain and paw-furs to walk under store awnings. He is so smart and holds a treat with his two front paws, like a raccoon, to put in his mouth. He likes dried sardines and dried beef liver,

but if we buy the "wrong" kind he won't eat them. He makes me laugh when he plays with other dogs. If they run at him, he does a barrel-roll and the other dog has to jump over him."

"Honestly, we have found nothing wrong with Timmy, he is so well behaved and arrived leash trained," said Catherine. "He is so calm that even strangers comment on his behavior. The day he arrived, we took him to see my mother in a care home. He took to the residents and staff as if he had truly arrived home."

When Caden or I are petting another dog, Timmy gets jealous! His facial expressions and body language tell us that he does not like our behavior! He tries getting in between us and the other dog. He goes everywhere with us, so we bought him a car harness that clips to a seat belt and a bike basket for family rides. We are also going to take him camping and kayaking with us, and teach him to swim. But just in case he does not catch on like Mary Ellen's famous swimming cats, we bought him a life jacket."

"We love our dog and our cat, Evie, does too," admits Caden. "He's brought our family together and helped heal the grief of my father. I feel that I am in the final stages of grieving because of this dog. I love him so much! I don't know what I would do without him."

When Caden was 11, his parents discussed adopting a dog, but tragedy struck with his father's unexpected passing.

A family dog was put on hold until his mother, Catherine, could catch her breath. Six months later, she began earnestly looking for a dog. She looked and looked; but all the dogs were too big or were not good with cats or children. Their res-

cue cat, Evie, also voted for a dog that liked cats.

A year after her husband passed, she finally found "the dog", Tiny Tim, at a pet shelter on the Gulf of Mexico. It was his second shelter, the first was going to euthanize him, but then a no kill group rescued him. (PawHuggers.org) He was a starving nine pounds when he was found and now he's 17 pounds."

TIPS

A baby/pet gate works wonders when you bring a new dog into a home with cats. It gives cats a way out of a prickly situation, and it bars the dog from purr-suing a cat or devouring the cat's food or kitty litter.



Tell us your pet tips and tales: angelscribe@msn.com
Follow us on Facebook: [facebook.com/PetTipsandTales](https://www.facebook.com/PetTipsandTales)
Adopt Loving Pets: www.PetFinder.com
Neuter/Spay Assistance Program: (541) 942-2789

Comprehensive family, medical eyecare and optical services



Cataract exams • Glaucoma exams • Lasik exams • Diabetic exams
Serving Cottage Grove Community since 2006

ClearVISION
PACIFIC CLEARVISION INSTITUTE
Monday thru Thursday 9-5, Friday 9-4
257 N. 8th St. • 541-942-5000
www.PCVI.com

SOUTH LANE COUNTY FIRE & RESCUE

The Only Emergency Medical Transport Service in South Lane County



Community Public Education:

- CPR/AED
- Heart Attack Recognition
- Fall Prevention
- Stroke Prevention
- Fire Prevention
- Fire Extinguishers
- Fire-Med Membership

Call 541-942-4493 for info.
FOR EMERGENCY DIAL 911
Serving South Lane County.

www.southlanefire.org



Read Pet Tips 'n' Tales, Offbeat Oregon History and other guest editorials all week long at cgsentinel.com

COTTAGE GROVE HOUSEHOLD HAZARDOUS WASTE ROUND-UP



SATURDAY
MAY 12 • 8-2

SOUTH LANE COUNTY FIRE & RESCUE
233 HARRISON AVE
COTTAGE GROVE

SPONSORED BY LANE COUNTY,
THE CITY OF COTTAGE GROVE,
SOUTH LANE COUNTY FIRE & RESCUE
COTTAGE GROVE STATION
AND LANE ELECTRIC



WE DELIVER!

Within the Cottage Grove city limits - only \$3.00



RETAIL & COMPOUNDED PRESCRIPTIONS
PET MEDS
IMMUNIZATIONS
FAST & FRIENDLY

"Customers Are Our Priority - Service Is Our Passion"



CINCO DE MAYO

What's Pinteresting?

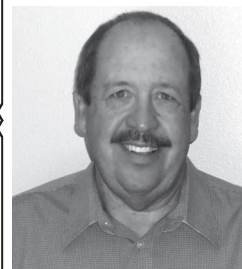
FREE - Family DIY Workshop

DON'T JUST PIN IT, MAKE IT YOUR OWN!

Saturday
May 5
10:30am - 1:30pm
Creswell Health Mart Pharmacy

175 E. Oregon Ave., Creswell • 541-895-2413
www.oregonhealthmart.com

TURNING 65 AND NEED HELP WITH YOUR MEDICARE CHOICES?



Call Paul to help simplify the complicated.

541-517-7362

Paul Henrichs ~ Independent Agent
coverage4oregon@gmail.com



We have 2x12 Rough Cut Cedar for Raised Beds in stock!



LANDSCAPE AND BUILDING MATERIALS

Open 7 days a week!

79149 N. River Road

541-942-4664



WHAT TO BRING:

Bring paint, household cleaners, lawn and garden chemicals, car care products, arts and crafts products, and just about any other household hazardous waste. The limit is 35 gallons of waste in total from each household. Check labels for words like flammable, corrosive, poison, caution, and danger. For your safety it is always best to carry these items in a separate compartment (like the trunk of your car) with secured lids to eliminate spills in transport.

DON'T BRING:

Empty containers, drums, radioactive waste, asbestos, pressurized cylinders, explosives or electronics. For information about disposal of radioactive waste, asbestos and explosives, call Lane County Waste Management Division at 541-682-4120. Up to seven (7) Covered Electronic Devices, CEDs. Can be recycled for free at any one time at these 9 Lane County Transfer Stations; Glenwood, Cottage Grove, Creswell, Florence, Marcola, Oakridge, Rattlesnake, Veneta, and Vida during normal operating hours. Also, Lane County accepts sharps, oil, antifreeze and batteries of all types year-round at all refuse disposal sites. Call 541-682-4120 for more information.

What about hazardous waste from businesses?

Businesses which generate small amounts of hazardous waste may pre-register to bring that waste to this event. Businesses must pay for disposal of the waste, but most can save money by using this program, rather than hiring a contractor on their own. For more information about this program, call Lane County Waste Management Division at 541-682-4120.

Year Round Collection Sites—Paint, Electronics, and Fluorescent Lamps

Paint, Electronics, and Compact Fluorescent Bulbs (and tubes up to 4 feet) are accepted year-round at various locations in Lane County through on-going collection programs. Check out the websites below to find a location near you, or call 541-682-4120 for more information.

PaintCare
www.paintcare.org

Oregon E-Cycles
www.oregoncycles.org
1-888-5-ECYCLE (532-9253)

CFL Collection Sites
List of Participating Lighting and Hardware Stores
www.lanecounty.org/lamps