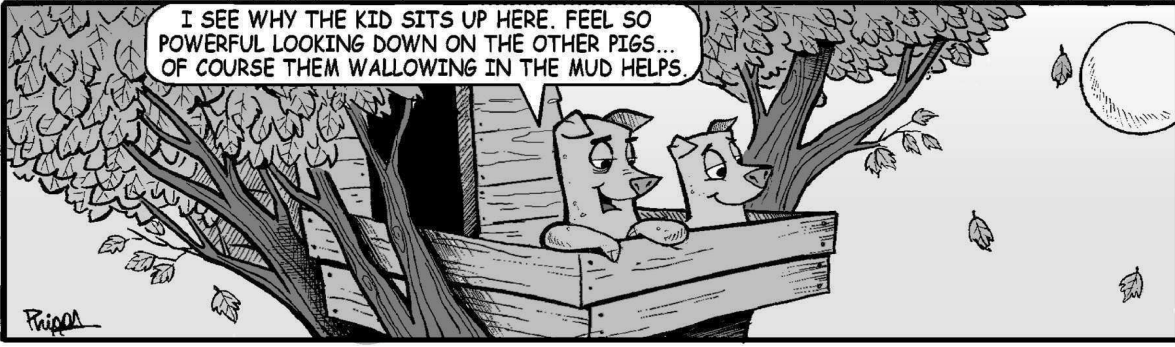


# Amber Waves

by Dave T. Phipps



# Out on a Limb

by Gary Kopervas



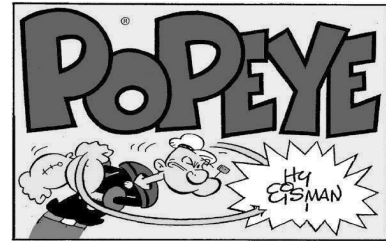
# R.F.D.

by Mike Marland



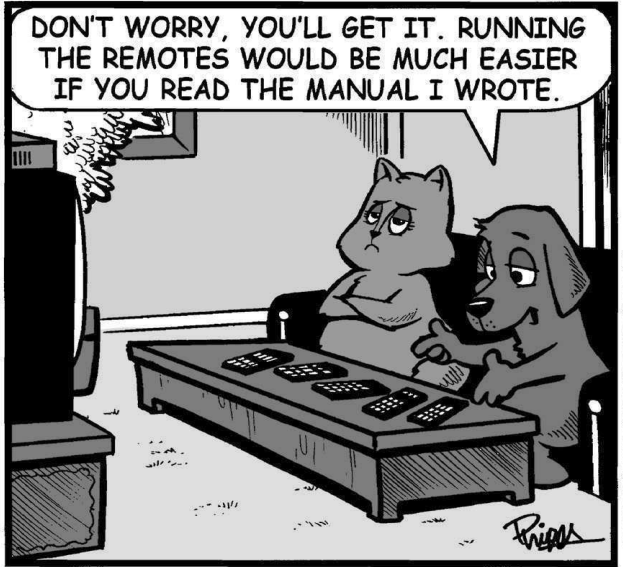
# The Spats

by Jeff Pickering

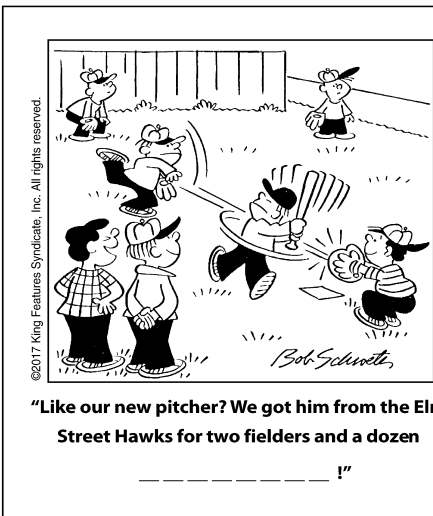


# Just Like Cats & Dogs

by Dave T. Phipps



# LAFF - A - DAY



# SCRAMBLERS

Unscramble the letters within each rectangle to form four ordinary words. Then rearrange the boxed letters to form the mystery word, which will complete the gag!

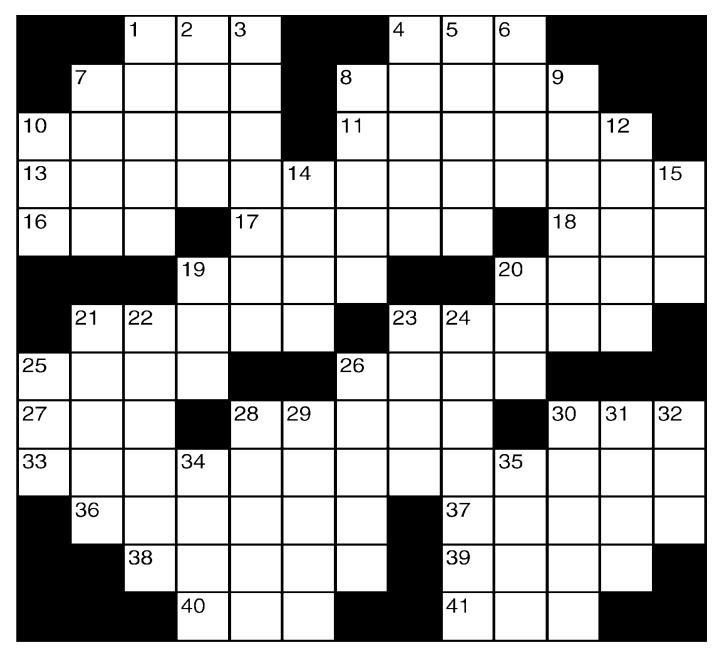
- Believe: KINTH
- Hide: CROWE
- Alcove: CHINE
- Features: SALITED

TODAY'S WORD

# King Crossword

## ACROSS

- 1 Space
- 4 Recipe meas.
- 7 Lass
- 8 Luster
- 10 Calcutta's land
- 11 High, wispy cloud
- 13 Orphan Annie's benefactor
- 16 Really messy place
- 17 Frogs' hang-outs
- 18 Whopper
- 19 Crooked
- 20 Witnessed
- 21 Representative
- 23 Dervish
- 25 "Two and a Half Men" role
- 26 Oodles
- 27 Cacophony
- 28 Colorado tribe
- 30 Chum
- 33 Spider's cousin
- 36 Certain winner
- 37 Assessed
- 38 Tittles
- 39 Iowa State's home



- 40 Scepter
- 41 Scratch
- 8 Meager
- 9 Centers
- 10 Egos' counterparts
- 12 Downhill athlete
- 14 Refuse to
- 15 D.C. fig.
- 19 Stiller or Affleck
- 20 Firmament
- 21 Rap sheet
- 22 Best Picture of 1982
- 23 Bambi, for one
- 24 28-Down, to Tokyo
- 25 Toss in
- 26 Io and Gany-mede, e.g.
- 28 Japanese city
- 29 Homeric epic
- 30 Heavenly gate keeper St. —
- 31 Census stats
- 32 1960s hallucinogen
- 34 Entrance
- 35 Dalai —

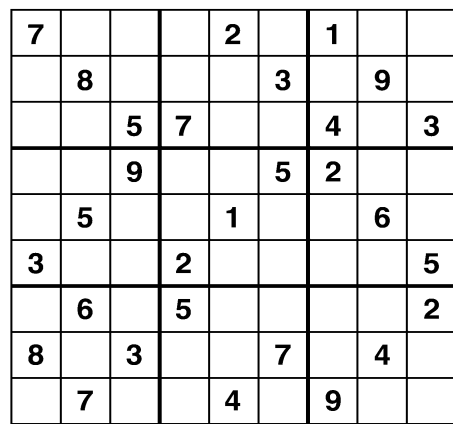
## DOWN

- 1 Lightheartedly silly
- 2 Dry
- 3 Nursery item
- 4 Bronze medalist's place
- 5 Belgrade natives
- 6 Lima's land
- 7 Summertime pest

© 2017 King Features Synd., Inc.

# Weekly SUDOKU

by Linda Thistle



Place a number in the empty boxes in such a way that each row across, each column down and each small 9-box square contains all of the numbers from one to nine.

## DIFFICULTY THIS WEEK: ◆◆◆

- ◆ Moderate
- ◆◆ Challenging
- ◆◆◆ HOO BOY!

© 2017 King Features Synd., Inc.

# Trivia test

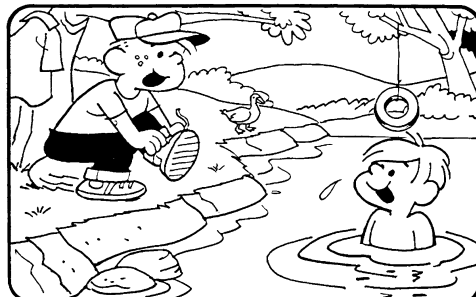
by Fifi Rodriguez

- MOVIES: Which 1974 movie featured a character named Jake Gittes?
- LANGUAGE: What are three letters of the Greek alphabet that begin with the letter "p"?
- HUMAN ANATOMY: What part of the brain regulates body temperature and controls the autonomic nervous system?
- GENERAL KNOWLEDGE: What is a hussar?
- MYTHOLOGY: Which figure in Greek mythology possessed the gift of prophecy?
- GEOGRAPHY: What artificial structure connects the Mediterranean Sea and the Red Sea?
- TELEVISION: Who played the lead role in the drama "Columbo"?
- MUSIC: What Barry Manilow song started with the line "Her name was Lola"?
- GOVERNMENT: What amendment to the Constitution authorized federal taxes on income?
- FOOD & DRINK: What shape is the pasta called farfalle?

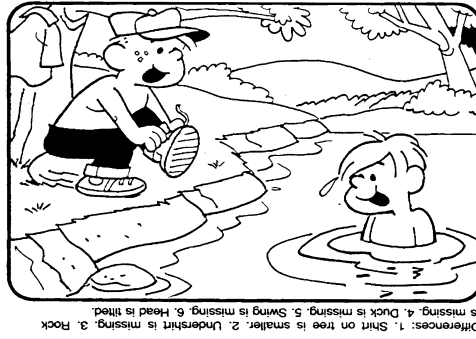
© 2017 King Features Synd., Inc.

# HOCUS-FOCUS

BY HENRY BOLTINOFF



Find at least six differences in details between panels.



© 2017 King Features Synd., Inc.

# CryptoQuip

This is a simple substitution cipher in which each letter used stands for another. If you think that X equals O, it will equal O throughout the puzzle. Solution is accomplished by trial and error.

Clue: I equals P

- ILIEGDS LGM TDODVVDZ BEZQ
- DRLEB NVZEXWEGQ LSZDNQZBX
- BTDB DSQ XTLOJ DZM WTQDI:

"BVZJ RDERGQX."

© 2017 King Features Synd., Inc. CryptoQuip puzzles \$3.50 • 24 Volumes • Order at: rbmamall.com

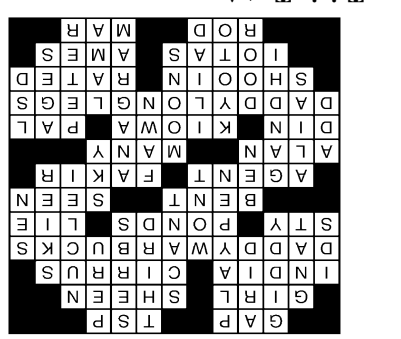
# TWINKIES

Today's Word

- 3. Niche; 4. Details

1. Think; 2. Cover; solution

# SCRAMBLERS



Solution time: 25 mins.

## Answers

- "Chinatown" (Jack Nicholson)
- Psi; pi and psi
- The hypothalamus
- A horsman in a European light cavalry unit
- Cassandra
- Suez Canal
- Peter Falk
- "Copacabana"
- Sixteenth Amendment
- Bows or butterflies

## Weekly SUDOKU

- 1. Think; 2. Cover; solution
- 3. Niche; 4. Details

## CryptoQuip

- Popular old Hawaiian tune
- About minuscule ornaments that are shiny and cheap.
- "Tiny Bubbles."

Keep it local.

Find local businesses.

shoppelocal.biz

Keep it local.

www.shoppelocal.biz