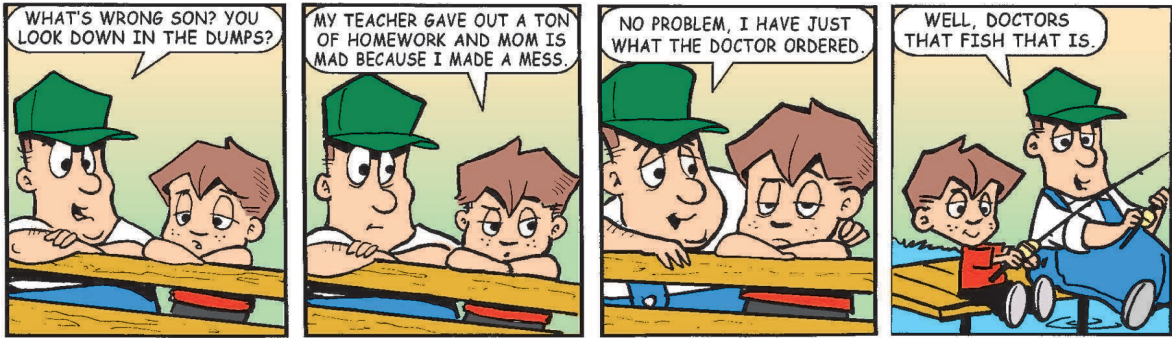


Amber Waves

by Dave T. Phipps



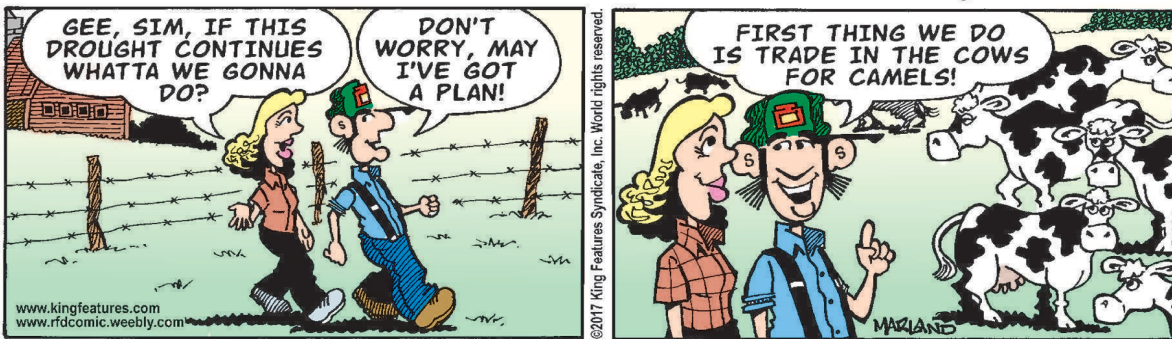
Out on a Limb

by Gary Kopervas



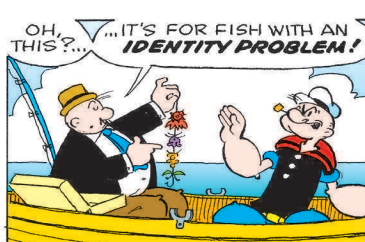
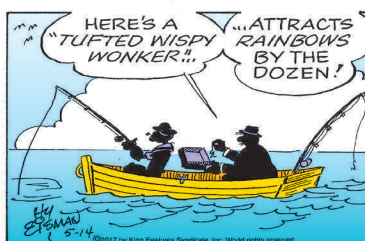
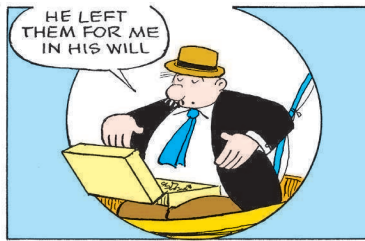
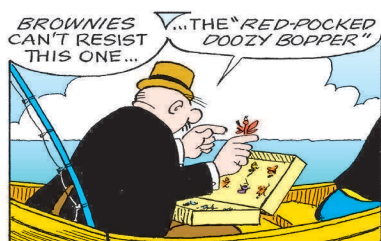
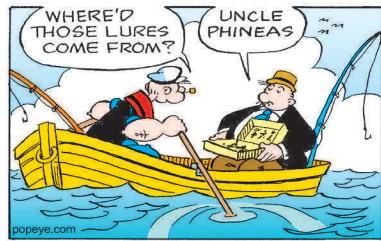
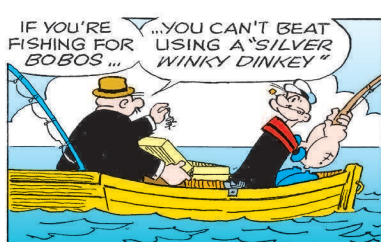
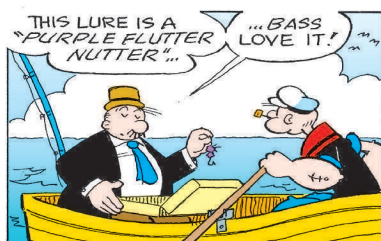
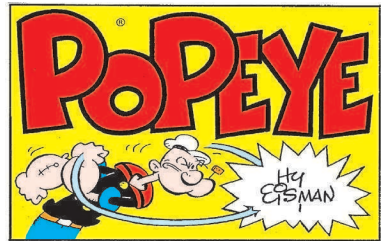
R.F.D.

by Mike Marland



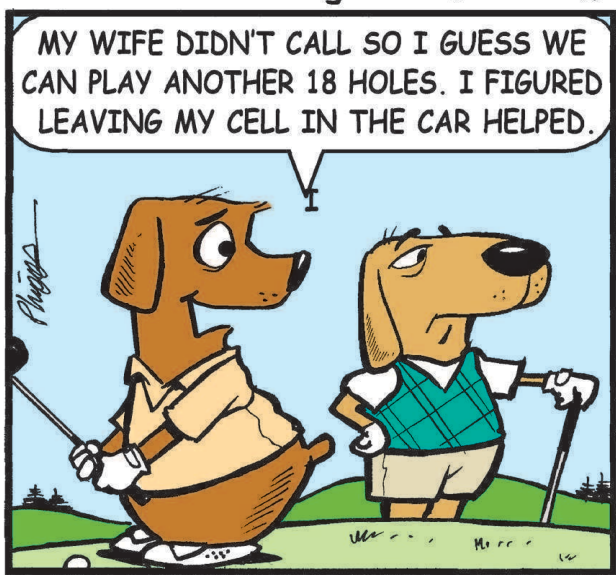
The Spats

by Jeff Pickering



Just Like Cats & Dogs

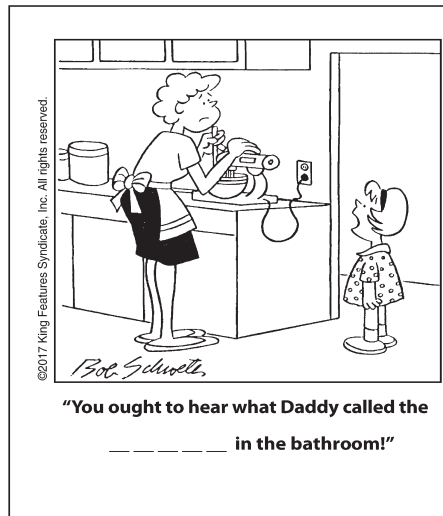
by Dave T. Phipps



LAFF-A-DAY



"Go wash your hands if you want to help with



SCRAMBLERS

Unscramble the letters within each rectangle to form four ordinary words. Then rearrange the boxed letters to form the mystery word, which will complete the gag!

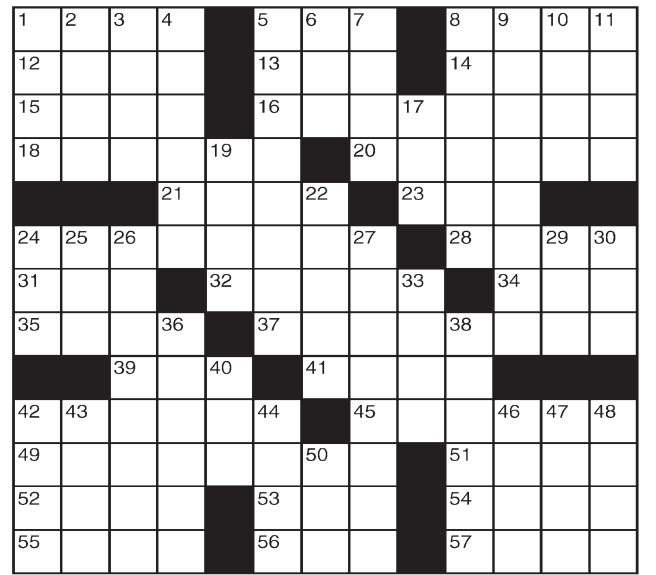
- Issue: OPTIC
- Sully: FIELDE
- Grant: LOLAW
- Slap: SHAB

TODAY'S WORD

King Crossword

ACROSS

- 1 Listen to
- 5 Aries symbol
- 8 Clenched hand
- 12 Part of the foot
- 13 Clean air org.
- 14 Division word
- 15 Stead
- 16 One walking proudly
- 18 Mathematician famed for his "last theorem"
- 20 Lacking vigor
- 21 Pesky kid
- 23 "— Town"
- 24 Criminal in tent?
- 28 Jump
- 31 Huge star
- 32 Mideast nation
- 34 Hot tub
- 35 Candle string
- 37 Go everywhere, as spilled liquid
- 39 Mouth part
- 41 Droplet of sorrow
- 42 Sun-dried brick structures
- 45 Beast
- 49 Furry Pacific denizen
- 51 Corpse

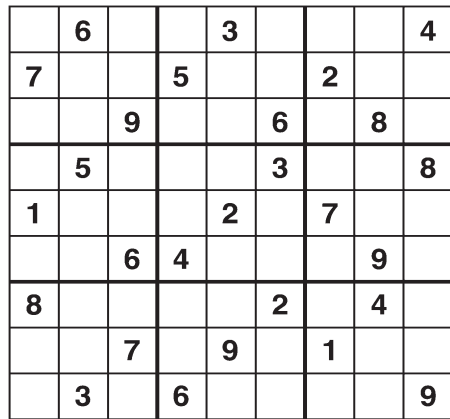


- 52 Sorts
- 53 Nightfall, in verse
- 54 Lotion additive
- 55 Carp or cod
- 56 "— Doubtfire"
- 57 Not as much
- 8 Irregular
- 9 Account extra
- 10 Don't dele
- 11 Ripped
- 17 Venusian vessel?
- 19 Bohemian
- 22 Dangle a carrot
- 24 Away from NNE
- 25 On the — vive
- 26 Removes the cover
- 27 Brushes up on
- 29 Gorilla
- 30 Standard
- 33 Indian flat bread
- 36 Put the — on (stop)
- 38 Clan-related
- 40 Household pooch, e.g.
- 42 "Yeah, right!"
- 43 Sandwich shop
- 44 Goblet feature
- 46 Double agent
- 47 Commotions
- 48 Caustic solutions
- 50 Always, to a bard

© 2017 King Features Synd., Inc.

Weekly SUDOKU

by Linda Thistle



Place a number in the empty boxes in such a way that each row across, each column down and each small 9-box square contains all of the numbers from one to nine.

DIFFICULTY THIS WEEK: ◆◆◆

- ◆ Moderate
- ◆◆ Challenging
- ◆◆◆ HOO BOY!

© 2017 King Features Synd., Inc.

Trivia test

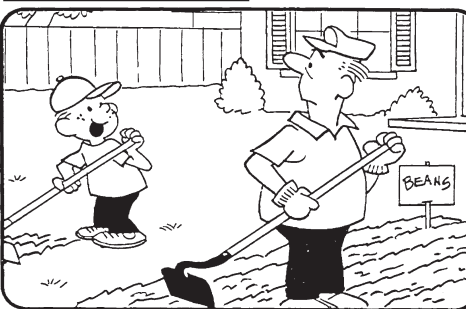
by Fifi Rodriguez

- GOVERNMENT: How many U.S. senators are elected from each state?
- TELEVISION: What is the name of the bartender on "The Simpsons"?
- GEOGRAPHY: What is Canada's southernmost point?
- ADS: What airline used this advertising slogan: "You are now free to move about the country"?
- HISTORY: Which war ended with the 1763 Treaty of Paris?
- FAMOUS QUOTATIONS: What American writer once told Ernest Hemingway, "You are all a lost generation"?
- U.S. STATES: What is the state capital of California?
- FOOD & DRINK: What is the meat used in a dish called tournedos?
- GENERAL KNOWLEDGE: What is the name of a hot-air balloon's basket?
- MUSIC: What pop group had a hit with the 1970 release "I'll Be There"?

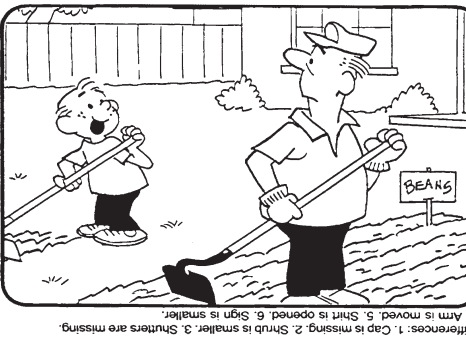
© 2017 King Features Synd., Inc.

HOCUS-FOCUS

BY HENRY BOLTIHOFF



Find at least six differences in details between panels.



Differences: 1. Cap is missing; 2. Shirt is smaller; 3. Shovel is missing; 4. Arm is moved; 5. Shirt is open; 6. Sign is missing; 7. Shovel is missing; 8. Shovel is missing; 9. Shovel is missing.

© 2017 King Features Synd., Inc.

CryptoQuip

This is a simple substitution cipher in which each letter used stands for another. If you think that X equals O, it will equal O throughout the puzzle. Solution is accomplished by trial and error.

Clue: H equals N

MO ANDJYNFL RKQJF ONQ
RJQPKMH YQMZCPIL RINQJF
ANHZYMQFA, DMZCP CJ YJ K
PKHKZJQ DKHKZJQ?

SCALE

Today's Word

1. Topic; 2. Define; 3. Allow; 4. Bash

SCRAMBLERS

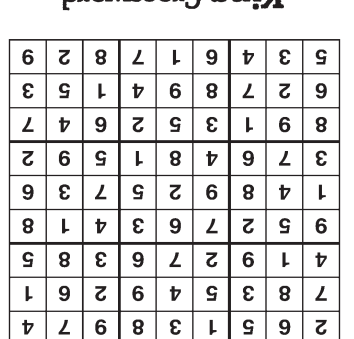
Solution



Solution time: 21 mins.

Answers

King Crossword



Answers

Weekly SUDOKU

