

Amber Waves

by Dave T. Phipps



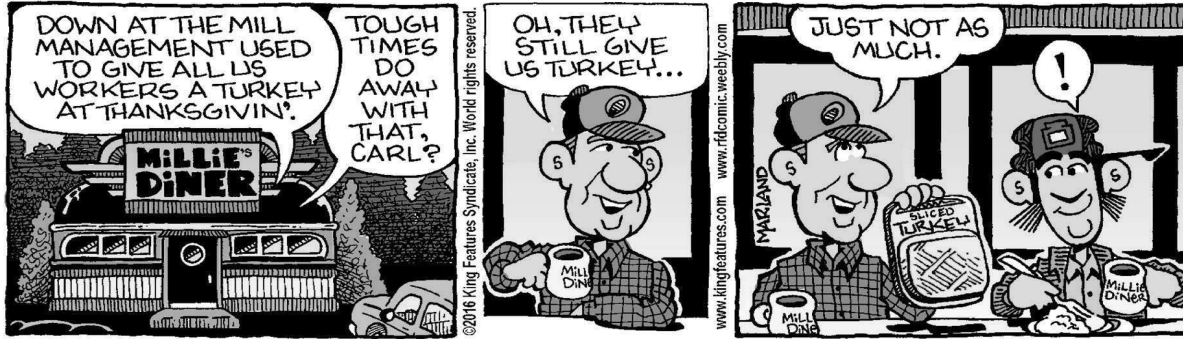
Out on a Limb

by Gary Kopervas



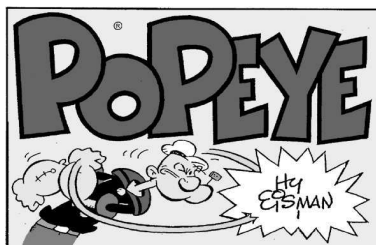
R.F.D.

by Mike Marland



The Spats

by Jeff Pickering

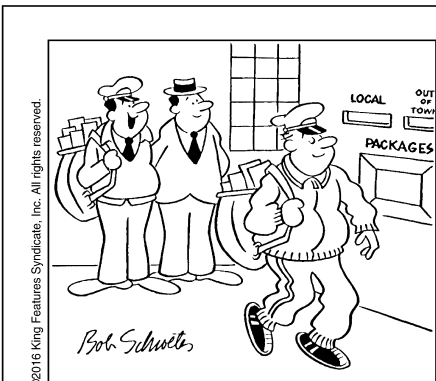
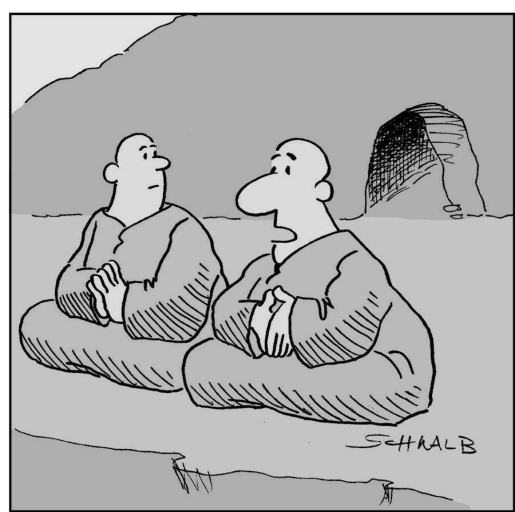


Just Like Cats & Dogs

by Dave T. Phipps



LAFF-A-DAY



SCRAMBLERS

Unscramble the letters within each rectangle to form four ordinary words. Then rearrange the boxed letters to form the mystery word, which will complete the gag!

Key: Obvious: Aware: Laud:

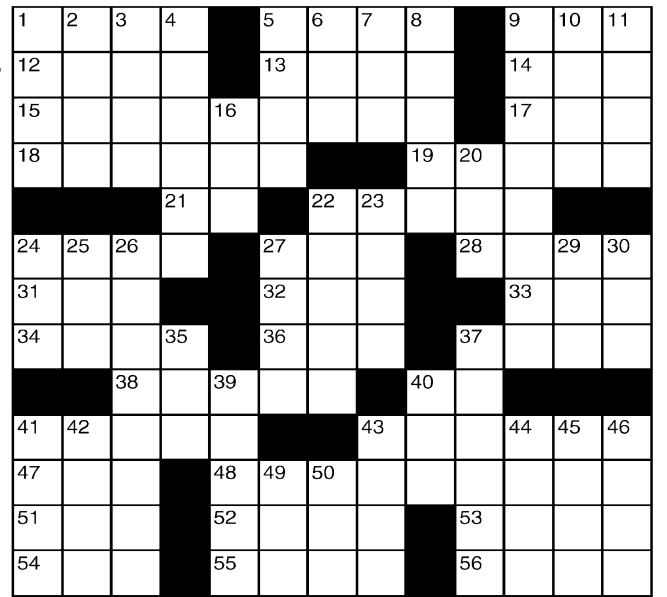
PETALS TROVE SIXTE ARMIED

TODAY'S WORD:

King Crossword

ACROSS

- 1 Wagon
- 5 Part of MYOB
- 9 Young fellow
- 12 Lotion additive
- 13 Small plateau
- 14 Bobby of hockey
- 15 Very hush-hush
- 17 Shell-game item
- 18 "A Streetcar Named Desire" role
- 19 German artist
- 21 Form of 22-Across
- 22 One of the media
- 24 Millinery
- 27 Winter mo.
- 28 Elevator name
- 31 Past
- 32 Whopper
- 33 Spy org.
- 34 Cried
- 36 Pismire
- 37 Dish damage
- 38 Cabbies
- 40 Otherwise
- 41 Bizet work
- 43 Online image
- 47 Mauna —
- 48 Leading comedian
- 51 Gun the engine
- 52 Manitoba native



- 53 Black, in verse
- 54 Whatever number
- 55 Stampeding group
- 56 Went under
- 8 Assessed
- 9 A-one
- 10 Belligerent god
- 11 "Phooey!"
- 16 Shade provider
- 20 2016 Olympics city
- 22 Jockey's handful
- 23 Help a hood
- 24 Hee follower
- 25 Time of your life?
- 26 Lacking balance
- 27 Criticism
- 29 Midafternoon, in a way
- 30 Fool
- 35 Pitch
- 37 Construction site machinery
- 39 Hidden complication
- 40 Eggs
- 41 Callaloo ingredient
- 42 Hammerhead part
- 43 Sleeping
- 44 Forbidden (Var.)
- 45 Soon, to a bard
- 46 — and file
- 49 Raw rock
- 50 Apiece

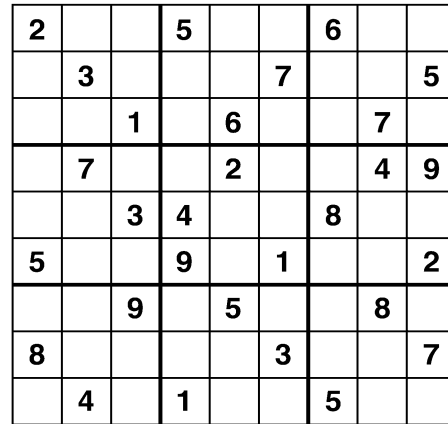
DOWN

- 1 Long-running Broadway musical
- 2 Greatly
- 3 Lariat
- 4 Magnetic flux measures
- 5 Village People hit
- 6 "— the ramparts ..."
- 7 Work with

© 2016 King Features Synd., Inc.

Weekly SUDOKU

by Linda Thistle



Place a number in the empty boxes in such a way that each row across, each column down and each small 9-box square contains all of the numbers from one to nine.

DIFFICULTY THIS WEEK:

- ◆ Moderate
- ◆◆ Challenging
- ◆◆◆ HOO BOY!

© 2016 King Features Synd., Inc.

Trivia test

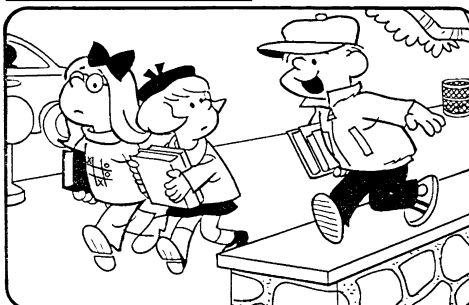
by Fifi Rodriguez

1. TELEVISION: The company of Dunder Mifflin was the location of which television comedy series?
2. GEOGRAPHY: In which U.S. state is Lake Shasta located?
3. MOVIES: What World War II mini-series' title came from a phrase in Shakespeare's "Henry V"?
4. INVENTIONS: What was the 20th-century bathysphere used for?
5. MUSIC: What Beatles' song contains the lyric, "La la how the life goes on"?
6. BUSINESS: At what convenience store can you buy a Big Gulp?
7. FAMOUS QUOTATIONS: What 19th-century Dutch painter once said, "I put my heart and my soul into my work, and have lost my mind in the process"?
8. GENERAL KNOWLEDGE: When did Apple release the first Macintosh computer?
9. U.S. STATES: What is the state of Alaska's nickname?
10. SCIENCE: What is absolute zero in Celsius?

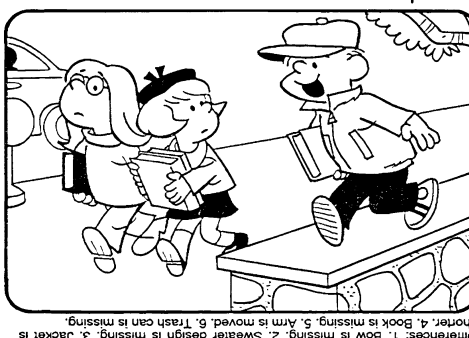
© 2016 King Features Synd., Inc.

HOCUS-FOCUS

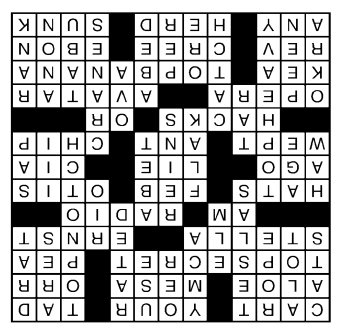
BY HENRY BOLTIHOFF



Find at least six differences in details between panels.



© 2016 King Features Synd., Inc.



Solution time: 25 mins.

Answers

- King Crossword
- Answers:
1. The Office
 2. California
 3. "Band of Brothers"
 4. Undersea exploration
 5. "Ob-La-Di, Ob-La-Da"
 6. 7-Eleven
 7. Vincent Van Gogh
 8. 1984
 9. The Last Frontier
 10. -273 degrees C

CryptoQuip

This is a simple substitution cipher in which each letter used stands for another. If you think that X equals O, it will equal O throughout the puzzle. Solution is accomplished by trial and error.

Clue: R equals H

IRLO JSXVQ XVW VEBLQMLB J
DJXL-JZXZWO RVDUKJN, U QLSAVO
RL IVZDK EL SLDLEQJXUOC RJOAB-
CUMUOC.

© 2016 King Features Synd., Inc.
CryptoQuip puzzles \$3.50 • 24 Volumes • Order at: rbmall.com

SCRAMBLERS

Today's Word

EXPRESS

1. Staple; 2. Overt; 3. Exist; 4. Admire

Find everything you need this season without leaving town

shoppelocal.biz

Cottage Grove Sentinel

shoppe Keep it local.