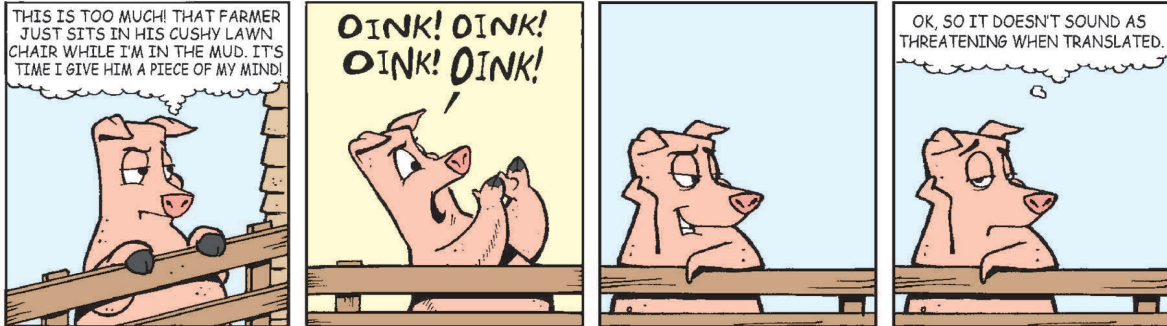


Amber Waves

by Dave T. Phipps



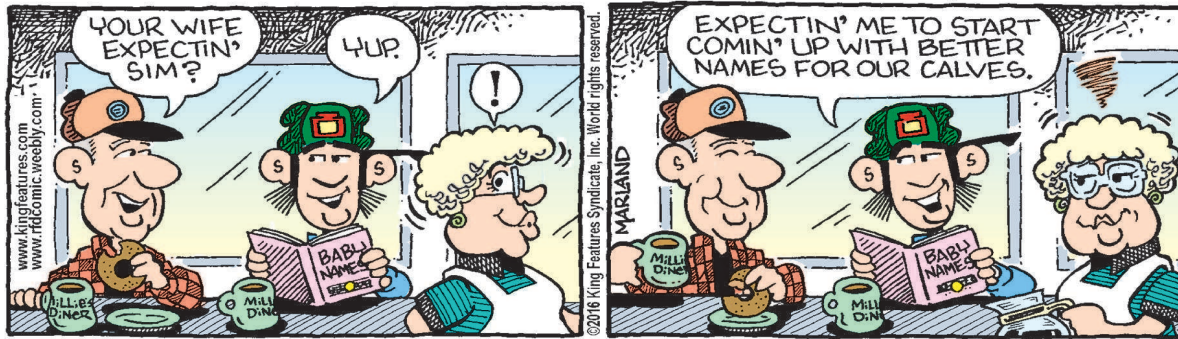
Out on a Limb

by Gary Kopervas



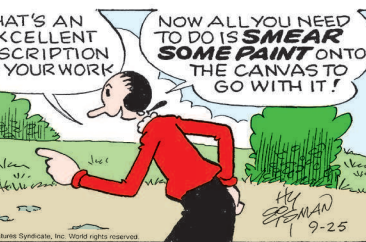
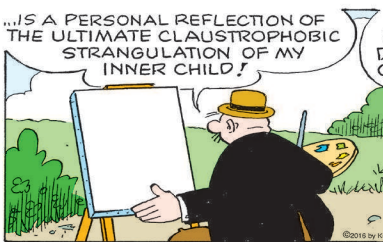
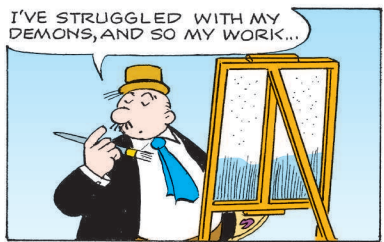
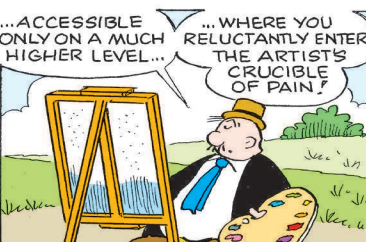
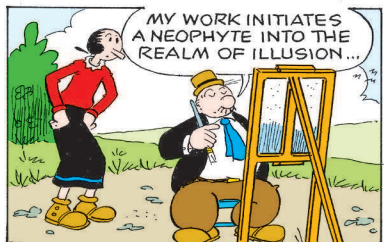
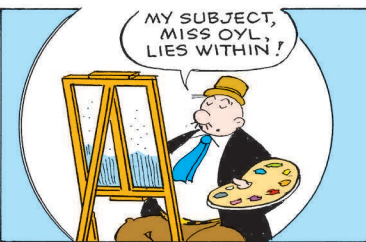
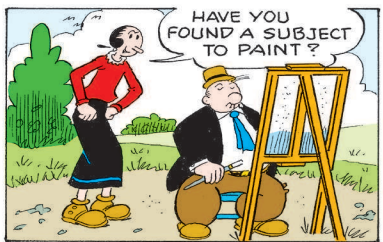
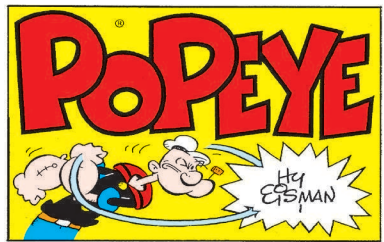
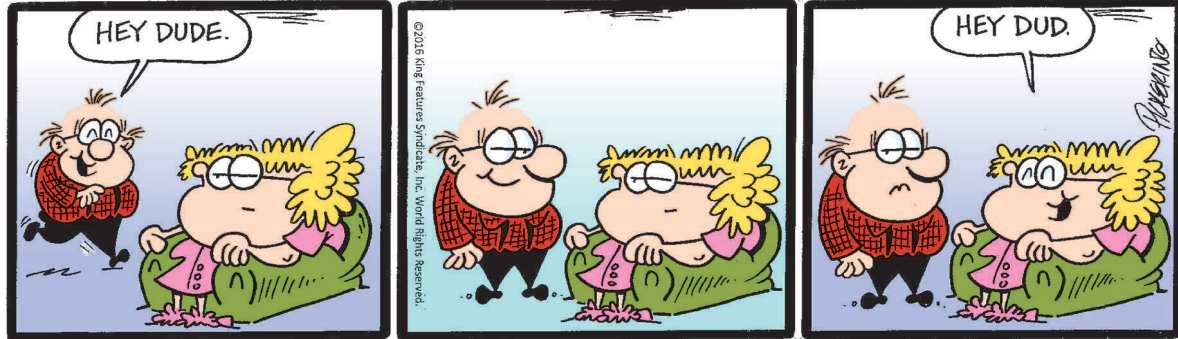
R.F.D.

by Mike Marland



The Spats

by Jeff Pickering

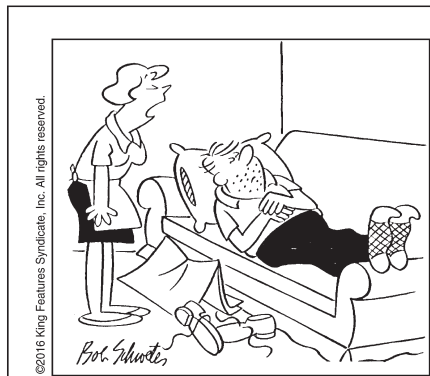
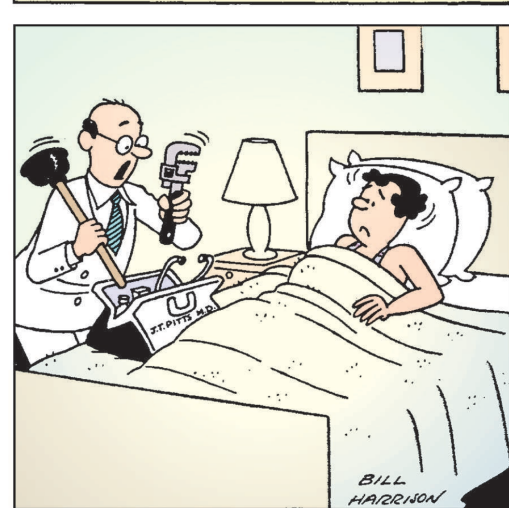


Just Like Cats & Dogs

by Dave T. Phipps



LAFF-A-DAY



"It's too beautiful a day to waste indoors — you ought to be loafing in the outside!"

SCRAMBLERS

Unscramble the letters within each rectangle to form four ordinary words. Then rearrange the boxed letters to form the mystery word, which will complete the gag!

React
PONDERS _____

Crisis
SPASMIE _____

Phony
MASH _____

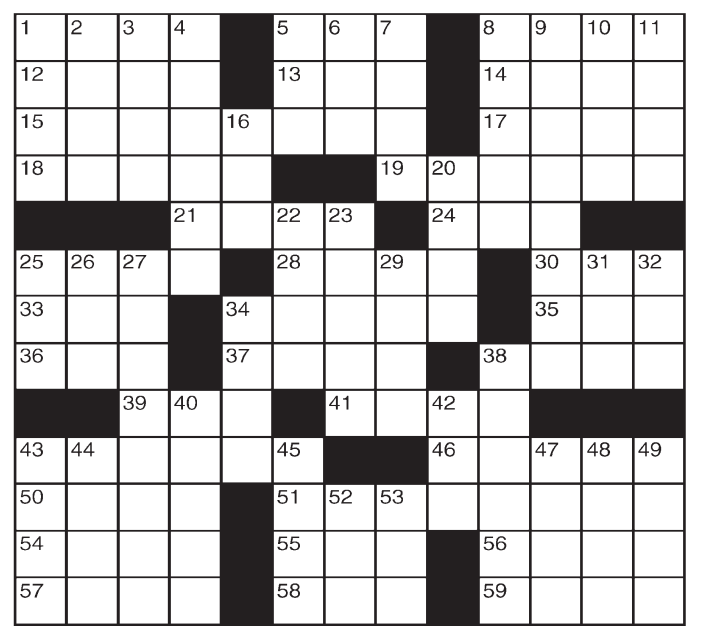
Dotted
PLEECKS _____

TODAY'S WORD _____

King Crossword

ACROSS

- 1 Baccarat alternative
- 5 Every iota
- 8 Mope
- 12 Soon, to bards
- 13 Lawyer's due
- 14 Leg joint
- 15 Ocean swimmer's worry
- 17 "An apple — ..."
- 18 Poor
- 19 Loving grandparents, often
- 21 Receives
- 24 "— the ram-parts ..."
- 25 Verifiable
- 28 Aid
- 30 Watch
- 33 Attila, e.g.
- 34 Memoranda
- 35 "A mouse!"
- 36 See 25-Down
- 37 Ford or Lincoln
- 38 Having Y chromosomes
- 39 Shade provider
- 41 Formerly
- 43 British conservatives
- 46 Say
- 50 Tosses in
- 51 Too young
- 54 Mob scene



- 55 Regret
- 56 Press
- 57 Cribbage
- 58 Suffer a recession?
- 59 Expense

DOWN

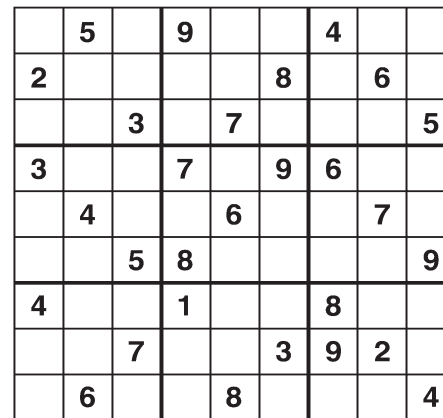
- 1 Mythical man-goat
- 2 Heche or Hathaway
- 3 Was a passenger
- 4 Nervous
- 5 Sternward
- 6 Zodiac sign

- 7 Lascivious
- 8 Glide
- 9 In Cousteau's realm
- 10 Mad king of literature
- 11 Piano lineup
- 16 Deli bread
- 20 "My bad"
- 22 Biblical pronoun
- 23 Squabble
- 25 With
- 26 Skedaddle
- 27 Likely loser
- 29 Rock group, Kings of —
- 31 Moray, e.g.
- 32 — out a living
- 34 Appellation
- 38 Measured in grams, e.g.
- 40 Rosters
- 42 Prompt
- 43 Rainout need
- 44 Garfield's pal
- 45 Certain
- 47 Poi base
- 48 Hollywood clasher
- 49 Landlord's due
- 52 Essence
- 53 Society newbie

© 2016 King Features Synd., Inc.

Weekly SUDOKU

by Linda Thistle



Place a number in the empty boxes in such a way that each row across, each column down and each small 9-box square contains all of the numbers from one to nine.

DIFFICULTY THIS WEEK: ◆

- ◆ Moderate
- ◆◆ Challenging
- ◆◆◆ HOO BOY!

© 2016 King Features Synd., Inc.

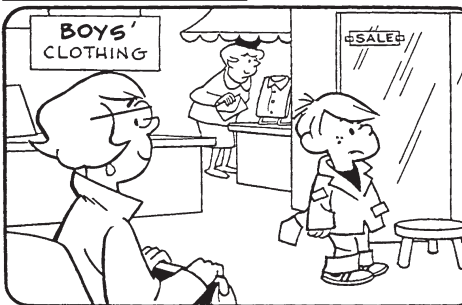


1. COMICS: What is the name of Batman's butler?
2. LITERATURE: Who is the leader of the wolves in "The Jungle Book"?
3. GEOGRAPHY: Which two islands in the Mediterranean Sea are governed by Italy?
4. U.S. PRESIDENTS: Who was president during World War I?
5. HISTORY: What was the name of the airship that exploded over New Jersey in 1937?
6. LANGUAGE: What is a baby's pacifier called in Great Britain?
7. EXPLORERS: What was the name of Christopher Columbus' flagship?
8. NICKNAMES: What U.S. city calls itself "The Biggest Little City in the World"?
9. MEDICAL: What is the modern name for a disease once called "consumption"?
10. FAMOUS QUOTATIONS: What children's author wrote, "You have brains in your head. You have feet in your shoes. You can steer yourself in any direction you choose"?

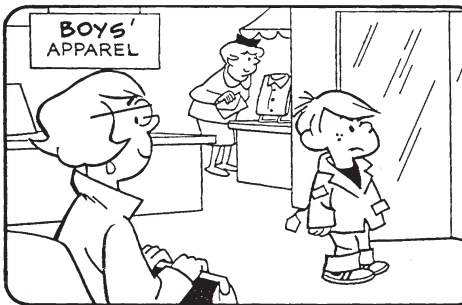
© 2016 King Features Synd., Inc.

HOCUS-FOCUS

BY HENRY BOLTINOFF

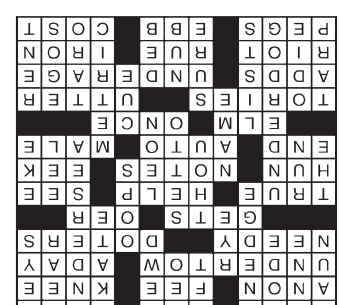


Find at least six differences in details between panels.



Differences: 1. Sign is different. 2. Aiming is shorter. 3. Arm is moved. 4. Tag is smaller. 5. Sale sign is missing. 6. Sign is missing.

New! 24 HOCUS FOCUS puzzles \$3.50 • 24 Volumes • Order at: rbmall.com



Solution time: 25 mins.

Answers

CryptoQuip

This is a simple substitution cipher in which each letter used stands for another. If you think that X equals O, it will equal O throughout the puzzle. Solution is accomplished by trial and error.

Clue: M equals R

QAXH ZXOUAXMQLMDXMR RNHY, N
UANHD UAXW'MX JMLFOFZW REJXM
OU FXZUNHY LEU UHXR.

© 2016 King Features Synd., Inc.
CryptoQuip puzzles \$3.50 • 24 Volumes • Order at: rbmall.com

HAMMOCK

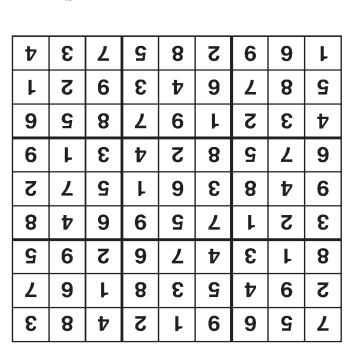
Today's Word

- 1. Respond; 2. Impasse;
- 3. Sham; 4. Speckle

solution

SCRAMBLERS

King Crossword



Answer

Weekly SUDOKU

When leaverworkers sing, I think they're probably singing at betting out tunes.

Keep it local.

Find local businesses.

shoppelocal.biz

Keep it local.

www.shoppelocal.biz