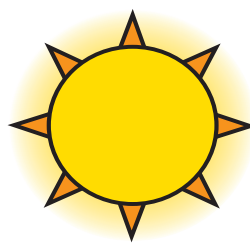
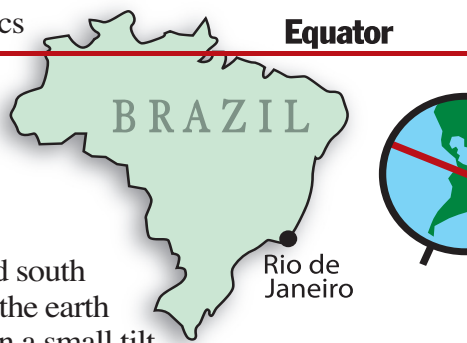




Brazil: Summer Games in Winter?

While the 2016 Olympics are called the Summer Games, it is actually winter in Brazil where the games are being held.



Most of Brazil is located south of the equator. Because the earth rotates around the sun on a small tilt, seasons are different north and south of the equator.

the sun, but because where it is summer, the planet is tilted towards the sun.

In Brazil, June, July and August are the winter months, while summer is in December, January and February.

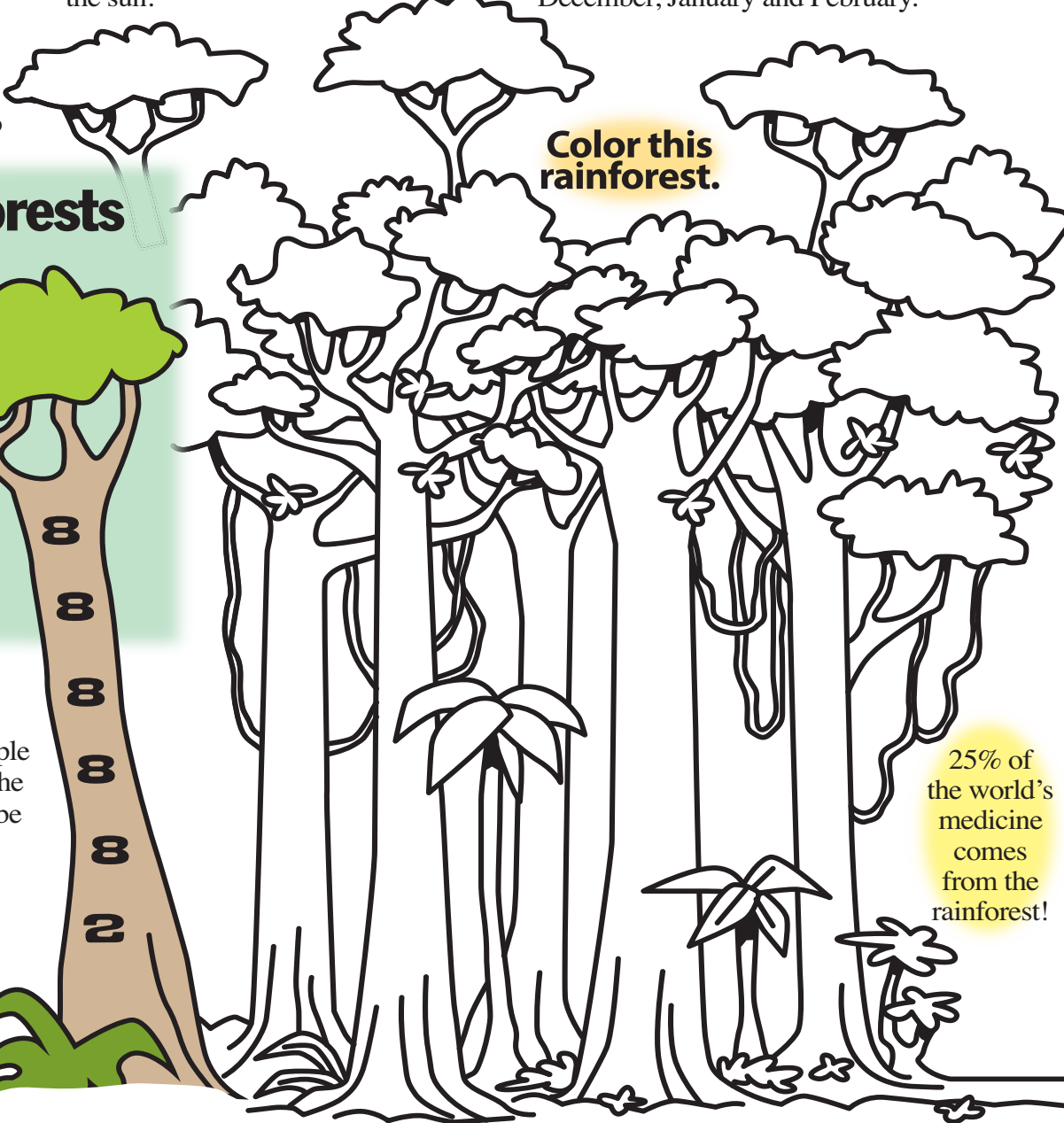
Summer is the warmest time of the year. Not because the planet is closer to

Amazonian Rainforests

The land around the Amazon and its tributaries make up the largest rainforest in the world. Like its name says, it rains a lot there.

The western Amazon region gets about 160 inches (400 cm) per year. Add up the numbers on this tree to find out how much New York City gets on average.

_____ inches (107 cm)



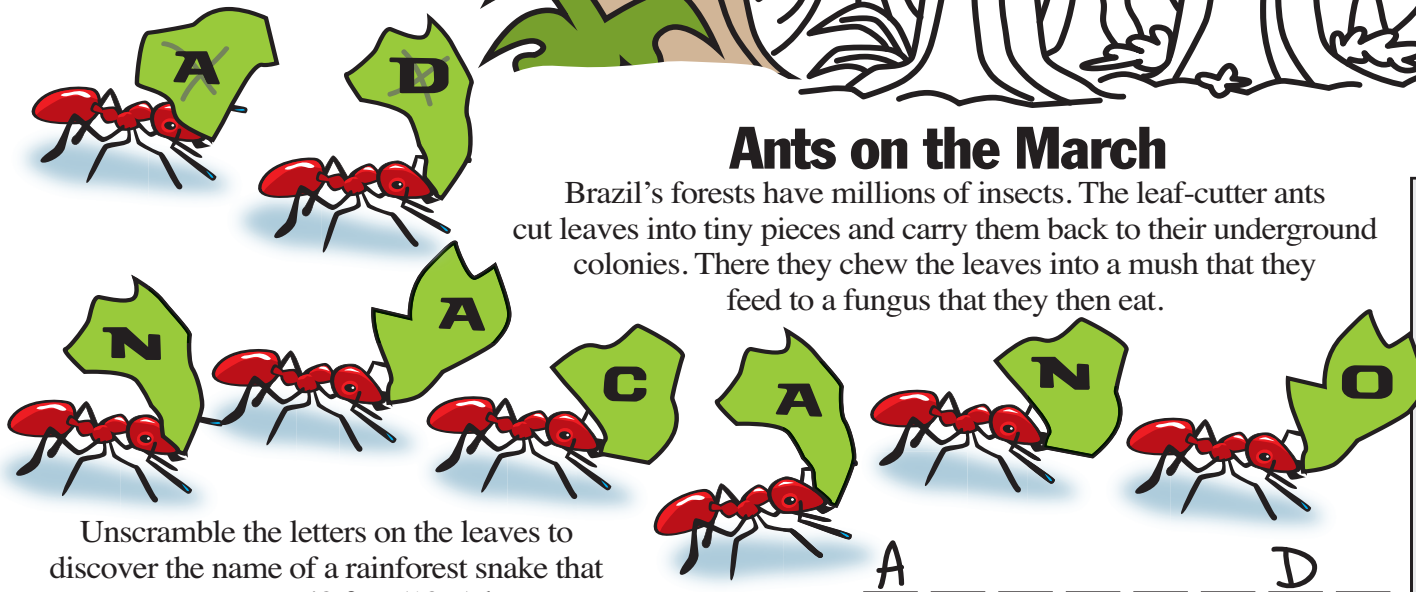
25% of the world's medicine comes from the rainforest!

Rainforest Rubber

Amazonian Indians were the first people to make rubber. They found a tree in the rainforest with a white sap that could be used as an insect repellent and they made their feather robes waterproof. The Indians learned that when heated over a fire, the sap thickened to make rubber. They used this rubber to make shoes and balls.

Ants on the March

Brazil's forests have millions of insects. The leaf-cutter ants cut leaves into tiny pieces and carry them back to their underground colonies. There they chew the leaves into a mush that they feed to a fungus that they then eat.



Unscramble the letters on the leaves to discover the name of a rainforest snake that can grow up to 40 feet (12m) long.

Extra! Extra! Signs of the Season

Look through the newspaper for signs of summer. Cut them out and make a "Summer Where I Live" poster.

Standards Link: Research: Use the newspaper to locate information.

Kid Scoop Puzzler

The green on Brazil's flag stands for its forests and fields. Yellow is for the country's rich deposits of gold. The blue circle represents the night sky and its twenty-seven stars are for Brazil's 26 states.



The stars are arranged in the constellations that were visible the day Brazil became independent from Portugal. The phrase *ORDEM E PROGRESSO* is also on the Brazilian flag.

Circle every other letter to see what the words **ORDEM E PROGRESSO** mean in English.

T O D R B D N E K R L A T N V D Q P T R J O W G H R L E R S M S
O R

Standards Link: Reading Comprehension: Follow simple written directions.

Double Double Word Search

- WATERPROOF
- OLYMPICS
- EQUATOR
- WINTER
- PLANET
- BRAZIL
- TILTED
- FUNGUS
- RUBBER
- AMAZON
- LEAVES
- SHOES
- RAINS
- FIRE
- SAP

Find the words in the puzzle. Then look for each word in this week's Kid Scoop stories and activities.

E	W	A	D	E	T	L	I	T	R
M	Q	W	P	I	I	N	W	S	T
A	R	U	L	Z	E	I	R	C	F
M	U	R	A	I	N	S	S	I	S
A	B	R	N	T	A	E	R	P	U
Z	B	G	E	P	O	E	A	M	G
O	E	R	T	H	M	R	E	Y	N
N	R	S	S	E	V	A	E	L	U
W	A	T	E	R	P	R	O	O	F

Standards Link: Letter sequencing. Recognized identical words. Skim and scan reading. Recall spelling patterns.

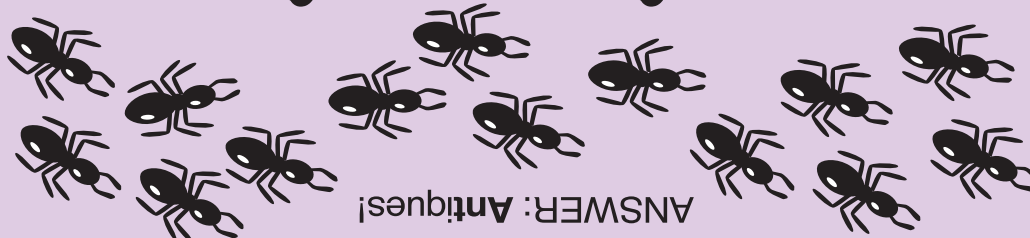
FROM THE Kid Scoop LESSON LIBRARY

Describe Brazil

After reading today's Kid Scoop page, look through the newspaper for five or more adjectives that describe Brazil. Cut them out, paste them on a piece of construction paper you have cut into the shape of Brazil.

Standards Link: Language Arts: Identify adjectives.

What do you call 100-year-old ants?



Write On!

Make a Difference

Tell how you make a difference in someone's life within your family, your school, or in your community.

Deadline: August 21
Published: Week of Sept. 18
Send your story to:

Please include your school and grade.

Find local businesses.
shoplocal.biz

Cottage Grove Sentinel + shoppe

Keep it local.



www.shoplocal.biz