

# Vigil shows solidarity for assault victim

BY SAM WRIGHT  
The Cottage Grove Sentinel

On Tuesday evening, residents of Cottage Grove and around Lane County gathered near Main Street at Opal Whiteley Park, where the Community Alliance of Lane County and the Rural Organizing Project hosted a vigil for the victim of an assault that happened a few days earlier.

The assault has been called a hate crime by many and several news outlets, as the assailant allegedly yelled gay slurs to the victim during the attack, but police haven't confirmed if it was actually a hate crime.

Regardless, Grovers showed support for the victim at the All-America City Square, waving rainbow flags and signs against hate.

Co-director of the Rural Organizing Project Jessica Campbell says that many citizens have been shocked about the incident.

"I thought this was a community where people could live their lives with safety," Campbell said, describing the general mood of the community.



photo by Sam Wright

All-America City Square was the site of a vigil held last week to support the victim of an assault on June 13.

bell said, describing the general mood of the community.

For two hours, citizens preached messages of love as the vigil was dubbed "Standing Together Against Hate." Cars driving by would occasionally honk in support of the message. The victim did not attend the vigil, although reportedly cherishes the support from other

community members.

"It was a huge trauma," Campbell said, "but he is really reinvigorated by the community support he has seen."

The vigil also stood as Cottage Grove's tribute and support for the victims of the Orlando shooting over the previous weekend.

# Council talks marijuana buffer zones, facilities

BY GORDON OKUMU  
For the Sentinel

The sale and purchase of marijuana for recreational consumption became legal in Oregon for those over 21 years of age on Oct. 1, 2015, and in Cottage Grove, medical marijuana dispensaries have until recently been the only outlets able to lawfully sell recreational marijuana.

On Monday, June 13, the Cottage Grove City Council discussed marijuana regulation in the City.

With all the councilors present, Mayor Tom Munroe called the meeting to order at 7 p.m. as an eager public followed and participated in the over one-hour discussion.

As the discussion started, many questions were raised, including:

Can the City mandate that marijuana businesses be located away from where kids are playing and are able to see the business?

Is there any research or can any research be done to determine if there are gases coming from the marijuana processing plants and how harmful these gases may be to the community?

How many places within the City should be set aside for marijuana businesses? Do we need marijuana stores on every corner of the street?

City Manager Richard Meyers responded by saying that the state is already inquiring on any gas or smell emissions from these plants in an attempt to find out if they are harmful.

Councilor Jeff Gowing had a different approach; he said that it seemed like people have little information about the issue altogether.

"I don't think it can be harmful for kids to see the marijuana shops around; the stores are not harmful to the kids unless there is something else that should be feared," he said.

The Council's youth representative chimed in and said that all these facilities can be tested and it can be proved if there is indeed any harmful gas present.

"We can test these the same way we test water," he said.

This did not seem to convince Sherry Adams, a resident of Cottage Grove, who said that marijuana manufacturing facilities should not be situated in a residential area and should instead be taken to an industrial area.

A presentation was made and a proposal put forth on a 100-foot buffer from parks to ensure safety for all those at the parks. The presenter said that this buffer would keep marijuana manufacturing facilities clear of school areas, residential areas and community parks.

But many questioned what solution the buffer zones could offer, and the Council's discussion is ongoing.

The state has two types of recreational marijuana producer licenses, based on the size of the grow site and whether marijuana is grown indoors or outside. The first type allows up to 5,000 square feet indoors or 20,000 square feet outdoors. The second type allows for up to 10,000 square feet indoors and 40,000 square feet outdoors. The larger license costs \$5,750.

# Meeting details proposed park changes

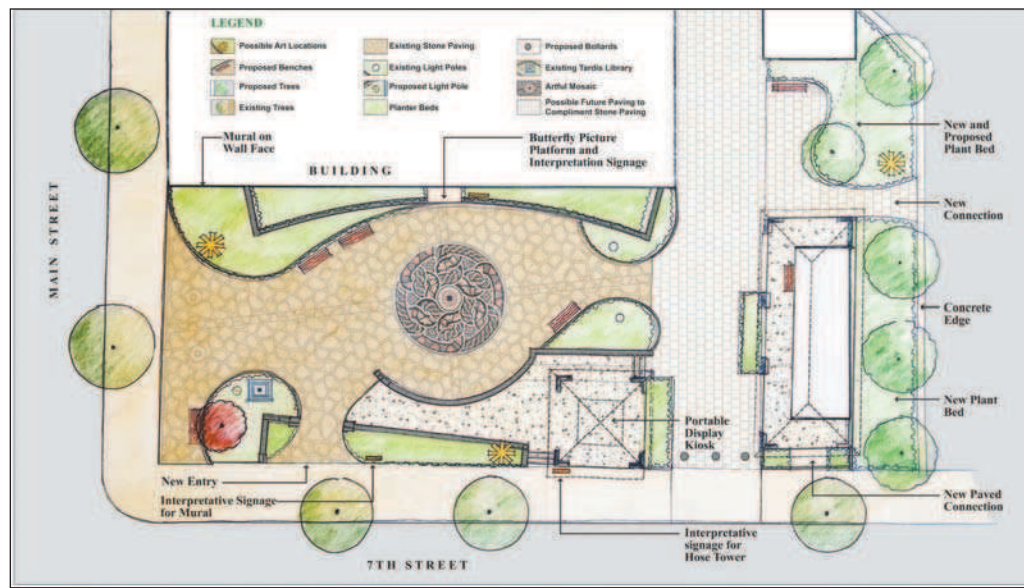
BY JON STINNETT  
The Cottage Grove Sentinel

The third in a series of meetings meant to guide the future of a downtown Cottage Grove park featured the presentation of an in-depth report on changes that could be made there.

The City of Cottage Grove recently received a \$3000 grant to envision and plan updates to All-America City Square, a/k/a Opal Whiteley Park, located at the corner of Seventh and Main streets downtown. Public meetings were held in May at the nearby CG Armory to gauge the issues present in the now 10-year old park. On Tuesday, June 14, about 20 interested citizens joined representatives of the City's Planning Department and Dougherty Landscape Architects to peruse the final report regarding the park.

"The park...is showing some wear, particularly in the flagstone paving and retaining walls, and the vegetation has become dense," the report's introduction stated, adding that "some elements of the park's design were never completed" and "complaints have been made that the design of the park limits" some of its uses.

According to the report, which compiled comments from the public, the park's most pressing issues aside from its maintenance



courtesy graphic

This drawing shows proposed changes to All-America City Square, a/k/a Opal Whiteley Park. It was presented to the public on June 14.

concerned the flow of traffic through the area, and a design detailing its proposed changes includes a new entrance to the park on Seventh Street, in addition to access at the southern end from a nearby parking lot. The need to remove a circular planter in the center of the park was also widely agreed upon.

The report recommends the removal of the planter and the addition of an "artful paving/mosaic" in its place. It calls for refurbishing the Opal Whiteley mural that looks down on the park, interpretive signage to describe the mural and Whiteley's local connection, the

Please see **PARK**, Page 11A



## Local Coverage Where You Work, Play & Live

New Subscribers,

Catch up on local news, sports, shopping deals, events, new businesses, politics, job openings, homes for sale, cars for sale and more with your local newspaper!

**Get 1 Year for \$29!**  
Call us today to get started.

**Like us on Facebook** and save an additional \$3.00  
Must be a New Subscriber or not had a subscription during the last 12 months. All Subscriptions must be paid in advance and are non-refundable. Offer Expires 6/24/16

# Cottage Grove Sentinel

In Print & Online

541-942-3325  
www.cgsentinel.com





**YOSS TEAM**  
REAL ESTATE PROFESSIONALS  
*Discover the power of true teamwork!*



**SHERRY YOSS**  
541-554-2044  
GRI, Broker,  
Multi-Million \$ Producer



**TAWNY LOWREY**  
541-554-2044  
GRI, Broker,  
Multi-Million \$ Producer

**914 9th (Hwy.99) • Cottage Grove, OR • 541-942-4040**

---

**FEATURED HOMES • FEATURED HOMES • FEATURED HOMES • FEATURED HOMES**



**1360 Anthony:** Updated and move-in ready 3 bdrm, 1.5 bath home on huge .23 ac. lot w/RV parking. Owner motivated! **\$198,000**



**OPEN HOUSE SUNDAY 1-3PM**  
**199 River Walk:** 3 bdrm, 2 bath, 1402 Sq Ft home built in 2009 w/ open layout, awesome kitchen and landscaped fenced backyard. **\$219,000**



**1104 Ash:** Immaculate, updated & spacious 3 bdrm, 2 bath, 1836 Sq Ft home with unfinished bonus room over garage! **\$259,900**



**342 Quincy: Owner Motivated.** Lots of room! Large Turn of the Century 4+ bdrm, 2 bath home with 2340 Sq Ft, wrap around front porch, formal dining, family room and bonus room over garage. \$239,900 or with adjoining lot. **\$260,000**

**WE HAVE BUYERS!  
WE NEED LISTINGS!**