

Cottage Grove Retrospective

A look back at a Sentinel story from 60 years ago

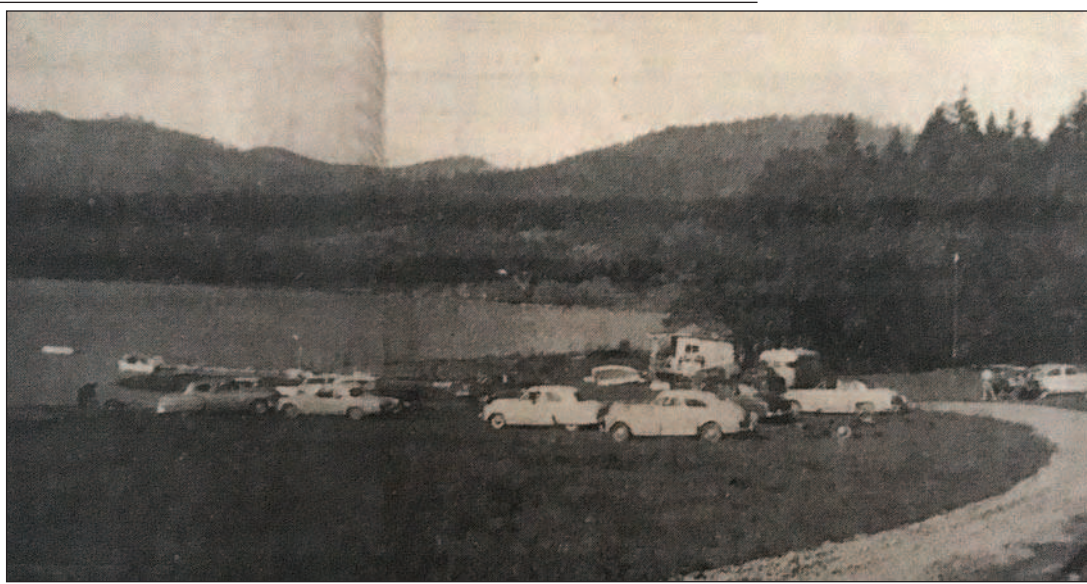
May 17, 1956

Dedication of Baker Bay Recreation area and boat races to be June 3

Dorena Dam at Baker Bay recreation area, seven miles east of Cottage Grove, will be the scene of boat races on Sunday, June 3. The races will be held in conjunction with the dedication of the recreation area. The dedication will start at 12:45 p.m. with speeches by local dignitaries and the races will get under way promptly at 1:30.

Two classes for local fish boats will be run, entrance determined by the size of hull and cubic inch displacement of the motor.

In addition to the races for fish boats, there will be 12 heats of professional racing (48 and 136 inboards, B and D utility runabouts, B and D hydroplanes).



Baker Bay recreation area, on Dorena reservoir, will be dedicated Sunday, June 3. Boat races, sponsored by Oregon Motor Boat Racing association and endorsed locally by Hesse's Baker Bay Recreation, will be the main feature of the day. Baker Bay is a popular fun area, as is shown by the autos in the above picture, taken last Sunday. This shows only a portion of the area, with Hesse's in the background.

Chariman of the race will be Ned Collett of Eugene. The race will be sponsored by Oregon Motor Boat Racing Association, an organization comprised of racers from all over the state. Among the local participants

will be Harley Lassen, Bruce Lassen and Ned Collett from Eugene and Douglas Huey from Junction City. National champions expected to be present are Paul Woodroffe and Dean Mahaffy from Salem.

Boats from Washington, Oregon and California will participate. Spectators will see some of the fastest racing outfits on the Pacific coast.

CITY BEAT

From the City's Friday Update

Economic outlook

City Manager Richard Meyers and Finance Director Bert Olsen attended the Annual Economic Outlook breakfast featuring a presentation from Economist John Mitchell. The presentation covered important aspects of the federal, state and local economies to provide insight what to expect for 2016. He highlighted the slow and steady economic growth, the low unemployment rates for the country and even lower for Oregon (lowest since unemployment data collection began), 5.5 million jobs above the peak number of jobs in January, 2008 and the low interest rates and corresponding low inflation rate. This annual event was sponsored by US Bank and provides an excellent opportunity to gain insights into the local economic condition.

gram or a copy of the informational brochure, which outlines the specific program guidelines, please call the Public Works Department at (541) 942-3349, stop by the Public Works office located in City Hall, or go to the City's website at www.cottagegrove.org.

Free audio books for teens

The Cottage Grove Public Library is excited to promote a program that provides two free audio books per week from May 5 to Aug. 17. For complete details and to download your first free audio book, go to: www.audiobooksSYNC.com.

Kindergarten trip to the Library

This week, the Cottage Grove Public Library welcomed a class of kindergarten children from Bohemia Elementary School for a field trip to the library. The class was welcomed with a live performance by the adult ukulele class who sang, "You are my Sunshine" to the kids. Next, they learned a little about architecture from Pete Barrell, Community Services Director, who showed them designs for a new library that were done by a University of Oregon Architecture class. They then had a tour of the library and story with Children's Librarian, Valarie Johns.

sOregon Public Fleet Summit

This week, Shop Administrative Aide Melissa Keenan attended the Oregon Public Fleet Summit in Redmond, which aims to provide fleet management training to improve fleet concepts and processes to streamline operations. Specific topics included calculating public fleet rates, fleet management information systems, effective preventive maintenance, quality assurance, and maintenance performance measures.

Influent auto sampler

This week, Wastewater Treatment Plant Staff took delivery on a Teledyne-Isco Refrigerated Auto Sampler, which samples wastewater that flows into the plant every 30 minutes, 24 hours a day. DEQ requires a 24-hour composite sample of Cottage Grove's wastewater, which is then analyzed by plant staff in the treatment plant lab. The composite sample is tested for BOD, suspended solids, phosphorus pH, and ammonia. The City says the automatic sampler is needed because plant staff is only on site from 8-5, seven days a week. The Isco sampler replaces a 10-year old sampler that was installed when the plant was expanded in 2006. The cost of the new sampler is approximately \$6,000.

Tree branch pickup begins May 23

The City of Cottage Grove's annual tree branch pickup will begin Monday, May 23. The Public Works crew will pick up branches that are placed in street parking areas during that week only. For questions regarding the Tree Branch Pickup Pro-

POLICE BLOTTER

Cottage Grove Police Department 24-Hour Anonymous Tip Line: 767-0504

May 9

Theft, Birch Ave

A complainant at the station came in to report the theft of a Bernie Sanders political sign from his property. The complainant declined to put in a formal report.

Dog at large, Ash Ave.

A caller advised that there is a small older dog that is half-shaved that has been in his yard all day. Police resolved the issue and found the dog's owner.

Trespassing, Polk Ave.

A caller advised that she is having ongoing issues with the neighborhood teens trespassing on her property. She has tried to talk to the kids and parents but her concerns were disregarded. She is starting to feel uncomfortable in her home. The guardians of the kids were advised of the complaint.

May 10

Disturbance, E. Main St.

A complainant advised that there was a male sitting on a

bench smoking either marijuana or crack out of a pipe; the subject was screaming and yelling. The man was advised of the complain by police and moved on.

Trespass, L St.

A caller advised that several teenagers have entered a vacant house. The house is on the south west corner of Ash and L St.

May 12

Criminal Mischief, Chambers Bridge

Finance received a call from a citizen to advise of swastikas and genitalia written on the signs and garbage cans around the bridge.

Warrant Service, E Main St. PD

An arrestee was in custody on Lane County circuit court for a failure to appear in court. The original charges were possession of meth, DUII and reckless endangering.

Trespassing, Spirit Trail

A caller advised that there is a camp set up on the Spirit Trails, right on the trail by the soccer field. Police made no contact

and didn't find anyone.

May 14

Criminal Mischief, Bohemia Park

A complainant advised by his son that there are a group of juveniles putting urine and feces on the slides in the park. A second caller advised that the suspects left the location. A work order was put in to public works for more thorough cleaning.

Suspicious Condition, E. Regional Park

A complainant advised that she is near the entrance to the park and has located a blue tarp with yard clippers next to it and there was a very foul smell coming from it.

May 15

Civil Problem, N 8th St.

A caller requested officer contact to report that his neighbor is clear cutting trees from property that the caller believes is owned by the City. The officer contacted the involved parties and advised the parties to contact city planning to resolve the issue.

Douglas G. Maddess, DMD

FAMILY AND GENERAL DENTISTRY

Brightening Lives One Smile at a Time



Comprehensive Family Dentistry
Now Offering Digital X-Rays
Financing Options Available
Welcoming New Patients
Call for an appointment today!



914 South 4th St. • CG • 541-942-1559
See our new website:
douglasgmaddessdmd.com

6-day weather forecast

THURSDAY May 19

43° | 53°

Rain

FRIDAY May 20

45° | 59°

Poss. Showers

SATURDAY May 21

46° | 53°

Poss. Showers

SUNDAY May 22

47° | 62°

Poss. Showers

MONDAY May 23

47° | 66°

Mostly Cloudy

TUESDAY May 24

48° | 69°

Mostly Cloudy

COTTAGE GROVE HOUSEHOLD HAZARDOUS WASTE ROUND-UP



SATURDAY
JUNE 4 • 8-2

SOUTH LANE COUNTY FIRE & RESCUE
 233 HARRISON AVE
 COTTAGE GROVE

SPONSORED BY LANE COUNTY,
 THE CITY OF COTTAGE GROVE &
 South Lane County Fire & Rescue



WHAT TO BRING:

Bring paint, household cleaners, lawn and garden chemicals, car care products, arts and crafts products, and just about any other household hazardous waste. The limit is 35 gallons of waste in total from each household. Check labels for words like flammable, corrosive, poison, caution, and danger. *For your safety it is always best to carry these items in a separate compartment (like the trunk of your car) with secured lids to eliminate spills in transport.*

DON'T BRING:

Empty containers, drums, radioactive waste, asbestos, explosives or electronics. For information about disposal of radioactive waste, asbestos and explosives, call Lane County Waste Management Division at 541-682-4120. Up to seven (7) Covered Electronic Devices, CEDs. Can be recycled for free at any one time at these 6 Lane County Transfer Stations; Glenwood, Cottage Grove, Florence, Oakridge, Veneta, and Vida during normal operating hours. Also, Lane County accepts sharps, oil, antifreeze and batteries of all types year-round at all refuse disposal sites. Call 541-682-4120 for more information.

What about hazardous waste from businesses?

Businesses which generate small amounts of hazardous waste may pre-register to bring that waste to this event. Businesses must pay for disposal of the waste, but most can save money by using this program, rather than hiring a contractor on their own. For more information about this program, call Lane County Waste Management Division at 541-682-4120.

Year Round Collection Sites—Paint, Electronics, and Fluorescent Lamps

Paint, Electronics, and Compact Fluorescent Bulbs (and tubes up to 4 feet) are accepted year-round at various locations in Lane County through on-going collection programs. Check out the websites below to find a location near you, or call 541-682-4120 for more information.

PaintCare
www.paintcare.org

Oregon E-Cycles
www.deq.state.or.us/lg/ecycle
 1-888-5-ECYCLE (532-9253)

CFL Collection Sites
List of Participating Lighting and Hardware Stores
www.lanecounty.org/lamps

CALL FOR A QUOTE

Zolezzi Insurance Agency

EST. 1968

Personal, Business, Life, & Public Entity Services

(541) 836-2177

YOU have options. Call for a QUOTE TODAY