

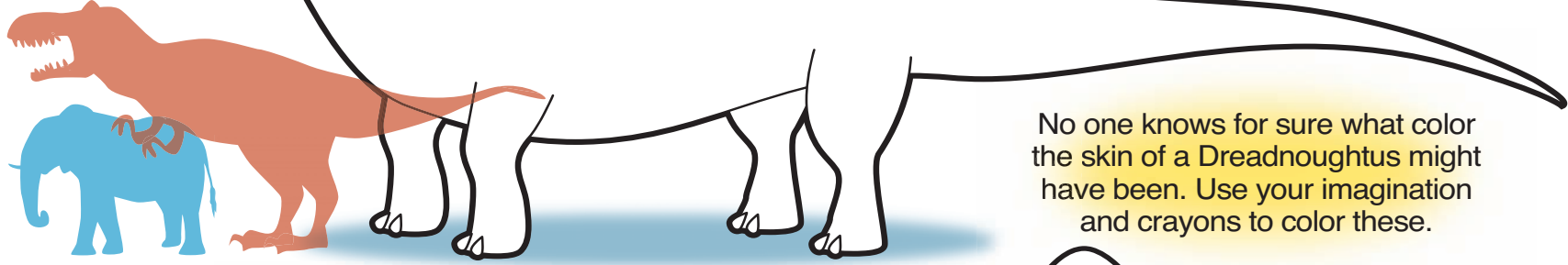
# Meet Dreadnoughtus

77 million years ago, a large, LARGE dinosaur wandered parts of planet earth. It has been named Dreadnoughtus.

Scientists think Dreadnoughtus was the largest beast ever to walk on planet earth.

Dreadnoughtus was discovered by Kenneth Lacovara, PhD, of Drexel University. Because of its huge size and evidence that the long tail was used as a weapon, it was named after the massive British dreadnought battleships.

*Dreadnoughtus would tower over an elephant and even a T-Rex!*



No one knows for sure what color the skin of a Dreadnoughtus might have been. Use your imagination and crayons to color these.

“With a body the size of a house, the weight of a herd of elephants, and a weaponized tail, Dreadnoughtus would have feared nothing,” Lacovara said. “That evokes to me a class of turn-of-the-last century battleships called the Dreadnoughts, which were huge, thickly clad and virtually impervious.”

## A Giant Among Dinosaurs

Replace the missing words.

**MOVE EAT STAND LEAVES SKULL**

Dreadnoughtus had a neck that was 37-feet long. They used their long neck to reach \_\_\_\_\_ in tree tops.

They could \_\_\_\_\_ in one place and reach a wide area of trees. It wasn't easy to \_\_\_\_\_ such a large body on land, so it would want to \_\_\_\_\_ as much as it could without moving. The long neck helped with that.

Their \_\_\_\_\_ did not weigh much, so they could lift their head!

## Big and Still Growing!

Can you unscramble the jumbled words?

The \_\_\_\_\_ of the Dreadnoughtus found in southern Argentina revealed that the \_\_\_\_\_ weighed as much as 12 \_\_\_\_\_.

This Dreadnoughtus was as long as two school \_\_\_\_\_!

Scientists believe that the discovered Dreadnoughtus was still \_\_\_\_\_ when it \_\_\_\_\_. We don't know how big it might have eventually become!

## Extra! Extra! Dinosaur Dot-to-Dot

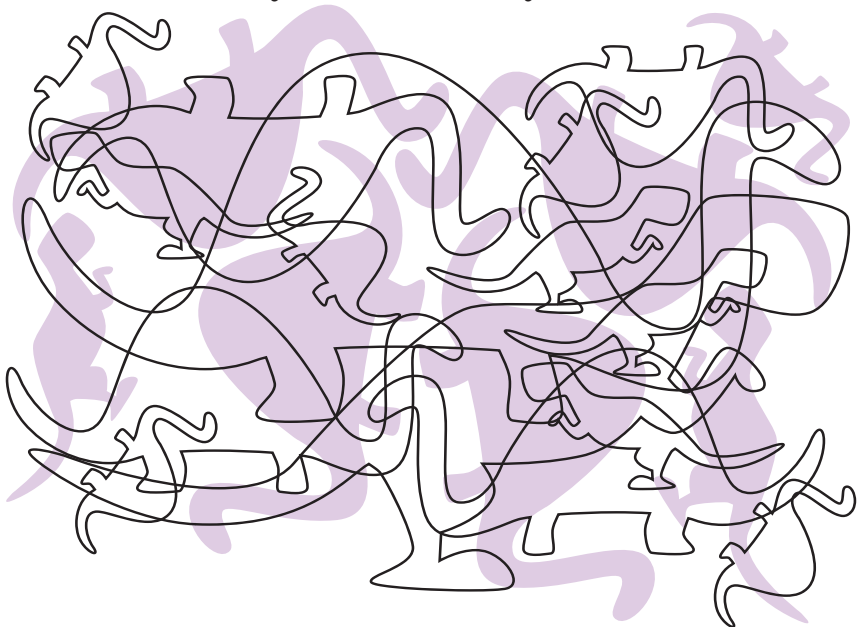
On one page of the newspaper, find and circle each of the letters that spell *dreadnoughtus*. Connect each circled letter in order to spell the word. Color in the shape you make!

Mark each statement about *Dreadnoughtus* TRUE or FALSE. Check your answers with the math problem below each statement. Sums that add up to even numbers are TRUE.

- Dreadnoughtus was a herbivore.  TRUE  FALSE  
5 + 3 + 2 =
- Dreadnoughtus weighed as much as 12 squirrels.  TRUE  FALSE  
3 + 3 + 1 =
- Dreadnoughtus lived in what is now southern Argentina.  TRUE  FALSE  
12 + 4 + 4 =
- The top of the Dreadnoughtus' shoulders was two stories high.  TRUE  FALSE  
4 + 4 + 4 =
- Dreadnoughtus had to eat nearly 24 hours a day to support such a large body.  TRUE  FALSE  
5 + 3 + 8 =
- The fossil remains were transported to Philadelphia and scanned with a laser scanner in order to study the bones and estimate size.  TRUE  FALSE  
2 + 3 + 5 =
- The original discovery revealed 115 bones.  TRUE  FALSE  
2 + 3 + 5 =
- The Dreadnoughtus' skull size is about the size of a pig.  TRUE  FALSE  
9 + 3 + 7 =
- One of its neck muscles is over a yard across.  TRUE  FALSE  
7 + 6 + 7 =
- Dreadnoughtus lived at the same time as the early humans.  TRUE  FALSE  
3 + 3 + 3 =
- The Dreadnoughtus fossil that was found is believed to have drowned in quicksand.  TRUE  FALSE  
2 + 10 + 4 =

## Kid Scoop Puzzler

How many dinosaurs can you find here?



## Double Double Word Search

Find the words in the puzzle. Then look for each word in this week's Kid Scoop stories and activities.

DISCOVERED
ELEPHANTS
SQUIRRELS
DINOSAUR
CENTURY
WEAPON
FEARED
BEAST
CHECK
HUGE
CLAD
WALK
HIGH
KNOW
BODY

Standards Link: Letter sequencing. Recognized identical words. Skim and scan reading. Recall spelling patterns.

## Kid Scoop VOCABULARY BUILDERS

This week's word: **IMPERVIOUS**

The adjective **impervious** means unmoved and not affected by outside influences.

My raincoat was **impervious** to rain.

Try to use the word **impervious** in a sentence today when talking with your friends and family members.

## FROM THE Kid Scoop LESSON LIBRARY

### Compound Words

Look through the newspaper for examples of five compound words (a word formed by combining two other words: table + spoon = tablespoon). Separate each word into the two words and make up the compound word.

Standards Link: Vocabulary: Identify compound words.



What kind of dinosaur likes to sleep all day?

ANSWER: A dino-snore!

## Write On! Gift for the World

Gift for the World

If you could give the whole world a gift, what would it be? Why this gift?

**shoppe** Keep it local. Find local businesses. [shoppelocal.biz](http://shoppelocal.biz)

Cottage Grove Sentinel + **shoppe** Keep it local. [www.shoppelocal.biz](http://www.shoppelocal.biz)