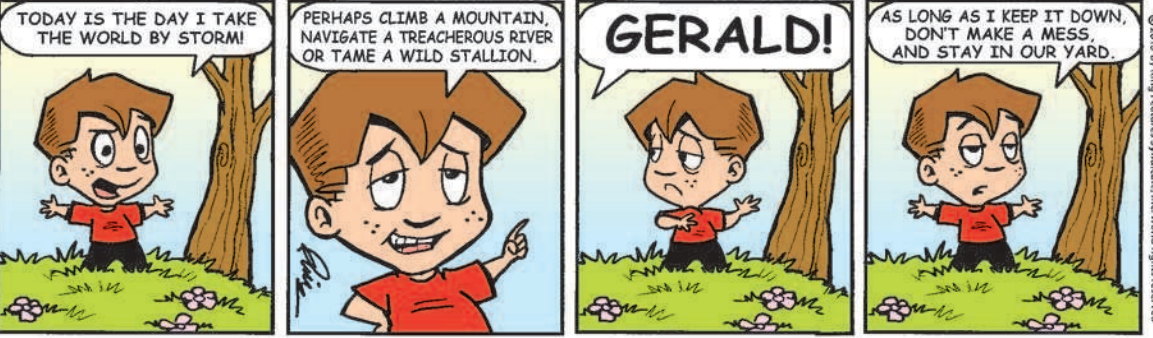


# Amber Waves

by Dave T. Phipps



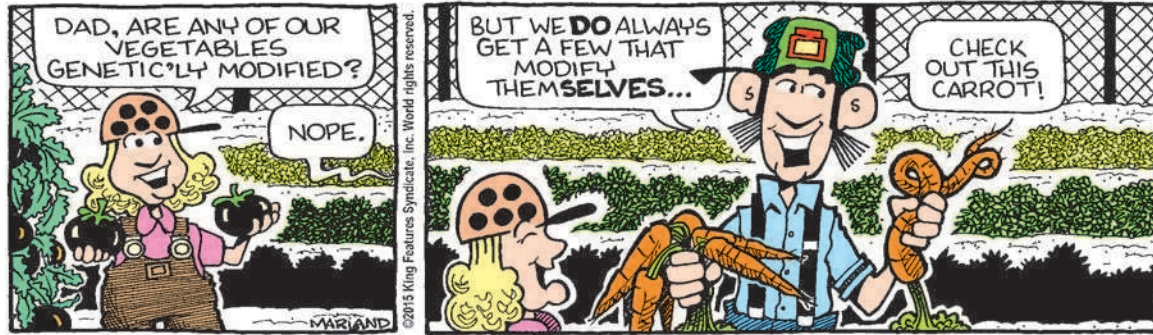
# Out on a Limb

by Gary Kopervas



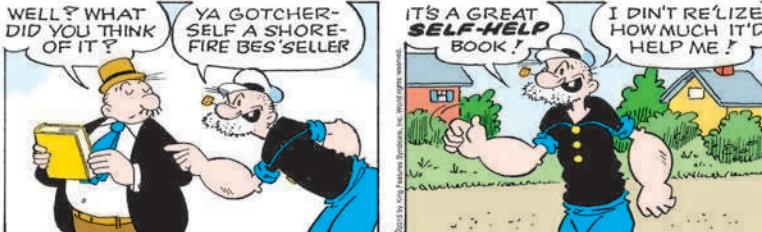
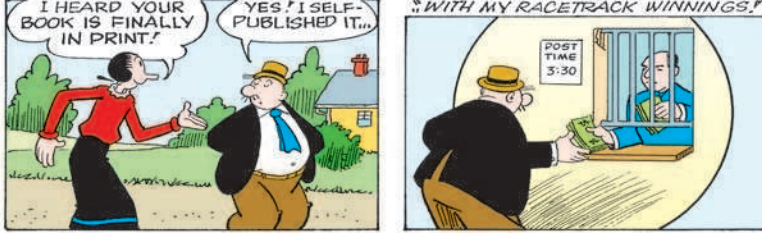
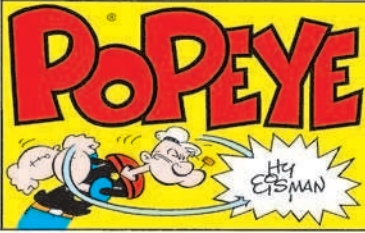
# R.F.D.

by Mike Marland



# The Spats

by Jeff Pickering



# Just Like Cats & Dogs

by Dave T. Phipps



# LAFF-A-DAY



### SCRAMBLERS

Unscramble the letters within each rectangle to form four ordinary words. Then rearrange the boxed letters to form the mystery word, which will complete the gag!

Uncaring: SLABE

Suspend: GLADEN

Maybe: SHARPE

Crucial: GRUNTE

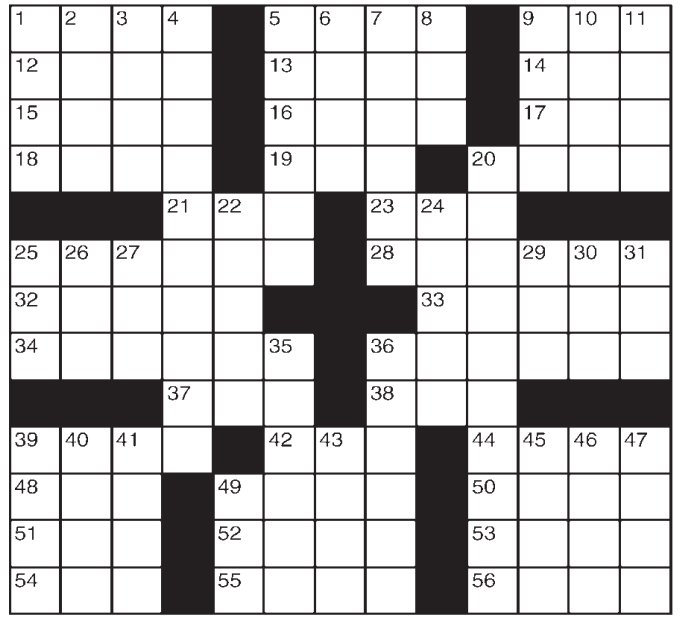
TODAY'S WORD: \_\_\_\_\_

Posting Date August 24, 2015

# King Crossword

### ACROSS

- 1 Oil cartel
- 5 "Clue" weapon
- 9 Long. crosser
- 12 Within reach
- 13 Acknowledge
- 14 Wall climber
- 15 - Major
- 16 Yarborough of NASCAR
- 17 "A mouse!"
- 18 Canal zone
- 19 Sort
- 20 Remedy
- 21 Thither
- 23 Spring mo.
- 25 Sailing ship
- 28 Titanic's resting place
- 32 Attu dweller
- 33 Blue hue
- 34 Flight from danger
- 36 "Annus Mirabilis" poet
- 37 Started
- 38 Blond shade
- 39 Arrest
- 42 Facial feature
- 44 Look lasciviously



- 48 Illustrations
- 49 Director
- 50 Authentic
- 51 Id counter-part
- 52 Exam format
- 53 Run-down part of town
- 54 Agt.
- 55 "Pretty Woman" star
- 56 Taro root
- 4 Hodgepodge
- 5 Wisconsin city
- 6 Elliptical
- 7 Welk favorites
- 8 Ram's partner
- 9 Place
- 10 Maintain
- 11 Youngster
- 20 Little Big Horn commander
- 22 Bizarre
- 24 Bartletts, e.g.
- 25 "Humbug!"
- 26 Hearty brew
- 27 Rule, for short
- 29 Future bloom
- 30 Before
- 31 Lair
- 35 Urge, formally
- 36 Lag
- 39 Boxer Max
- 40 Incite
- 41 Halt
- 43 Hebrew month
- 45 Neuter
- 46 Praise highly
- 47 Red Muppet
- 49 Trot

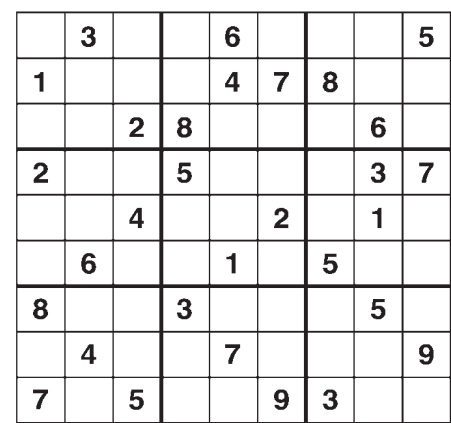
### DOWN

- 1 Responsibility
- 2 Lima's land
- 3 Relaxation

© 2015 King Features Synd., Inc.

# Weekly SUDOKU

by Linda Thistle



Place a number in the empty boxes in such a way that each row across, each column down and each small 9-box square contains all of the numbers from one to nine.

### DIFFICULTY THIS WEEK: ★★

- ★ Moderate
- ★★ Challenging
- ★★★ HOO BOY!

© 2015 King Features Synd., Inc.

# Trivia test

by Fifi Rodriguez

1. GEOGRAPHY: Guadalcanal is part of which island group in the Pacific Ocean?
2. TELEVISION: What was Norm's last name in the sitcom series "Cheers"?
3. MOVIES: Which actors voiced the two main characters, Woody and Buzz, in the "Toy Story" movies?
4. ARTS: What country holds a festival of music, literature and performing arts called an esteddfod?
5. INVENTIONS: Who is credited with inventing the Hula Hoop?
6. HISTORY: Who was known as "The Iron Chancellor"?
7. ANIMAL KINGDOM: What kind of creature does the Australian bandicoot most resemble?
8. RADIO: When did the soap opera "The Guiding Light" begin as a serial show on radio?
9. MEASUREMENTS: The term "vicennial" refers to a period of how many years?
10. GENERAL KNOWLEDGE: What is the symbol for the zodiac sign Capricorn?

© 2015 King Features Synd., Inc.

# HOCUS-FOCUS

BY HENRY BOLTINOFF

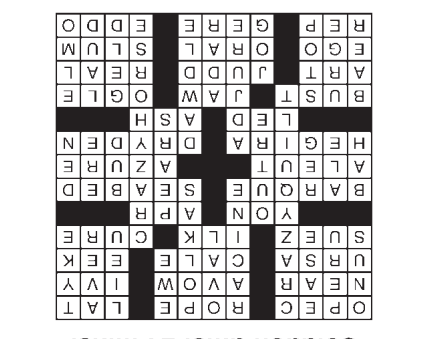


Find at least six differences in details between panels.



Find Puzzles Galore! • Order at: rbmamall.com or Call: (800) 708-7311 x250

- Trivia Test Answers
1. Solomon Islands
  2. Peterson
  3. Tom Hanks and Tim Allen
  4. Wales
  5. Richard Kner and Arthur "Spud" Melin
  6. Otto von Bismarck, Germany
  7. A large rat
  8. 1937
  9. 20 years
  10. The goat



Solution time: 24 mins.

# CryptoQuip

This is a simple substitution cipher in which each letter used stands for another. If you think that X equals O, it will equal O throughout the puzzle. Solution is accomplished by trial and error.

Clue: A equals Y

- HLEEUHI AUL WU HUDI DBNM
- BCW ESUYIHW NU QBCJLTHM BC
- ICIDA. MBQI AUL WTQTWIW BCW
- YUCJLISIW?

© 2015 King Features Synd., Inc.

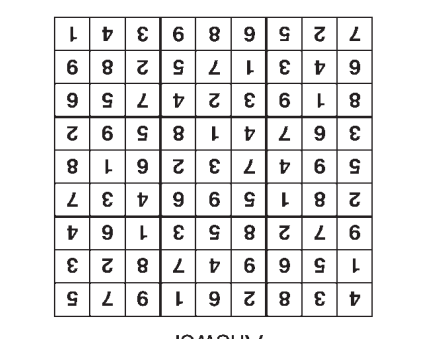
### SCRAMBLERS

Today's Word

HUSBAND

1. Blase; 2. Dangle; 3. Perhaps; 4. Urgent

# King Crossword



# Weekly SUDOKU

### CryptoQuip

Suppose you do some math and proceed to vanish an enemy. Have you divided and conquered?

Answer: DIVIDE

Keep it local.

Find local businesses.

shoppelocal.biz

Keep it local.

www.shoppelocal.biz