

Xmas Presents Worth While



at
**RILEY
AND
RILEY'S**
Beautiful Decorated
Gold, Glass and Delft

Dishes. See the Handsome China Cabinet
Lots of Granite Ware



—BIG LINE OF—
Men's Gloves
Men's Mittens
Neckties
Christmas Post Cards
Candies and Bon Bons
by the Box and Pound
Fruits of Every Kind
Nuts
Cranberries
Celery
Canned Goods
Bottled Goods
*All Kinds of
Baked Goods
for Christmas*

WE CARRY A
COMPLETE LINE
OF



Architect Thornton Very Badly Hurt

Falls 20 Feet From Scaffold at Litch
Building Aligning On His
Head.

C. R. Thornton, the architect who designed the Wallowa County courthouse, fell from a scaffold at the W. J. Funk corner Monday afternoon about 2 o'clock, and was very seriously and perhaps fatally hurt. He was still unconscious Wednesday, but his heart action is stronger and more hope is entertained for his recovery.

Mr. Thornton was putting on the iron sheathing at the bottom of the second story windows on the Sam Litch building, just a few feet west of the W. J. Funk & Co. corner entrance. The scaffold on which he stood is about 20 feet high. It is supposed he stepped back, forgetting the platform is only two planks wide and tumbled over backward. He landed on the right side of his head and face, breaking his nose, bruising his cheek, but the chief wound being a contusion on his forehead. So far as known there are no fractures. He was carried unconscious into Jackson & Weaver's drug store and attended by Dr. Hockett. Later he was removed to his home, the Sam Dorrance house corner East First and North streets, where everything possible is being done to save his life.

Mr. Thornton's home is in La Grande but for several months he and his wife have resided here while he worked on the courthouse and the Litch building.

NOTICE TO STOCKHOLDERS.

Notice is hereby given that the annual meeting of the stockholders of the Wallowa National Bank, of Enterprise, Oregon, will be held at the office of their banking house in Enterprise, Oregon, on Tuesday, the 11th day of January, 1910, between the hours of 10 a. m. and 4 p. m., for the election of directors for the ensuing year, and for the transaction of such other business as may legally come before said meeting.

Dated at Enterprise, Oregon, December 8th, 1909. 65a6

W. R. HOLMES, Cashier.

Notice to Modern Woodmen.

Eagle Camp, No. 10497, will hold its annual election of officers in Fraternal hall, Thursday night, December 16, at 7:30 p. m. All members are requested to be present.

J. W. RODGERS, Consul.
THOS. M. LILL, Clerk.

XMAS RUSH AT P. O.

The Christmas rush at the post-office is in full swing and it keeps Postmaster Weathers and two clerks, Mrs. Weathers and Miss Wagner, busy distributing postcards and selling money orders.

OS-TE-O-P-A-T-H-Y.

A Thought.

"When in the future an estimative intelligence sums up the great discoveries of the nineteenth century, I believe that the science of Osteopathy will be appointed a place near the head of the list."—Ople Reid.

New Suits Filed.

Dec. 13—S. C. Himmelwright vs. A. W. and Sarah V. Hodgins.

Our line of Christmas Candy in Christmas Boxes is complete. Jackson & Weaver. 65a6

Dance Christmas eve at Enterprise Opera House. 65b1

Fred Savage, bookkeeper at W. J. Funk & Co's, is walking like a spring-halved horse, the result of a painful wound in the bottom of one foot, caused by a nail that he stepped on and didn't know it was loaded.

See the fine line of Dolls at the New Drug Store. Everything new. Nothing carried over from former years. Look there, Jackson & Weaver, proprietors. 65a6

Mrs. Myrtle Huffman of Elgin came Tuesday evening for a week's visit with her relatives, the family of M. Larson.

Mr. and Mrs. B. B. Boyd left Tuesday morning for Ledford, Iowa, to spend Christmas with his parents, Mr. and Mrs. J. S. Boyd. They will be gone about a month. Mr. Boyd expects to make a trip down to Oklahoma while East.

Vest Brothers Orchestra will play for the dance at the opera house on Christmas Eve. Supper served at Hotel Enterprise. 65b1

Paul Wilson was in town Saturday visiting his parents. He reports the sale of 1020 sacks, 2234 bushels of wheat, to C. R. Bradley for 88 cents a bushel, the top price so far paid in this valley.

Christmas tree ornaments, candles, bells, candle holders, etc., at Jackson & Weaver's. 65a6

WANTED.

Some one to saw wood. I will furnish the machine. A snap for right party. O. J. Ros, Alder Slope, Enterprise, Oregon. 65f1

WE WANT

To list good, smooth Wheat Land
—improved or unimproved—as we
have the buyer for it.

Enterprise Real Estate Company
Office over Harness Shop, Enterprise, Ore.

Every Year Old Santa Claus
Leaves His Best Gifts at

HOMAN'S



See the Wonderful
Picture and
Animal blocks

The Appropriate
Books for
Children

Games, Toys, Masks,
Dolls and Doll Heads,
Child's Dishes
Girls' Sewing Sets
Trumpets, Toy Guns

Smokers' Sets, Candies, Nuts, Fruit

Christmas Tree

Ornaments
Largest Stock in
Town
Never Forget the
Fresh Baked
Peanuts



at
Prentiss Homan's

Bishop Robert Paddock of the Episcopal church preached two fine sermons to large congregations in the M. E. church here, Sunday and Monday nights. He went to Joseph Tuesday afternoon to hold services there.

W. M. Sutton, formerly principal of the local schools, has been elected mayor of Springfield.

Fred Wagner of the Enterprise Real Estate company returned home Saturday from a business trip to the Walla Walla country.

THE NEWS RECORD

(Twice-a-Week.)

AN INDEPENDENT NEWSPAPER

Formerly the Wallowa News, established March 3, 1899.

Published Wednesdays and Saturdays at Enterprise, Oregon, by THE ENTERPRISE PRESS
Office East side Court House Square

Entered as second-class matter January 2, 1909, at the postoffice at Enterprise, Oregon, under the Act of March 3, 1879.

Subscription Rates: One year \$2, six months \$1, three months 50c, one month 20c. On yearly cash-in-advance subscriptions a discount of 25c is given.

WEDNESDAY, DECEMBER 15, 1909

Lunch and meals served all hours at Mrs. M. L. Larsen's. Lunches 10 and 15 cents; meals 25 cents. Board by the week also. 66

Emerald Rebekah lodge, No. 119, elected the following officers Saturday night: Iona Woodell, N. G.; Maggie Oakes, V. G.; V. I. Cronin, Rec. Secy.; Mrs. S. L. Burnaugh, Fin. Secy.; Alice Gally, Treas.

Call at the New Drug Store when in Enterprise, and look over our brand new store and new stock. Everything first-class from top to bottom. Jackson & Weaver, proprietors. The Litch bldg. 65a6

Miss Ella Daley, the very efficient stenographer and deputy in County Clerk Boatman's office, left Monday for Yale, S. D., for a long visit with home folks. She went by way of Spokane to Alberta, Canada, where she will visit a cousin, and then go on home via the C. P. Ry.

Miss Nina Mack of Los Angeles, Cal., is a guest of her relatives, Mr. and Mrs. W. T. Bell and Mr. and Mrs. W. C. Boatman. Miss Mack is a daughter of George Mack, a former Joseph banker. She has returned to this county to spend the winter at least as she finds this climate better for her health. She will reside at Joseph.

Reverend Adams will begin a series of bible lectures in the Christian church Wednesday night. Mr. Adams is the evangelist who has been holding a revival at Wallowa. He will occupy the pulpit in the Christian church next Sunday morning and evening.

W. H. Dryden and J. R. Uien came in Monday to ship out the big steam ditcher belonging to the American Light & Water Co. It has been standing on River street near the flume since the completion of the water works last summer. It will be shipped to Tucuman, N. M., where the company has a contract. The La Grande water works system is complete and the citizens are now drinking Beaver Creek water.

XMAS FURNITURE



At Bargain Prices
For Cash In
Hand

In order to Raise
Money to Meet
Maturity Obligations I will sell
My Great Stock of
Furniture, Etc. at
Cut Prices for
Cash. Great Opportunity for
Christmas Shoppers at this

PRE-INVENTORY SALE

Mission, Golden Oak and Reed Rockers, Make Fine Gifts. See the Genuine Brass Bed at G. I. RATCLIFF'S, The House Furnisher

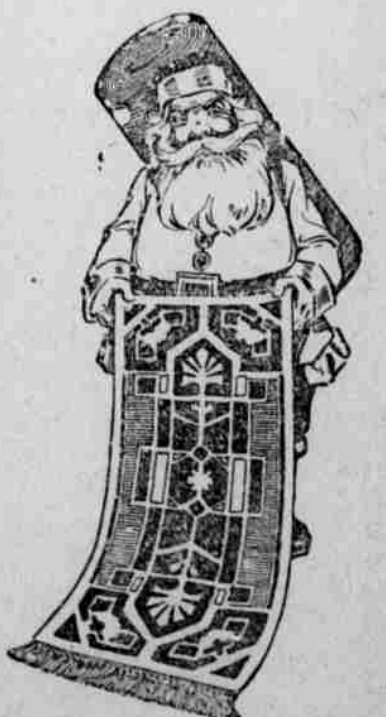
Exclusive Agent for
GENUINE EDISON PHONOGRAPHS

The best of all Talking
Machines. I am selling
more Phonographs
than any other dealer
in the county. There's
a reason

**THE LIGHT-RUNNING NEW
HOME SEWING
MACHINES**

**MERMAID WATER MOTOR
WASHING MACHINES**

Art Squares, Rugs
and Carpets share
in the Cash Cut-
Price Sale, as does
everything in my
immense stock, except
Phonographs that
must be sold at
Contract Price



G. I. RATCLIFF, Enterprise