

Wallowa County Chieftain

County Pioneer Paper

Established in 1884. Published every Thursday by The Enterprise Press. Office East side Court House Square.

Entered in the postoffice at Enterprise, Ore., as second-class matter.

SUBSCRIPTION RATES.
One year \$1.50 Three months 50c.
Invariably in Advance.

THURSDAY, JUNE 3, 1909.

Of Interest to Farmers and Mechanics.

Farmers and mechanics frequently meet with slight accidents and injuries which cause them much annoyance and loss of time. A cut or bruise may be cured in about one-third the time usually required by applying Chamberlain's Liniment as soon as the injury is received. This liniment is also valuable for sprains, soreness of the muscles and rheumatic pains. There is no danger of blood poisoning resulting from an injury when Chamberlain's Liniment is applied before the parts become inflamed and swollen. For sale by Burnaugh & Mayfield.

SUGAR BEETS LOOK FINE.

Supt. F. S. Bramwell and two field foremen of the La Grande sugar factory, were here over Wednesday night to see how the experiment, 160 acres near here planted to beets were coming on. Mr. Bramwell is greatly pleased with the stand and growth. He says they are looking fine. The Japs are now engaged in thinning the beets.

If You are Worth \$50,000 Don't Read This.

This will not interest you if you are worth fifty thousand dollars, but if you are a man of moderate means and cannot afford to employ a physician when you have an attack of diarrhoea, you will be pleased to know that one or two doses of Chamberlain's Colic, Cholera and Diarrhoea Remedy will cure it. This remedy has been in use for many years and is thoroughly reliable. Price 25 cents. For sale by Burnaugh & Mayfield.

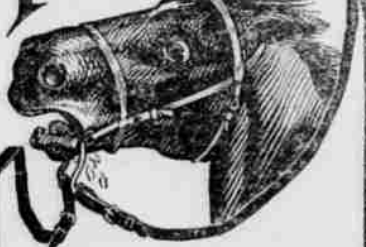
STREETER-BRYAN COMING.

Morris E. Streeter has written the Enterprise opera house management that the Streeter-Brayn company will positively return to this valley for the summer, reaching here not later than July 1. Mr. Streeter says they are coming "home" and will renew their old camp just above Enterprise.

Chamberlain's Cough Remedy the Best on the Market.

"I have used Chamberlain's Cough Remedy and find it to be the best on the market," says E. W. Tardy, editor of The Sentinel, Gainsboro, Tenn. "Our baby had several colds the past winter and Chamberlain's Cough Remedy always gave it relief at once and cured it in a short time. I always recommend it when opportunity presents itself." For sale by Burnaugh & Mayfield.

PHL



RECORD

Pacific Horse Liniment is prepared expressly for the needs of horsemen and ranchmen. It is a powerful and penetrating liniment, a remedy for emergencies. A soothing embrocation for the relief of pain, and the best liniment for sprains and soreness. Unequaled for curing the wounds and injuries of BARBED WIRE and for healing cuts, abrasions, sores and bruises. Pacific Horse Liniment is fully guaranteed. No other is so good or helpful in so many ways. If it fails to satisfy, we authorize all dealers to refund the purchase price.

EXTRA LARGE BOTTLES FIFTY CENTS
HOYT CHEMICAL CO., PORTLAND, ORE.
BOOKLET FREE

FOR SALE BY
BURNAUGH & MAYFIELD

ESTRAY NOTICE.

I the undersigned have this day taken up: Seven Calves, three heifers and four bulls, all branded H H on left hip. One Jersey bull calf, the others red and white, black and white. Came to my place on Alder Slope.

O. J. Roe, Mountain View Fruit Farm, Enterprise, Oregon, May 1, 1909. 38c4

Women Who Are Envid.

Those attractive women who are lovely in face, form and temper are the envy of many, who might be like them. A weak, sickly woman will be nervous and irritable. Constipation or kidney poisons show in pimples, blotches, skin eruptions and a wretched complexion. For all such, Electric Bitters work wonders. They regulate Stomach Liver and Kidneys, purify the blood; give strong nerves, bright eyes, pure breath, smooth, velvety skin, lovely complexion. Many charming women owe their health and beauty to them. 50 cents at Burnaugh & Mayfield's.

NOTICE FOR PUBLICATION.

Department of the Interior, United States Land Office at La Grande, Oregon, May 3, 1909.

Notice is hereby given that John F. McCoy, of Imnaha, Oregon, who, on May 8, 1902, made Homestead Entry No. 11360-Serial No. 03639, for Lot 1, SE 1/4 NW 1/4, and S 1/2 NE 1/4, Section 10, Township 2 North, Range 18 East, Willamette Meridian, has filed notice of intention to make Final five year Proof, to establish claim to the land above described, before D. W. Sheahan, U. S. Commissioner, at Enshelban, U. S. Commissioner, at Enshelban, Oregon, on the 21st day of June, 1909.

Claimant name; as witnesses: Gilbert H. Vest of Enterprise, Oregon; Jonathan Haas, of Enterprise, Oregon; Luther Stumbaugh of Imnaha, Oregon; Jasper N. Stubblefield, of Imnaha, Oregon. F. C. Bramwell, Register. 37c5

Stomach Troubles.

Many remarkable cures of stomach troubles have been effected by Chamberlain's Stomach and Liver Tablets. One man who had spent over two thousand dollars for medicine and treatment was cured by a few boxes of these tablets. Price, 25 cents. Samples free at Burnaugh & Mayfield's drug store.

GAME LAWS.

Any person knowing of any violation of the game or fish laws of the state, or of persons not properly keeping screens over irrigator ditches, are requested to notify

JOE CLEMONS, Deputy State Game and Forestry Warden, Zumwalt, Oregon. 42c

A Thrilling Rescue.

How Bert R. Lean, of Cheny, Wash was saved from a frightful death is a story to thrill the world. "A hard cold," he writes, "brought on a desperate lung trouble that baffled an expert doctor here. Then I paid \$10 to \$15 a visit to a lung specialist in Spokane, who did not help me. Then I went to California, but without benefit. At last I used Dr. King's New Discovery, which completely cured me and now I am as well as ever." For Lung Trouble, Bronchitis, Coughs and Colds, Asthma, Croup and Whooping Cough its supreme. 50 cents and \$1.00. Trial bottle free. Guaranteed by Burnaugh & Mayfield.

ENTERPRISE OPERA HOUSE



Watch for Next Announcement

Home Course In Modern Agriculture

XII.—The Selection and Care of Farm Machinery

By C. V. GREGORY,

Agricultural Division, Iowa State College

Copyright, 1906, by American Press Association

THE methods of farming followed today are made possible only by the use of modern labor saving machinery. The farm hand of today needs brains more than muscles. The ability to handle a complicated machine successfully is more valuable than the power to do a hard day's manual labor.

With the coming of improved machinery the problem of what to buy and what to get along without has become a serious one. The farmer has more money tied up in machinery than in any one thing besides his land. Having too much machinery is nearly as bad as having too little. What is excess is a waste of money.

It is always well to do a little figuring before buying a new machine. Dividing the cost of the implement by the number of years it may be reasonably expected to last will give the amount that must be charged to depreciation each year. Add to this an allowance for repairs, storage and each year's share of the interest, and you will have the yearly cost of the machine. A little further figuring will show whether the benefit received from it in a year will warrant this cost.

Machinery may be roughly divided into five classes—tillage, planting, haying, harvesting and miscellaneous. Of the many tillage implements there are some that are absolutely necessary on any farm. Among these are the plows. For the farmer on a quarter section a sixteen inch riding plow will be all that is needed for the field work. In addition it may be well to have a cheap walking plow for plowing the garden, turning out potatoes and for use in case of an emergency. A gang plow requires too many horses to be practicable on the average 100 acre farm. On larger farms, where plenty of horses are available, a gang plow will save the time of an extra man. It is a good plan to have the plow supplied with two or three moldboards of different slants. A steep moldboard pulverizes the soil more and for this reason is a good thing to use on stubble land. On clover sod, however, a longer moldboard should be used in order to lessen the draft.

One of the most important tillage implements is the disk. No other machine will pulverize the soil so quickly or thoroughly. The use of a tongue truck—a small two wheeled arrangement—under the rear end of the tongue is of considerable advantage in taking the weight off the horses' necks. Solid wheel disks pulverize the ground more thoroughly than spaders or cutaways. A good harrow is a necessity on any farm. The flexible type is best for all conditions, as it gets down into the hollows and rides over trash better than will a solid frame harrow. Spring tooth harrows, rollers and weeders all have their special uses, but can hardly be said to be necessary on the average quarter section.

Next in order come the cultivators, and there are so many styles of these that choosing is a difficult matter. The most important part of the cultivator is the shovels. A happy medium is struck in the six shovel type. The shovels on this can be run deep

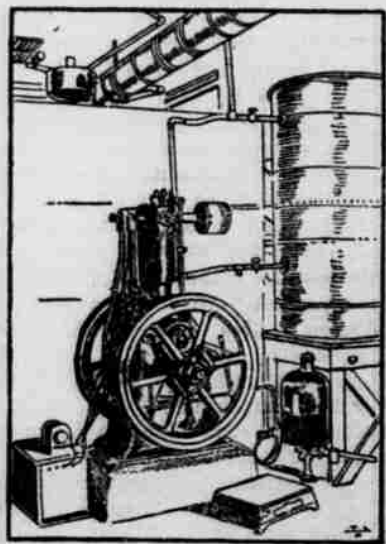


FIG. XXIII—A HANDY TYPE OF GASOLINE ENGINE.

enough to loosen the soil well the first two times over the field and can later be set shallow enough to avoid serious injury to the spreading roots. If you are in the corn business extensively enough to afford two sets of cultivators it is well to have special surface machines for the last two cultivations. Some companies make surface blades which can be attached in place of the shovels when so desired. In the hands of a careful man the two row cultivator does good and rapid work.

First in the line of planting machines come the seeders. While costing a little more at first, there is no better implement for sowing small grain than the disk drill. The disks cut through cornstalks and other trash, and the seed is deposited evenly and at a uniform depth. The resulting evenness of stand will cause an increased crop sufficient to pay the entire cost of the drill in a year or two.

In selecting a corn planter the run-

ner type of furrow opener is preferable to the disk, since the latter is hard to guide. The essential point in planters, however, is the drop. If you are in the habit of grading your seed corn carefully so that the kernels are all about the same size the edge drop plates will give a more even stand than will the round hole drop. Planters in which the plates are turned by a chain from the axle and the wire used only to open the shoe are surer to drop every time than those in which all the work is done by the wire.

There are two haying implements that are absolutely essential, the mower and the rake. Be sure to pick a wide cut mower. Six feet is a good width. The extra draft amounts to little, and considerable time will be saved in going over the field.

Where much hay is made the old way of raking in bunches and pitching it on to the wagon by hand is too slow and laborious. A much better plan is to rake the hay into windrows with a side delivery rake and gather it up with a hay loader. Where the hay is put in the barn a set of double harpoon forks will make short work of the unloading. If it is to be stacked some form of stacker will save a great deal of hard work.

The most important harvesting machine is the self binder. The binder is

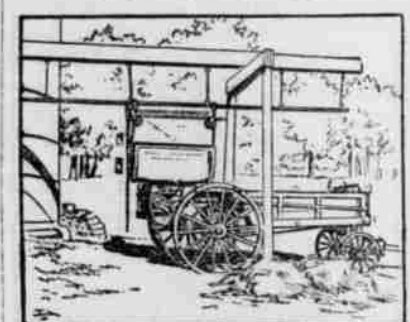


FIG. XXIV—LOADING THE MANURE SPREADER DIRECT FROM THE BARN WITH A LITTER CARRIER.

the most complicated machine on the farm and the one most likely to get out of order. In buying a binder simplicity of construction, ease of adjustment and handiness of oiling are important points to look after. A tongue truck is an attachment that should go with every binder. This is the only means of eliminating side draft that has yet been discovered. A tongue truck is rather expensive, but so are sore shoulders and necks on the horses at harvest time.

Where much stock is kept the corn binder is a necessary implement. By cutting a large share of the corn and using it as fodder or silage much feed is saved that would otherwise be wasted. About 40 per cent of the entire feeding value of the corn plant is in the stalk. When these are left standing in the field the greater part of this feed is wasted. The shocked fodder may profitably be run through a shredder before feeding. This will husk the corn and leave the stalks in the best shape to be fed or used for bedding.

One of the most important of the miscellaneous implements is the windmill. No farmer can afford to pump water for his stock by hand when the wind will do it for nothing after the mill has once been put up. In erecting a windmill be sure that it is put on a high enough tower so that surrounding trees or buildings will not cut off the wind. A mill which is geared back so that the wheel makes three revolutions or so to one stroke of the pump will run in a lighter wind than will the straight geared type. A three legged tower is just as strong as a four and considerably cheaper.

A machine that is almost indispensable on a stock farm is the gasoline engine. The original cost of these engines is reasonable, and the amount required for fuel and repairs is small. With a gasoline engine to furnish the power to run a sheller and grinder feed can be cheaply and easily prepared for the stock. The engine will also saw wood, if you are fortunate enough to have any to saw, run the silage cutter, grindstone, separator, churn and washing machine. It may also replace the windmill as a source of power for pumping.

In selecting a gasoline engine be sure to get one large enough to do the required work easily, remembering at the same time that where much light work is to be done a small engine will do it with much less gasoline than will be used by a large one. This objection to a large engine can be overcome to a large extent by so arranging the work that several light machines may be run at the same time. The most reliable type of engine is the four cycle. In which there are two revolutions of the flywheel to one explosion. The water system of cooling is the most efficient, though air cooled engines are all right for light work.

Another necessary machine of the stock farm is the manure spreader. Not only does this save a great deal of work, but it also applies the manure more evenly and will cover a greater amount of ground with a given quantity of manure. There should be little wood in a manure spreader, since it rots out quickly.

Colds that hang on weaken the constitution and develop into consumption. Foley's Honey and Tar cures persistent coughs that refuse to yield to other treatment. Do not experiment with untried remedies as delay may result in your cold settling on your lungs. Burnaugh & Mayfield.

HIDES AND PELTS WANTED.

Bring your hides and pelts to Enterprise and receive big price for them. Joe Allen & Co. Warehouse west of Boswell's barn. ctf

NOTICE FOR PUBLICATION—ISOLATED TRACT.

Public Land Sale, Department of the Interior, U. S. Land Office at La Grande, Oregon, May 19th, 1909.

Notice is hereby given that as directed by the Commissioner of the General Land Office, under provisions of Act of Congress approved June 27, 1906 (34 Stats., 517), we will offer at public sale, to the highest bidder, at 10 o'clock a.m., on the 8th day of July, 1909, at this office, the following-described land: S 1/2 NW 1/4 Section 1, and Lot 1 and SE 1/4 NE 1/4 Section 2, T. 13S., R. 44 E., W. M., Serial No. 02334.

Any persons claiming adversely the above-described land are advised to file their claims, or objections, on or before the time designated for sale. F. C. Bramwell, Register, 1905 Colon R, Eberhard, Receiver.

LODGE DIRECTORY

I. O. OF. ENTERPRISE LODGE, No. 153.
EMERALD REBEKAH LODGE, No. 119
K. of P. ENTERPRISE LODGE, No. 94.
JUANITA TEMPLE, No. 7, Pythias Sisters.

MASONIC ENTERPRISE CHAPTER, No. 30, Royal Arch Masons, meets first and third Tuesdays of each month in Masonic Hall. All visiting Royal Arch Masons welcomed.
J. B. OLMSTEAD, High Priest.
D. W. SHEAHAN, Secretary.

WALLOWA LODGE, No. 82, A. F. & A. M., meets second and fourth Saturdays of each month in Masonic Hall. Visiting Stars are always welcomed.
J. A. BURLINGH, W. M.
W. C. BOATMAN, Secretary.

WALLOWA VALLEY CHAPTER, No. 50, O. E. S., meets first and third Saturdays of each month, in Masonic Hall. Visiting Stars are always welcomed.
MRS. ELVA L. FRENCH, W. M.
MRS. MARY E. STEEL, Sec.

M. W. A. EAGLE CAMP, No. 10497, M. W. A. Meets first and third Thursdays in each month, in new Fraternal hall. Visiting Neighbors always welcome.
J. W. RODGERS, Consul.
T. M. DILL, Clerk.

ANEROID CAMP, No. 3642, R. N. of A.

W. O. W. ENTERPRISE CAMP, No. 535, W. of W.
ALMOTA CIRCLE, No. 278, W. of W.

S. K. Clark

Plumber & Steam Fitter

Full line of plumbing material.

Satisfaction Guaranteed

Shop at Keltner's Hardware Store. Leave Orders.

WESLEY DUNCAN,

Stock Inspector for Wallowa County.

JOSEPH, OREGON

L. Berland,

Dealer in

Harness, Saddles, Chaps, Spurs, and Leather Goods of all descriptions.

I will fit you out with the best goods for the least money. When in need of anything in my line, call and inspect my stock before purchasing.

ENTERPRISE, - - - OREGON

Did It Ever Occur To You That A

Telephone in Your Home

Provides safety, convenience, economy and pleasure, and makes your home life complete? Its cost is little, its benefits are manifold.

Home Independent Telephone Co.

Covering Union and Wallowa Counties

Summer Rates East

During the Season 1909

via the

Oregon Railroad & Navigation Co.

OREGON SHORT LINE AND UNION PACIFIC RAILROAD

from

Portland, Seattle, Spokane, Tacoma, Walla Walla and all points on The O. R. & N. line

To OMAHA and Return - - \$60.00

To KANSAS City and Return - \$60.00

To ST. LOUIS and Return - \$67.50

To CHICAGO and Return - \$72.50

and to other principal cities in the East, Middle West and South. Correspondingly low fares.

On Sale June 2, 3; July 2, 3; August 11, 12

To DENVER and Return - - \$55.00

On Sale May 17, July 1, August 11

Going transit limit 10 days from date of sale, final return limit October 31st.

These tickets present some very attractive features in the way of stopover privileges, and choice of routes; thereby enabling passengers to make side trips to many interesting points enroute.

Routing on the return trip through California may be had at a slight advance over the rates quoted.

Full particulars, sleeping car reservations and tickets will be furnished by any O. R. & N. local agent, or

WM. McMURRAY, General Passenger Agent, Portland, Oregon.
J. G. HARMAN, Agent, Enterprise, Oregon.

"Careful Banking Insures the Safety of Deposits."

Depositors Have That Guarantee at

WALLOWA NATIONAL BANK

OF ENTERPRISE, OREGON

CAPITAL \$50,000
SURPLUS \$50,000

We Do a General Banking Business.
Exchange Bought and Sold on
All Principal Cities.

Geo. W. Hyatt, President W. R. Holmes, Cashier
Geo. S. Craig, Vice President Frank A. Reavis, Asst. Cashier

DIRECTORS

Geo. S. CRAIG GEO. W. HYATT MATTIE A. HOLMES
J. H. DOBBIN W. R. HOLMES