

Ladies Get Busy

200 new and up-to-date Linen Jackets Suits in all shades ranging in price from \$7.50 to \$20. 500 house, street and party dresses from \$1.50 to \$30. The most beautiful garments this store has ever shown.

F. E. Livengood & Co.,
Pendleton, Ore. Teutsch's Old Stand



60 YEARS' EXPERIENCE
PATENTS
TRADE MARKS
DESIGNS
COPYRIGHTS &c.
Anyone sending a sketch and description may quickly ascertain our opinion free whether an invention is probably patentable. Communications strictly confidential. **MUNN & Co.** on Patents sent free. (Best agency for securing patents. Patents taken through Munn & Co. receive special notice, without charge, in the **Scientific American.** A handsomely illustrated weekly. Largest circulation of any scientific journal. Terms, \$3 a year; four months, \$1. Sold by all newsdealers. **MUNN & Co.** 361 Broadway, New York
Branch Office, 625 F St., Washington, D. C.

E. W. GATES,
Contractor and Builder
Estimates Furnished Jobbing and Repairing
At the Hotel Echo Echo, Oregon
PULL TOGETHER FOR ECHO



SCENE ON THE COURT OF HONOR, A.-Y.-P. EXPOSITION, SEATTLE.

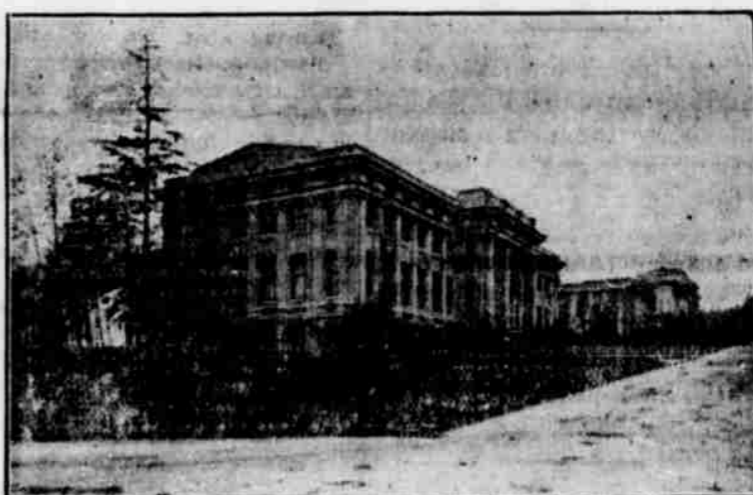
In constructing its group of five buildings, the United States Government had regard for the type of architecture followed generally in the buildings of the Exposition proper. The Exposition structures are in the modern French renaissance and the Government in the modern Spanish. The two styles tie in nicely together and make an harmonious whole. On the right of the picture is the Alaska building, one of the Government group. In the center is the European Exhibits Palace. On the left is a facade of the Palace of Agriculture. The last two named are in the French renaissance and were completed before December 1, 1908. The Alaska building was completed April 15.



PANSIES AND POSIES EVERYWHERE AT A.-Y.-P. EXPOSITION.

In the foreground of the picture is shown the bank which slopes up from Geyser Basin at the Alaska-Yukon-Pacific Exposition, Seattle. Upon it have been planted 300,000 tufted pansy plants, and close up to the balustrades high-growing plants of bright blossom.

Above Geyser Basin can be seen the banks of the Cascades, and around these are growing 100,000 rose bushes, so selected that there will be a rotation of blooms throughout the Exposition.



THE FINE ARTS PALACE, A.-Y.-P. EXPOSITION, SEATTLE.

Into the Palace of Fine Arts there has gone as fine a collection of works of art as has ever been shown at a world's fair. It is made up of loan collections from Great Britain, France, Italy, Germany and the Eastern states of America. Also there are valuable specimens of work by the leading modern artists of Japan and China, and many of the more notable works of their ancient artists.

So valuable is the collection that insurance in the sum of \$1,225,000 has been placed upon it with Lloyds.

The building is absolutely fireproof. It is of reinforced concrete and brick and, at the end of the Exposition, it will revert to the University of Washington, by which it will be used as a School of Chemistry.



ORIENTAL PALACE AND MANUFACTURERS BUILDING.

The Palace of Oriental Exhibits and Manufacturers Building have a frontage on Cascade Court and Geyser Basin and look across at Foreign Exhibits and Agricultural Palaces; Yukon Avenue separates these magnificent display buildings, and in the back ground the state buildings of Oregon and California are located.

Construction work on these buildings was completed last year and exhibits are being received and placed in position. The Oriental Palace will house the most valuable collection of Far Eastern art that has ever been sent from the Orient, and will present displays from Japan, China, India, Ceylon, Straits Settlements, French Indo China, Borneo, Java and all the eastern countries of Asia.

The Manufacturers building encloses a vast amount of exhibit space and every foot of this has been engaged for display purposes by domestic and foreign manufacturers. The interest manifested in this department of the Alaska-Yukon-Pacific Exposition is world-wide and competitive displays will be general and comprehensive. Exhibits are being daily received and the heavy work of installation is rapidly being accomplished.

DRAYAGE

We Haul Anything

Prompt Attention Given to All Orders

Two Wagons Constantly at Work

O. G. THORNTON
The Echo Drayman

GEO. KNAGGS

Blacksmith
Wagon Maker

Horshoeing and General Repair Work

..Satisfaction Guaranteed..
Solicit a Share of your patronage

Buckley Street, Echo, Ore.

Echo Livery Stable

BARNER & CUNHA, Props.

Under new management. First class livery rigs. Best of care taken of horses left in our charge. Good rigs, good horses. Hay and grain for sale. Come and see me.

ECHO, OREGON

A New Hotel In PENDLETON

Hotel Bowman

Judd Fish, Manager.

Rooms 50c to \$1.50
(With Bath)

U. D. HOLMES

Contractor and Builder

Estimates Furnished
On Application

HOTEL HOSKINS - Echo, Ore

For your next meal, try

The QUELLE

GUS LAFONTAINE, Prop.
Restaurant and Oyster House
Meals at all Hours 25c
Open all Night

OYSTERS,
CRACKED CRAB,
CRAWFISH,
CLAMS, ETC., ETC.

Everything New and Up-to-date
626 Main Street, Lafontaine Block.

F. KRAFT

House and Sign Painter
Paper Hanger.
Shop Main St., Next Door to George & Miller Co., Echo, Oregon

A. C. CRAWFORD

U. S. Land Commissioner
Hermiston, Oregon

W. E. THRESHER

LAWYER

ECHO, OREGON

F. R. DORN, M. D.

Physician and Surgeon.

ECHO, OREGON

J. FRANK SHELTON,

Attorney at Law.

ECHO, OREGON

R. H. JOHNSON,

Attorney at Law.

ECHO, OREGON

LODGE DIRECTORY.

Overland Lodge No. 23, I. O. O. F.—Meets every Saturday evening in the Odd Fellows' hall on Dupont street.

Henrietta Rebekah Lodge No. 36, I. O. O. F.—Meets second and fourth Wednesdays of each month in Odd Fellows' hall.

Umatilla Lodge No. 40, A. F. & A. M.—Meets first and third Saturdays of each month in the Masonic hall on Dupont street.

Fort Henrietta Camp No. 772, W. O. W.—Meets first and third Wednesdays of each month in Odd Fellows' hall.

CHURCH DIRECTORY.

Methodist Church—Sunday school at 10 a. m.; preaching at 11 a. m. and 7 p. m., every Sunday.

The World's Best

Chickering, Weber, Kimball,
Hobart M. Cable, Lester

and the

Genuine Pianola Piano

Victor, Edison, and Columbia Talking Machines and Records.

Eiler's Piano House

Dispensers of
Pianoreliability

813 Main St., Pendleton

Summer Rates East

During the Season 1909

via the

Oregon Railway & Navigaton Co.

OREGON SHORT LINE AND
UNION PACIFIC RAILROAD

for

Portland, Seattle, Spokane, Tacoma, Walla Walla and all points on The O. R. & N. line

To OMAHA and return - - \$60.00

To KANSAS CITY and return \$60.00

To ST. LOUIS and return - \$67.50

To CHICAGO and return - - \$72.50

and to other principal cities in the East, Middle West and South. Correspondingly low fares. On Sale June 2, 3, July 2, 3; August 11, 12

To DENVER and return - - \$55.00

On Sale May 17, July 1, August 11

Going transit limit 10 days from date of sale, final limit October 21st.

These tickets present some very attractive features in the way of stopover privileges, and choice of routes: thereby enabling passengers to make side trips to many interesting points enroute.

Routing on the return trip through California may be had at a slight advance over the rates quoted.

Full particulars, sleeping car reservations and tickets will be furnished by any O. R. & N. local agent, or

WM. McMURRAY, General Passenger Agent, Portland, Oregon