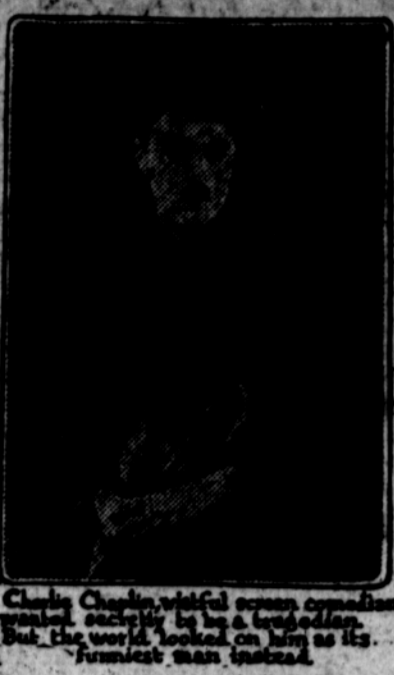


CHARLIE CHAPLIN PLAYS HIS COVETED TRAGEDY---BUT IT'S IN REAL LIFE



Charlie Chaplin, world's greatest comedian, is playing the part of a tragedian in real life.

Charlie Chaplin, world's greatest comedian, is playing the part of a tragedian in real life.

Charlie Chaplin, world's greatest comedian, is playing the part of a tragedian in real life.

Charlie Chaplin, world's greatest comedian, is playing the part of a tragedian in real life.

Charlie Chaplin, world's greatest comedian, is playing the part of a tragedian in real life.

Charlie Chaplin, world's greatest comedian, is playing the part of a tragedian in real life.

Charlie Chaplin, world's greatest comedian, is playing the part of a tragedian in real life.

Charlie Chaplin, world's greatest comedian, is playing the part of a tragedian in real life.

Society

Miss Dorothy Held, Editor

Saturday, Dec. 11.—College Club meeting has been changed from Mrs. E. E. Kelly's, 911 Queen Anne, Medford, to the Y. W. C. A. rooms, Medford.

Saturday, Dec. 11.—Daughters of the Nile meet in Medford at 2 p. m.

Saturday, Dec. 11.—Rainbow Class of the Presbyterian church meets at the home of Mrs. Dement, 502 Fairview street, at 7:30 p. m.

Monday, Dec. 13.—Art Club will have a Christmas party in the Civic Club House on Winburn Way.

Wednesday, Dec. 11.—Social Circle of Christian church meets in the church parlors at 2:30 p. m.

Monday, Dec. 13.—Ashland Study Club will meet at the home of Mrs. Louis Dodge on the Boulevard.

Monday, Dec. 13.—Epworth League Dramatic club meets at the M. E. church.

Tuesday, Dec. 14.—AC, P. E. O., will meet with Mrs. Sam McNair.

Tuesday, Dec. 14.—Upper Valley Community Club meets.

Tuesday, Dec. 14.—W. C. T. U. meets in the public library.

Wednesday, Dec. 15.—Auxiliary to Trinity Guild meets in the Parish House.

Wednesday, Dec. 15.—Missionary Society of the Presbyterian church meets in the church parlors.

Thursday, Dec. 16.—Baby Clinic club house, on Winburn Way.

United in Marriage—Miss Elsie Newby, daughter of Mr. and Mrs. E. T. Newby of Talent and Mr. Ernest Williams, son of Mr. and Mrs. T. N. Williams of Ashland, were united in marriage by the Rev. H. F. Pemberton in the Ashland Methodist Episcopal parsonage, Thursday, December ninth.

The young married couple have many friends both in Ashland and Talent, who will wish them much happiness and success in their future life.

Musicals at Presbyterian Church a Decided Success—The musicals given by the musical organizations of the high school at the Presbyterian church on Monday evening, December 6, was of unusual interest.

The work was directed by Miss Laura Raguse, who is music supervisor of the public schools. Ensemble effects attained by the orchestra and other groups were most excellent and Miss Raguse is to be congratulated on the success attained in such a short time.

Both the boys' and girls' glee clubs are larger this year than usual and are presenting some very interesting popular numbers. The orchestra lost some strong members this year, but a good many new players have volunteered who will soon work into the places.

Monday evening's program, which was really a contribution to the yearly program of the Ashland Music Study Club, called out a fine audience that taxed the capacity of the church. The students are assured a good audience when they give a similar event.

The Ashland Floral Society of this city at their last meeting, Monday, December sixth, in the public library, elected the following officers for the coming year: Mrs. Lewis H. Jacks, president; Mr. Harry Hosler, vice-president; Mrs. Frank Jordan, secretary and treasurer.

Those present enjoyed the in-

THE RAIL SPLITTER

(Published by the pupils of Lincoln public school)

CHRISTMAS STORY
It was the night before Christmas and Mr. and Mrs. Reacker and their son, Johnny, were sitting before the fireplace. Johnny asked how does Santa Claus come down the fireplace without burning himself? Well, said Mrs. Reacker, hesitating a moment. Well, he blows the fire out then comes down the chimney and puts presents that you want, if you have been a good boy. Then he goes up the chimney and that's why you find the fire out when you get up to find your Christmas presents.

NEWELL ELLIOTT
6 A GRADE

NEW MUSIC
Miss Marsters gave us a lovely three part song. We were very glad to have it for Christmas.

DOROTHY SLACK
6 A

PLANNING PROGRAM
The intermediate classes are getting up a Christmas program. The sixth grade is making up a play from "Little Women" by Louisa Alcott. We are also going to have a tree. We hope our program will be interesting as we are all trying to make it so.

JANET GOULD
6 A

FULLER PAINTS and VARNISHES
A paint and varnish for every need

J. O. RIGG
Best Paint—Best Workmen
Phone 172

STARTER GENERATOR BATTERY IGNITION COILS
TRY US!
We can give you the best of service on the above class of repair work.

Auto Electric Garage
522 East Main St.

1 6 5 You Need

1 Washday Each Week. Take Your Choice Of

6 At the Ashland Laundry and if you need all the other

5 we will be glad to call whenever you wish. And Get This:

"We Have The Service You Want When You Want It"

PHONE 1 6 5

ASHLAND LAUNDRY CO.

The Ashland Floral Society of this city at their last meeting, Monday, December sixth, in the public library, elected the following officers for the coming year: Mrs. Lewis H. Jacks, president; Mr. Harry Hosler, vice-president; Mrs. Frank Jordan, secretary and treasurer.

Those present enjoyed the in-

THE RAIL SPLITTER

CHRISTMAS STORY
Charles Warren brought us a nice Christmas tree. Children are bringing decoration for it.

5 B and 4 A Room
The 5 B and 4 A room is working out a dramatization of the story of The Holly Goblin for the Christmas program. Each division in the language class is working out a short dramatization of a Christmas story to be given Dec. 17.

WILLIAM SANFORD
6 A GRADE

A GROUP PARAGRAPH
We have been making hot dish mats in the fourth grade. These mats are going to be Christmas gifts. After the mats were made they were given several coats of shellac.

WAVA ARANT
LOOKS LIKE CHRISTMAS
Norman brought us a nice big fir tree. We have brought some decorations and also made some.

Hot Mineral Baths
Will keep you fit during the winter. Our mineral is a recognized cure for

Rheumatism
Jackson Hot Springs

Fresh Sweet Oranges
Fresh Sweet Oranges \$3 per box of three hundred large size. Boxes larger than standard size. Sound fruit and satisfaction guaranteed or money back. We pay express charges. A box of these makes an appreciated Christmas gift. Remit with order.

Acme Orange Farms
LaGrange, Texas

COME IN FOR BREAKFAST
We serve strictly fresh Ashland eggs and Swift's Premium ham and bacon. This is a delicious, satisfying breakfast for these cold mornings. You can't beat this breakfast for 45 cents.

TAVERN CAFE
JOE LANE

Special Rates

DURING XMAS HOLIDAYS
Special Round-Trip Tickets will be on sale to points listed below from December 18, 1926 to January 2, 1927. Final Return limit January 4, 1927.

Ashland	Medford	Grants Pass to	Portland
\$14.70	\$14.00	\$12.40	10.30
12.50	11.90	10.30	10.30
11.50	10.80	9.20	10.30
11.10	10.40	8.80	10.30
12.40	11.70	10.10	10.30
9.40	8.70	7.10	10.30
8.50	7.80	6.20	10.30

COMFORTABLE COACHES
Leave Ashland 7:00, 10:00 A. M., 3:45 P. M.
Leave Medford 7:45, 10:35 A. M., 4:30 P. M.
Leave Grants Pass 9:15 A. M., 12:30, 6:30 P. M.

Interurban Stage Co.
Ashland Hotel Phone 47

While Shopping

When you've made the round of the shops in an effort to complete your Christmas list, you'll enjoy dining out.

Shopping is tiresome and it's no wonder you dread the thought of cooking.

Instead you can rest, enjoy a good meal and excellent service.

LUNCHEON 65c DINNER \$1.00
Lithia Springs Hotel

Lithia Springs Hotel

and girls of Miss Bork's room at the Lincoln school, when she received a nice potted poinsettia for the room.

KARL MOORE
6 B

The Sixth grade of room 8 is having Studebaker Drills. The number of the drills run up to fifty. We have so many to do in five minutes. The ones who are in the lead are: Rudolph Pederson, Rachel Forsythe, Malcolm Meyer, Merle Wells.

WILLIAM SANFORD
6 A GRADE

A GROUP PARAGRAPH
We have been making hot dish mats in the fourth grade. These mats are going to be Christmas gifts. After the mats were made they were given several coats of shellac.

WAVA ARANT
LOOKS LIKE CHRISTMAS
Norman brought us a nice big fir tree. We have brought some decorations and also made some.

Hot Mineral Baths
Will keep you fit during the winter. Our mineral is a recognized cure for

Rheumatism
Jackson Hot Springs

Fresh Sweet Oranges
Fresh Sweet Oranges \$3 per box of three hundred large size. Boxes larger than standard size. Sound fruit and satisfaction guaranteed or money back. We pay express charges. A box of these makes an appreciated Christmas gift. Remit with order.

Acme Orange Farms
LaGrange, Texas

COME IN FOR BREAKFAST
We serve strictly fresh Ashland eggs and Swift's Premium ham and bacon. This is a delicious, satisfying breakfast for these cold mornings. You can't beat this breakfast for 45 cents.

TAVERN CAFE
JOE LANE

Special Rates

DURING XMAS HOLIDAYS
Special Round-Trip Tickets will be on sale to points listed below from December 18, 1926 to January 2, 1927. Final Return limit January 4, 1927.

Ashland	Medford	Grants Pass to	Portland
\$14.70	\$14.00	\$12.40	10.30
12.50	11.90	10.30	10.30
11.50	10.80	9.20	10.30
11.10	10.40	8.80	10.30
12.40	11.70	10.10	10.30
9.40	8.70	7.10	10.30
8.50	7.80	6.20	10.30

COMFORTABLE COACHES
Leave Ashland 7:00, 10:00 A. M., 3:45 P. M.
Leave Medford 7:45, 10:35 A. M., 4:30 P. M.
Leave Grants Pass 9:15 A. M., 12:30, 6:30 P. M.

Interurban Stage Co.
Ashland Hotel Phone 47

Mr. Rush helped some of the boys make the fireplace. We like our Christmas border of Santa Claus, fir trees and fireplaces. On the sand table we have the three wise men going to Bethlehem.

DOROTHY EASTMAN
2nd Grade

The fifth A and sixth B are making Christmas borders to put on the walls. We are making fireplaces, Santa Clauses and Christmas trees. One of the boys brought a Christmas tree to put in our room. We are making some Christmas tree decorations.

MILDRED URBAN
6 B

WAVA ARANT
LOOKS LIKE CHRISTMAS
Norman brought us a nice big fir tree. We have brought some decorations and also made some.

Hot Mineral Baths
Will keep you fit during the winter. Our mineral is a recognized cure for

Rheumatism
Jackson Hot Springs

Fresh Sweet Oranges
Fresh Sweet Oranges \$3 per box of three hundred large size. Boxes larger than standard size. Sound fruit and satisfaction guaranteed or money back. We pay express charges. A box of these makes an appreciated Christmas gift. Remit with order.

Acme Orange Farms
LaGrange, Texas

COME IN FOR BREAKFAST
We serve strictly fresh Ashland eggs and Swift's Premium ham and bacon. This is a delicious, satisfying breakfast for these cold mornings. You can't beat this breakfast for 45 cents.

TAVERN CAFE
JOE LANE

Special Rates

DURING XMAS HOLIDAYS
Special Round-Trip Tickets will be on sale to points listed below from December 18, 1926 to January 2, 1927. Final Return limit January 4, 1927.

Ashland	Medford	Grants Pass to	Portland
\$14.70	\$14.00	\$12.40	10.30
12.50	11.90	10.30	10.30
11.50	10.80	9.20	10.30
11.10	10.40	8.80	10.30
12.40	11.70	10.10	10.30
9.40	8.70	7.10	10.30
8.50	7.80	6.20	10.30

COMFORTABLE COACHES
Leave Ashland 7:00, 10:00 A. M., 3:45 P. M.
Leave Medford 7:45, 10:35 A. M., 4:30 P. M.
Leave Grants Pass 9:15 A. M., 12:30, 6:30 P. M.

Interurban Stage Co.
Ashland Hotel Phone 47

The 5 A and 6 B are making a theatre. We will use it in geography and other studies too. The first reel is of China.

WAYNE HARRIS
5 A Grade

Mrs. Andrews came to visit our room and we showed her our Onas Pow Wow paper. She thought it very good. I am sure we want her to come again.

CATHRYN DOYLE
5 A Grade

WAVA ARANT
LOOKS LIKE CHRISTMAS
Norman brought us a nice big fir tree. We have brought some decorations and also made some.

Hot Mineral Baths
Will keep you fit during the winter. Our mineral is a recognized cure for

Rheumatism
Jackson Hot Springs

Fresh Sweet Oranges
Fresh Sweet Oranges \$3 per box of three hundred large size. Boxes larger than standard size. Sound fruit and satisfaction guaranteed or money back. We pay express charges. A box of these makes an appreciated Christmas gift. Remit with order.

Acme Orange Farms
LaGrange, Texas

COME IN FOR BREAKFAST
We serve strictly fresh Ashland eggs and Swift's Premium ham and bacon. This is a delicious, satisfying breakfast for these cold mornings. You can't beat this breakfast for 45 cents.

TAVERN CAFE
JOE LANE

Special Rates

DURING XMAS HOLIDAYS
Special Round-Trip Tickets will be on sale to points listed below from December 18, 1926 to January 2, 1927. Final Return limit January 4, 1927.

Ashland	Medford	Grants Pass to	Portland
\$14.70	\$14.00	\$12.40	10.30
12.50	11.90	10.30	10.30
11.50	10.80	9.20	10.30
11.10	10.40	8.80	10.30
12.40	11.70	10.10	10.30
9.40	8.70	7.10	10.30
8.50	7.80	6.20	10.30

COMFORTABLE COACHES
Leave Ashland 7:00, 10:00 A. M., 3:45 P. M.
Leave Medford 7:45, 10:35 A. M., 4:30 P. M.
Leave Grants Pass 9:15 A. M., 12:30, 6:30 P. M.

Interurban Stage Co.
Ashland Hotel Phone 47

LANGUAGE WORK
The fifth and sixth B wrote stories about self control. After a while we are going to copy them in ink. Then we are going to make a book to put them in.

HAZEL MOORE
6 B

THE TABLEUX
We are going to give a tableaux at Christmas. The 5 A are going to give one and 6 B are going to give one too. They are in

(Please Turn to Page 5)

FARM AUCTION!

at MOUNT CREST RANCH
Thursday, Dec. 16th

One mile west of Hilt and 1 mile south Oregon line, 2 miles west Pacific Highway.

25 Head Livestock
Farm implements of all kinds, blacksmith tools, furniture and household goods.

Free Lunch at Noon
Watch for signboard on Pacific Highway.

A. E. Graham, Auctioneer
Reginald R. Parsons, Owner.

Remember The Date,
Thursday, Dec. 16th

10 lb. TURKEY FREE

WITH EACH USED CAR SOLD BETWEEN NOW AND CHRISTMAS.

Clearance Sale

RECONDITIONED FORDS
We must make room for Storage. We have cut the price on all our used cars for Quick Sale.

Claycomb Motor Co.
The Ford Garage

Lincoln Fordson

It DOES Make a Difference Where You Buy Your Ford