

# Society

Miss Dorothy Reid, Editor

### Calendar of Events—

**Friday, Oct. 29.—**Ladies of the Civic Club will give a Halloween party at the Civic Club house, for a hospital benefit.

**Saturday, Oct. 30.—**The Macabee ladies will give an old-fashioned Halloween dance in the Moose hall.

**Saturday, Oct. 30.—**Auxiliary to American Legion will have a food sale at Hardy Bros.

**Monday, Nov. 1.—**Neighbors of Woodcraft meet in I. O. O. F. hall. Election of officers and a covered dish banquet.

**Monday, Nov. 1.—**Ashland Floral Society will meet in public library at 8 p. m.

**Monday, Nov. 1.—**Ashland Study Club meets with Mrs. J. R. Robertson, 323 Almond St.

**Wednesday Nov. 10.—**The P. T. A. and the ladies of the Civic Club will give a reception at the Civic Club House for all the teachers in Ashland.

### Social Circle Meets—

The Social Circle of the Christian church met in the church parlors Wednesday, October 27.

Following a short business session, a delightful program was given by members of this organization. The Circle sang a song, after which a very impressive prayer was offered by Mrs. Katharine Morrison. Mrs. Nell Dunn gave a beautiful vocal solo, "Pal of My Cradle Days," accompanied at the piano by Mrs. W. E. Sanford. Two amusing recitations were given by Mrs. Sam Doremus and a clever reading, "Our Crowd," was given by Mrs. C. O.

Holman, which fit in nicely with the nature of the program.

A happy social time was spent in quilting, fancy work, and in preparing for the coming bazaar to be given December first.

There was a large attendance and all were very enthusiastic over having secured the splendid four-act drama which is to be presented by the Wright California Players at the Christian church on December first. This will be sponsored by the Social Circle and is a Biblical play.

Delicious refreshments of apple pie with whipped cream and coffee were served by the committee in charge. The meeting adjourned to meet again November 10.

### Class Has Membership of 561—

One of the interesting organizations of Ashland is the "White Elephant" class of the Christian Bible school. For many months this class had an average of three; reorganized in 1924, it has in two years attained an average of fifty-one, and has assumed a leading part in all church activities, furnishing all Christian Endeavor officers, nine Bible school officers and teachers and one member of the church board.

Chief among its numerous social affairs are its annual events—the Easter luncheon, the Halloween frolic and the December hog-killing breakfast.

Partly because it had for so long been considered a "white elephant" by the rest of the Bible school, the class, upon organization, jokingly called itself the "White Elephant" class and so much has been accomplished under that name that it has been made permanent.

The present efficient officers are Miss Artice Stockdale, president; Miss Bernice Phelps, enrollment secretary; Miss Ida Gosnell, secretary-treasurer; Ralph

Church, normal captain; Jimmie Briggs, high school captain and Dr. Maud Ingersoll Hawley is the teacher.

### Past Matrons Club Meets—

The Past Matrons Club of Alpha Chapter, No. 1, O. E. S., held its regular meeting at the home of Mrs. Hal McNair on Oak street, Wednesday evening, October 27.

Concluding the short business session, the members made posters for the bazaar to be given November 30. Mrs. Pansy Williamson, Past Matron of the Kappa Chapter, was a special guest.

Delicious refreshments were served by the hostesses, Mrs. Hal McNair and Miss Georgie Coffee.

### Food Sale at Hardy Brothers—

The Auxiliary to the American Legion will give a food sale at Hardy Bros. tomorrow afternoon. Two-hundred and thirty pints of apple butter will be sold.

### W. R. C. Meets—

The W. R. C. held their regular meeting in the I. O. O. F. Hall Monday afternoon, October 25. Between thirty-five and forty members were present.

The afternoon was a happily spent in social conversation and fancy work. The hall was cleverly decorated in Halloween colors and each guest was given a fancy, bright-colored cap.

Delicious refreshments of sandwiches, cake and coffee were served at tables artistically trimmed in Halloween colors with a Halloween napkin placed at each cover.

Hostesses for the afternoon were: Mrs. Jennings, Mrs. Howard, Mrs. Henry and Mrs. Stenmet, assisted by Frances Darby, Effie DeArmond, Martha Dahuff, Ella DeHass, Minnie Gearhart, Mary Gow, Sophia Gantere, Anna Gregory and Mrs. Erickson.

Dance at Civic Club—

The ladies of the Civic Club will give a public dancing party this evening at the Civic Club house on Winburna Way, for a hospital benefit.

Elaborate preparations have been made for this party and it is hoped that there will be a large attendance. The rooms will be decorated in Halloween colors of orange and black and fancy favors will be presented.

### England's Divorce Courts Now Active

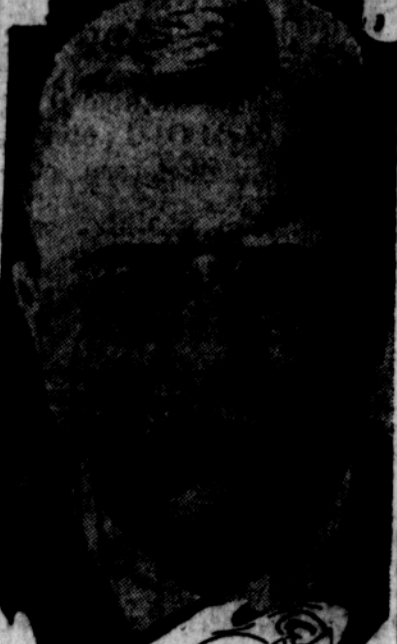
LONDON, Oct. 29.—More than 1,000 husbands and wives, tired of marital discord, are digging away the coverings of family scandals in preparations for England's autumn divorce court session.

The opening of the Earl of Cowley's suit for divorce from his wife, the former May Pickard, a New York chorus girl, on Tuesday, brought to the attention of society the fact that there were at present 876 petitioners for absolute divorce. The percentage of the stage and high society generally, both British and American, are represented in these pleas.

Three high court judges have already started the task of deciding whether or not the irksome shackles of matrimony shall be removed.

Of the petitions 630 are unfounded and unless the king's proctor, a sort of official snoper, whose job it is to keep divorce petitioners honest, finds reason to oppose these suits, the divorces will be granted automatically.

### Anniversary



Navy Day was to be observed on the anniversary of the birth of Theodore Roosevelt, Oct. 27. Roosevelt was born in 1858 and died on January 6, 1919.

### England Facing Serious Crisis

CARNARVON, England, Oct. 29.—(United News)—A determination to rouse England to the peril which confronts it industrially, was expressed by former Premier Lloyd George in a speech here Thursday.

### Germany Coal Experts To Come to Pittsburgh

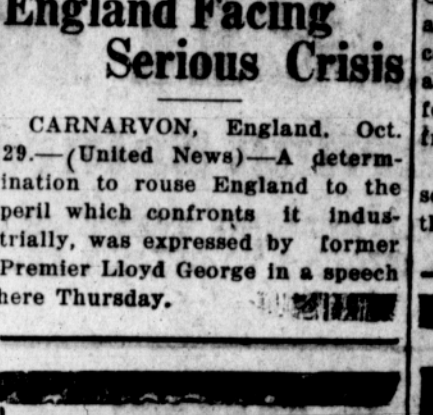
PITTSBURGH, Pa., Oct. 29.—(UP)—The Germans, considered the world's leaders in coal research, will send their leading scientists to American to describe their discoveries.

This step in international cooperation will be taken at the conference on Bituminous coal at the Carnegie Institute of Technology on Nov. 15 to 18. President Thomas S. Baker announced today.

Dr. Frederick Bergius and Franz Fischer will represent Germany at the meeting. They are the inventors of a process considered the most promising of all of the methods so far devised for the production of fuel oil from coal.

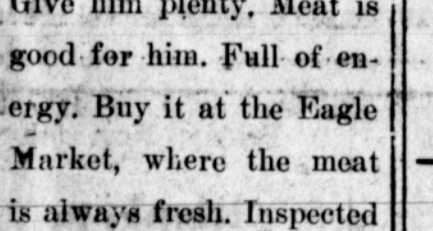
Foreign leadership in coal research is explained by the fact that America has a wealth of

### More Meat—Please



Give him plenty. Meat is good for him. Full of energy. Buy it at the Eagle Market, where the meat is always fresh. Inspected and passed!

Eagle Meat Market  
Phone 107



More School Buildings Proposed  
Bond Reduction Possible

As the taxpayers of our 18 grant land counties realize the great relief and how large is the sum coming to them through the enactment of the O. & C. Bill, they are planning new school buildings, and an increase and betterment in the teaching staff.

EIGHT MILLIONS of dollars turned loose in Oregon this fall is almost unbelievable, but this is a fact, thanks to the efforts of Robert N. Stanfield. In addition to this immediate cash payment, there is a tax reduction for all time of 25 per cent. One has only to ask any school director of these counties to realize to the full the wonderful relief from burdensome taxes the enactment of the O. & C. bill has permitted.

This tax relief was only possible by the holding of the Chairmanship of the Public Lands by Senator Stanfield. The further relief to be had through the Forest Reserve Lands can only be obtained by re-electing Robert N. Stanfield as Senator for Oregon.

Senator Stanfield proposes to apply this principle to the Forest Reserves, which will give every taxpayer in Oregon an additional reduction of from 25 to 40 per cent. Or in other words will give Oregon an increased revenue of from 11 to 15 MILLIONS of dollars yearly, and for all time to come. With this substantial reduction in our taxes, and bonded indebtedness, we may look for the immediate coming of Eastern capital and population, and an increase in the value of our own property.

This additional revenue could eventually permit the repeal of all automobile, road and gasoline tax.

You were denied knowledge of legislation proposed by Senator Stanfield, because the Morning Oregonian has and will sacrifice your best interests in order to seek its vengeance on anyone daring to oppose its own aggrandizement. The people of Oregon are a free people, owing their allegiance to their God, their country and themselves, and they will not submit to be ordered and dictated to by any selfish interest, no matter how powerful that interest or clique may be.

We who have been making homes in Oregon, establishing industries and pay-rolls, or working for wages, know how hard the struggle has been to make ends meet. There is only one hope for us, and that is relief from the excessive burden of taxation. Robert N. Stanfield, the present Republican Senator, whose advice and counsel is sought and respected by Senators and President Coolidge alike, has been the only representative Oregon ever had who has been able to actually reduce taxes. He is the only man who can continue to do so, as he and he alone can retain for Oregon the powerful Chairmanship of Public Lands.

Therefore, if you want to have the full benefit of reduction in taxation, and bring the full development of Oregon to pass within your lifetime, you must forget party or personal likes and whims and retain Senator Stanfield.

Oregon can suffer no greater disaster than the loss of the Chairmanship of the Public Lands Committee.

(Paid adv. by R. C. Taylor, Portland, Ore.)

**We Will Welcome You As A Shareholder**

**Regular Income From a Permanent Investment**

Public utility properties are built to endure. They render indispensable services, the demand for which increases steadily.

An investment in the Preferred Shares of this company is a permanent investment, safeguarded by substantial property values, growing business and sound management.

You can obtain a regular income from an investment in this company—dividends are paid regularly by check, every three months.

You can start investing today on the convenient monthly investment plan with as small a sum as \$5.

**You Should Know the Facts About Investment In Our Preferred Shares**

**THE CALIFORNIA OREGON POWER COMPANY**

OFFICES:  
Medford, Grants Pass, Roseburg, Klamath Falls—Oregon  
Yreka, Dunsmuir—California

**Exide BATTERIES**

See The Latest Improvements Also Prices

Batteries Recharged \$1.00 8-hour service

**XL ELECTRIC Station**  
GUY GOOD  
Phone 82  
Everything Electrical

**Exide BATTERIES**

See The Latest Improvements Also Prices

Batteries Recharged \$1.00 8-hour service

**XL ELECTRIC Station**  
GUY GOOD  
Phone 82  
Everything Electrical

**HERBERT'S GROCERY**

We Deliver

For Saturday We Have

Oysters, 5 oz. size  
15c per can

Bacon Backs  
35c pound

Codfish Bricks  
20c each

Bishop Cocoa  
1 pound pkg.  
25c

Spaghetti  
2 pound tins  
15c

Phone 59

**Fast—Rich**

Get Quick Quaker...  
Cooks in 3 to 5 minutes

HAVE hot nourishing breakfasts. Stop makeshift breakfasts simply to save time. Quick Quaker is faster than plain toast.

Hot, savory, nutritious; it's ready before the coffee.

Supplies the excellently "balanced" food ration of protein, carbohydrates and vitamins—besides the "bells" to make laxatives less often needed—that doctors and authorities now so widely urge.

Start every day that way. Feel better, look better, be stronger and on your toes every minute. Ask your doctor.

Your grocer has Quick Quaker—also Quaker Oats as you have always known them.

**Quick Quaker**

This is Ashland's Place To Find What It Wants To Get Sunday

# Market Basket

A Feature Page For Telling the Cooks About the Good Estates

"We are passing, with the coal strike, the greatest crisis since the war," he said, "and one that is, perhaps the most dangerous in our industrial history. It is particularly serious because it came at a time when we were beginning to recover."

**Business Is Always Good AT**

## Hardy Brothers

LOW PRICES, FOR RIGHT MERCHANDISE, WITH COURTEOUS SERVICE, MAKE IT SO.

—Here Are a Few of Our Regular Prices—

|                                |                                  |
|--------------------------------|----------------------------------|
| Jello—All Flavors ..... 10c    | Campbell's Soups ..... 10c       |
| H. O. Oats Either Kind, 15c    | Canned Milk, Tall ..... 10c      |
| Quick Quaker Oats, large, 20c  | Ender's Sauerkraut, 1 lb., 15c   |
| Corn Flakes, Kellogg ..... 10c | Best Standard Corn ..... 12 1-2c |
| Bran Flakes, Kellogg ..... 10c | Ender's Pumpkin, 1 lb., 15c      |
| Minute Tapioca ..... 18c       | Pint Ripe Olives ..... 15c       |
| New Stock Prunes ..... 10c     | Small Milk ..... 5c              |

Here Are a Few Specials for Saturday and Monday

|  |   |
|--|---|
| Those Fresh P. B. C. Chocolate Ecstasies<br>2 pounds for 50c | Knight's Famous Rogue River Catsup<br>Large Bottle 19c<br>For |
| High Grade Oreo Toilet Paper<br>3 Large Rolls 16c            | New Stock Sunmaid Raisins<br>3 pounds for 39c                 |

Cracked Corn—Eastern Kiln Dried ..... \$2.49  
A Guaranteed "20 percent Protein" Egg Mash, \$2.67

|   |   |
|---|---|
| Always Our Biggest Seller<br>Hardy Bros. Special Coffee<br>Only 50c Per Lb. | Our Regular 50c Grade<br>Fryes Bacon<br>45c Per Pound |
|---|---|

AMERICAN LEGION AUXILIARY  
FOOD SALE  
SATURDAY AT  
**HARDY BROTHERS**

*A Real Appetizer*

**Frye's Delicious BRAND ham**

**Frye's Delicious BRAND ham**

A keen appetizer for keen appetites—when a slice or two of Frye's "Delicious" Brand Ham is being served at ANY meal there's no waiting for tardy members of the family circle.

You will find this extraordinarily fine tasting Ham cured just as you would have it cured, to make it the perfect food.

Frye's "Meat Guide"—a collection of 187 recipes, many on how to prepare Ham—will be sent you by return mail on receipt of 2c to cover postage. Address Frye & Company, Seattle. You'll find Frye's "Delicious" Brand Ham

*Everything The Name Implies*