

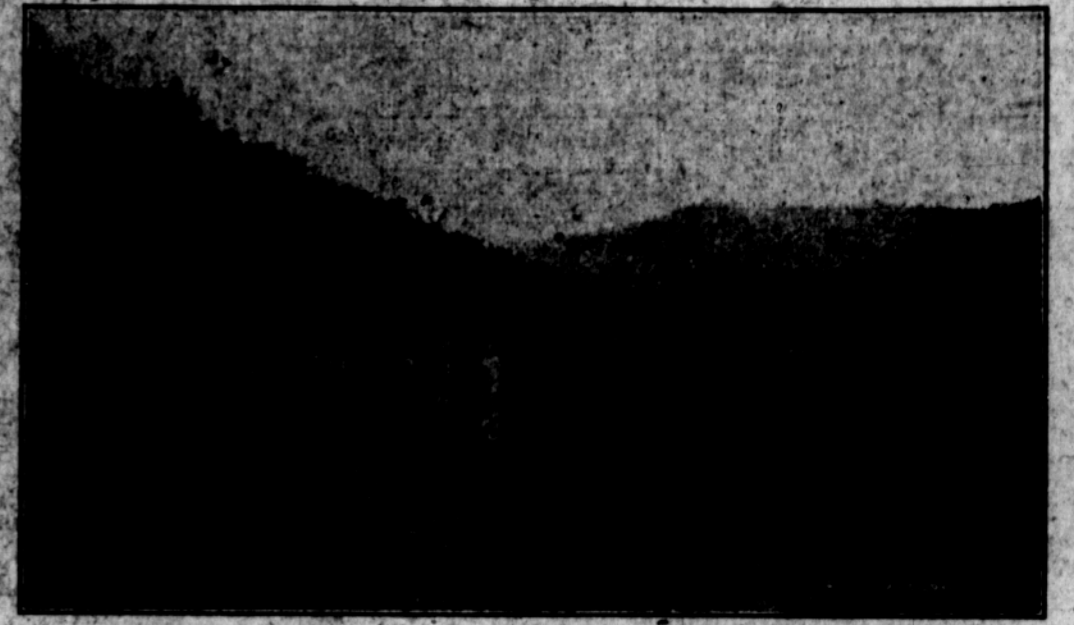
Southern Oregon - The Pacific Coast's Most Delightful Playground



Ashland is noted as a city of homes and schools. Above is the Ashland high school, a modern structure situated in ideal surroundings.



In the fall China pheasant hunting reigns in Oregon. Above are specimens of these game birds which are brought down by the thousands in Southern Oregon.



Here is a scene along the Pacific highway as it winds down the beautiful Siskiyou mountains into Ashland.

Where Nature Has Lavished Her Bounty

Southern Oregon, which is known as the Rogue river valley, and the Klamath Lakes country, has more to offer the visitor than any other section of the Pacific coast for those that love the great outdoors. We have mountains, lakes, rushing streams, and wonderful highways, and these lakes and streams abound with fish, and our forests abound with game and game birds just as they did years ago.

For a visitor coming into Oregon from California, as they start down the Siskiyou mountains, after crossing the state line, they get their first view of this beautiful Rogue River Valley.

Ashland is the first stop, and is so beautiful that the visitor regrets to have to leave, but they must see all of this wonderful land. Ashland has hotels for all classes of travelers, and an auto park for those who wish to camp, and Lithia auto park is by far the most beautiful of any other. Here a person can drink their fill of Lithia water, which is known the world over, and camp alongside of a dashing

mountain stream, all the time in the cool shade of the giant trees, and among the flowers of all color and grace.

A plunge in the Natatorium, which is filled with mineral water, will put new life in any person, also the outdoor plunge at Jackson Hot Springs, where the water comes out of the earth at a temperature of about seventy-five degrees. Cabins for rent to the traveler can also be had at Jackson Hot Springs, which are three miles north of the city.

Next we go north over the Pacific Highway for forty five miles to the City of Grants Pass. There you leave the highway and travel south west to the Oregon Caves, a distance of forty nine miles from Grants Pass. A very good resort where the visitor can receive all the comforts, and a two hour trip through the caves, having every wonder explained by a guide, is some thing long to be remembered.

Back to Grants Pass and on down the Pacific highway to the delightful city of Medford, which is the largest city in Southern Ore-

gon, and there the stranger turns to the northeast on the Crater Lake highway and for eighty five miles the thrilled visitor wishes they had many more eyes so as to be able to see all the beauty spots without missing a single one. But when they arrive on the brink of Crater Lake all sense of reasoning is lost, for here a sight never before dreamed of is presented. It is true that this is in a class all by its self for there is only one Crater Lake in the world and here it is in Southern Oregon. A thousand feet above the water, looking down into that blue water, a color that no artist has been able to reproduce, and as you stand there viewing this sight, the colors change, and the overcome person wonders if they are truly on this earth, or in the great beyond.

It is folly to try to describe the beauties of Crater Lake, all visitors must see its wonders and beauty for themselves.

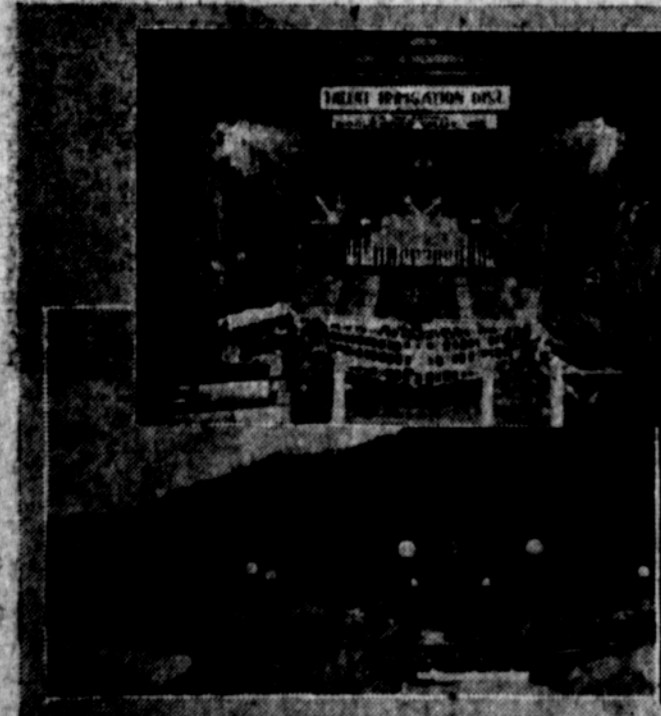
Next we go south to Klamath Falls, over The Dalles-California highway, a distance of sixty-five miles. For twenty miles of this distance you drive along the shores of Klamath

Lake, with Mt. Pitt and Mt. Shasta showing their snow covered mantles far up into the clouds. Klamath Falls is a Railroad center, and a sawmill city, some of the largest mills in the west are located there.

The drive from Klamath Falls back to Ashland, on the Pacific Highway is so different from any other drive we have taken. For miles the highway is cut through giant pine, and the largest stand of yellow pine in the entire world is along this highway. In crossing the Cascade Mountains on this drive at one time you are a mile high, and as the visitor winds his way out from among the forest, all at once it looks as though he had reached the end of the trail, and is looking down two thousand feet into the valley of the Rogue, and there nestled at the very foot of the mountains is the city of Ashland, more beautiful than our first view a week before from another highway.

All California, Oregon, and Washington good people come to Southern Oregon and enjoy its beauties with us.

THIS CAMPAIGN SPONSORED BY: TALENT IRRIGATION DISTRICT; CITY OF ASHLAND; JACKSON HOT SPRINGS; THE CALIFORNIA OREGON POWER COMPANY; ASHLAND LITHIA PARK BOARD; LITHIA SPRINGS HOTEL; ASHLAND NATATORIUM; ASHLAND HOTEL.



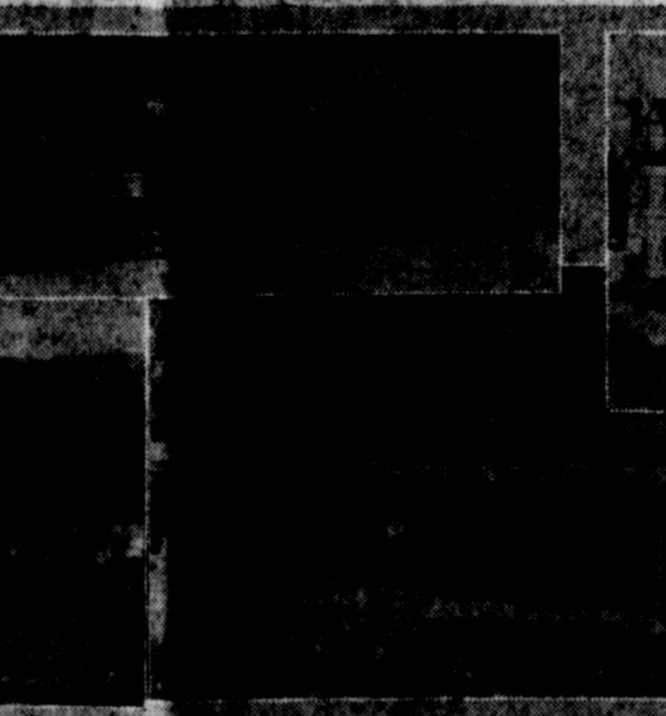
No. 1—This diversified exhibit shows what can be grown in the famous Talent Irrigation District near Ashland, and which evidences considerable acreage within the city limits of Ashland.



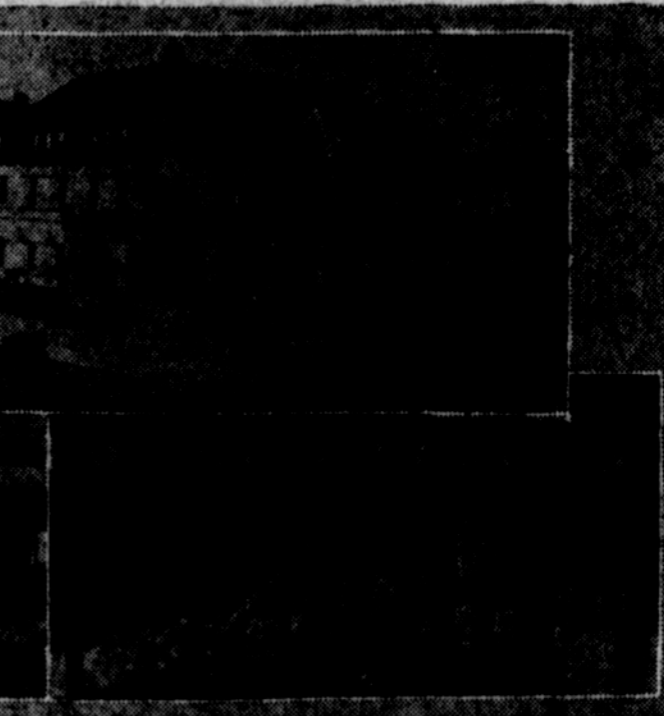
No. 2—Here is a summer scene in the outdoor mineral plunge at Jackson Hot Springs, two miles north of Ashland on the Pacific highway. This photograph was taken in April.



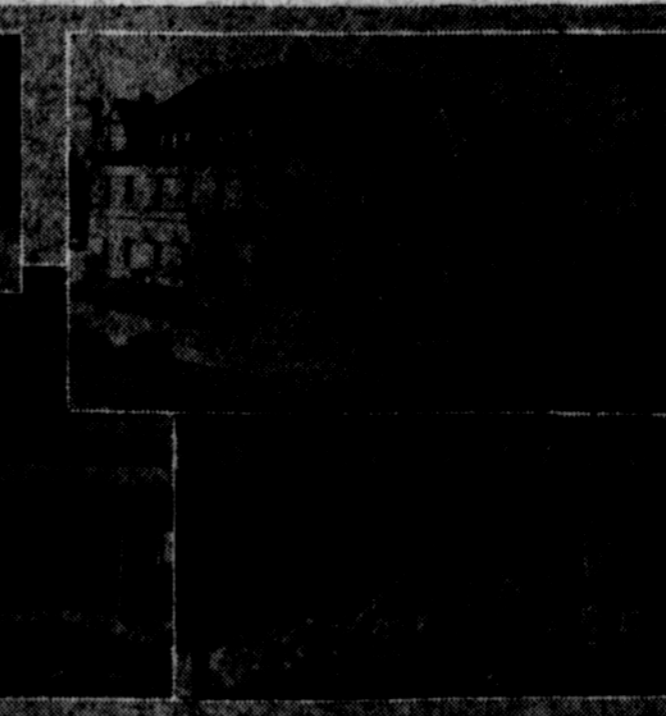
No. 4—Here is the Hotel Ashland, one of the landmarks of the city, with its broad full-length veranda and palms shading the lounging chairs during the summer months.



No. 5—This is a scene in Lithia Park, conceded to be one of the most delightful city parks in the Pacific northwest.



No. 6—Here is a view of the new Lithia Springs Hotel, which is fast winning its way into the hearts of the traveling public.



No. 7—An idea of the industrial development of Southern Oregon is gained from a view of this massive hydro-electric plant. It is Copco plant No. 1, of The California Oregon Power Company, one of the most potent factors in the development of Southern Oregon and Northern California.



No. 8—Last but by no means the least is this view of the Ashland Natatorium, with its two large enclosed plunges of both hot and cold mineral water. For swimming purposes or for health's sake, it is a favorite with auto tourists.

VISIT Ashland The Paradise for the Vacationist