

Ashland Auto Camp is Hub of Trips to Scenic Resorts

Crater Lake

Oregon's greatest of scenic attractions — Crater Lake — is now open for the 1926 summer season. The official opening of this noted national park is set for tomorrow

July 1 — but because of ideal weather conditions and because of the excellence of the roads, Crater Lake lodge has been thrown open to the public.

Summer tourists to Ashland should by all means take this trip to Crater Lake while in this section of the state. Two routes are available, and because of the excellence of the roadways and scenery, the entire circuit should be made if the tourist is to get the most out of it.

Crater Lake can be reached from Ashland either through Medford or Klamath Falls. If going in by Klamath Falls the motorist should come out by way of Medford, or vice versa. Both roadways are delightful drives and well worth the time of the tourist and vacationist.



ABOVE—COMMUNITY HOUSE LITHIA PARK BELOW—LOOKING WEST FROM ASHLAND

Lake of the Woods

For a side trip out of Ashland, and one which the visitor to this section will long remember, a week-end visit to Lake O' The Woods will be a genuine treat which will live long in the memories of those who are fortunate enough to make it.

Year by year Lake O' The Woods is becoming increasingly popular as a week-end resort for citizens of Ashland and for auto tourists generally. It is situated high up in the Cascades, within three hours driving distance from Ashland. It is a delightful body of water, where boating, fishing and other summer sports are available.

Visitors to Ashland should make it a point to inquire about Lake O' The Woods. It is one of the numerous scenic spots which is easily available from this city.

Ashland the Summer Resort

As a summer resort where vacationists can truly enjoy themselves, Ashland this year is coming into her own. Never before in the history of beautiful Lithia Park has it been so popular as it is at the present time. Almost nightly the cabins in the auto park are filled. Tents of all kinds and descriptions dot the camping spots beneath the evergreen trees bordering the rippling waters of Ashland Creek, which flows down from the mountains through this natural park.

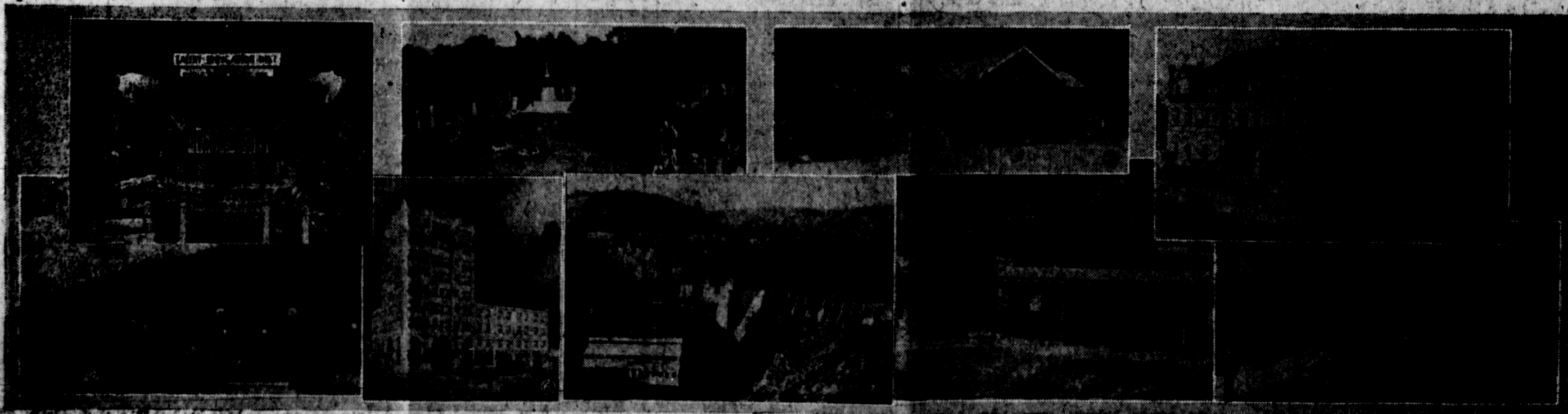
Public band concerts will start next week, with delightful summer evening music by the Ashland municipal band. On Saturday evenings, a cleanly conducted public dance is given in the big open-air pavilion within this delightful park. The dances, staged by the Lithians, the city's hospitality club, are making a decided hit with vacationists.

The mineral waters of Ashland and the resorts adjacent to the city are an important asset to the city's worth as a summer resort. At Ashland Natatorium two large mineral plunges are available to the public day and night. This natatorium is situated almost in the heart of the city, just two blocks south of the new Lithia Springs Hotel.

Out at Jackson Hot Springs is the big open air mineral plunge which is swarming with swimmers both afternoons and evenings of these marvelous summer days. Auto cabins and camping grounds are likewise available at this popular resort just two miles north of the city limits.

Truly, Ashland has much to offer the vacationist, the auto tourist and the person who is seeking better health.

THIS CAMPAIGN SPONSORED BY: TALENT IRRIGATION DISTRICT; CITY OF ASHLAND; JACKSON HOT SPRINGS; THE CALIFORNIA OREGON POWER COMPANY; ASHLAND LITHIA PARK BOARD; LITHIA SPRINGS HOTEL; ASHLAND NATATORIUM; ASHLAND HOTEL.



SCENIC FEATURES
No. 1—The celebrated ex-posed plants which can be grown in the famous Ashland Irrigation District near Ashland, and which produce considerable amounts within the city limits of Ashland.

No. 2—Here is a summer scene in the outdoor mineral plunge at Jackson Hot Springs, two miles north of Ashland on the Pacific highway. This photograph was taken in April.

No. 3—This is the rustic community house at Lithia Park, where all conveniences are provided for the auto tourist and picnicker.

No. 4—Here is the Hotel Ashland, one of the landmarks of the city, with its broad full-length veranda and palms shading the lounging chairs during the summer months.

No. 5—This is a scene in Lithia Park, conceded to be one of the most delightful city parks in the Pacific northwest.

No. 6—Here is a view of the new Lithia Springs Hotel, which is fast winning its way into the hearts of the traveling public.

No. 7—An idea of the industrial development of Southern Oregon is gained from a view of this massive hydro-electric plant. It is Copco plant No. 1, of The California Oregon Power Company, one of the most potent factors in the development of Southern Oregon and Northern California.

No. 8—This is one of the new type of double auto cabins built this spring in Lithia Park.

VISIT
Ashland
The
Paradise
for the
Vacationist