

TIMBER CONSERVATION IS FEATURE IN APRIL 'VOLT'

The activity of local lumber companies in reduction of waste by utilization of former waste products is a feature of Copco's April "Volt," which publication points out many interesting accomplishments of a number of Northern California and Southern Oregon sawmills tending to get more in the way of lumber and products from each log. Thinner saws, "knot hole plugs," and other interesting developments are mentioned, and it is pointed out that definite conservation of timber resources is achieved through these practices, as when more footage is obtained from each log, fewer trees have to be cut down to supply the existing demands for lumber and lumber products.

President Coolidge recently declared that "A tree saved is a tree grown," which sentiment is well exemplified by the work of the many sawmills in our midst tending toward the curtailment of waste in the various operations incidental to lumbering.

The picture layout shows a number of lumber plants and the efforts of these mills in timber conservation are briefly covered as follows:

The Fruit Growers Supply Company of Hill, California, which supplies boxes to the California Fruit Growers Exchange, (being a subsidiary company of the latter concern which is a co-operative corporation composed of about 75 per cent of the citrus fruit growers of California) has developed to a point of practicability a process of elimination of waste which they call the "gluend" process. This "gluend" process originated with the Sunnville, California, plant of the Fruit Growers Supply Company—the Hill plant took up their idea and made improvements. In manufacturing boxes, boards go

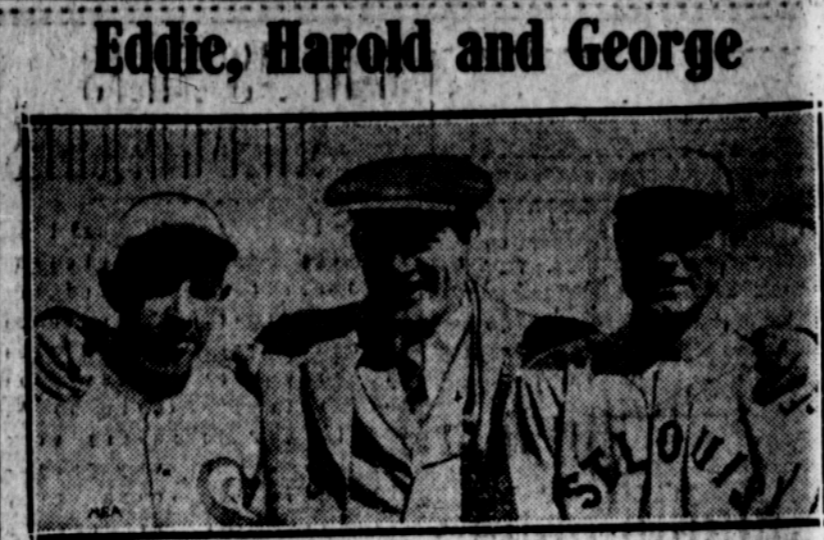
through a cutting-up process and are turned into smaller pieces. Waste of pieces unsuitable for use in the natural consequence of this cutting-up process. A large shrinkage exists between the amount of lumber put thru the remanufacturing planers, cut-off saws, resaws, and the amount actually loaded on the cars as finished box parts under the name of "box shook." This waste varies, depending upon the stock used, but is always a factor to be considered. Upon the reduction of this waste real conservation hinges. To state the matter in another way, a load of lumber containing exactly one thousand feet, board measure, comes in from the lumberyard to be remanufactured into box shook. It goes through the various machines, and defective pieces are tossed into the scrap-heap or wood pile, — and when this thousand feet gets on the car it has dwindled to less than nine hundred feet. The rejected pieces may have a knot in one edge which would make nailing up impossible, or they may have been too small for specified use— or some other definite reason has made it necessary to throw them aside. The "gluend" process consists of assembling these rejects, gluing them together into a piece of proper size, gluing a cleat across the ends of the assembled pieces, placing the resulting piece in a steel clamp until the glue has become thoroughly dry, and then resawing the piece into two "gluend" box ends, stronger than similar sized box ends made from one solid piece of lumber, and with the additional virtue that they will not warp and cause difficult in box-nailing machines in packing plants. The saving in waste by this process is approximately one-half, and the thousand feet of

lumber nets in finished shook

on the car nearly nine hundred and fifty feet instead of the former nine hundred. This makes the log go farther. The operation is somewhat expensive, but results in the fullest conservation of timber resources and earns a small profit.

At Weeg, California, the Weed Lumber Company uses a somewhat similar process in building up from various sizes of waste pieces, reclaimed from cutting operations, suitable fillers for veneer panels in the manufacture of doors. Doors made up in this way, subjected to the most severe tests, have proved superior to those made up with fillers of solid pieces of lumber between the veneer, as they are stronger and do not warp, the varying direction of the "run of grain" equalizing stresses and increasing strength.

The Ewauna Box Company of



Eddie, Harold and George
Three of the most famous athletes American colleges ever produced were photographed together at the first game of the American League season in Chicago. At the left is Eddie Collins, manager of the White Sox; center, Harold "Red" Grange, football star; right George Sisler, manager of the Browns.

Klamath Falls, Oregon, developed during 1924 the use of thinner saws, which results in more boards per log, as less waste results in the nature of sawdust. Experiments which are still being conducted by this concern along this line are being watched with great interest by other lumbermen. The Ewauna Box Company is now experimenting with a new development—a threaded "knot hole plug" which promises an appreciable saving in waste when used in the manufacture of veneer panels in the manufacture of doors. Doors made up in this way, subjected to the most severe tests, have proved superior to those made up with fillers of solid pieces of lumber between the veneer, as they are stronger and do not warp, the varying direction of the "run of grain" equalizing stresses and increasing strength.

The Ewauna Box Company of



THE SHASTA LIMITED NEEDS EXTRA POWER

There are several points along the Southern Pacific where two engines are needed to pull the Shasta over the steep grades. No matter how smoothly your business is running now, there are times when you need extra credit to pull you through. Maintaining a healthy bank balance during good times will help your credit at a time when you need it.

FIRST NATIONAL BANK

Hood Hip Rubber Boots

All kinds of fishing tackle that catch the big ones. Licenses

ARMY GOODS STORE
Biggest Little Store in Town
Opposite New Hotel — Open Evenings

FIRE BRICK FIRE CLAY RED AND CEMENT BRICK FACE BRICK

CARSON-FOWLER LBR. CO.
In the Heart of Town

RICHARDSON SPRINGS

"The Home of the Soft Shirt"
Near Chico, Butte Co., Calif.

Was just in your city for a day and do not blame you for leaving in the summer, but our baths and mineral waters will do wonders for your health this spring.

LEE RICHARDSON.

out to the proper diameter. Then the plug is automatically screwed into the revamped hole, this making a solid and substantial piece of lumber from the former low grade piece, improving the grade and general usefulness of the lumber subjected to this operation.

Willie Hunter Winner at Golf

OWENSMOUTH, Cal., April 20. (AP) — Willie Hunter, British amateur champion in 1921, and Santa Monica professional, is California state open golf champion for 1926.

Although Hunter did not play par golf in any stage of the tournament, which was held at the El Caballero Country club, near here, his consistency and steadiness enabled him to finish seven strokes ahead of his nearest competitor, George Von Elm, nationally prominent amateur. Hunter's total score for the 72 holes was 295.

Abé Eplacosa, San Francisco star, shared third place with Jack Tarrant, El Caballero pro. Both finished with 303 strokes.

MARSHALL OF FRANCE JUMPS OVER TABLE

PARIS, April 21.—(U.P.)—

TRUVY TALCUM

Soft and smooth as the petals of a new blown rose—an exquisite blending of Italian tale and the supremely fascinating Truvy Perfume.

Lithia Springs Pharmacy
Phone 116
Prescription Druggist
Lithia Springs Hotel Building

Marshal Lyautey, who retired last year as resident general of Morocco because of precarious health, proved at a banquet here that now, at the age of seventy-four he is by no means a feeble old man.

His speech was wildly applauded by yellow colonial officers and the distinguished soldier jumped over a table. He then turned to General Bican of the Algerian cavalry and ordered "Jump, Bican." The general jumped. Then the marshal challenged one of the younger officers, Colonel Faure of the Eleventh Cuirassiers, with "Jump, Faure." With considerable effort the colonel complied.

Roseburg—Strawberries ripe in Umpqua Valley, with fine crop prospect.

The utmost in a motor fuel usually comes from a maker that knows how to produce it.

"Union Oil of California" has had an experience of more than forty-three years.

Union Gasoline

Non-detonating

Union Gasoline provides, and always has provided to Western motorists, the non-detonating feature which supplies full power to the pistons throughout their entire stroke and eliminates all explosive "knocking" or "pinging" on the hills or in heavy pulling—a quality for which Eastern motorists are now buying "special gasolines" and paying 3 cents per gallon in excess of usual prices for them. Yet Union costs no more than other high grade fuels.

Always use Aristo Motor Oil with non-detonating Union Gasoline because this combination minimizes carbon to the extent that motors in good condition are run for several years without it.

Union Oil Company of California

"TO SERVE YOU"

Charter No. 67 Reserve Dist. No. 12

REPORT OF CONDITION OF THE CITIZENS BANK OF ASHLAND AT ASHLAND, IN THE STATE OF OREGON AT THE CLOSE OF BUSINESS, APRIL 12, 1926

RESOURCES

- Loans and discounts, including rediscunts, acceptances or bills of exchange, sold with endorsement of the bank (including items shown in 29, 30 and 32, if any) \$384,189.86
- Overdrafts secured and unsecured, including those shown in items 30 and 35, if any 171.65
- U. S. government securities owned, including those shown in items 30 and 35, if any 14,450.00
- Other bonds, warrants and securities, including foreign government, state, municipal, corporation, etc., including those shown in items 30 and 35, if any 117,040.34
- Stocks, securities, claims, liens, judgments, etc. 1,511.07
- Banking house, \$15,000; furniture and fixtures, \$5,000.00 20,000.00
- Real estate owned other than banking house 14,869.14
- (a) Cash on hand in vault and due from banks, bankers and trust companies designated and approved reserve agents of this bank 82,209.44
- (c) Net amounts due from other banks, bankers and trust companies 1,290.16
- Exchanges for clearing house and items on other banks in the same city or town as reporting bank 4,141.74
- Checks on banks outside city or town of reporting bank and other cash items 472.46
- Total cash and due from banks, items 8, 9, 10 and 11 \$88,113.80

Total \$640,345.86

LIABILITIES

- Capital stock paid in \$ 50,000.00
- Surplus fund 10,000.00
- (a) Undivided profits \$10,360.21
- (b) Less current expenses, interest and taxes paid 5,125.64 5,234.57
- Reserved for taxes, interest and depreciation 6,000.00
- Net amounts due to other banks, bankers and trust companies 1,306.99
- DEMAND DEPOSITS**, other than banks, subject to reserve:
 - Individual deposits subject to check, including deposits due the State of Oregon, county, cities or other public funds 269,139.87
 - Demand certificates of deposit outstanding 2,204.95
 - Cashier's checks of this bank outstanding payable on demand 962.87
 - Certified checks outstanding 781.67
 - Total of demand deposits, other than bank deposits, subject to reserve, items 23, 24, 25, 26 273,159.36
- TIME AND SAVINGS DEPOSITS**, subject to reserve and payable on demand or subject to notice:
 - Time certificates of deposit outstanding 82,020.38
 - Savings deposits, payable subject to notice 212,624.56
 - Total of time and savings deposits payable on demand or subject to notice, items 27 and 28 \$294,644.94

Total \$640,345.86

STATE OF OREGON, County of Jackson, ss:
I, V. O. N. Smith, Cashier of the above named bank, do solemnly swear that the above statement is true to the best of my knowledge and belief.
V. O. N. Smith, Cashier.

CORRECT—Attest:
J. P. DODGE,
W. M. POLLEY,
W. F. LOOMIS, Directors.

Subscribed and sworn to before me this 20th day of April, 1926.
L. A. ROBERTS, Notary Public for Oregon.
My commission expires April 20, 1929.

AN ELECTRIC SIGN

Draws Trade Like a Magnet

AN ELECTRIC SIGN KEEPS YOUR NAME, LOCATION AND BUSINESS BEFORE THE PUBLIC, DAY AND NIGHT, INCREASES YOUR STORE FRONTAGE FROM A FEW FEET TO HUNDREDS OF FEET — DEMANDS CONSIDERATION FOR YOUR BUSINESS WHEN PEOPLE ARE IN THE MOOD TO BUY — ATTRACTS THE EYE OF THE PASSERBY AND MAKES BUYERS OF THOSE WHO HAVE BEEN GOING ELSEWHERE.

A beautiful porcelain enameled steel Federal Sign with embossed letters will brighten up your store front, attract customers and increase your profits.

It cannot rot, fade or rust and never needs refinishing. An occasional washing keeps it sparkling like new.

Special Offer

Now is your opportunity. The Federal Sign representative is here now. Phone us for information on our 12 months to pay plan.

Phone 33

CITY OF ASHLAND

Electric Light and Power Department