

Classified Column
Classified Column Rates
One cent the word each time
To run every issue for one month or more, 1/2c the word each time.

FOR RENT
FURNISHED APARTMENT, garage, \$20.00. 266J. 90-3

FOR SALE
SPECIAL, two big lots well located with a small dwelling on them for the ridiculous small price of \$750.00. Beaver Realty Co. 82-1

BARGAIN—Boy's brand-new Scooter; inquire 135 B street.

FOR SALE—Christmas trees and wreaths. 93 N. Main St.

FOR SALE—Good six-room house, garage and wood shed, lot 50x145 for quick sale, \$2300.00 cash or see owner for terms, 132 5th street. 90-6*

FOR SALE—8 pure bred yearling and ancona laying hens, \$1.00 each. I fine ancona cocker Canadian stock, \$2.00. Mrs. Moore, 235 N. Main St. 89-1f

FOR SALE OR TRADE—Horse, harness, wagon. Inquire at 803 N. Main St. 88-6*

FOR SALE—\$4500 for 160 acres on elegant Ranch; stream through the place; fine fishing; good soil; clear of encumbrances; easy terms or will exchange for a home in Jackson county, as part or full payment. J. J. Deakin, Ashland, Oregon. 87-7*

FOR SALE—\$3500 for 15 acres berry land at Hillsboro, Oregon, small house; good barn; fenced; three-fourths mile from Pacific Highway; elegant water; terms to suit purchaser or will exchange for Ashland or Medford home; take or assume any difference. J. J. Deakin, Ashland, Oregon. 87-7*

MISCELLANEOUS
LOST—Saturday—Small dog, black with brown face. Ans. to name "Nick." 93 N. Main St.
LOST—Glasses in black case. Return to Ashland Electric Shop. 90-3t

See—**BEAVER REALTY CO.** for Bargains in Real-Estate. We also handle Insurance and Loans. 82-1f

DOCTORS SAY; DON'T NEGLECT COUGH OR COLD

Physicians warn against neglecting coughs and colds and tell of the serious lung complications that may result. Leading physicians now prescribe BALSAMEA for all bronchial affections. BALSAMEA is a pure vegetable preparation made from a newly discovered plant... Dr. Benj. F. Crabtree, Anderson, Mo., writes: "I use it exclusively for my practice and my family. It is quick, sure and safe in its action like nothing else."

Toward the end of the influenza epidemic a government physician noticed that a tribe of Indians in Nevada, by the use of oils from a native plant were immune from the ravages of influenza. He used these oils among his white patients and then in a hospital overflowing with 'death' cases. News of the results swept the world and for some time it was not possible to supply the demand.

BALSAMEA has now been standardized and gives uniformly miraculous results in four ways: 1. It soothes the inflamed membranes and relieves irritation. 2. It increases secretion of mucous and permits easy expectoration. 3. It stimulates pores of the skin in throwing off body poisons and 4. It strikes at the cause, checking germ action immediately.

Do not confuse it with ordinary balsam cough syrups that are only soothing syrups and do not go to the base of the trouble. Unlike other cough remedies BALSAMEA is free from coal tar and other harmful narcotics. Pleasant to take and absolutely safe to give to children.

Be sure you get BAL-SA-ME-A with the picture of the Indian on the package. Guaranteed to relieve any cough, no matter from what cause, or your money back. All druggists sell BALSAMEA. In Ashland buy it from Eastside Pharmacy.

BAL-SA-ME-A for CHRONIC COUGHS

St. Helens—Pulp and paper company incorporates for \$100,000, to start \$2,000,000 plant.

PROFESSIONAL

PHYSICIANS

DR. HAWLEY—Above Tidings office. Phone 91.

DR. C. W. HANSON—Dentist
Special attention given to pyorrhea. Office upstairs in Beaver Block. Phone 178-J. 233-tf.

DR. G. C. PHETTEPLACE—Dentistry
Gas or local anesthesia for extraction and minor surgery. Special attention given to straightening and care of children's teeth.

Above Citizens Bank Phone, Office, 151—Res., 201-J

DR. ERNEST A. WOODS—Practice limited to eye, ear, nose and throat—X-ray including teeth. Office hours, 10 to 12 and 2 to 5, Swedenburg Bldg., Ashland, Ore.

DIL. E. B. ANGELL—Chiropractic and Electro-Therapy. Office phone 48; residence 142, First National Bank building.

THE SOUTHERN OREGON CLINIC
1st National Bank Bldg. Medical Surgical Obstetrical Diagnostic X-ray
R. W. Stearns, M. D.
R. E. Green, M. D.
R. W. Sleeter, M. D.
Office hours 2-5 p. m. Phone 238-R

CONVALESCENT HOME
Where the sick get well. Cottage plan. We board and care for invalids and old people. Maternity dept. Call 153.

MONUMENTS

ASHLAND GRANITE MONUMENTS
Blair Granite Co.
S. PENNINGTON, Manager
Office 175 E. Main
Res. Phone 444-Y

ANY GIRL IN TROUBLE—May communicate with Ensign Lee of the Salvation Army at the WhiteShield Home, 565 Mayfair Ave., Portland, Oregon.

PLANING MILL

JORDON'S SASH AND CABINET WORKS, Cor. Helman and Van Ness. 194tf

TRANSFER AND EXPRESS
Whittle Transfer & Storage Co. for SERVICE.
Experienced movers and packers of household goods. Dealers in coal and wood. Phone 117.

Office 89 Oak St. near Hotel Ashland

T. I. POWELL—General Transfer—Good team and motor trucks. Good service at a reasonable price. Phone 83.

FEHIGE-ROACH
Transfer—Express—Storage Hauling—Dray work of all kinds. Quick motor service. Dry wood of all kinds. Phone 410-R 375 B. St. 112-tf

WOOD SAWING

WANTED—Wood sawing. Tel 470-J. 63-1m*

For a smooth shave and quick service go to the Shell Barber Shop. Ladies and children get your hair bobbed and marcel led.
W. A. SHELL, Prop.
32 A. St. Ashland, Or.

To Cure a Cold in One Day
Take
Bromo Quinine tablets
The First and Original Cold and Grip Tablet
Proven Safe for more than a Quarter of a Century as an effective remedy for COLDS, GRIP, INFLUENZA and as a Preventive.
The box bears this signature
E. W. Brown
Price 30c.

Albany—Public utilities pay tax on \$3,684,072 investment in Linn county, Southern Pacific on \$1,500,292; Mountain States Power Co. on \$333,952.67; and Oregon Electric on \$352,596.

Society

Miss Edith Dodge, Editor
Phone items to her at 39, between 8 a. m. and 5 p. m.

CALENDAR OF EVENTS
Wednesday, December 17. Auxiliary to Trinity Guild will meet in Parish house.

Thursday, December 18. Elks Ladies Club will meet in club rooms.

Sunday, December 21. Presbyterian Cantata will be given in the evening at the Presbyterian Church.

Monday, December 22. Ashland Music Study Club will have regular meeting at 7:45 in Library.

Junior-Senior Prom

Outstanding in events for the young people this season was the Junior-Senior Prom which was given at the Civic Club House last evening under the direction of the parents of some of the group. About one hundred and twenty-five of the young people of both classes gathered at eight o'clock at the clubhouse to spend the hours until eleven o'clock enjoying a short program and dancing. Music was furnished by the junior and senior members of the high school orchestra who showed themselves very capable along that line. The player piano at the clubhouse also furnished a small part of the music.

A short but excellent program was given during the evening and greatly enjoyed by the young people. Much credit is due Riley Pittenger, president of the senior class for his capable management of the affair and also due the committees who worked very faithfully to make the evening a success.

Patrons and patronesses for the affair were Messrs and Mesdames A. C. Joy, F. D. Wagner, R. Perozzi, Cleo Howell the junior class advisor, Miss Templin and the senior advisor, Mr. Hughes. Bringing the evening to a delightful close was the presentation by Miss Carol Van Dyke in behalf of individual bouquets to the patrons and patronesses of the affair, who fittingly expressed their appreciation.

The prom was such a success in every way that it is hoped to have more of the affairs before the close of the season.

Surprise Party

A very unique and happy party was held at the J. H. McGee home at Vista Heights when twenty-four of her friends decided to surprise Mrs. McGee, honoring her birthday. Complete was her surprise when on returning from a neighbors home she found a "kid" party in full swing and found the "kids" were her friends.

Entering joyfully into the spirit of the occasion a gift package from each friend was opened amid an uproar of hilarity over the original verses and quaint toys found therein. Some lovely gifts were also presented to Mrs.

ANY SKIN ERUPTION HEALED WITH SULPHUR

Irritation and Breaking Out Often Healed Over Night, Says Skin Specialist

Any breaking out or skin irritation on face, neck or body is overcome quickest by applying Mentho-Sulphur, says a noted skin specialist. Because of its germ destroying properties, nothing has ever been found to take the place of this sulphur preparation that instantly brings ease from the itching, burning and irritation.

Mentho-Sulphur heals eczema right up, leaving the skin clear and smooth. It seldom fails to relieve the torment or disfigurement. A little jar of Rowles Mentho-Sulphur may be obtained at any drug store. It is used like cold cream.

CREAM FOR CATARRH OPENS UP NOSTRILS

Tells How To Get Quick Relief from Head-Colds. It's Splendid!

In one minute your clogged nostrils will open, the air passages of your head will clear and you can breathe freely. No more hawking, snuffing, blowing, headache, dryness. No struggling for breath at night, your cold or catarrh will be gone.
Get a small bottle of Ely's Cream Balm from your druggist now. Apply a little of this fragrant, antiseptic, healing cream in your nostrils. It penetrates through every air passage of the head, soothes the inflamed or swollen mucous membrane and relief comes instantly.
It's just fine. Don't stay stuffed up with a cold or nasty catarrh—Relief comes so quickly.

McGee.
The costumes were very clever and realistic representing French dolls, Raggedy Anns and Andys and many other characters.
The evening was spent playing "kid" games, spinning the plate, playing forfeits, charades until a late hour when an appetizing two-course luncheon was served by the guests. Congratulations and best wishes were extended to the guest of honor at the close of a delightful evening.

Entertain Young People—The young people of the Nazarene Church were charmingly entertained at the home of Mr. and Mrs. Ramey of Harrison street Tuesday evening. A very pleasant evening was spent playing games and a very interesting feature was a taffy pull which afforded much amusement among the young guests. The house was prettily decorated with Christmas greens making a jolly background for the party. Late in the evening refreshments were served to add the finishing touch to a very pleasant evening.

Civic Meeting—
"Stories from Snow land" told by Mrs. William Glenn was the feature of Tuesday's meeting of the Civic Club.

Mrs. Glenn has appeared before on the Civic Club program, and many were looking forward to this opportunity to hear her tell her wonderful experiences in far away Alaska. The speaker had gone to the Northland in 1906 and came out in 1921, so the stories to which the audience listened were gleaned from many years' residence there. A part of this time Mrs. Glenn was teaching in the Government school and for part she was with her husband on many a prospecting trip, and in their wilderness home.

The vivid descriptions of these trips, dangerous and difficult, of the lonely life on the claim (at one time a period of three years elapsed without seeing another woman), were intensely interesting.

The preparations for the winter's food supply, which involved hunting, fishing, the storing of vegetables (for vegetables may be raised sixty-eight and one half degrees north) were arduous tasks. The houses are built of logs and moss, and in the cellar, vegetables may be kept with out freezing although icicles hang from wall and window sill, and ice forms in the stove pipe.

The Alaskan animals, birds, fish and flowers; the characteristic and customs and many a story of the Indian were some of the things touched upon in her address. "Nowhere else," said the speaker, "is American womanhood so revered as in the shadow of the Arctic circle." At a Christmas dinner, given by Mr. and Mrs. Glenn, four men walked forty miles to be present. There were all the delicacies belonging to the Christmas feast, the pretty tree but no presents, in that frozen wilderness of ice and snow.

The great coal fields, the 35,000 square miles set aside recently as an oil reserve, the wonderful beauty and grandeur of the land were mentioned, but the larger part of the time was given to the personal experiences that were hers in this land of opportunity. Their last trip, coming down the river to Wiseman and then on for the 700 miles to come out, reads like a romance.

In spite of the inclemency of the weather there was a goodly number of the club and its friends to enjoy this wonderful travel-talk.
At the close of the address, tea was served, with Mrs. Louis Dodge and Mrs. Karl Nims presiding at the tea table in gay holiday attire, for as a centerpiece was the prettiest of Xmas trees in gay trappings and dainty candles.
There was no business meeting and the executive board session was held yesterday that all the time could be given the speaker. The club appreciates Mrs. Glenn's graciousness in sharing with it her life in the far North.

Dinner Party—
Mr. and Mrs. F. G. Swedenburg were hosts at a delightful dinner party given at their home Sunday evening. A delicious six-course dinner was served. The table was decorated with a profusion of Christmas greens and the red and green color scheme used throughout the dinner.

The evening was spent enjoying stories of the European trip taken several months ago by Mr. and Mrs. Swedenburg.
Guests for the evening were Messrs and Mesdames Victor Mills,

Stanley Robinette and Miss Taverner.

Bazaar—
The bazaar given Saturday by the members of the Christian Endeavor of the Christian Church was very successful as about \$81 were cleared. Needlework, candy and cooked foods were on sale, and disappeared quite rapidly as a number crowded into the hall when the bazaar was given, Miss Mabel Hagar, president of the organization wishes to thank everyone that assisted in any way in the bazaar.

PAINTED TALLY CARDS
Among the delightful gifts that even an amateur artist can make are tally and score cards. Every hostess who receives them will be twice pleased, for no gifts are so cherished as those made by the donor. A graceful decorative design is shown in the illustration, simply as a suggestion—for there is no end to ways in which the characters on playing cards are introduced in decorations.

SILK VANITY CASES
Every Christmas brings its gay new vanity cases to replace those whose bright careers are finished. Here are two of them, made of black satin, lined with light silk, bound with gold braid and prettily decorated with gold lace and ribbon flowers. A little, attached mirror and a powder puff proclaim their willingness to serve the cause of beauty.

Fruit Cakes
for your Christmas dinner, that will delight you. Why go to all the trouble to make a fruit cake when we can supply such delicious ones at a reasonable price?
The Franklin Bakery
Phone 199

Cedar Chests
with or without trays will prove her most welcome Christmas gift.
THE ASHLAND FURNITURE COMPANY
88 N. Main

GOLDEN ERA HERE HOBOS QUIT ROAD TO LOOK FOR JOBS
NEW YORK, Dec. 17.—Wall Street is not only indication of the nation's prosperity. Down along the cold shadows of the Bowery, and up in the chilly confines of Madison Square Park, where income-tax reports cause no worry, New York's great "leisure class" has decided to go to work. The cheerful philosophers of the park bench have felt the call of labor.
At the State Employment Bureau, where a man can apply for any kind of work and usually get it, they find themselves for the first time in years with more applicants than jobs. Men who formerly were content to accept a nice, soft jail sentence for the Winter have flooded the bureau with demands for work. Every day there are at least 100 more applicants than places. Weary-eyed men of the Bowery have suddenly remembered that once they were artisans, with trades—Bricklaying, carpentry, plumbing.
In the office of the Charity Organization Society the records show that in the last two days forty-nine homeless men applied for work. This is ten more per day than applied in October and November. Anything that is work is accepted by the erstwhile hoboes. Porters, doormen and cook's occupations seem to be the chosen branches at this office. And it is not unusual, according to Miss MacNamara, who is in charge of the employment division, to see a dreamy-eyed man come in and ask for a chance to play a part in "Hamlet" again.
When the cold weather suddenly swooped down upon the great city, charity organizations looked forward to the usual rush for shelter. But the golden era has arrived. Madison Square harbors only the few faithful characters who feel it a violation of sacred principle to think of work.



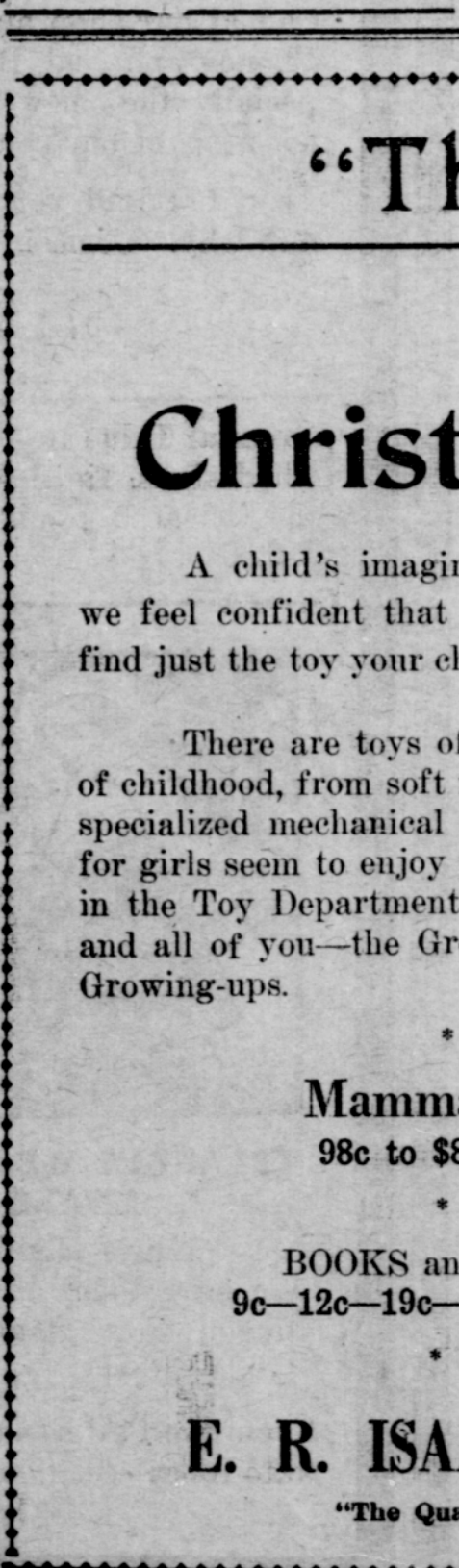
WHEEL GOODS
Automobiles
Coasters
Kiddie Cars
for Children



Simpson's Hardware
Winchester Store

Travel By Motor Stage
Safely, Swiftly and Comfortably
From Ashland
Effective Nov. 30th
Daily to Portland 7:00 A. M.
Daily to Eugene 12:00 Noon
12:00 noon Stage connects to Portland following morning.
We take passengers for all way points; for further information and tickets call Hotel Ashland office phone 47.
FARE ASHLAND—PORTLAND \$8.20

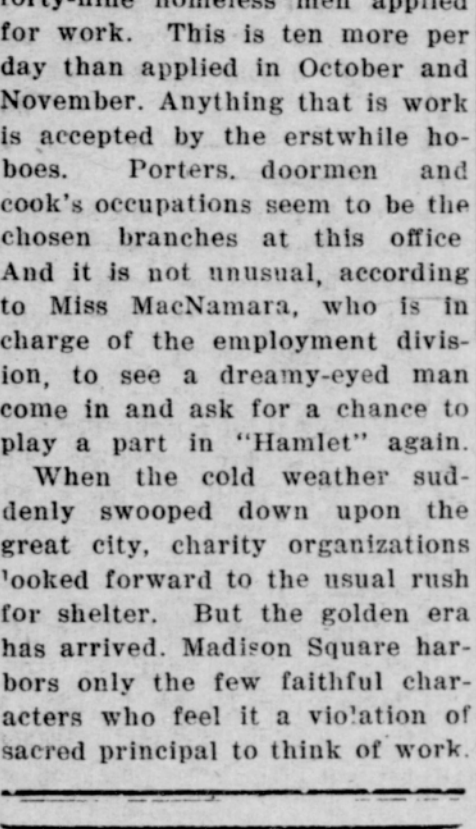
"The Christmas Store"
At
Christmas Time
A child's imagination knows no bounds they say, but we feel confident that in our TOY DEPARTMENT you will find just the toy your child pictures.
There are toys of all sorts and descriptions for all ages of childhood, from soft rubber balls for the wee folks, to highly specialized mechanical toys for developing boys and girls—for girls seem to enjoy them too. Santa reigns in the Toy Department and will welcome any and all of you—the Grown-ups as well as the Growing-ups.
Mamma Dolls 98c to \$8.95 each
BOOKS and GAMES 9c-12c-19c-24c-44c each
E. R. ISAAC & CO
"The Quality Store"



BURNS
Cover with wet baking soda—afterwards apply gently—
VICKS
VAPORUB
Over 17 Million Jars Used Yearly

Better Ask
It costs nothing to ask questions and it may save you annoyance and serious loss. The officers of this bank are pleased to co-operate and advise with their customers.

The Citizens Bank of Ashland
Ashland, Oregon



It's Playtime now in sunswept California
Go there this winter
Travel in secure, cozy comfort via the convenient trains of the Shasta route.
And you'll like Southern Pacific dining car service—highest quality food deliciously prepared and served at your accustomed meal time.
Low roundtrip excursion fares; full stopover privileges.
For full information, ask G. N. Kramer, Local Agent. Phone 14 or 43

Southern Pacific
Travel By Motor Stage
Safely, Swiftly and Comfortably
From Ashland
Effective Nov. 30th
Daily to Portland 7:00 A. M.
Daily to Eugene 12:00 Noon
12:00 noon Stage connects to Portland following morning.
We take passengers for all way points; for further information and tickets call Hotel Ashland office phone 47.
FARE ASHLAND—PORTLAND \$8.20

"The Christmas Store"
At
Christmas Time
A child's imagination knows no bounds they say, but we feel confident that in our TOY DEPARTMENT you will find just the toy your child pictures.
There are toys of all sorts and descriptions for all ages of childhood, from soft rubber balls for the wee folks, to highly specialized mechanical toys for developing boys and girls—for girls seem to enjoy them too. Santa reigns in the Toy Department and will welcome any and all of you—the Grown-ups as well as the Growing-ups.
Mamma Dolls 98c to \$8.95 each
BOOKS and GAMES 9c-12c-19c-24c-44c each
E. R. ISAAC & CO
"The Quality Store"

