

Classified Column

Classified Column Rates
One cent the word each time.

To run every issue for one month or more, 1/2c the word each time.

FOR RENT

FOR RENT: — Two house-keeping rooms, suitable for school girls, 440 Hellman St. 308-24

FOR RENT: — Nice front apartment, Phone 363R or call Shook Bldg. 308-2

FOR RENT:—Furnished room with or without housekeeping privilege; also good garage. Mrs. Daugherty, 55 Pine St. 287-12*

FOR RENT:—Furnished sleeping rooms, 1165 East Main St., 11-2 block from high school. 299-12*

FOR RENT: — Eighty acre farm, seven miles east of Ashland on Pacific highway. For information apply to Mollie Sogser, 45 Helman St. Ashland. 303-10*

FOR SALE

FOR SALE: — About three dozen Plymouth Rock Hens, 322 Wimer St. 308-2*

FOR SALE:—Saw mill, 20,000 capacity; practically new. Box 117 Montague, Calif. 305-6

FOR SALE or TRADE:—160 acre ranch, Missouri River bottom land, within 8 miles Minot, North Dakota. If interested call or write G. S. Butler. 300-1mo

FOR SALE:—R. I. Red fryers milk fed, crate fattened, Maxedors, 977 B St. 271-2mo*

I NEGOTIATE SALES

Don't get excited about it, but just bear in mind that now is a good time to buy real estate in Ashland.

I have a good little restaurant for sale, \$300 will take it.

Good country store business on paved highway, \$3000 will handle it.

I have another big surprise for you very soon. But don't get excited. Just buy some of the good offerings.

I have another good net 15 per cent income property.

STAPLES' AGENCY
Office, Hotel Ashland Bldg. Phone 26

MISCELLANEOUS

GET YOU STOVE repaired at Eagle Foundry. Boch Magnito Radiator and Stoves for sale, 140 Oberlin St. 306-1 mo.*

WANTED: — To care for children by the hour, day or week or any length of time. Vivian Reese, 162 Alida St. 308-2*

RENEWED TESTIMONY

No one in Ashland who suffers headaches or distressing urinary ills can afford to ignore this Ashland woman's twice-told story. It is confirmed testimony that no Ashland resident can doubt.

Mrs. S. C. McDonald, 685 B. St., says: "I know from personal experience Doan's Pills cannot be equaled for kidney trouble. I have taken them on several occasions for a lameness through my kidneys and it only required a few to relieve me of the misery. Doan's have also proven a splendid remedy for another member of the family who had considerable trouble with his kidneys." (Statement given March 15, 1916.)

On March 19, 1920, Mrs. McDonald, said: "I seldom have any sign of kidney trouble and give Doan's the credit."

Price 60c, at all dealers. Don't simply ask for a kidney remedy—get Doan's Pills—the same that Mrs. McDonald had. Foster-Milburn Co., Mfrs., Buffalo, N. Y. No. 40

A Good Thing - DON'T MISS IT.

Send your name and address plainly written together with 5 cents (and the slip) to Chamberlain Medicine Co., Des Moines, Iowa, and receive in return a trial package containing Chamberlain's Cough Remedy for coughs, colds, croup, bronchitis, "flu" and whooping coughs and tickling throat; Chamberlain's Stomach and Liver Tablets for stomach troubles, indigestion, gassy points that crowd the heart, biliousness and constipation. Chamberlain's Salve, needed in every family for burns, scalds, wounds, piles and skin affections; these valued family medicines for only 5 cents. Don't miss it.

The CALIFORNIA OREGON POWER COMPANY
Preferred Stock yields **7.14%**
ask any member of our organization

PROFESSIONAL

PHYSICIANS

DR. HAWLEY—Above Tidings office. Phone 91.

DR. C. W. HANSON
Dentist
Special attention given to pyorrhea. Office upstairs in Beaver Block. Phone 178-J. 233-4f.

DR. ERNEST A. WOODS—Practice limited to eye, ear, nose and throat—X-ray including teeth. Office hours, 10 to 12 and 2 to 5, Swedenburg Bldg., Ashland, Ore.

DR. MATTIE B. SHAW—Residence and office, 103 Pioneer avenue. Telephone 28. Office hours, 10 to 12 a. m.; 2 to 5 p. m. only.

DR. E. B. ANGELL—Chiropractic and Electro-Therapy. Office phone 48; residence 142. First National Bank building.

MONUMENTS
ASHLAND GRANITE MONUMENTS
Blair Granite Co.
S. PENNISTON, Manager
Office 175 E. Main
Res. Phone 444-Y

ANY GIRL IN TROUBLE—May communicate with Ensign Lee of the Salvation Army at the WhiteShield Home, 565 Mayfair Ave., Portland, Oregon.

PLANING MILL
JORDON'S SASH AND CABINET WORKS, Cor. Helman and Van Ness. 1944f

TRANSFER AND EXPRESS
Whittle Transfer & Storage Co.
for SERVICE.
Experienced movers and packers of household goods. Dealers in coal and wood. Phone 117.
Office 89 Oak St. near Hotel Ashland

F. L. POWELL—General Transfer—Good team and motor trucks. Good service at a reasonable price. Phone 83.

FERIGE-ROACH
Transfer — Express — Storage
Hauling — Dry work of all kinds. Quick motor service. Dry wood of all kinds. Phone 410-R
375 B. St. 112-4f

W. A. SHELL, Prop.
532 A. St. Ashland, Ore

For a smooth shave and quick service go to the Shell Barber Shop. Ladies and children get your hair bobbed and marcelled.

Hall's Catarrh Medicine will do what we claim for it—tid your system of Catarrh or Deafness caused by Catarrh.
Sold by druggists for over 40 years
F. J. CHENEY & CO., Toledo, Ohio.

MORTON HOSPITAL
REASONABLE
Our expert doctors and surgeons, excellent food, and quiet surroundings bring you real health.
1006 PINE STREET, SAN FRANCISCO, CALIF.

WRIGLEYS
After Every Meal
It's the longest-lasting confection you can buy—and it's a help to digestion and a cleanser for the mouth and teeth.
Wrigley's means benefit as well as pleasure.
Sealed in its Purity Package
WRIGLEYS' JUICY FRUIT CHEWING GUM
THE FLAVOR LASTS

Plaza Market
H. A. Stearns 61 N. Main

Pure Maple SYRUP
45c A CAN
3 cans for \$1.25
Cheaper and better than any other syrup

Rx For Complete Relief from Hay Fever
Stop every Hay Fever Symptom in 24 hours with new Federal prescription of Cleveland specialist that quickly neutralizes pollen poisoning throat system. Relief positively guaranteed to give full relief in 24 hours—no money back. Try it on this guarantee. Send 10c to 24 hour mail treatment to Clinical Laboratories Co., Cleveland. Regular size sold by all good druggists.

WRIGLEYS' JUICY FRUIT CHEWING GUM
THE FLAVOR LASTS

Plaza Market
H. A. Stearns 61 N. Main

WRIGLEYS' JUICY FRUIT CHEWING GUM
THE FLAVOR LASTS

Plaza Market
H. A. Stearns 61 N. Main

WRIGLEYS' JUICY FRUIT CHEWING GUM
THE FLAVOR LASTS

Plaza Market
H. A. Stearns 61 N. Main

LABOR GOVERNMENT HUGE SUCCESS IN ENGLISH POLITICS

LONDON, Aug. 29.—Labor has come to the end of its first milestone in British Government and can look back with some pride.

When the Labor Party took up the reins of Government there was a great cry sent up that "Labor is not fit to rule!" Now the first session of a Labor Parliament has ended, and the British Empire still stands. There have been no great catastrophes, and there are no present threats of revolution. On the face of things, to a disinterested onlooker, it seems that Labor has proven its fitness to rule.

"The Labor Government has finished its first session and its work must commend itself to the great mass of people who care for social well-being and national prosperity," Premier Ramsay MacDonald declared.

Foes Feared Test
This statement might be set down as mere political assertiveness and boastfulness were it not for the very obvious fact that none of the opposition parties have been sure enough of their power to test strength with the Government in a general election. When the session came to an end in the closing days of July and August there were numberless opportunities for both the Tories and the Liberals to bring on a general election, but they failed to grasp these opportunities. It seems probably, that they did not dare, for the very simple reason that they did not feel that the Labor Government was in a sufficiently weak position to be brought before the people of the country for trial. The chances are that these opposition seers sensed the truth that Labor's rule had been such that it might gain more strength if it were hauled into the court of a general election.

Labor in power has had some fine achievements.
Taxation has been reduced by \$150,000,000. Opponents of Labor explain that a similar reduction would have been made by any other party.

The Labor Government has succeeded where two previous governments failed—namely in bringing the reparations problem to a settlement.

Soviet Recognized
Labor has recognized Russia and entered into a treaty with the Soviet Government—an achievement which is questioned by the opposition, but which may prove its worth in coming months.

Housing conditions will be bettered when Labor's program is carried out, although the opposition again claims that Labor merely carried out proposals put forth by previous governments.

Three serious strikes have been settled by the Labor Government. Disarmament conferences to reduce land and air forces are on the program of the Government.

The unemployment situation is slightly better, at least, no worse, and trade has not suffered.
Labor has acted where previous governments merely proposed to act.

The outstanding fact in Labor's regime, however, is that critics of Labor have been utterly confounded, and those who six months ago made dire predictions of a Bolshevik England in red ruin, now blush when they read the speeches they made.

Autumn will find Labor back before Parliament in a position that promises to bring increasing strength.
Classified ads bring results.

Save the Surface
of your houses by using FULLER PAINTS
We have the painters to do the work.
J. O. RIGG

INSIST ON TANCEL VEGETABLE PILLS For Constipation

GOOD GAS ALWAYS FROM THE RED, WHITE & BLUE PUMP

These dealers with the red, white and blue pump and the Red Crown sign, have confidence in the gasoline they serve. It's a confidence based on the preference shown "Red Crown" by the motoring public—and by its power and mileage performances.

For example, in the last Los Angeles-Yosemite Economy Run, ordinary stock cars made from 18 miles to 29 miles per gallon of "Red Crown" over a strenuous 414 mile course. Performance! Economy! You'll always be glad if you use "Red Crown".

These dealers will serve you Red Crown Gasoline

Newton's Service Station, Talent, Oregon
Harrison Bros., Ashland, Oregon
Thos. Simpson, Ashland, Oregon
B. Wallsten, Ashland, Oregon
Hotel Garage Ashland, Oregon
O Service Station, Ashland, Oregon
A. D. Helm Service Station, Ashland, Oregon
Ira Tilley, Siskiyou, Oregon
Summit Ranch Siskiyou, Oregon
Crapsey's Service Station Green Springs Mountain

RED CROWN GASOLINE

STANDARD OF QUALITY

STANDARD OIL COMPANY (California)

TASTY
the milk with the fine rich flavor
It's Nestle's ALPINE MILK

INSIST ON TANCEL VEGETABLE PILLS For Constipation

SAVE THE SURFACE
of your houses by using FULLER PAINTS
We have the painters to do the work.
J. O. RIGG



GOOD GAS ALWAYS FROM THE RED, WHITE & BLUE PUMP

These dealers with the red, white and blue pump and the Red Crown sign, have confidence in the gasoline they serve. It's a confidence based on the preference shown "Red Crown" by the motoring public—and by its power and mileage performances.

For example, in the last Los Angeles-Yosemite Economy Run, ordinary stock cars made from 18 miles to 29 miles per gallon of "Red Crown" over a strenuous 414 mile course. Performance! Economy! You'll always be glad if you use "Red Crown".

These dealers will serve you Red Crown Gasoline

Newton's Service Station, Talent, Oregon
Harrison Bros., Ashland, Oregon
Thos. Simpson, Ashland, Oregon
B. Wallsten, Ashland, Oregon
Hotel Garage Ashland, Oregon
O Service Station, Ashland, Oregon
A. D. Helm Service Station, Ashland, Oregon
Ira Tilley, Siskiyou, Oregon
Summit Ranch Siskiyou, Oregon
Crapsey's Service Station Green Springs Mountain

RED CROWN GASOLINE

STANDARD OF QUALITY

STANDARD OIL COMPANY (California)

TASTY
the milk with the fine rich flavor
It's Nestle's ALPINE MILK

INSIST ON TANCEL VEGETABLE PILLS For Constipation

SAVE THE SURFACE
of your houses by using FULLER PAINTS
We have the painters to do the work.
J. O. RIGG



GOOD GAS ALWAYS FROM THE RED, WHITE & BLUE PUMP

These dealers with the red, white and blue pump and the Red Crown sign, have confidence in the gasoline they serve. It's a confidence based on the preference shown "Red Crown" by the motoring public—and by its power and mileage performances.

For example, in the last Los Angeles-Yosemite Economy Run, ordinary stock cars made from 18 miles to 29 miles per gallon of "Red Crown" over a strenuous 414 mile course. Performance! Economy! You'll always be glad if you use "Red Crown".

These dealers will serve you Red Crown Gasoline

Newton's Service Station, Talent, Oregon
Harrison Bros., Ashland, Oregon
Thos. Simpson, Ashland, Oregon
B. Wallsten, Ashland, Oregon
Hotel Garage Ashland, Oregon
O Service Station, Ashland, Oregon
A. D. Helm Service Station, Ashland, Oregon
Ira Tilley, Siskiyou, Oregon
Summit Ranch Siskiyou, Oregon
Crapsey's Service Station Green Springs Mountain

RED CROWN GASOLINE

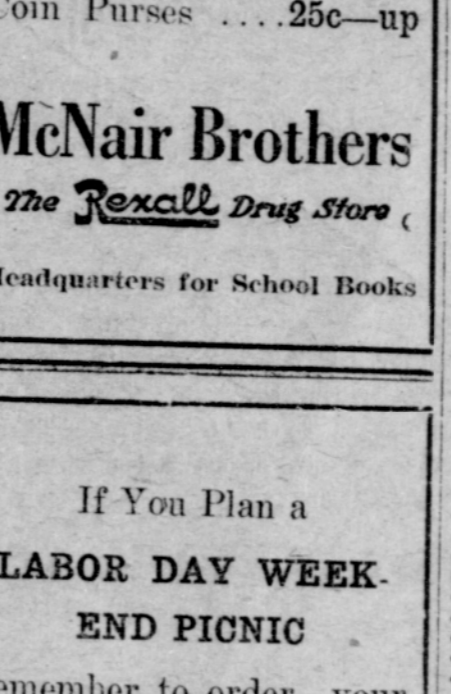
STANDARD OF QUALITY

STANDARD OIL COMPANY (California)

TASTY
the milk with the fine rich flavor
It's Nestle's ALPINE MILK

INSIST ON TANCEL VEGETABLE PILLS For Constipation

SAVE THE SURFACE
of your houses by using FULLER PAINTS
We have the painters to do the work.
J. O. RIGG



GOOD GAS ALWAYS FROM THE RED, WHITE & BLUE PUMP

These dealers with the red, white and blue pump and the Red Crown sign, have confidence in the gasoline they serve. It's a confidence based on the preference shown "Red Crown" by the motoring public—and by its power and mileage performances.

For example, in the last Los Angeles-Yosemite Economy Run, ordinary stock cars made from 18 miles to 29 miles per gallon of "Red Crown" over a strenuous 414 mile course. Performance! Economy! You'll always be glad if you use "Red Crown".

These dealers will serve you Red Crown Gasoline

Newton's Service Station, Talent, Oregon
Harrison Bros., Ashland, Oregon
Thos. Simpson, Ashland, Oregon
B. Wallsten, Ashland, Oregon
Hotel Garage Ashland, Oregon
O Service Station, Ashland, Oregon
A. D. Helm Service Station, Ashland, Oregon
Ira Tilley, Siskiyou, Oregon
Summit Ranch Siskiyou, Oregon
Crapsey's Service Station Green Springs Mountain

RED CROWN GASOLINE

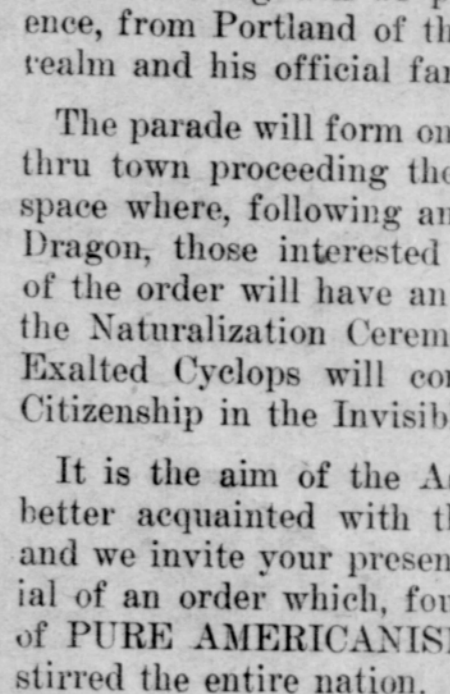
STANDARD OF QUALITY

STANDARD OIL COMPANY (California)

TASTY
the milk with the fine rich flavor
It's Nestle's ALPINE MILK

INSIST ON TANCEL VEGETABLE PILLS For Constipation

SAVE THE SURFACE
of your houses by using FULLER PAINTS
We have the painters to do the work.
J. O. RIGG



GOOD GAS ALWAYS FROM THE RED, WHITE & BLUE PUMP

These dealers with the red, white and blue pump and the Red Crown sign, have confidence in the gasoline they serve. It's a confidence based on the preference shown "Red Crown" by the motoring public—and by its power and mileage performances.

For example, in the last Los Angeles-Yosemite Economy Run, ordinary stock cars made from 18 miles to 29 miles per gallon of "Red Crown" over a strenuous 414 mile course. Performance! Economy! You'll always be glad if you use "Red Crown".

These dealers will serve you Red Crown Gasoline

Newton's Service Station, Talent, Oregon
Harrison Bros., Ashland, Oregon
Thos. Simpson, Ashland, Oregon
B. Wallsten, Ashland, Oregon
Hotel Garage Ashland, Oregon
O Service Station, Ashland, Oregon
A. D. Helm Service Station, Ashland, Oregon
Ira Tilley, Siskiyou, Oregon
Summit Ranch Siskiyou, Oregon
Crapsey's Service Station Green Springs Mountain

RED CROWN GASOLINE

STANDARD OF QUALITY

STANDARD OIL COMPANY (California)

TASTY
the milk with the fine rich flavor
It's Nestle's ALPINE MILK

CUTS-SORES
Cleanse thoroughly—then, without rubbing, apply—
VICKS VAPORUB
Over 17 Million Jars Used Yearly

Klan to Hold Huge Ceremonial Here
On the night of September Second, Ashland Klan No. 10, Realm of Oregon, will be host to a gathering here of Klansmen from all over the state.

The features of the evening will be a big Klan parade and the burning of a huge fiery cross that will illuminate the entire town.

The meeting will be punctuated by the presence, from Portland of the Grand Dragon of the realm and his official family.

The parade will form on Main street and march thru town proceeding thence, to a large open space where, following an address by the Grand Dragon, those interested in the inner workings of the order will have an opportunity to witness the Naturalization Ceremony of the Klan. The Exalted Cyclops will consider applications for Citizenship in the Invisible Empire at that time.

It is the aim of the Ashland Klan to become better acquainted with the people of our town and we invite your presence at a public ceremonial of an order which, founded on the principles of PURE AMERICANISM and COURAGE has stirred the entire nation.

See the Oregon State Fair SALEM Sept. 22-27

Southern Pacific
going away to sun-swept California

The charm of California's golden sunshine becomes increasingly alluring at this season. Enjoy the healthful outdoor life and the pleasures of the beach resorts through the winter months. Take advantage of Southern Pacific low fares and comfortable, convenient service. Go via the scenic Shasta route—four fast, comfortable and convenient trains daily—in each direction. For the "California" booklet and full railroad information, communicate with G. N. Kramer, Local Agent. Phone 14 or 43

7.14% —and WHAT ELSE?

Preferred Stock of The California Oregon Power Company offers ONLY a sound, high-yield investment for your idle funds or monthly savings.

It offers no sudden, speculative fortune. But it brings you, regularly every three months, the maximum reasonable dividend from a well-guarded investment.

DOUBLY GUARDED

Your investment in this security is safeguarded by a large direct equity (more than twice the value of the stock) in nine valuable power plants, in one more now being built, in 1550 miles of power lines, and in all of the Company's other properties.

7.14% from Copco Preferred Stock does mean doubly-guarded savings.

\$5 A MONTH makes you an investor

For information about our plan which enables you to buy your shares at \$5 per share per month (with interest allowed on all payments) telephone any member of our organization—or mail the coupon below.

THE CALIFORNIA OREGON POWER COMPANY
Offices: OREGON Roseburg Medford Grants Pass Klamath Falls CALIFORNIA Yreka Dunsmuir

THE CALIFORNIA OREGON POWER COMPANY MEDFORD, OREGON
Please send me full information about your 7% Preferred Stock and special partial payment plan.

Name _____ Address _____

Ask any member of our organization—or mail this coupon—today!