

ASHLAND DAILY TIDINGS

(Established in 1876)

Published Every Evening Except Sunday by THE ASHLAND PRINTING CO.

Bert R. Greer Editor
OFFICIAL CITY PAPER Telephone 39
Entered at the Ashland, Oregon, Postoffice as Second Class Mail Matter

Subscription Price, Delivered in City	
One Month	\$.65
Three Months	1.95
Six Months	2.75
One Year	7.50
By Mail and Rural Routes:	
One Month	\$.65
Three Months	1.95
Six Months	2.50
One Year	6.50

DISPLAY ADVERTISING RATES:	
single insertion, per inch	.30
Yearly Contracts:	
One insertion a week	\$.27 1/2
Two insertions a week	.25
Daily insertion	.20

Rates For Legal and Miscellaneous Advertising	
First insertion, per 3 point line	\$.10
Each subsequent insertion, 3 point line	.05
Card of Thanks	1.00
Obituaries, per line	.02 1/2

WHAT CONSTITUTES ADVERTISING
"All future events, where an admission charge is made or a collection taken is Advertising."
No discount will be allowed Religious or Benevolent orders.

DONATIONS

No donations to charities or otherwise will be made in advertising, or job printing—our contributions will be in cash.

NOVEMBER 30

NOT EVERY ONE THAT SAITH LORD, LORD:—Not every one that saith unto me, Lord, Lord, shall enter into the kingdom of heaven; but he that doeth the will of my father which is in heaven. —Matthew 7:21.

THE WINTER FAIR

The Winter Fair, December 5, 6, 7, and 8, is an institution or an event meriting the unqualified support of every resident of Ashland. Originating three years ago, beginning as an event of small proportions, and growing continually year by year, it has reached proportions that make it an important event in the commercial, domestic, and artistic life of Ashland and Jackson county.

Who can measure the bounds of the Winter Fair in future years, judging the future growth by the rapid increase in quality and proportions of the past? The Fair of 1922 made it apparent that larger quarters were required for the exhibit of 1923 and the spacious Chautauqua building was secured. Even that structure of unusually large dimensions may not be able to accommodate the increasing exhibits of another year.

Heretofore the responsibility, the multitude of details, the enormous amount of work connected with the staging of the Winter Fair have been left for a comparatively few. The responsibility and duties have become too great for a few men and women to shoulder and much of the success of the coming fair and the growth of the event in the future rests with the co-operation afforded by citizens in general. This is an opportune time for all to develop an interest in the event. Resolve to give the coming exhibition your best efforts and support and to let your enthusiasm and co-operation extend through the years to come.

The Winter Fair of future years will, however, be exactly what Ashland people make it. While its activities, advantages and opportunities are extended to all of Oregon in some of its departments, it is an institution, the growth and development of which rest directly upon the citizens of Ashland. It is our show to improve and expand as our personal efforts will permit. It is an event that conflicts in no way with any other exhibit or show, hence it has opportunities of vast development.

The Winter Fair in itself is rather a novel event. Comparatively few are held on the Pacific Coast. It offers possibilities as a valuable asset to Ashland, the bounds of which may extend beyond the most vivid imagination of its most consistent supporters.

THE OREGON COUNTRY IN BRIEF

For several weeks the United States National Bank at Portland has been running a series of advertisements under the above caption. During recent weeks an advertisement has been devoted daily to one of Oregon's counties. The fifteenth county to receive consideration at the hands of that well known financial institution is Jackson county, which appears as follows under the heading, "The Land Called Great."

Who hasn't heard of the Rogue River Valley, encompassing and surrounded by many and diversified natural resources—where mineral and timber wealth, rich agricultural and horticultural possibilities, a mild climate, fertile lands and scenic splendors all combine?

With the discovery of gold in 1851, Jackson County's history begins. From gold to grain, to fruits, diversified farming, dairying and stock-raising development has proceeded. Fifteen thousand acres now have bearing orchards, pears being the highly specialized fruit which brings undying fame to this section of the Oregon country. Peaches, apples and small fruits and berries of notable quality are also grown.

Jackson county has an area of 2836 square miles, 1,815,040 acres, about one-half the size of Connecticut state. Over 100,000 acres are under cultivation, with 700,000 susceptible of ultimate cultivation. Over 20 billion feet of yellow pine, sugar pine and fir occupy the great forest area of the country.

The rugged Siskiyou border on the south, the Umpqua divide on the north and the Cascades on the east. Deeply imbedded in the latter is Crater lake, whose western gateway lies through Jackson county.

Clean, beautiful, progressive cities have grown up by advent of a population which comes to play or embrace the opportunities.

Some men would rather talk about the next war than about peace.

While both are sure, the difference between death and taxes is that taxes keep right on coming.

France shows the first symptoms of getting over the idea that she can hold the rest of Europe in the hollow of her pocketbook.

PROGRAMS FEATURE OF WINTER FAIR

Committee Composed of Many Strong Men of the City.

TOMLINSON IS HEAD

Special Program Being Prepared for Each of the Four Nights.

In order that visitors, not only, but local people as well will feel well repaid for the price of admission to the Winter Fair excellent programs are being arranged for each evening. Realizing that much depends on the efforts exerted by the members of the program committee, a number of the strongest men in the city were appointed to that committee. They were selected because of their close acquaintance with Ashland talent. The committee consists of H. K. Tomlinson, president of the Kiwanis club; V. D. Miller, Grand High Fizz of the Lithians; Carl Loveland, band and orchestra leader; J. Q. Adams, Captain of the 484th Co. C. A. C., and H. G. Enders, Jr. The committee has enlisted the support of the Woman's Civic Club, which organization will be responsible for the program on the opening night, December 5.

The program of the second night will be arranged by Captain Adams and members of the 484th Co. C. A. C. The Ashland High School will provide the entertainment for the third night. The fourth and last night will be in charge of the Lithians, which organization will not only stage an excellent program but will inaugurate something new in carnival features, and will put over the liveliest closing night in the history of the Winter Fair.

Best Talent to Appear

Although it appears that some valuable time has been lost by the program committee the members are at present exerting every effort to provide programs that will reflect creditably on Ashland and southern Oregon. The committee is being ably assisted by the Civic Club and the High School, and gives assurance that the best of local talent has been secured to aid in the programs, and they desire to announce that each of the four programs will be of exceptional merit and each worth the price of a season ticket.

Season tickets, good for the entire week are being sold at the low price of 50 cents, while a single admission will cost 25 cents.

FOURTH GRADERS TO EXHIBIT RAG DOLLS

A Display, Rife in Imagination and Colors, Will Feature Winter Fair.

As a feature of the winter fair, scheduled for December 5, 6, 7, and 8 the fourth grades of the city schools have been appointed to make rag dolls. Teachers have worked faithfully with their students and fervent fourth-grade imagination has taken generous proportions and fantastic designs in their riot of creations.

No style of dandy life has been overlooked. Every member of the family is to be on dress parade for winter-fair goers. Probably best conceived with be the generous mother dandy with her wide bandana, tidy pinafore, rolling eyes and frizzly hair.

Sambo, from the youngest, still in his overall period, to the Beau Brummel, proud with the natty red neck tie, swanky cut-away coat and debonaire button hole bouquet, will be seen. Neat school girls loosening their sunbonnets and making eyes at country swains, "Patience and Prudence," and elderly grandfathers, will link arms and win for some school child the coveted first prize.

CHAMBER GIVES EUGENE POPULATION OF 14,883

EUGENE, Nov. 20.—The total population of Eugene within the city limits is 14,883 and including the immediate suburbs it is 16,078, according to a census taken under the auspices of the chamber of commerce. Captains named for the 21 precincts, each had a team of workers.

The 1920 federal census gave the city a population of approximately 10,500.

NEURALGIA
of headache—rub the forehead
—moist and inhale the vapors

VICKS
VAPORUB
Over 17 Million Jars Used Yearly

Rochester Doctor Achieves Remarkable Success With New Prescription for Piles

Rochester, N. Y. For years it has been known that many so-called remedies for the relief or cure of Hemorrhoids or Piles were simply palliatives and gave only temporary relief while surgical operations often adopted as a last resort never removed the cause but simply the formation.

It has remained for a well known doctor of this city to find the real remedy. Years of patient, painstaking effort on his part has resulted in a prescription that will actually heal piles and absorb them never to return.

No man or woman need suffer another hour from any pain, soreness or distress arising from Hemorrhoids or Piles now that this wonderful prescription known as MOAVA SUPPOSITORIES can be obtained for a moderate price at any first-class drug store on the money back is dissatisfied plan.

You'll be amazed to see how quickly it acts. Blessed relief often comes in an hour; even in cases of long standing with profuse bleeding, really wonderful results have been accomplished.

Remember the name, MOAVA SUPPOSITORIES, and be sure to follow the simple directions that come in each box. East Side Pharmacy will supply you. No. 7

The American men and women must guard constantly against kidney trouble, because we often eat too much rich food. Our blood is filled with acids which the kidneys strive to filter out; they weaken from overwork, become sluggish, the eliminative tissues

sluggish, the eliminative tissues clog and the result is kidney trouble, bladder weakness and a general decline in health.

When your kidneys feel like lumps of lead; your back hurts or the urine is cloudy, full of sediment, or you are obliged to seek relief two or three times during the night; if you suffer with sick headache, or dizzy, nervous spells, acid stomach, or if you have rheumatism when the weather is bad, begin drinking lots of good soft water and get from your pharmacist about four ounces of Jad Salts. Take a tablespoonful in a glass of water before breakfast for a few days and your kidneys may then act fine.

DRUGS EXCITE THE KIDNEYS DRINK WATER

Take Salts at First Sign of Bladder Irritation or Backache.

The American men and women must guard constantly against kidney trouble, because we often eat too much rich food. Our blood is filled with acids which the kidneys strive to filter out; they weaken from overwork, become sluggish, the eliminative tissues

clog and the result is kidney trouble, bladder weakness and a general decline in health.

When your kidneys feel like lumps of lead; your back hurts or the urine is cloudy, full of sediment, or you are obliged to seek relief two or three times during the night; if you suffer with sick headache, or dizzy, nervous spells, acid stomach, or if you have rheumatism when the weather is bad, begin drinking lots of good soft water and get from your pharmacist about four ounces of Jad Salts. Take a tablespoonful in a glass of water before breakfast for a few days and your kidneys may then act fine.

This famous salts is made from the acid of grapes and lemon juice, combined with lithia, and has been used for years to help flush and stimulate clogged kidneys, to neutralize the acids in the system so they no longer are a source of irritation, thus often relieving bladder disorders.

Jad Salts is inexpensive; can not injure, makes a delightful effervescent lithia-water drink and belongs in every home, because nobody can make a mistake by having a good kidney flushing any time. By all means have your physician examine your kidneys at least twice a year.

Packers and Shippers of

Ashland's Famous Foothill Products

A Service Organization owned by and operated for the benefit of the producers of Ashland, Talent and Bellevue Districts—

Supplying Weekly Bulletins and making distribution of Ashland Famous Foothill Products to over sixty adjacent Cities and Trading Points in addition to distant shipments—

Packers and shippers in their respective seasons of Green Vegetables, Berries, Cherries, Peaches, Plums, Apricots, Grapes, Pears, Apples and all kinds of growers' produce, including Fresh and Storage Eggs—

Also carries a full line of Growers Supplies, including Flour, Seed, Feed, Fertilizers, Insecticides, Spray Material, Box Shook, and a general line of Orchard Supplies; also a full line of Poultry, Dairy and Stock Feeds—

We most earnestly solicit the support and co-operation of the General Public in our efforts to stabilize markets and toward a proper standardization of grades, package and practices of Ashland's Famous Foothill Products—

We invite memberships from all Producers—

ASHLAND FRUIT & PRODUCE ASSOCIATION.

Keep Your Boy at Home

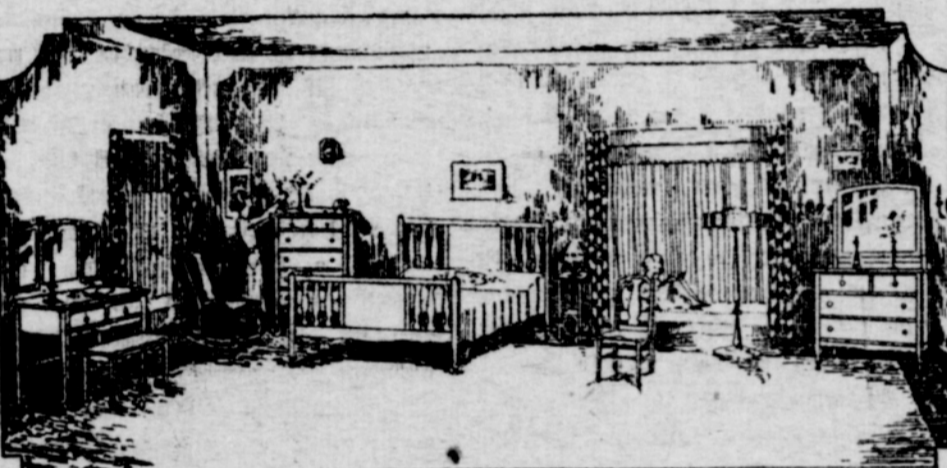


By making the farm Home evenings attractive and pleasant.

See our booth at Winter Fair and hear concerts or call at

Southern Radio Supply

Beaver Block Ashland
Opposite Union Oil Station



As CHRISTMAS time approaches think of FURNITURE, and when you think of FURNITURE, think of J. P. DODGE & SONS, RELIABLE HOUSE FURNISHERS, where you always get the BEST in PRICE, QUALITY and SERVICE. Our Bed Room and Dining stock is very complete, in fact all lines are full.

Now is the time to buy Cotton Mattresses; the price of Cotton is advancing; we are selling at the old price; our stock is complete and prices moderate. When you want RUGS or LINOLEUM don't miss seeing our line.

J. P. DODGE & SONS

Ashland, Oregon

Where to get your Electrical Gifts

Lamps, Toasters, Complete Table and Lunch Electrical Equipment, Curling Irons, Radio Sets and Supplies, Westinghouse Electrical Stoves and Eden Washing Machines

Willard Threaded Rubber Batteries and Common Wood Batteries by Willard

JORDAN ELECTRIC SHOP

State Bank of Ashland