

Ashland Tidings
 Established 1876
 Published Every Evening Except Sunday
THE ASHLAND PRINTING CO.
 OFFICIAL CITY AND COUNTY PAPER
 TELEPHONE 39
 E. J. BARRETT, Editor

Entered at the Ashland, Oregon, Postoffice as Second-class Mail Matter.

Subscription Price Delivered in City:
 One month \$.65
 Three months 1.95
 Six months 3.75
 One year 7.50
 Mail and Rural Routes
 One month \$.65
 Three months 1.95
 Six months 3.50
 One year 6.54

ADVERTISING RATES
 Display Advertising
 Single insertion, each inch 30c
YEARLY CONTRACTS
 Display Advertising
 One time a week 27½c
 Two times a week 25 c
 Every other day 20 c

Local Readers
 Each line, each time 10c
 To run every other day for one month, each line, each time 7c
 To run every issue for one month or more, each line, each time 5c

Classified Column
 One cent the word each time.
 To run every issue for one month or more, ½c the word each time.

Legal Rate
 First time, per 8-point line 10c
 Each subsequent time, per 8-point line 5c
 Card of thanks \$1.00
 Obituaries, the line 2½c

Fraternal Orders and Societies
 Advertising for fraternal orders or societies charging a regular initiation fee and dues, no discount. Religious and benevolent orders will be charged the regular rate for all advertising when an admission or other charge is made.

What Constitutes Advertising
 In order to allay a misunderstanding among some as to what constitutes news and what advertising, we print this very simple rule, which is used by newspapers to differentiate between them: "ALL future events, where an admission charge is made or a collection is taken IS ADVERTISING." This applies to organizations and societies of every kind as well as to individuals.

All reports of such activities after they have occurred is news.
 All coming social or organization meetings of societies where no money contribution is solicited, initiation charged, or collection taken IS NEWS.

SOLOMONIDES

LAMP THE VAMP
 Curses on thee, little Vamp,
 With thy fascinating "lamp,"
 With thy little sawed off skirt,
 And abbreviated shirt;
 With thine arms and shoulders bare,
 And thy limbs, at which I stare,
 With thy form so full of life,
 I almost forget my wife.

The workman who is always watching the clock, is very apt to always remain "one of the hands."

The woman scorned and the man "corned," have one thing in common—they are both mad clean through.

London was never strong in appreciation of good scenery. Probably the reason it puts the taboo on bobbed hair.

The most unfortunate aspect of the prospect of a general walkout of the railroad men is the probability of making us all walk.

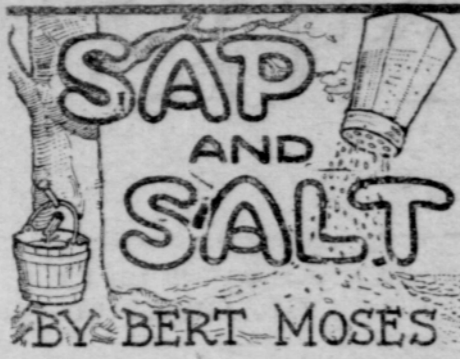
Some of the brainiest men of our times seem to think life must be lived through the head, and the heart kept in cold storage.

Not much chance of long skirts ever being worn again in Ashland. Most of the girls, and the women, too, can point to two good reasons why they should not be.

The first day of the deer season brought its usual quota of casualties, one man making a record by bringing down two humans. Getting to be so there is likely to be a revival of the industry of manufacturing shirts of mail.

Ed Moore is certainly getting more than his share of hard luck. Yesterday morning he had a comfortable home, and today he and his wife are bereft of everything they possess, except the clothes they stand in, and are camping out on a vacant lot. The fire which laid their little home in ashes was not sufficient to burn up their optimism, however. This morning they were about town, with cheery, instead of downcast countenances, looking at the world, not through a glass darkly, but with roseate vision undimmed by their misfortune.

I. T. Sparks, the district freight and passenger agent of the Espree, was in town the other day and while here received a message from Vice-President E. O. McCormick, asking



Most of the big men come from small towns.

One of the troubles that can't be laughed away is toothache.

The telephone is useful in calling people up so you can call them down.

Kin folks that we are ashamed of are just as apt to be ashamed of us.

If you can't get business without cutting prices, you are a poor business man.

The world is full of men who know how to run the business of others, but fall down in running their own.

HEZ HECK SAYS:
 "If you don't know when you're licked, you never are."

that he join him at San Francisco. Mr. McCormick claims the right of discovery of Hell Gate, the picturesque wonder just out of Grants Pass, and as Mr. Sparks was on his way thither, he wired the following to his chief: "Can't come. Am on the way to Hell Gate to make a survey of Devil's Backbone, seeking an outlet to Hell's Half Acre, with a view of reaching Satan's Playground."

UPSETTING PROPERTY RIGHTS
 (Dunsmuir News)

The argument set up by the Southern Pacific in its brief filed with the United States supreme court seems to go to the heart of the Central Pacific controversy.

The Southern Pacific was built by the same crowd that had previously built the Central Pacific. The two had one brain and one soul—to fly in the face of the proverb—and one fist holding both their strong boxes. If the owners of both sold their control of the Central Pacific—and did it legally—why could not the same crowd later regain that control—and do it legally? The separation of the two roads was never anything but a legal and stock market fiction.

The lease of the Central Pacific lines to the Southern Pacific, by which Huntington, Stanford, Crocker, et al., replaced their former stock control, was entered into in 1885. It was unchallenged, though there were conceivable reasons why it would have been attacked if the English stockholders of the Central Pacific could have found a legal opening.

The Sherman anti-trust law had not then been born. Can that law, subsequently created, go back and abrogate a contract legally made long before? The constitution says something very explicitly denying the power of congress to make any law affecting the validity of a contract.

If laws can be passed and enforced which reach back before the passage of the law and set aside valid contracts and leases entered into in good faith, our whole structure of contractual and property rights has been destroyed.

Since the constitution was adopted, we have been taught this could not be done. If it can be effective in the case of the Southern Pacific, it can be applied to other railroads or other businesses.

WILL BORE FOR OIL
 NEAR JACKSONVILLE

(Jacksonville Post)
 It will be of interest to the people of this part of the county to learn that preparations are being made to bore for oil at several different places near Jacksonville.

Some of the leading oil experts of the country—who have had experience in the oil fields of Texas, Oklahoma and southern California—have been quietly investigating this western side of the Rogue river valley, and they claim that the prospects for oil here are the best they have found anywhere in the United States not yet tested or developed. If oil is found here—and the promoters feel sure it will be—Rogue river valley, especially the west side of it, will experience a boom that will be heard around the world.

And who knows—but what "Old Jacksonville" will again take her rightful place as the metropolis of southern Oregon.

Salem—Carload of 56,000 pounds of dried loganberries is shipped.

COPCO SELLING NEW STOCK
ISSUE ON INSTALLMENTS

The California Oregon Power company has just announced an offering of its 7 per cent preferred capital stock to its consumers and the public.

This stock will be offered at a price of \$92 per share, and as the dividend rate is 7 per cent per annum based on par, the stock thus sold will return about 7.6 per cent to the purchaser.

Payment for this stock may be made in cash or in installments of \$5 per share down, and \$5 per share per month, with the privilege of anticipating any payments, and interest at 6 per cent will be paid by the company on the amounts paid in, until complete payment for the stock has been made.

It has been decided to sell this stock through the sales effort of the members of the organization, who have indicated their confidence in the company by subscribing fully for the issue of stock recently made, practically 100 per cent of the organization now being stockholders of the company.

MORE RAIL GIANTS ARRIVE
TO SERVE WESTERN R. R.

Moving in two special trains, 12 new "2-10-2" type locomotives, valued at nearly a million dollars, and consigned to the Southern Pacific company for use on its Pacific System lines, have just reached the Pacific coast via El Paso, Texas.

These huge engines, the second consignment of an order of 50 placed by the Southern Pacific company with the Baldwin Locomotive Works, are to be put into service on the Southern Pacific lines across the Tehachapi and Siskiyou mountains. They are equipped with the latest fuel conservation and auxiliary power devices.

Evidence of the Southern Pacific company's faith in the Pacific coast is shown by the fact that the order for these locomotives was placed with the manufacturers in October, 1921, at a time when business conditions were unstable and the future less promising.

SPEEDWAY AT FAIR GROUNDS
WILL BE A CLASSY AFFAIR

Work on the speedway at the Jackson county fair grounds has been resumed, and this important unit in the fair ground equipment will be well taken care of in preparation for the races during the exposition.

The track measures one mile and an eighth, and has banked turns and in the opinion of competent engineers a speed of 80 to 90 miles an hour may be attained upon it.

According to George Gates and Seeley Hall, who will have charge of the speed events there will be some lively competition on the track during the fair, the program being designed for fast, snappy sprint races, rather than long drawn out endurance tests.

STAR CAST IN "FOREVER"
AT THE VINING THEATRE

One of the most elaborate and thrilling motion pictures produced in many months is "Forever," a George Fitzmaurice production for Paramount, starring Elsie Ferguson and Wallace Reid, which will be the feature de luxe at the Vining theatre for three days beginning today.

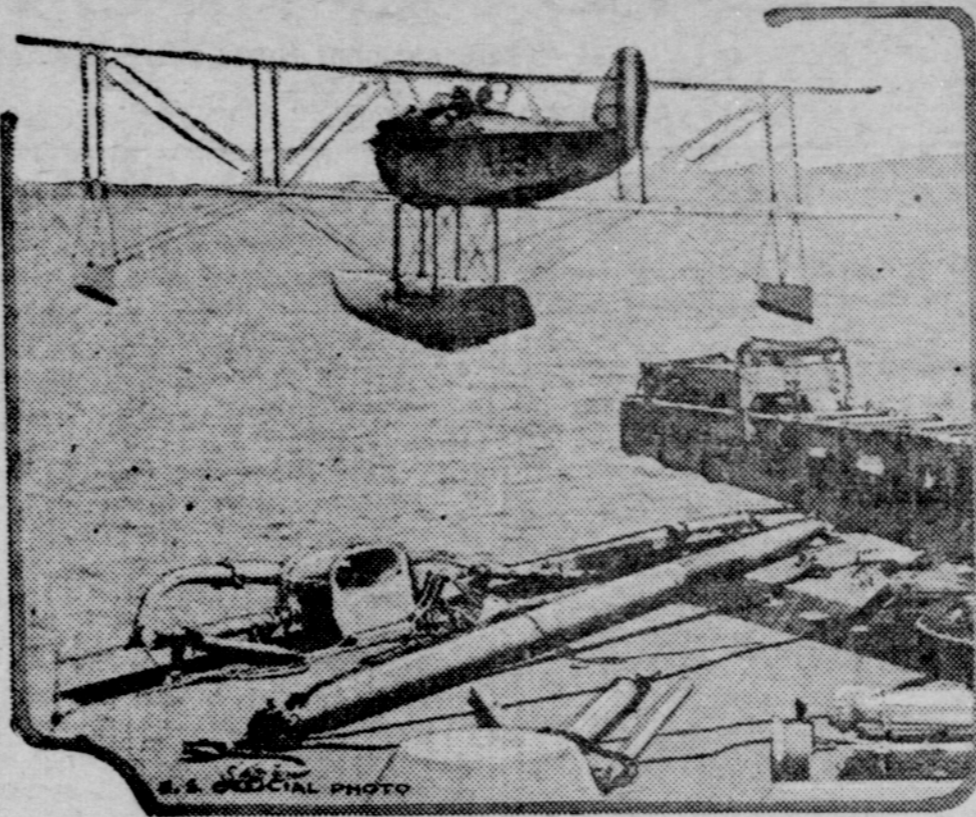
Headed by the stars named, the cast in this photoplay is the most imposing ever gathered for a Paramount picture with the possible exception of "The Affairs of Anatol." Elliott Dexter, Montagu Love, George Fawcett and Paul McAllister play the principal supporting male roles. The two feminine parts, next in importance to the "Duchess of Towers," which is Miss Ferguson's role, are played by Barbara Dean and Dolores Cassinelli.

KLAMATH FLOWER SHOW
WAS A NOTABLE SUCCESS

KLAMATH FALLS, Aug. 21.—Over 1000 visitors attended Klamath Fall's second annual flower show last week, and the public-spirited women who devoted their days to making it a success feel fully repaid for all their work. All other social activities were neglected by society's most active women in favor of the show. During the two days the show was in progress visitors were registered at the door by Mrs. T. C. Campbell and were served punch at a table presided over by Mrs. George Watt and daughter Geraldine. In the evening of the first day Miss Marjorie Delzell, Maybelle Leavitt, Geraldine Watt, Margaret Worden and Eleanore Torrey met the Portland visitors at the door and presented each one of them with a Shasta daisy.

Roseburg-Wilbur pavement completed.

Plane Launched by Catapult



Further tests of the catapult on the U. S. S. Maryland were conducted at Hampton Roads, Va., in the presence of Admiral Jones, commander of the U. S. Atlantic fleet, and Admiral Moffett, chief of the bureau of aeronautics, who says: "The catapult is no longer in the experimental stage. It is as practical and workable as is the torpedo tube used for launching torpedoes from the deck of a destroyer. Furthermore its development by the navy is a boon to aeronautical activities in the commercial field. The day is not far distant when commercial planes will be shot into the air from the deck of fast mail ships when they are still many miles at sea."

ASHLAND PEOPLE SPEND DAY AT VAN DYKE CLIFFS
 Yockey as guests, made the trip to Van Dyke cliffs Sunday. This is one of the many picturesque points near Ashland. The cliffs are visible from

many parts of the city and give somewhat the appearance of huge fortresses from a distance, the closer view being rugged and very interesting.

The party ate their lunch on a little stream, shaded with willows, with pure spring water gushing out of close-by rocks.

While the road is a good mountain thoroughfare, there are some rather rough and steep places, but with plenty of oil, gas, power and patience, one is paid for the journey by the wonderful view spread before them.

VAIN SEARCH FOR MAN
LOST FROM MOTOR BOAT

OYSTER BAY, N. Y., Aug. 22.—Four hydroplanes and 40 other craft of various types returned tonight from a vain all-day search for the body of Donald M. Phipps, 23, grad-

uate of Yale, and son of A. J. Phipps, millionaire lumber merchant of Florence Park, near here.

Young Phipps was swept by a high wave from the bow of a speed motorboat into Long Island sound, late yesterday and drowned. He was on a boat driven by his friend, William Lyons, of Easthampton. The victim's mother is prostrated by his death.

CANS FOR CANNING
JARS FOR JARRING
Provost Bros.



The best flour that money can buy



NOTE—The Red Top tin contains Velvet that has recently been delivered from the factory. It is in fresh condition—cool and smooth in a pipe.



Each tin of Velvet TOBACCO with the RED TOP

contains freshly made tobacco. Just right for your pipe.

And the mild smoothness you enjoy is the result of Velvet's two long year's ageing in wooden hogsheads. Patient ageing in Nature's way—the right way of removing raw harshness and bite.

You'll say that Velvet is cool, smooth and "sweet as a nut" in your pipe.

LEIGHT & MYERS TOBACCO CO.

Buy Velvet in the TIN with the RED TOP