

Local and Personal

Visitor from Nebraska—

Mrs. Anna Paulson, of Chappell, Neb., is visiting with Mr. and Mrs. Cyger, of east of the city. Mrs. Paulson is very much impressed with Oregon and with Ashland in particular.

Let us contract your painting Carson-Fowler Lumber Co. 286-10

You'll marvel in our array of advance styles as well as the prices we are asking. Paulserud's. 286tf

Orres cleans clothes. Phone 64. 288tf

It will pay you to let us figure on your next job of painting. Carson-Fowler Lumber Co. 286-2

Dance, Jackson Hot Springs, Wednesday evening, August 9. Talent Community Club. Tickets, \$1 plus 10 cents war tax. 285-sat-tu-w

Do you want a beautiful statue for your home? See Elhart's. 288-1

Cliff Payne makes folding screens.

French dry and steam cleaning, satisfaction guaranteed, at Orres Tailor Shop. Phone 64. we call. 288-3*

Detrick sells butter for less.

Locksmith. Fixit Shop. 282tf

Special Sunday dinner at the Summit Ranch. We are prepared to serve larger crowds in our new building, so come up where it is cool. Summit Ranch, Siskiyou, Ore. 288-2*

Ladies' suits tailored to measure at Orres tailor shop. 288-3*

Have you read the Elhart stationery offer? 288-1 465.

"YOUNG PARTY" HELD AT LEAVETT HOME

A delightful affair was the Ladies Foreign Missionary society social, held at the home of Mrs. H. H. Leavett, 440 Chestnut street, Tuesday afternoon, when a donation party for Miss Mary Young, who was formerly one of Ashland's popular young ladies, but at present is a missionary in Corea. Some one mentioned the fact that it was a "young party," which was very feelingly carried out during the program of the afternoon.

Ms. Minta Werren sang, "Out Where the West Begins," and Mrs. Fuller assumed the role of teacher, and drilled those present in singing "Hear the quarters drop in the pot for Mary," and the pupils, after having committed the words, then marched around the table singing as they dropped their quarters in the jar. The proceeds amounted to about \$12.

The entertainment of the afternoon consisted of games, which were entertaining and instructive. Rev. C. A. Edwards gave a talk on Corea. Elegant refreshments of ice cream and cake were served by the hostess, assisted by Misses Alice and Rose Leavett.

TO MAKE TOUR OF ORCHARDS IN COUNTY AUGUST 15TH

A fruit tour of Jackson county will be held Tuesday, August 15th, according to an announcement by C. C. Cate, county agent. Prof. C. L. Long, of O. A. C., will be here and aid Mr. Cate in explaining the methods and conditions found in local orchards.

A number of orchardists from other sections of the state are expected to take part in the tour, and see what can be learned from the Jackson county trip.

Expert piano tuning. Carl Loveland, studio at 135 E. Main. Phone 286tf

WATER IN CITY MAINS RUNS LOW RESULT DRY SPELL

Much comment has been heard during the past ten days in regard to the water in the city mains, which has been white and apparently foamy. Some citizens have ventured the opinion that this whiteness and foam was the result of putting chloride in the water to purify it, while others have advanced various other opinions.

Water Superintendent Hosler, in a statement today, explained that the whiteness and foam was caused by air getting into the mains at the intake. In explaining the matter, he stated that the main which feeds the upper part of the city, starts at the small pond at the power house, which is only about eight feet deep, and at this season of the year, the flow of the creek is not sufficient to keep the pond filled during irrigation hours, thereby allowing air to get into the main along with the water. Despite the fact that there are a number of air valves along the system, a great deal of air gets by them and passes into the small distributing pipes with the water.

When asked if this air is measured through the meters, Mr. Hosler said that there was not enough air to amount to anything, although if a faucet was allowed to remain open beyond a meter, and the pipe was filled with air instead of water, the meter would measure the air the same as if it were water.

When asked why the air was in the water only when the upper part of the city was irrigating, he replied that the lower part of the city gets nearly all of its water from the lower intake, where there is a large dam, and no air is taken into the mains at that place.

See the big values in the new Fall woolens, priced special at \$27.50 and \$30.00, at Orres' Tailor Shop. 288-3*

Charles S. Mitchell, formerly of Chicago and Portland, announces his great piano course—the "Mitchell Piano Instruction." Be sure to enroll soon. Phone. 223-L. 287-1

LLOYD GEORGE APPROVES ALLIED CONTROL OF RUHR

PARIS, Aug. 9.—Lloyd George has agreed to allied control of the Ruhr district of Germany, according to an unconfirmed London dispatch.

Have you seen the Elhart windows? 288-1

TOO LATE TO CLASSIFY

FOR SALE—Army tent 16x16, full six foot door, good condition. 90 Seventh St. 288-2*

FOR SALE—Furniture of an eight room house: Three dressers, three library tables, three breakfast tables, oak sectional bookcase, beds and couches, davenport, eight rockers, iceless refrigerator, gas, oil and heating stoves, and many other things. 614 Boulevard. Phone 348-L. Can be seen any day but Saturday. 288-5

LOST—Black bird dog about six months old. Answers to the name of "Tuffie." \$10 reward for return to Mrs. Songer, 45 Helman St. 288-3*

STRAYED OR STOLEN — Small black sheep. Notify George Sullivan, R. F. D. 1, Talent, Oregon. 288-2*

FOR SALE—Young pigs. J. T. Sawyer, Talent. Phone 12F3. 288-3

VINING THE THEATER BEAUTIFUL Norma Talmadge

"Smilin' Through"

As Moonycen, Girl of Yesterday, as Kathleen, Girl of Today

In romance and tragedy; in drama; in sweetest love—"Come Smilin' Through the Gates of Gladness."

SPECIAL Dorothy DeAnnis Poill

of the U. of O. Glee Club will sing the song

"SMILIN' THROUGH"

"LOOSE CHANGE" is the comedy

Admission, 10 and 50c, incl tax

Effective . . . Diplomatic
ASHLAND REALTY CO.
Opposite City Hall
Business Chances
Insurance Real Estate

FIRST CALL FOR FALL GOODS

Sixty of the Best Value Coats for Misses and Women, that we have had for many a season. The range of materials is large, from Tweeds to Plush, and the variety of style almost as great as the number of coats. The price range is from

\$19.75 to \$119.00

Also First Showing of New Suits for Fall

Suits and Coats are already being selected, and those preparing for college and all who wish to select before the stock is picked over, should come in soon.

EARLY BUYING OF FALL GARMENTS IS URGED TO KEEP INDUSTRY MOVING —AND THEN THERE IS THE ADVANTAGE OF GETTING THE ONE YOU WANT INSTEAD OF SEEING IT WORN BY SOMEONE ELSE.

IF YOU HAVE ESTABLISHED A GOOD CREDIT, IT IS NOT NECESSARY THAT YOU PAY IN FULL FOR YOUR GARMENT NOW — JUST ENOUGH TO BIND THE BARGAIN.

We particularly recommend Sterling Garments, for we know they will give you excellent service, but we also show other lines of good, popular priced garments.

FOR FALL SEWING

—A splendid quality French Serge, 40 inches wide, at, per yard. \$1.45
—Wool Crepe, popular fall dress material, 40 in. width, per yard. . . . \$2.50
—And all the staple Serges, Tricotines, and other dress suiting and coating materials.



The Best Place to Buy
WOMEN'S WEAR AND DRYGOODS

NO LET UP

—On the disposal of all summer wash fabrics and summer garments, as long as some price will move what is left.
—Come in and see if you cannot finish out the summer in something new at little cost.

Cherro Poultry Feeds

Give the best results because every sack is uniform and made from the choicest grains, and the by-products thoroughly mixed from formulas of correct balanced rations.

Carried by Most Feed Stores

Mid-Summer Reductions SPECIAL OFFERINGS for THURSDAY

MID-SUMMER REUCTIONS IN SILK
98c Yard \$1.48 Yard

—36 inches wide, Silk Poplin and Raja Silks in several good colors, for summer and early fall wear. This special offering for Thursday only.

—36 inches wide, extra good quality Silk Taffeta in black only. Buy your black silk dress now. This quality sold regularly at \$2.25 a yard.

\$1.98 Colored Pongee Silk, now	\$1.69	\$4.00 Canton Crepe, now	\$3.48
\$1.75 Crepe de Chine, now	1.59	\$4.39 Fancy Sport Skirting, now	3.98
\$1.98 Tub Silk Shirting, now	1.69	\$3.48 Fancy Baronette Satin, white	2.48
\$1.98 Silk Messaline, now	1.69	\$3.48 Crepd Meteor in colors, now	2.98

YOU CAN SAVE MONEY NOW
All Summer Dresses Reduced
All Childrens Dresses and Play Suits Reduced
All Muslin Undergarments Reduced
All Wash Goods Greatly Reduced

SALE OF REMNANTS

Odds and Ends All Must Go in This Big Mid-Summer Sale

Royal Worcester and Bon Ton Corsets
Holeproof and Burlington Hosiery

E. R. Isaac & Co.
The Quality Store

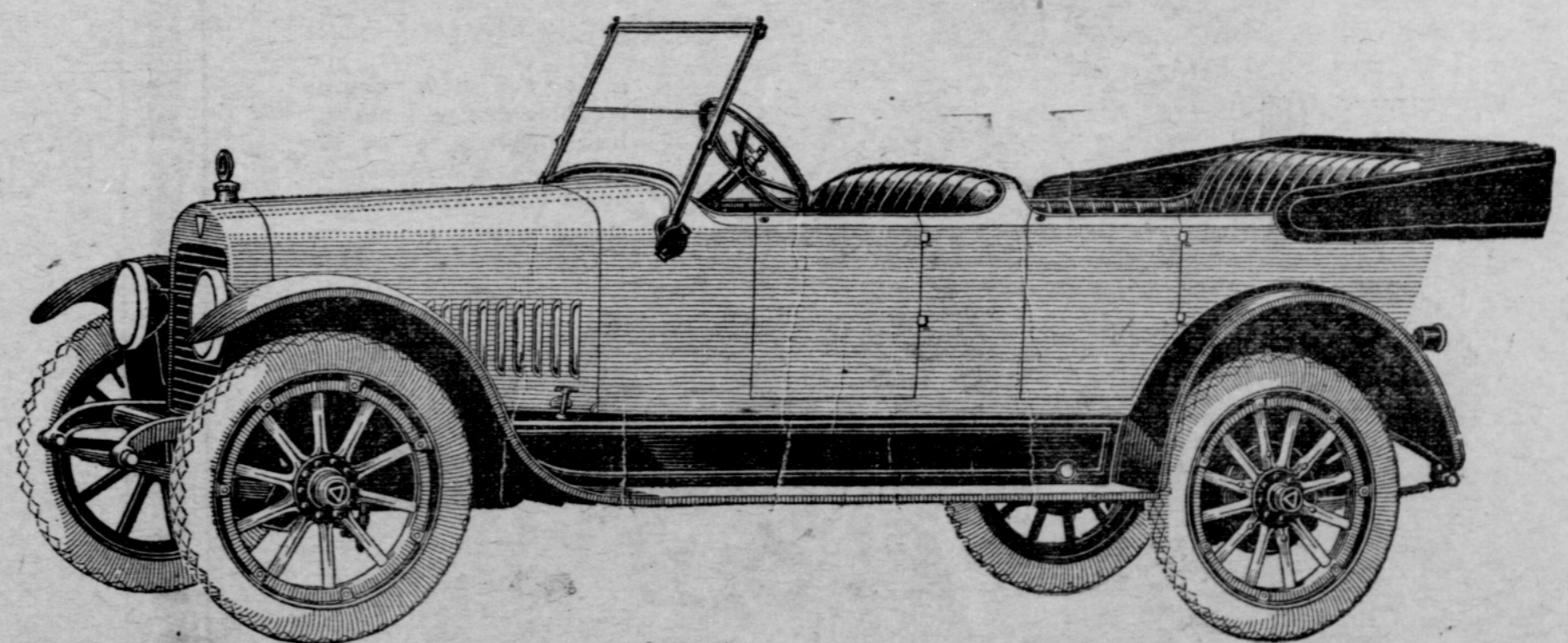
Colonial Drapery Fabrics
Wearwell Sheeting
Butterick Patterns
Wm. Anderson Gingham

HAVE YOUR HEMSTITCHING AND PICOTING DONE HERE
THE STORE WHERE YOUR PATRONAGE IS APPRECIATED

SEE THE NEW

HUDSON SUPER-SIX

With a New Motor of 72% More Power and 17 Miles on a Gallon of Gas



SEE IT AND RIDE IN IT

CLASS A GARAGE

