

Ashland Tidings

Established 1876. Published Every Evening Except Sunday. THE ASHLAND PRINTING CO. OFFICIAL CITY AND COUNTY PAPER TELEPHONE 39

E. J. BARRETT, Editor

Entered at the Ashland, Oregon, Postoffice as Second-class Mail Matter.

Subscription Price Delivered in City: One month \$.65 Three months 1.95 Six months 3.75 One year 7.50

MAIL AND RURAL ROUTES: One month \$.65 Three months 1.95 Six months 3.50 One year 6.50

ADVERTISING RATES: Display Advertising Single Insertion, each inch .30c YEARLY CONTRACTS Display Advertising One time a week .27 1/2c Two times a week .25c Every other day .20c

Local Readers: Each line, each time .10c To run every other day for one month, each line, each time .7c To run every issue for one month of more, each line, each time .5c

Legal Rate: First time, per 8-pc mt line .10c Each subsequent time, per 8-point line .10c Card of thanks \$1.00 Obituaries, the line 2 1/2c

What Constitutes Advertising: In order to allay a misunderstanding among some as to what constitutes news and what advertising, we print this very simple rule, which is used by newspapers to differentiate between them.

REGULATION OF INDUSTRY: Driven to public action by the coal strike about two years ago, the state of Kansas created a court of industrial relations. This court was empowered to arbitrate all labor disputes in essential industries—food clothing, fuel and transportation.

Standing of the Clubs: PACIFIC COAST LEAGUE Club— W. L. Per. San Francisco 74 46 .617 Vernon 68 50 .576 Los Angeles 66 55 .546 Salt Lake 59 59 .500 Oakland 57 63 .475 Seattle 54 65 .454 Portland 50 69 .420 Sacramento 49 70 .412

Standing of the Clubs: AMERICAN LEAGUE Club— W. L. Per. St. Louis 57 41 .582 New York 57 44 .564 Chicago 53 46 .535 Detroit 53 47 .530 Cleveland 52 50 .510 Washington 45 52 .464 Philadelphia 39 56 .411 Boston 39 59 .398

Standing of the Clubs: NATIONAL LEAGUE Club— W. L. Per. New York 58 38 .604 St. Louis 60 41 .594 Chicago 53 45 .541 Cincinnati 53 47 .505 Pittsburgh 48 47 .505 Brooklyn 47 49 .490 Philadelphia 35 57 .380 Boston 32 62 .341

Standing of the Clubs: GOLD HILL AND MEDFORD: Tonight at Gold Hill, Joe Gorman of Portland, one-time light and featherweight champion of the Pacific coast, will meet that fast little corner, Johnny Carlson of Gold Hill, in an eight-round go.

Standing of the Clubs: GOOD BOXING BOUTS AT GOLD HILL AND MEDFORD: Tonight at Gold Hill, Joe Gorman of Portland, one-time light and featherweight champion of the Pacific coast, will meet that fast little corner, Johnny Carlson of Gold Hill, in an eight-round go.

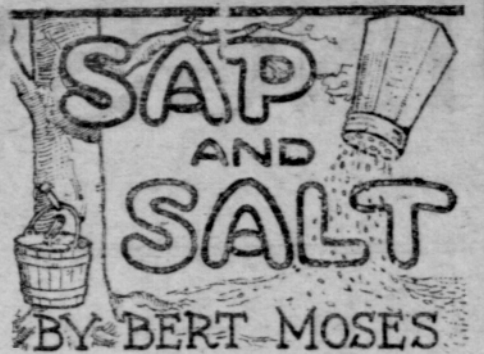
Standing of the Clubs: PACIFIC COAST LEAGUE: Club— W. L. Per. San Francisco 74 46 .617 Vernon 68 50 .576 Los Angeles 66 55 .546 Salt Lake 59 59 .500 Oakland 57 63 .475 Seattle 54 65 .454 Portland 50 69 .420 Sacramento 49 70 .412

Standing of the Clubs: AMERICAN LEAGUE: Club— W. L. Per. St. Louis 57 41 .582 New York 57 44 .564 Chicago 53 46 .535 Detroit 53 47 .530 Cleveland 52 50 .510 Washington 45 52 .464 Philadelphia 39 56 .411 Boston 39 59 .398

Standing of the Clubs: NATIONAL LEAGUE: Club— W. L. Per. New York 58 38 .604 St. Louis 60 41 .594 Chicago 53 45 .541 Cincinnati 53 47 .505 Pittsburgh 48 47 .505 Brooklyn 47 49 .490 Philadelphia 35 57 .380 Boston 32 62 .341

Standing of the Clubs: GOLD HILL AND MEDFORD: Tonight at Gold Hill, Joe Gorman of Portland, one-time light and featherweight champion of the Pacific coast, will meet that fast little corner, Johnny Carlson of Gold Hill, in an eight-round go.

Standing of the Clubs: GOOD BOXING BOUTS AT GOLD HILL AND MEDFORD: Tonight at Gold Hill, Joe Gorman of Portland, one-time light and featherweight champion of the Pacific coast, will meet that fast little corner, Johnny Carlson of Gold Hill, in an eight-round go.



A rich man's fame generally ends when he does. All that you get out of one war is a reason for another one. The old idea that it is vulgar to work is more popular now than ever. Religion, like nations, has to undergo periodical reforms, or it will perish. Start looking for something, and everybody who comes along will help you try to find it. There seem to be a lot of people whose pleasure comes from doing things they know are wrong.

HEZ HECK SAYS: "Milliners winders ketch the wimmin, while ball scores ketch the men."

is so clever that the Tidings wishes it could spare the space for its reproduction. The authoress "says it with flowers" in response to a package of free seeds which the senator had franked to her as a peace offering. She "says it with flowers" all right, but the odor is pungent of sulphur and vitriol.

The city council last night set its seal of approval on the project for carrying to completion the Mount Ashland scenic drive project. A committee has been appointed to confer with the county road authorities to see if they will renew their proposition with respect to the canyon road, made some time ago, when the offer was made to go ahead with the work if the city of Ashland would go fifty-fifty. At that time the council did not think it advisable to incur the expense, but believe now that present conditions warrant the project being carried to completion. This is as it should be. The completion of that highway will be one of the greatest assets of Ashland, and if the project is rounded out to the fullness of its possibilities, will furnish an attraction for tourists second only to Crater Lake.

REGULATION OF INDUSTRY: Driven to public action by the coal strike about two years ago, the state of Kansas created a court of industrial relations. This court was empowered to arbitrate all labor disputes in essential industries—food clothing, fuel and transportation.

Standing of the Clubs: PACIFIC COAST LEAGUE: Club— W. L. Per. San Francisco 74 46 .617 Vernon 68 50 .576 Los Angeles 66 55 .546 Salt Lake 59 59 .500 Oakland 57 63 .475 Seattle 54 65 .454 Portland 50 69 .420 Sacramento 49 70 .412

Standing of the Clubs: AMERICAN LEAGUE: Club— W. L. Per. St. Louis 57 41 .582 New York 57 44 .564 Chicago 53 46 .535 Detroit 53 47 .530 Cleveland 52 50 .510 Washington 45 52 .464 Philadelphia 39 56 .411 Boston 39 59 .398

Standing of the Clubs: NATIONAL LEAGUE: Club— W. L. Per. New York 58 38 .604 St. Louis 60 41 .594 Chicago 53 45 .541 Cincinnati 53 47 .505 Pittsburgh 48 47 .505 Brooklyn 47 49 .490 Philadelphia 35 57 .380 Boston 32 62 .341

Standing of the Clubs: GOLD HILL AND MEDFORD: Tonight at Gold Hill, Joe Gorman of Portland, one-time light and featherweight champion of the Pacific coast, will meet that fast little corner, Johnny Carlson of Gold Hill, in an eight-round go.

Standing of the Clubs: GOOD BOXING BOUTS AT GOLD HILL AND MEDFORD: Tonight at Gold Hill, Joe Gorman of Portland, one-time light and featherweight champion of the Pacific coast, will meet that fast little corner, Johnny Carlson of Gold Hill, in an eight-round go.

Standing of the Clubs: PACIFIC COAST LEAGUE: Club— W. L. Per. San Francisco 74 46 .617 Vernon 68 50 .576 Los Angeles 66 55 .546 Salt Lake 59 59 .500 Oakland 57 63 .475 Seattle 54 65 .454 Portland 50 69 .420 Sacramento 49 70 .412

Standing of the Clubs: AMERICAN LEAGUE: Club— W. L. Per. St. Louis 57 41 .582 New York 57 44 .564 Chicago 53 46 .535 Detroit 53 47 .530 Cleveland 52 50 .510 Washington 45 52 .464 Philadelphia 39 56 .411 Boston 39 59 .398

Standing of the Clubs: NATIONAL LEAGUE: Club— W. L. Per. New York 58 38 .604 St. Louis 60 41 .594 Chicago 53 45 .541 Cincinnati 53 47 .505 Pittsburgh 48 47 .505 Brooklyn 47 49 .490 Philadelphia 35 57 .380 Boston 32 62 .341

Standing of the Clubs: GOLD HILL AND MEDFORD: Tonight at Gold Hill, Joe Gorman of Portland, one-time light and featherweight champion of the Pacific coast, will meet that fast little corner, Johnny Carlson of Gold Hill, in an eight-round go.

Standing of the Clubs: GOOD BOXING BOUTS AT GOLD HILL AND MEDFORD: Tonight at Gold Hill, Joe Gorman of Portland, one-time light and featherweight champion of the Pacific coast, will meet that fast little corner, Johnny Carlson of Gold Hill, in an eight-round go.

being. It would be only one step further to apply these principles to male labor in essential industries. There can be no question that the idea that the public must protect itself against the suffering and immense loss caused by strikes in essential industries has gained much strength in recent years. At the same time the idea that the public must interfere when employer and employee fail to agree in any dispute has gained equal strength. The same may be said concerning public sentiment which demands a fair wage for all labor. One result of the coal strike and of the railroad strike, we believe, will be just laws by other states to protect labor, and impartial, just administration of these laws.

Co-Operative Fruit Sales Nearly Two Million Dollars

A report recently completed by the Oregon Growers' Co-operative association in connection with the annual audit shows that during the past year business through the sale of fruit amounting to nearly \$2,000,000 was transacted. Segregated into accounts for the different fruits the report is as follows: Apples \$522,411.11 Pears 258,942.19 Dried Prunes 843,577.99 Cherries 83,461.32 Berries 148,141.32 Nuts 26,495.00 Vegetables 33,882.99 Plums and Green Prunes 23,882.16 Dried Apples 322.50 Grapes 1,712.39 Apricots 19,212.33 Peaches 19,516.00

It is believed that this year's business will total \$3,000,000 or more. The association is now actively operating in practically all of the principal fruit districts in Oregon and controls over 3200 acres of fruit, which acreage is steadily growing.

AT THE COUNTY SEAT Real Estate Transfers

Wallace D. Carey et ux, to John Patterson et ux, w. d. to lots 30 and 31, block "A," Railroad addition to Ashland—\$10. Charles A. Leager et ux, to F. J. Huber, w. d. to part d. l. e. 57, iwp. 38 S. E. 1 W.—\$10. Isaac Householder et ux, to James Bowling et al., w. d. to lots 1, 2, 3, 10, 11, 12, block 3, lot 14, block 4, Narragan's addition to Medford—\$10. Maude Cantrall to John B. Harrell et ux, w. d. to land in Ashland Homestead addition to Ashland—\$10.

Circuit Court

Rogue River Valley Canal company vs. Hugh Storey; foreclosure of contract. Newbury & Cantrall vs. H. H. Taylor; summons. Pearl V. Collins vs. E. A. Collins; motion. W. B. Richard vs. I. A. Pruett; claim of lien.

Probate Court

Estate of G. H. Wamsley. Petition, order, citation. Estate of Emma Z. Tackstrom. Order, oath, bond.

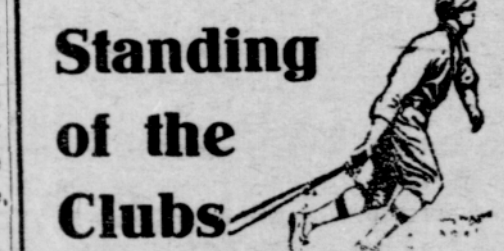
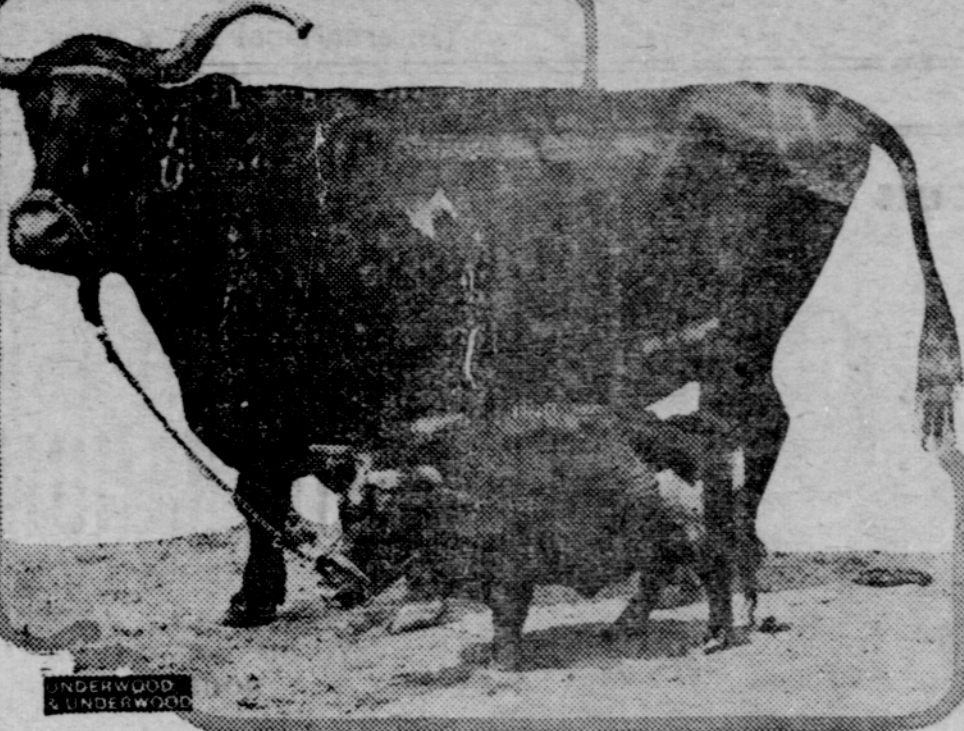


Table of sports schedules and results for various leagues including Pacific Coast League, American League, National League, and Gold Hill and Medford.

Smallest Cow and Largest Steer



Here are the smallest cow on earth, eight years old, born near Altoona, Pa., standing 28 inches in height; and the largest steer in the world, born in Saber county, Tex., 19 hands high, or 76 inches, 13 years old, and weighing 1,200 pounds.

WORTH KNOWING

Sicily and Italy are large exporters of sulphur. Ontario, Canada, is the greatest nickel producer. Something like 45,000 stitches are required to make the ordinary suit of clothes. A survey of the housing situation was recently made in Minneapolis by the mail carriers. More than 5,000 miles of nets are set nightly during the herring season in the English channel. Athletic club, has a go scheduled for tomorrow night that gives promise of making good for the recent fiasco between Gordon McKay and "Wildcat" Welly. Joe Blackburn and "Batling" Frick are down for the main event. These lads are well known locally, and the fans are certain of a run for their money, when they mix.

"Red Ruperi" Weds Ex-Convict Bride in Marshfield

MARSHFIELD, Or., Aug. 2.—It has just been learned that Clyde J. ("Red") Rupert, ex-Portland policeman and bank robber, and Hazel Erwin, convicted accomplice of Willard R. Tanner in the killing of Roy W. Wallace in Portland in 1912, were married here last week. Both are working in a local restaurant. Mrs. Rupert is now on parole from the penitentiary and must report to prison officials once each month. Rupert was released from McNeil's Island about four months ago on a presidential pardon. Both Rupert and his bride were serving time in Salem two years ago when they met. Rupert won her away from Tanner, her ex-lover, while all three were behind prison bars. He first saw her at one of the prison picture shows and by a code of signals used by convicts they were able to send messages to each other. Rupert was released from Salem on July 5, 1921, at the completion of a term marked by a sensational escape, chase and capture, but was taken directly to McNeil's Island to serve a four year federal sentence for the theft of \$18,000 in Liberty bonds from the Northwestern National bank of Portland, while employed as a special guard. He succeeded in getting his pardon about four months ago. Rupert went to Marshfield when released from prison and was joined there recently by Miss Erwin. Both have declared their intention to "go straight" and forget the past. Rupert's bride was convicted in 1912 as an accomplice of Tanner in the slaying of Wallace in a Portland

"111" cigarettes advertisement featuring an illustration of three people and the slogan "They are GOOD!"

rooming house. Both she and Tanner were convicted of manslaughter and sentenced to from one to 15 years in prison. They served eight years.

BIBLE INSTRUCTOR LEAVES FOR HOME

Miss Silva left for her home in California Saturday, after spending some days in Ashland. Miss Silva formerly taught music here. She is now traveling in the interest of thorough Bible study, as she has given it under the U. of C. extension course. She endeavors to get people to read the Bible and look up church history, which would do away with many lines of division in religious belief, contending that the reading of the whole Bible by all the people would bring about unity of belief. Lumber shipments from port of Astoria to both foreign and domestic ports reaching large figures.



PERFORMANCE PROVES SAVAGE TIRES Are BUILT TO EXCEL IN SEATTLE, WASHINGTON

The city of Seattle and the territory tributary thereto offers a variety of road conditions affecting tire mileage. You have splendid highways, some fairly good and others not so good—the steepness of your hills, especially in the city, must be taken into consideration, too, when considering local commercial service conditions. In our general office files are certified copies of remarkably consistent performance Savage tires are giving in different types of service in this territory. In City Commercial Service A local concern, operating a fleet of cars and using Savage tires exclusively for the past three years, receives 18,000 to 21,000 miles from Savage tires. The unusually heavy duty performed brands this service as really remarkable and far greater than was previously received from other makes of tires. A general average of 12,000 miles from our tires, received by another local concern, is an increase of 50% over the highest average mileage previously secured. On Territorial Runs More than 19,000 miles of service as an average from our 30 x 3 3/4 "D" Type tires is the experience of a company sending a salesman over country roads in this territory. The greater part of this mileage is made off the pavement. We point with no particular pride to 22,000 miles rendered by our fabric tire in competition with other makes—including cord and fabric tires in territorial service—even though that mileage represents the greatest secured from any make. This we class as an individual record and it does not necessarily prove consistency in general average performance such as we are desirous of showing. The Savage Cord We have incorporated into the Savage Cord seventeen outstanding constructional features that make it an exceedingly superior article. Placed on the market in the Northwest last year, original tires shipped into your territory are for the most part still in service. We have numerous reports of Savage Cords that are still in operation having delivered to date 12,000 to 14,000 miles and even up to 27,000 miles. Almost any tire will give satisfactory service under ideal conditions. Some makes will even render satisfactory service under certain adverse conditions. Certain makes of tires will perform best on long drives over pavements, other makes will show to better advantage on dirt highways—and so it goes. Our object has been to build Savage Tires to perform equally well under every condition—on the short haul of the heavily laden commercial car, on the heated roads of the sandy desert, over mud and stones of the land of forests or the broad dirt highways of the plains. That we have accomplished our purpose is evident from the results users of Savage Tires are getting—everywhere.

THE SPRECKELS "SAVAGE" TIRE CO. SAN DIEGO, CALIFORNIA. OUR BEST ASSET IS THE SATISFIED CUSTOMER. "Heap Big Mileage" The Sunders Company "Heap Big Mileage"