

LOCAL AND PERSONAL

Postpone Meeting— Boy Scouts of troop two will meet Monday evening, July 17, at the usual meeting place. The absence of the scoutmaster makes a meeting to-night impossible.

Phone 274-J for Yeo. 216tf

Visiting with Relatives— Miss Georgie Marten, of Mt. Pleasant, Iowa, arrived in Ashland Sunday for a visit with her aunt, Mrs. Emma Coffee. Miss Marten came west by the northern route stopping for a short time at Glacier Park. She will return home via San Francisco and Los Angeles.

Another popular dancing party Saturday night at the big Hot Spring pavilion. If you like to dance with a big crowd and good music, come! Tickets \$1, war tax 10c. 259-3

Leaves for Corvallis— Rev. C. F. Koehler left for synod at Corvallis this morning. Rev. C. C. Hulet, who was near Roseburg yesterday, expects to go on to Corvallis today. Both will go to Portland next week for a religious education conference of the Presbyterian church.

Let Jerry O'Neal figure your next job of plumbing. First class material and workmanship. Phone 133. 207 E. Main street. 238tf

Returns Home— Miss Evelyn Hulet, who has been helping her father conduct a daily vacation Bible school in the Applegate valley, returned home last evening. Miss Hulet is suffering from a severe case of poison oak.

Trade your old tires in and buy MA ON CORDS at LEEDOM'S TIRE HOSPITAL. 252tf

Passes Through Ashland— Rev. E. H. Edgar came over from Merrill Friday, via the Klamath Falls stage, and visited at the Presbyterian manse over night, going on to Central Point Saturday and from there to Corvallis in time for the meeting of synod.

Fruit canning time is at hand. For fruit jars, lids, rubbers, jelly molds and sugar, Detrick's prices can't be beaten.

Goes to Eugene— Rev. C. A. Edwards went to Eugene Saturday to hold a pre-conference rally of the Epworth League. The conference opens in Ashland shortly.

Dancing Saturday night, Hot Springs. 259-3

Come Here to Locate — Mr. and Mrs. George E. Pope and baby are new arrivals from Colorado, having come through by auto. Mrs. Pope is a daughter of W. W. Robinson of Beach street, and they expect to locate here.

Dancing Saturday night, Hot Springs. 259-3

Weinle Roast Thursday— The Presbyterian Christian Endeavor society will hold their regular business meeting near their regular court in the park Thursday at 5 o'clock. They will then repair to the upper camp for a weinle roast. Members are requested to be on hand promptly at 5.

We have a good proposition for responsible party with Ford car. See L. U. Gopen, Columbia hotel after 10 a. m. 259-2*

Visiting with Friends— Harry Casey, of Santa Monica, Calif., is in the city visiting with friends for a few days. Mr. Casey is a brother-in-law of Charles Hargadine, who was reported to have had a paralytic stroke a short time ago, but Mr. Casey says the report was exaggerated, as Mr. Hargadine was taken quite ill, but is not paralyzed in any manner.

Bicycle for rent. Fixit Shop, 35 First street. 260tf

Art Club to Meet— The Ladies' Art club will meet this evening in Pioneer hall for their regular meeting. Mrs. George Kinz and Mrs. Newton Harrison are hostesses for the evening. Last meeting of the season.

Insurance—274-J—Yeo. 216tf

CONVICTS AT WORK ON KLAMATH RIVER ROAD YREKA, Calif., July 10.—Sixty three convict road workers arrived in Hornbrook Thursday and were taken to the Beaver Camp road camp to begin the construction of a 65-mile road down the Klamath river from the mouth of the Shasta river to Happy Camp.

BEHIND THE DEVASTATING FAN

Lovely Lila Lee Displays New Mode

EVERY article of clothing and every accessory that can be made of lace is a thing to be desired by this summer's girl. Lace dresses, lace shawls, lace scarfs, lace fans—the lace fan, gracefully large, gossamer, black,



ABOVE—DYED ALLOVER LACE DRESS—BELOW—COLLAR AND FAN OF REAL LACE

spangled—not for cooling purposes, but to fan a flame into warmer ardor on a moonlight night. This dangerous sort of fan is shown above in the hand of Lila Lee, the Paramount star, who is capable of handling it adroitly and devastatingly, you may be sure. She demonstrates this charming ability in her new

picture, "The Dictator," in which she appears as Senorita Juanita Rivas, in support of Wallace Reid. The fan goes with her lace shawl and Spanish comb. So much for lace accessories, and to turn to lace dresses. Last year the close of the summer season found all-over lace very popular. And now at the beginning

of this summer, we find it taken up again with tenfold enthusiasm. It frequently happens, that a material or trimming appearing at the end of a season one year, reappears in an avalanche the following year at the beginning of the corresponding season. Thus, just as at the close of last summer we found henna and brown all-over lace extremely popular, we now find all-over lace all over the place. Not only in henna and brown, but in all the seven colors of the rainbow, and in seven times seven other different shades. In the sketch above is shown a popular model in dyed lace. It is in violet blue over a violet slip. A wide sash drawn to the side is bunched into a huge rosette of tulle and lace, the lace trailing wispily into a train. In the lower sketch, a real lace collar is featured on a simple gown of old-fashioned cut, and the lace collar matches a dainty fan. A set like this, of fan and collar, is rich and unique in appearance, and milady needs no other decoration. A bit of real old lace has the same quaint charm of an old cameo, or coral ornament of eighteen-sixty-five. Lila Lee's scarf and fan match too, and are of real Spanish lace.

DR. ALLEN FILLS PULPIT AT PRESBYTERIAN CHURCH Dr. Allen, of Chicago, who, with his wife, is a guest of Mrs. Allen's brother, H. T. Elmore, on North Main street, preached at the Presbyterian church yesterday morning. In the absence of Rev. Edwards, the Methodist congregation came over in a body and the united audience was stirred by the message of the morning. The text was John 10:9. "I am the door; if any man enter he shall be saved, and shall go in and find pasture." Miss Florence Allen sang "My Creed," with a beautiful effect.

BUSINESS AND PROFESSIONAL

One cent the word each time. FOR EXCHANGE FOR TRADE—160 acre unincumbered ranch on Pacific highway and county road, near Hill; small house and outbuildings; good stock or chicken ranch with plenty of wood and tillable land. Will trade for unincumbered Ashland acreage; prefer no house, but would consider acreage with small house. Eleanor Greer, 139 Granite St. 231tf

WANTED BY WEED LUMBER CO. WEED, CALIF.—Timber fallers to contract combined fallings, bucking and limbing. Good earnings can be made and living conditions are of the best. Cottages are available for families. Interested parties communicate direct with Weed Lumber Company, Weed, California. 251-12

UNDER STRIKE CONDITIONS BEST EXPLAINED BY CHAIRMAN BEN W. HOOPER OF THE UNITED STATES RAILROAD LABOR BOARD IN HIS STATEMENT OF JULY 1ST, READING AS FOLLOWS

"In this case the conflict is not between the employer and the oppressed employees. The people of this country, through an act of congress, signed by President Wilson, established a tribunal to decide such disputes over wages and working conditions, which are submitted to it in a proper manner. It is the decision of this tribunal against which the shop crafts are striking."

"Regardless of any question of the right of the men to strike, the men who take the strikers' places are merely accepting the wages and working conditions prescribed by a government tribunal and are performing a public service. They are not accepting the wages and working conditions which an employer is trying to impose. For this reason public sentiment and full government power will protect the men who remain in their positions and new men who may come in."

Adequate provisions have been made for the full protection of a new employee, the same as old employees who have remained loyally at work. Applicants should apply to the office of the superintendent at Portland (Union station), or to the assistant superintendent at Roseburg.

J. H. DYER, General Manager Southern Pacific Company. R. E. KELLY, Representative Executive Department Southern Pacific Company.

Bathing Caps JUST RIGHT 25c EACH Picnic and Outing Supplies Camping Comforts Effective . . . Diplomatic ASHLAND REALTY CO. Opposite City Hall Business Chances Insurance Real Estate C. B. LAMKIN BARGAINS IN REAL ESTATE City and Ranch Properties Houses to Rent CITIZEN'S BANK BUILDING We Buy and Sell Real Estate FIRE INSURANCE INVESTMENTS STAPLES REALTY AGENCY Hotel Ashland Building Ashland, Oregon Phone 26

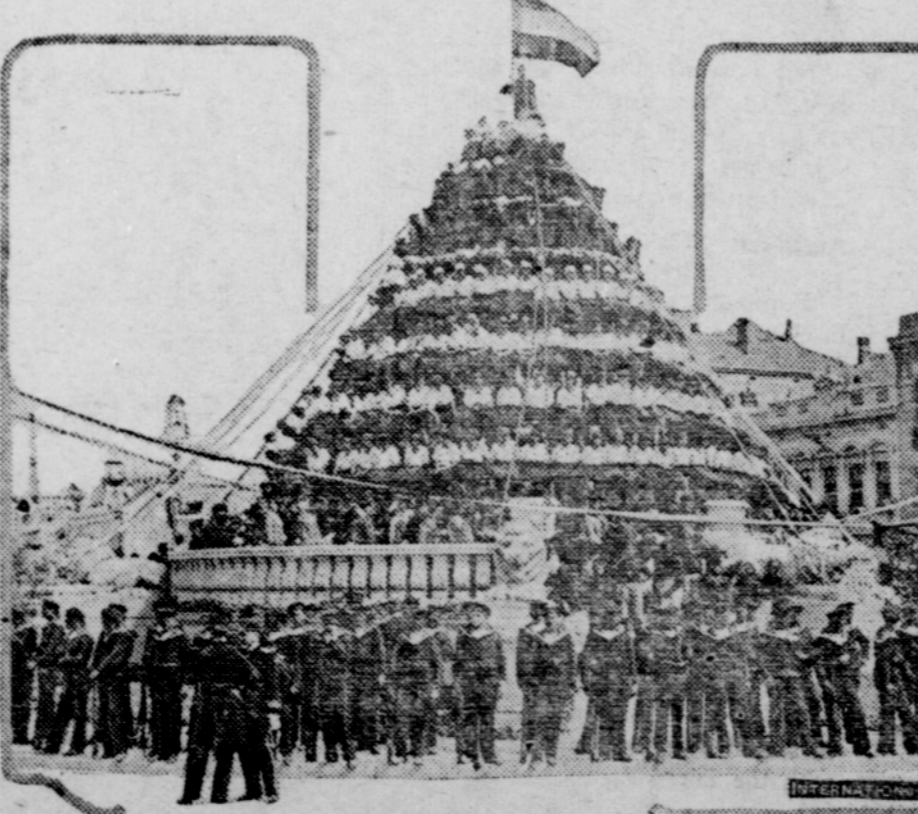
HAMBONE'S MEDITATIONS

DE OLE 'OMAN BIN WEAHIN' MOU'NIN' TWELL MISS LUCY GIB 'ER DAT LOUD WAIS' TOTHER DAY EN LAW, MAN! SHE AIN' WEAHIN' MOU'NIN' NO MO'—'CEPN JES' FUM DE WAIS' DOWN!!



An electric furnace automatic in its operation has been invented in Michigan for heat treating metals to be used in machinery, a task heretofore done under close supervision of expert workers.

Waiting for the Royal Bridal Couple



Photographs of the scenes in Belgrade at the time of the wedding of King Alexander of Yugo-Slavia and Princess Marie of Rumania are arriving in this country. This one shows a cone-shaped stand filled with girl guides and boy scouts awaiting the procession to the church.

INTERURBAN AUTOCAR CO. (Effective January 1, 1922) Daily (Except Sunday) LV. MEDFORD LV. ASHLAND

WHAT REDUCES MILK AND FLESH MORE THAN FLIES? Double Strength SHOOLFY just in from Philadelphia. It's the best Fly Repellant on the market today for the spraying of your cows.

Fencing, Mowers, Rakes and Binders and their repairs. All kinds of Sewing Machines. Peil's Corner

At Once SEE US NOW ABOUT YOUR FIRE INSURANCE Procrastination in taking out fire insurance has robbed many a man of his entire property. Don't be caught unprepared by the fire fiend. Your home, your business, your crops, your automobile have a very real money value.

ASHLAND-ROSEBURG STAGE Daily (Except Sunday) LV. ASHLAND LV. ROSEBURG

ASHLAND-ROSEBURG STAGE Daily (Except Sunday) LV. MEDFORD LV. G'TS PASS

BUY YOUR FRIERS at Reed's Poultry Farm, 20 cents per pound. 298 Avery street, one block north of Granite City hospital. 260-3*

W. A. SHELL BARBER Safety blades resharpened like new. Single bit, 30c doz. Double bit, 60c doz

W. A. SHELL BARBER Safety blades resharpened like new. Single bit, 30c doz. Double bit, 60c doz

W. A. SHELL BARBER Safety blades resharpened like new. Single bit, 30c doz. Double bit, 60c doz

W. A. SHELL BARBER Safety blades resharpened like new. Single bit, 30c doz. Double bit, 60c doz

W. A. SHELL BARBER Safety blades resharpened like new. Single bit, 30c doz. Double bit, 60c doz

W. A. SHELL BARBER Safety blades resharpened like new. Single bit, 30c doz. Double bit, 60c doz

W. A. SHELL BARBER Safety blades resharpened like new. Single bit, 30c doz. Double bit, 60c doz

W. A. SHELL BARBER Safety blades resharpened like new. Single bit, 30c doz. Double bit, 60c doz

W. A. SHELL BARBER Safety blades resharpened like new. Single bit, 30c doz. Double bit, 60c doz