

BETTER BUSINESS CONDITIONS

Improvement in All Lines Reported in Twelfth Federal Reserve District

SAN FRANCISCO, June 28.—Conditions in the twelfth federal reserve district show that in May for the first time this year, the dollar value of sales of 32 representative department stores and mail order houses was greater than in the corresponding month a year ago, sales in May 1922 being 15.5 per cent greater in value than in May 1921. In the wholesale trade the various lines (except automobile tires and shoes) report increases of 1 to 51 per cent in the dollar value of their sales during May 1922, compared with May 1921, by far the most favorable showing made this year. These increases evidence the greater purchasing power of the community growing out of increased activity in industry, with an improved employment situation, and advancing prices for farm products.

Since January of this year there has been a steady increase in the production of lumber in this district, and in May, reporting lumber mills operated at 100 per cent of normal capacity for the first time in two years. Orders received exceeded the output, and unfilled orders on hand at the close of the month were nearly twice as large as one year ago.

The crops of the district made favorable progress during May and normal yields are expected in most sections. Prices already made on some varieties of deciduous fruits are uniformly higher than those paid to the grower a year ago. The shearing of wool has been completed except in some parts of the northern states, and about 90 per cent of the district clip (72,250,000 pounds) has already been sold. New wool clip has recently been purchased for 35 to 45 cents per pound, compared with prices of 15 to 17 cents paid at this time last year.

The banking situation in the district changed little during the month. Rediscounts with the federal reserve bank, both by city and country member banks were reduced—the total on June 14th being \$1,255,000, or 2.9 per cent, less than on May 10th. Loans and discounts of reporting member banks remained practically stationary, and on June 7th were \$853,560,000, compared with \$853,231,000 on May 3d. Interest rates on commercial paper (bought through brokers) and on customers' paper in some of the leading financial centers of the district declined one-fourth to one-half of one per cent during the month.

WILL INITIATE CLASS THURSDAY AT MEDFORD

Medford camp, Modern Woodmen of America, will initiate a class of 40 candidates at Althea hall in that city Thursday evening of this week, at 8 o'clock. The class will be composed of candidates from all parts of the valley, and a large delegation of Ashland members are expected to attend. All members having cars will call at the Moose hall at 7 p. m., and pick up any member who desires to go and has no conveyance.

COFFIN MADE FOR WIFE; DIVORCE DECREE SOUGHT

DETROIT, Mich., June 28.—Because John F. Langeman, an inventor, is alleged to have threatened to kill his wife and daughter, and actually constructed a coffin; because he

has not shaved for 37 years, and because he is said to be an agnostic, Mrs. Rose W. Langeman, his wife, to d Judge Marschner that despite the fact that she was 60 and her husband was 62 years old, she thinks a divorce would make them both happier.

FREIGHT RATE CUT JULY 1 IS ANNOUNCED BY ESPEY

New freight tariffs embodying the 10 per cent reductions in freight rates ordered by the interstate commerce commission are being distributed by the Southern-Pacific railroad, according to freight officials of the company. The reduction will become effective July 1.

The Southern Pacific officials believe that considerable traffic will result and is making arrangements for cars and service for the increased business.

BILL PASSED TO PREVENT "THIMBLERIGGING" MARKETS

WASHINGTON, June 28.—The new Capper-Tincher "anti-grain gambling" bill designed to prevent manipulation of grain prices by regulating trading in futures, was passed by the house yesterday, 208-76. The first Capper-Tincher act was declared unconstitutional by the United States supreme court, but the new measure is declared by its sponsors to meet the objections the court raised to the former bill.

VICTIM OF SHOOTING HAS CHANCE TO RECOVER

RED BLUFF, Calif., June 28.—Fred Hatfield, who was twice shot in the chest Friday night by his nephew, John Neal Wilkinson, of this city, has a fighting chance to recover.

Wilkinson, who surrendered to the officers here Friday night, after the shooting on a ranch five miles west of Red Bluff, is still in jail. No charge has been filed against him, pending the outcome of the wounds.

Fur Industry.

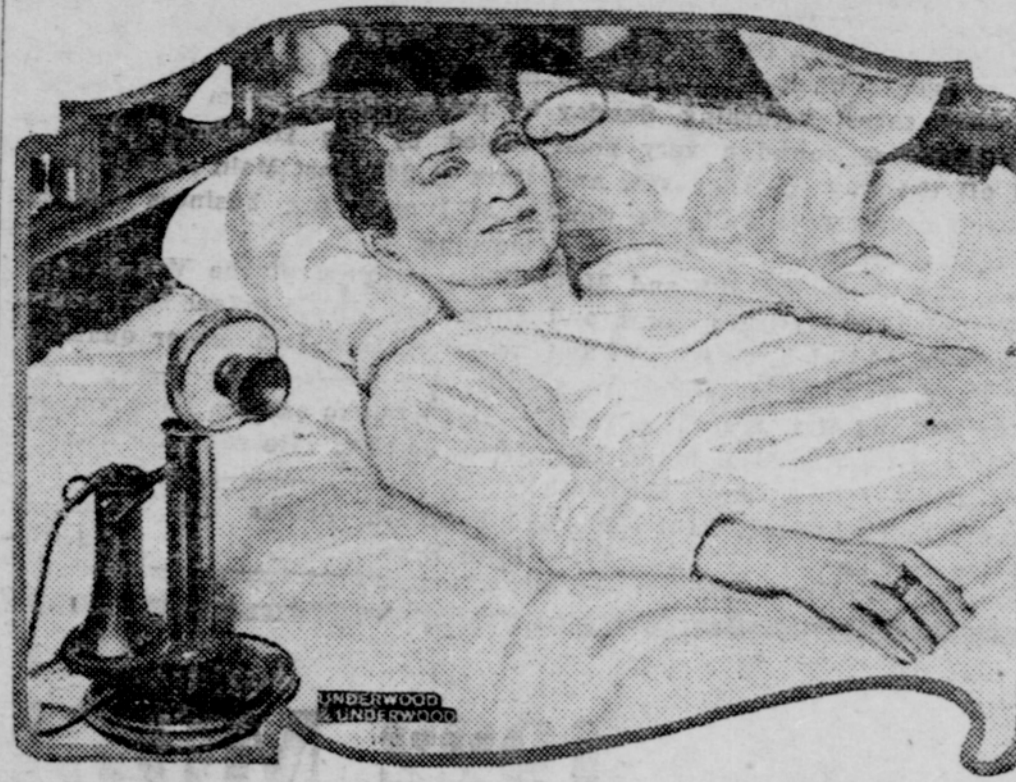
Up to within a century of the present time, raw furs were one of the most important products of this country, commercially speaking. Immense quantities of them were exported to Europe, where they were dressed, dyed and manufactured into garments.

This natural resource has been largely destroyed by the killing off of our fur-bearing animals. At the present time we are largely dependent upon foreign countries for supplies of skins.

Within recent years a great fur-dyeing and manufacturing industry has been built up in the United States, employing 18,000 operatives. We now import annually raw skins valued at \$69,000,000, and of dressed skins only \$4,000,000 worth.

Let Jerry O'Neal figure your next job of plumbing. First class material and workmanship. Phone 138. 207 E. Main street. 238ft

In Bed 29 Years; Runs Big Business



Mrs. Emma S. Brunnell of Hammond, Ind., has been flat on her back, with death always hovering near, for twenty-nine years. Her spine is broken, and other vital organs of the body are out of place as the result of an accident. Yet Mrs. Brunnell from her bed has built up a large real estate business and has also started and is operating a taxicab business. She is fifty-six years old.

CALL AT Ashland Realty Co.

—for—
FIRE INSURANCE POLICIES
—and—
BARGAINS in REAL ESTATE
Opposite City Hall, Ashland, Ore.



Vacationing?

Like many others you are planning a trip into the great outdoors, and trying to decide on that vacation spot. Let us assist by providing you with a copy of our 1922 "Oregon Outdoors" Folder. It is beautifully illustrated and brimming full of details, about resorts in Western Oregon.

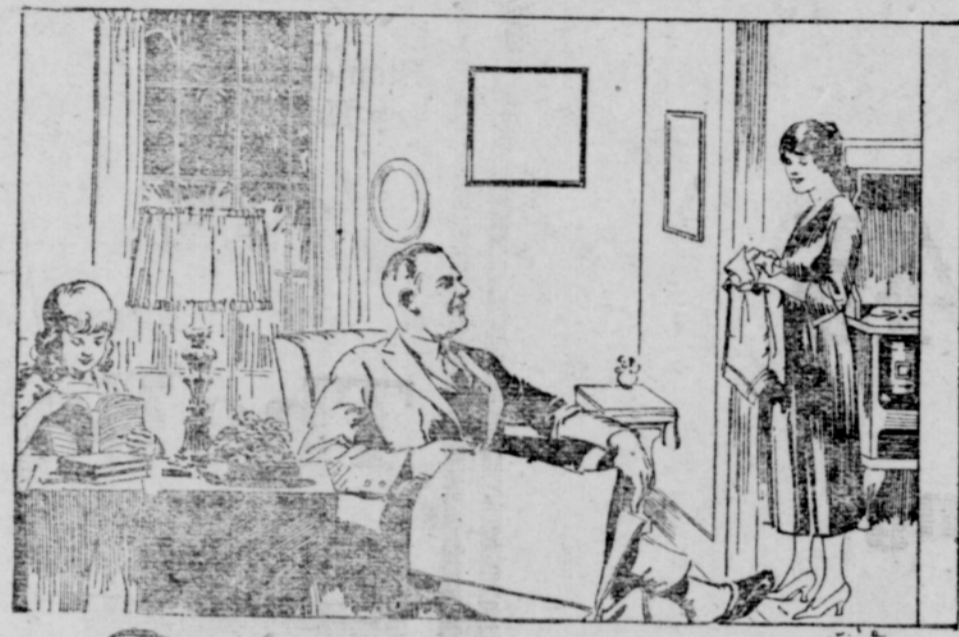


Excursion Tickets Cost Less--This Year

Tillamook County Beaches \$18.20 and \$21.45
Newport-by-the-Sea \$14.40 and \$17.15
Crater Lake National Park
Oregon's Forest, Lake, River and Mountain Resorts
Oregon Caves National Monument
Shasta Mountain Resorts Yosemite National Park
For fares, train schedules, beautiful folders, or other particulars, ask agents

Southern Pacific Lines

JOHN M. SCOTT, General Passenger Agent.



Through for the day

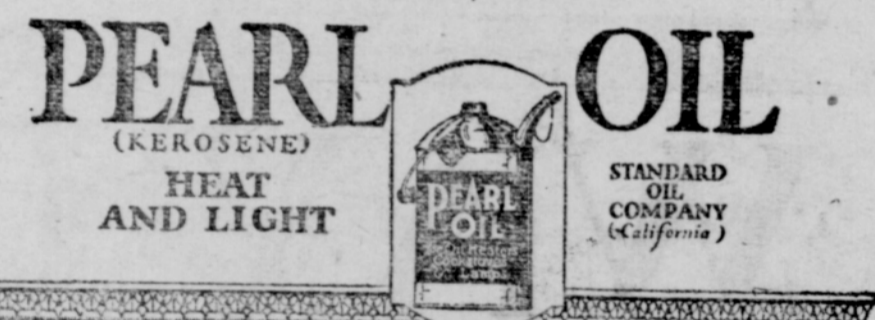
Your day's work is shortened and made easier when you have a good oil cookstove. Burn Pearl Oil for fuel and you no longer have coal and wood to carry or ashes to shovel out.

You work with a clean controlled heat that is concentrated directly under the utensil where it is needed—and your kitchen is kept cool and free from dirt.

Pearl Oil is the clean-burning, uniform, economical kerosene—refined and re-refined by a special process.

Dealers everywhere. Order by name—Pearl Oil.

STANDARD OIL COMPANY (California)



IN PORTLAND, OREGON

Oregonian Motorists, generally speaking, have just two outstanding conditions which in any material way effect their tire mileage and service.

- (1) **On the Pavement**
In wet weather it is advisable and highly desirable to have tires with an effective non-skid tread design. Yet, in other seasons of the year, these same tires should serve as "fast" tires—in other words, should not waste the power of the engine and retard the speed of the car by excessive suction or gripping to the road.
- (2) **Off the Pavement**
It is all-important to provide tire equipment that will stand the gaff of gravel, sand, alkali and volcanic rock roads.

Typical of the remarkably consistent performance Savage tires are giving in this territory, the following is taken from certified performance records in our general office files.

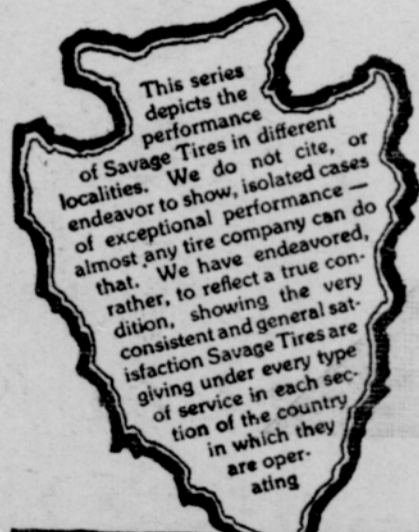
On the Columbia Highway
The first automobile over the snow and ice to reach Bridal Veil, just after the big snow and sleet storm of last November was a seven-passenger car equipped with Savage tires. The trip was made to test the

non-skid properties of the Savage Cord and no chains were used.

Coming back five other cars were met—each equipped with chains. The return was all up grade and had to be made in second gear. Under these extreme conditions the traction of the Savage Cord tread design proved so perfect that the car did not skid excessively, nor was it possible to detect that the wheels spun on any occasion.

On Mountain Stage Runs
A stage line in Southern Oregon, over mountain roads, is averaging 8000 miles from Savage Cords where the best previous average from other makes of tires has been 5000 miles. This mileage is not great but the type of service these tires undergo makes this performance comparatively remarkable, representing, as it does, an increase of 60% over the highest previous tire mileage secured by this operator.

The Reason
The success of a tire in this or any other territory can not be attributed to any one method employed, or compound used, or to selection of raw materials, but, rather, to a combination of the whole. Tire men and motorists familiar with tire construction have found in the Savage Cord seven outstanding constructional features that help to make it the wonderful tire it is.



Almost any tire will give satisfactory service under ideal conditions. Some makes will even render satisfactory service under certain adverse conditions. Certain makes of tires will perform best on long drives over pavements, other makes will show to better advantage on dirt highways—and so it goes.

Our object has been to build Savage Tires to perform equally well under every condition—on the short haul of the heavily laden commercial car, on the heated roads of the sandy desert, over mud and stones of the land of forests or the broad dirt highways of the plains.

That we have accomplished our purpose is evident from the results users of Savage Tires are getting—everywhere.

THE SPRECKELS "SAVAGE" TIRE CO. SAN DIEGO, CALIFORNIA—OUR BEST ASSET IS THE SATISFIED CUSTOMER

THE BOOT SHOP

Final Closing Out Sale

All shoes re-marked at prices for quick sale

Extra of Five Ford Tickets on Each Pair of Ladies High Shoes



"Heap Big Mileage" **The Enders Company** "Heap Big Mileage"