

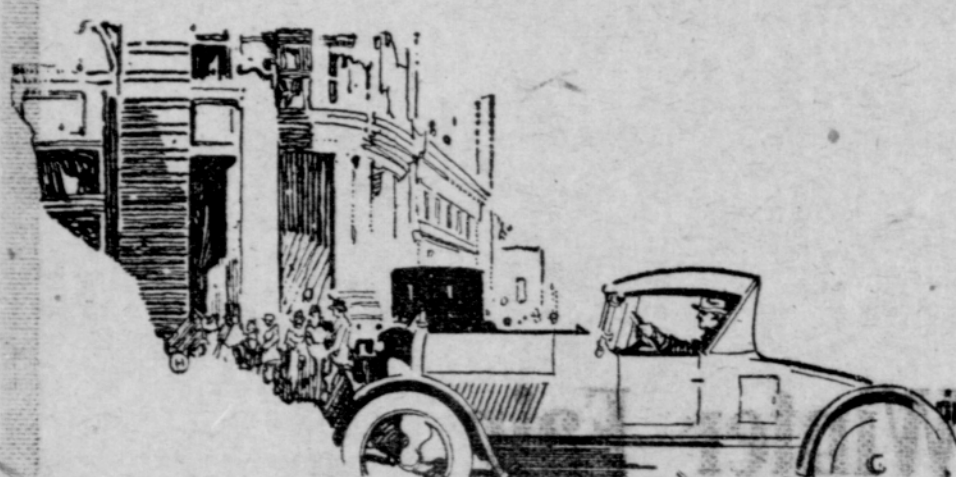
DIGNIFIED MILLINERY WITH DEFINITE LINES



IT IS hard to generalize about hats, since they are so endlessly varied. It appears that designers have aspirations that no two of their brain-children shall be alike; but they have no objection to certain family resemblances in them. In the group of four hats illustrated, we discover models that good taste and propriety dictate may be worn by matrons—older women, who have passed by the era of romantic millinery and reached that of brilliant and spirited head-wear. The hats pictured are both brilliant and spirited, yet they are all in black or quiet shades of color.

A little study of these models reveals that they have definite lines, which the mode sponsors, along with a much more numerous family of hats that are vague and soft in outline. These are becoming to nearly everyone, but not always the best choice for the matron, who finds more vivacity in styles, like the tricorne or Napoleon, or in the several styles in turbans. The Russian turban, at the top of the group, is brimming over with style, and is a special dispensation of this season for the benefit of matronly wearers. It is made of black velvet, and has a brilliant rhinestone ornament dangling from its pointed

Julia Bottomley



To the Business or Professional man-

Do you want a battery that will start and light your car with a powerful current for at least two years without frequent trips to a battery station for recharging or repairs? Buy a "Luthy."

Do you want the only battery with patented "Luthite" indestructible insulating separators, which do not rot like wood or rubber-compound separators and cause short circuits, and which never need renewing? Buy a "Luthy."

Do you want a battery that is self-cooling, that does not warp and buckle its plates and "burn out" from over-heating? Buy a "Luthy."

The "Luthy" is a time-tested, dependable battery, embodying patented features which assure you more and better battery service. Most other good batteries are very much alike, but the Luthy battery is an advance in construction and service.

Because of its merits, we are able to give with each Luthy battery a written guarantee from the makers—"Two years service or a new battery without cost." There is a "Luthy" battery for each type of car. We repair and give service on all makes of batteries. Come here for service.

Two years service or a new battery without cost



Who is your "Luthy" distributor?

A C WILLHITE, Buick Service Station, 83 North Main St, Ashland, Ore.
 EXCHANGE TIRE COMPANY, Medford, Ore.
 REED AUTO SUPPLY CO, Klamath Falls, Ore.

Portland Specialist Compliments County Health Ass'n Work

Following a very interesting and instructive lecture at the Presbyterian church in Medford Tuesday evening, given by Dr. E. A. Pearce, well known tuberculosis specialist of Portland, a very successful clinic was held at the Sacred Heart hospital under the auspices of the Jackson County Public Health association. It was possible to clear up the diagnosis of several cases which have been under observation for some little time. Dr. W. P. Holt, county health officer, and Miss Fall-dine, county health nurse, are to be congratulated on so successful an undertaking.

The lecture given by Dr. Pearce was in part as follows: The subject of pale children is one of tremendous importance, and in order that the proper and adequate safeguards may be thrown around our children, must be understood by all of the people.

Examination of thousands of children in many of the cities reveals a condition of malnutrition in over 30 per cent. These children were not from homes of poverty. The percentage of tuberculosis and hereditary syphilis was very small. Their food had been normal in amount, but unfortunately not well selected. They had no forenoon or afternoon lunches, or periods of rest. They had strenuous work in school and often studied at night in their

homes. They were allowed to eat large amounts of sugar and candy. They partake of coffee and tea and indulge in social activities, which keep them up late at night. These children were found to be weak, easily fatigued and nervous. Their resistance to disease had been gradually reduced by their environment and faulty habits of eating and exercise.

These conditions prompted a study of food products which has resulted in a classification of foods adequate for human consumption. Class one is composed of food of known chemical and caloric value—fats, proteins, carbohydrates, salts, water.

Proteins are necessary for growth and reproduction. The best protein is animal milk, meat, eggs. One of these should be in every daily diet.

Class two are of unknown mineral content and caloric value, viz:

Fat soluble A, found in butter, codliver oil, yellow suet and green leaves. These foods are a safeguard against rickets and eye disease.

Water soluble A, found in plants and supposed to prevent polyneuritis and beri-beri.

Water soluble B, found in all vegetables and most fruits. This is necessary to prevent scurvy.

Experiments on calves by feeding

(Continued on Page Six)

Consult Us

about the things you want to try in the line of investments. If we don't know about them already, we'll investigate their reliability, and protect your purse.

The Citizens Bank Ashland, Oregon

Oregon Gas & Electric Co.

Provost Bros.

Where all business will be transacted and gas bill will be paid. Mr. Provost has been appointed agent for the company.

MANN'S — The Best Goods For The Price — No Matter What The Price — MANN'S

Annual Clearance Sale

Women's Winter Coats and Suits

STARTS SATURDAY, NOV. 26th -- 8 A. M. SHARP

Not for many years have we offered such astounding ready to wear bargains. We invite the women of Ashland to attend this

GREATEST OF ALL SALES

Note a Few of the Many Values Offered

20 PER CENT OFF ON ALL CHILDREN'S COATS		20 PER CENT OFF ON ALL WINTER SUITS		25 PER CENT OFF ON ALL TRIMMED HATS	
\$ 6.00 WINTER COATS	4.80	\$25.00 WINTER SUITS	20.00	\$ 5.00 TRIMMED HATS	3.75
\$ 8.00 WINTER COATS	6.40	\$30.00 WINTER SUITS	24.00	\$ 6.00 TRIMMED HATS	4.50
\$10.00 WINTER COATS	8.00	\$35.00 WINTER SUITS	28.00	\$ 8.00 TRIMMED HATS	6.00
\$12.00 WINTER COATS	9.60	\$40.00 WINTER SUITS	32.00	\$10.00 TRIMMED HATS	7.50
\$15.00 WINTER COATS	12.00	\$45.00 WINTER SUITS	36.00	\$15.00 TRIMMED HATS	11.25
\$20.00 WINTER COATS	16.00	\$50.00 WINTER SUITS	40.00	\$20.00 TRIMMED HATS	15.00

Three Big Values in Women's Winter Coats

\$30.00 Coats for \$19.98 WOMEN'S ALL WOOL WINTER COATS, lined throughout. All new styles. Every coat cheap at \$30.00. Annual Clearance Sale Price \$19.98	\$40.00 Coats for \$22.50 25 BEAUTIFUL NEW WINTER COATS FOR WOMEN, lined throughout with silk. Some with Fur collars. Cheap at \$40.00. Annual Clearance Sale Price \$22.50	\$60.00 Coats for \$32.50 25 EXTRA FINE WINTER COATS FOR WOMEN, made of fine Bolivia and other cloths. Most of them have large fur collars. Up to \$60.00 values. Annual Clearance Sale Price \$32.50
---	---	---

Mann's Department Store
The Store for Everybody
MEDFORD, OREGON

5.00 WAIST SALE
Crepe de Chine and Georgette Crepe Waists on sale for \$5.00

Agents for Pictorial Review Patterns